

FINAL

Executive Summary

This Current Technology Model represents one of the key deliverables for the Focus Phase of the Dakota County Criminal Justice Information Integration Network (CJIN) Implementation Plan. This document, with the Current Data Model and Current Process Model, will ensure that KPMG Consulting and the Dakota County CJIN Steering Committee have a common understanding of the current criminal justice operating environment, its data repositories and technology components.

This document is specifically designed to:

- Document the current county criminal justice IT/systems architecture, including data centers, LANs, servers, networks, etc.
- Document a complete list of applications that support criminal justice activities. Also, identify and document other criminal justice applications, including spreadsheet and other single-user applications.
- Identify applications of program partners (State, etc.) that are significant to the county's criminal justice activities.
- Identify any outsourced IT functions, including application software development and maintenance.
- Develop a profile of the current county criminal justice IT functions: organization; coordination with the user community; and processes, including application configuration management, quality management, requirements management, project management, and contract management.

This document should not be interpreted as a critique of any employee, agency, or technology. We are simply describing key technologies as they currently exist.

Client Value

This deliverable is important because it provides Dakota County Criminal Justice personnel with an understanding of the current overall technology (IT) environment. Validation of this document indicates that the Dakota County CJIN and KPMG Consulting share a common understanding of the current technology inventory supporting the numerous criminal justice activities.

FINAL

KEY FINDINGS

Approach

To gather information for this report, KMPG Consulting:

- Interviewed key personnel responsible for technology support in each major criminal justice business process, including incident reporting, investigation, arrest, detention, adjudication and disposition.
- Requested the completion of KPMG's Current Information Technology Profile by key Dakota County technology personnel.

The following personnel contributed to the information documented in this model:

Steve Holmgren – Dakota County Public Defender's Office
Rosemary Fall - Minnesota Board of Public Defense
Robert Sykora – Minnesota Board of Public Defense
Joanne Kraftson – Dakota County Attorney's Office
Jay Stassen – Dakota County Attorney's Office
Ernie Swartout – Dakota County Sheriff's Department
Jerry Felton – Dakota County Sheriff's Department
Kristi Peterson – Eagan Police Department
Kevin Pikkaraine – Eagan Police Department
Tom Venables - Burnsville Police Department
Deborah Nelson – First Judicial District
Michael Kloos – Dakota County Community Corrections
Vicki Ahlers – Dakota County Community Corrections
John Mangan – Dakota County Information Technology Department
Larry Roe – Dakota County Information Technology Department
Jean Getz - Dakota County Information Technology Department

FINAL

Arlene Etzig - Dakota County Information Technology Department

ORGANIZATION OF THIS DOCUMENT

This document is organized by types of technology applications and profiles, listing the current status of each for the primary criminal justice systems within the county. There are eleven categories and are defined as follows:

- **Business Applications** : Business applications include enterprise (finance, human resources, etc.) and industry-specific applications. The business application profiles describe the custom-developed and vendor-provided business applications used by criminal justice agencies in Dakota County.
- **Productivity Applications**: Productivity applications include office suites (word-processor, spreadsheet, personal database, presentation tool, etc.), groupware, e-mail and fax services. The productivity application profiles describe the custom-developed and vendor-provided productivity applications used by criminal justice agencies in Dakota County.
- **Application Development Environment** : The application development environment includes application design, development and testing tools; enterprise application integration software (middleware); process modeling and workflow tools; industry reference models; configuration management software; software distribution software and application development methodologies. The application development environment profiles describe the application development components used by criminal justice agencies in Dakota County.
- **Information Repositories**: Information repositories store data, voice, video, image, and multimedia information. The repositories include relational database management systems (RDBMS), object database management systems (ODBMS), sequential access files, document management systems and document imaging systems. The tools associated with the repositories help administrators to design, build, modify, backup and restore the repositories. The information repository profiles describe the information repositories used by criminal justice agencies in Dakota County.
- **Workstations Profiles**: Workstations include desktop computers, laptop computers, terminals and mobile devices. The workstation profiles described in the following table represent the most common workstation configurations. However, this is not an inventory of all the workstations in criminal justice agencies in Dakota County.

FINAL

- **Server Profiles:** Servers include mainframe, midrange and LAN-based servers. The server profiles described in the following table represent, at minimum, the standard server configurations. They may also document many non-standard server configurations. However, this is not an inventory of all the servers in the criminal justice agencies in Dakota County.
- **Wide Area Network:** The wide area network (WAN) provides the network connection between geographic sites. WAN components include routers, bridges, gateways, hubs, switches, channel service units/digital service units (CSU/DSU), packet frame relay assembler and disassembler (PADs/FRADs), multiplexers/inverse multiplexers and other components. However, this is not a complete inventory of all WAN components in criminal justice agencies in Dakota County.
- **Local Area Network:** The local area network (LAN) provides the network connections within a geographic site. LAN components include hubs, switches, routers, gateways and other components. However, this is not a complete inventory of all LAN components in the criminal justice agencies in Dakota County.
- **System and Network Management:** The functions provided by system and network management tools include application management, network and system administration, automated storage management, network fault detection and performance monitoring. However, this is not a complete inventory of all system and network management tools in the criminal justice agencies in Dakota County.
- **Security Management:** The functions provided by security management tools include authentication, authorization, data integrity and intrusion detection. Authentication and authorization products include single sign-on software, directory services, digital certificates and firewalls. Data integrity products include hardware and software encryption. Audit products include intrusion detection and prevention. However, this is not a complete inventory of all security management tools in the criminal justice agencies in Dakota County.
- **External Services:** External services include network carriers and service providers, communication carriers and service providers, application service providers, facilities management providers, equipment maintenance and support providers, application maintenance and support providers, information repository maintenance and support providers, and consultants and contractors providing specific services. However, this is not a complete inventory of all external services provided to the criminal justice agencies in Dakota County.

FINAL

Business Application Profiles

Business applications include enterprise (finance, human resources, etc.) and industry-specific applications. The business application profiles described in the following table describe the custom-developed and vendor-provided business applications used by the criminal justice agencies in Dakota County.

| Application Name, Vendor and Version | Licenses | Functions | Users and Location | Hardware, Operating System, Information Repository and Versions | Programming Language and Application Interfaces | Maintenance Provider and Cost |
|--------------------------------------|---------------|--|---|---|---|---|
| City of Eagan | | | | | | |
| CDS/LOGIS Police System | Multiple | CAD (Computer Aided Dispatch) Records Management Mobile Computing Devices | City Police Department and Police Substation | HP3000 MPEXL 5.5 | COBOL NCIC, CJRS, MJNO | LOGIS and City IT Staff |
| ArcInfo | 2 Floating | GIS | General City use. City Hall, Police Dept. Maintenance Facility. | Novell and NT Servers | Support Visual Basic | LOGIS and City IT Staff |
| City of Burnsville | | | | | | |
| VisionAir, Inc | 35 concurrent | Computer Aided Dispatch Records Management Mobile for both police and Fire | 120 police and fire staff all together | 2 Compaq Proliant 5500R Dual PIII Xeon 500, 768MB RAM SQL 6.5 2 Compaq Proliant 1600R Dual PIII 500, 512MB RAM SQL 6.5 | ODBC, SQL NCIC, CJRS | VisionAir support, Internal IT support staff. |

FINAL

| Application Name, Vendor and Version | Licenses | Functions | Users and Location | Hardware, Operating System, Information Repository and Versions | Programming Language and Application Interfaces | Maintenance Provider and Cost |
|---|----------|--|---|--|---|--|
| ArcInfo v7.x From ESRI | 1 | GIS | General city use by engineering | IBM 300PL PIII 500 MS NT 4.0 Wrkstn SP6a | ODBC, Visual Basic | Dakota County land Surveyor office |
| ArcView 3.2 from ESRI | 13 | GIS applications for Spatial analysis, map creation, etc | Staff in each department | MS NT 4.0 Wrkstn SP6a on IBM workstations | ODBC, Visual Basic | Dakota County land Surveyor office, Internal IT support staff |
| Burnsville Warrants | 15 | Custom Warrant creation, retention application for serving warrants | Burnsville Investigation Staff | Windows NT 4.0 SP6a workstation, resides on NT Server for Police | FoxPro 3.1 | Clark Holden, Investigator, developer, support |
| Burnsville Alarm Tracking, Billing | 2 | Custom tracking and billing program for alarm ordinance | Burnsville Investigation Staff | Windows NT 4.0 SP6a workstation, resides on NT Server for Police | FoxPro 3.1 | Clark Holden, Investigator developer, support |
| Dakota County Sheriff's Department | | | | | | |
| ENFORS MASYS Computer Aided Dispatch | | Computer Aided Dispatch (CAD) | Sheriff's Department, Dispatch Center | Stratus, Model R5 (x2); Operating System – VOS; Information Repository – Indexed Flat Files | Cobol and "C" Application Interfaces: ENFORS RMS and 911 | MASYS Local support provided by contractor |

FINAL

| Application Name, Vendor and Version | Licenses | Functions | Users and Location | Hardware, Operating System, Information Repository and Versions | Programming Language and Application Interfaces | Maintenance Provider and Cost |
|--|----------|--------------------|--|---|--|---|
| ENFORS MASYS Records Management System | | Records Management | Sheriff's Department, Jail, County IT Department, So.St.Paul Police Department, Inver Grove Heights PD, Burnsville PD (history only) | Stratus, Model R5 (x2); Operating System – VOS; Information Repository – Indexed Flat Files | Auto-transfers to the state CJRS database (audits the success of transfers) | MASYS Local support provided by contractor |
| ENFORS MASYS Jail Management System | | Jail Management | Sheriff's Department, Jail, County IT Department, So.St.Paul Police Department, Inver Grove Heights PD, Burnsville PD (history only) | Stratus, Model R5 (x2); Operating System – VOS; Information Repository – Indexed Flat Files | Auto-transfers to the state CMIS – Corrections Management Information System; ENFORS Warrant module; Tenprinter (DBI); Mugshot (Imageware) | MASYS Local support provided by contractor |
| ENFORS MASYS ENFORS Warrant Module | | Warrant Tracking | Sheriff's Department and Dispatch | Stratus, Model R5 (x2); Operating System – VOS; Information Repository – Indexed Flat Files | TCIS; ENFORS Jail Module | MASYS Local support provided by contractor |
| ENFORS MASYS Case Management System | | Case Management | | | ENFORS Offense Module | |
| ENFORS MASYS Property Module | | Property Tracking | | | State CJRS | |

FINAL

| Application Name, Vendor and Version | Licenses | Functions | Users and Location | Hardware, Operating System, Information Repository and Versions | Programming Language and Application Interfaces | Maintenance Provider and Cost |
|--|----------|---|--|---|---|-------------------------------|
| Electrocom | | Mobile Data Terminal (MDT) Switch | Sheriff's Deputies; Squad Cars | | ENFORS RMS; ENFORS Warrant; ENFORS Jail | MDT Switch - Electrocom |
| Imageware | | Mugshots | Booking Officers; Jail Booking Station; Book and Release Station | | CJIS/NCIC; ENFORS Jail Module | Imageware |
| DBI | | Electronic Fingerprints | Booking Officers; Jail Booking Station; Book and Release Station | | CJIS/NCIC | DBI |
| Sheriff: TCIS Compare / Warrants Notification System | | Warrant Comparison | | Intel-Based NT 4.0 MS Access | MS-Access | Internal Support Staff |
| Sheriff: Civil Processing System (SHF) | | Process papers, invoicing system | 10 – 15 | IBM 390 Mainframe, MVS, Datacom DB | IDEAL, COBOL, Visual Basic 6.0 | Internal Support Staff |
| Dakota County Attorney | | | | | | |
| County Attorney: Civil Case Mgmt System (LAW) | | Case index for civil and family cases | 15 – 20 | IBM 390 Mainframe, MVS, Datacom DB | IDEAL, COBOL | Internal Support Staff |
| County Attorney: Criminal Prosecuting System (CPS) | | Criminal and juvenile delinquency case system | 15 – 20 | IBM 390 Mainframe, MVS, Datacom DB, SQL Server | IDEAL, COBOL, Visual Basic 6.0 | Internal Support Staff |
| County Attorney: Time Entry System (DTA) | | Capture attorney time spent on a case | 30 | IBM 390 Mainframe, MVS, Datacom DB | IDEAL, COBOL | Internal Support Staff |

FINAL

| Application Name, Vendor and Version | Licenses | Functions | Users and Location | Hardware, Operating System, Information Repository and Versions | Programming Language and Application Interfaces | Maintenance Provider and Cost |
|--|-----------------|--|---|---|---|--------------------------------|
| Dakota County Public Defender | | | | | | |
| Law Office DataBase (LODB) | unlimited | Tracks client, case, and disposition information and attorney | Public Defenders Office | Intel-based server Windows NT FoxPro 6.0 | Visual FoxPro 6.0 Interfaces to: Central Office DataBase (CODB) for upload TCIS for download | State Public Defender IT Staff |
| Web Page www.pubdef.state.mn.us | unlimited | Repository of Public Defender Briefs, Weslaw Access, and E-mail Access | All Public Defenders location independent | | | State Public Defender IT Staff |
| First District Court (TCIS) | | | | | | |
| TCIS | State Agreement | Case Management system | Apple Valley Hastings South St. Paul | Honeywell Mainframe DPS 7000 Honeywell IDS/II (Integrated Data Store) CODASYL Database File Servers - Intel Pentium III-based servers and Windows NT | Cobol 85, V – 10.5-3 | Supreme Court |
| Order for Protection (OFP) | State Agreement | Case Management system on domestic abuse | Apple Valley Hastings South St. Paul | Workstations are Windows NT 4.0 Sequel server at Supreme Court | | Supreme Court |

FINAL

| Application Name, Vendor and Version | Licenses | Functions | Users and Location | Hardware, Operating System, Information Repository and Versions | Programming Language and Application Interfaces | Maintenance Provider and Cost |
|--|-----------------|--|--|---|---|--------------------------------|
| JSI | State Agreement | Jury Management System | Hastings | Workstations are Windows NT 4.0 Sequel server at Supreme Court | Windows based ODBC Interface | JSI, Inc. – Statewide contract |
| CJIS | State Agreement | Access to criminal and driving records from DPS/BCA | Apple Valley Hastings South St. Paul | Application on a desktop | | Statewide contract |
| Dakota County Community Corrections | | | | | | |
| Court Services Tracking System (CSTS) | 160 SQL | Tracks client, case, and disposition information; stores chronos and assessment results | Community Corrections – all locations, Courts, Attorneys | MS SQL 6.5 | PowerBuilder | Barr Engineering |
| Safe Streets First Database | unlimited | Tracks data for the repeat DUI Offender Program | Community Corrections - all locations | Access database | Access, Visual Basic | Community Corrections |
| Fingerprint Tracking Database | unlimited | Addresses a Minnesota mandate to create a unique County ID number for juvenile offenders | Community Corrections - Juvenile Service Center | Access database | Access, Visual Basic | |
| JSC (Juvenile Service Center) Information System | unlimited | Tracks clients and client activity at the Dakota County Juvenile Service Center | Community Corrections – Juvenile Service Center | FoxPro Database | Access, Visual Basic | Community Corrections |
| Vwork Database | unlimited | Tracks volunteers and hours | | | | |

FINAL

| Application Name, Vendor and Version | Licenses | Functions | Users and Location | Hardware, Operating System, Information Repository and Versions | Programming Language and Application Interfaces | Maintenance Provider and Cost |
|--|-----------|--|--------------------|---|---|-------------------------------|
| Community Work Service Database | unlimited | Tracks clients, community work service sites, hours ordered, and hours completed | | Access database | Access, Visual Basic | Community Corrections |
| Sentence To Service (STS) Database | unlimited | Tracks inmates, community work service sites, hours ordered, and hours completed | | Access database | Access, Visual Basic | Community Corrections |
| New Chance Database | unlimited | Tracks clients and conditions for juveniles who participate in the New Chance program | | Access database | Access, Visual Basic | |
| Victim Offender Mediation (VOM) Database | unlimited | Tracks victims, offenders, and mediation sessions for restorative conference program. | | Access database | Access, Visual Basic | |
| School Success Program Database | unlimited | Tracks high-truancy juveniles for Corrections and Social Services | | Access database | Access, Visual Basic | |
| Sex Offender Database | unlimited | Tracks clients participating in sex offender evaluations and/or programming | | Access database | Access, Visual Basic | |
| ISR Database | unlimited | Tracks Supervised Release clients who are assigned to the Intensive agents (intensive community supervision) | | Access database | Access, Visual Basic | |

FINAL

| Application Name, Vendor and Version | Licenses | Functions | Users and Location | Hardware, Operating System, Information Repository and Versions | Programming Language and Application Interfaces | Maintenance Provider and Cost |
|---|--------------|---|---|---|---|-------------------------------|
| Community Corrections: Social Services Case Mgmt System (HCS) | | Used to enter children that the court has placed into various facilities. | | | | Internal Support Staff |
| Community Corrections: Vendor Payment System (HVP) | | Pay Vendors for cost of care | | | | Internal Support Staff |
| Community Corrections: Billing and Collections (HBC) | | Processes some costs of care that are billable back to parents or guardians | | | | Internal Support Staff |
| Client Index | Client Index | | Central repository for name and address information for Community Services systems. | | | |
| Dakota County | | | | | | |
| ArcInfo 8.1, ESRI | 10 floating | Various GIS activities and related support activities | Survey and Land Information Department | Windows NT Workstation and Server | Visual Basic | ESRI |

FINAL

| Application Name, Vendor and Version | Licenses | Functions | Users and Location | Hardware, Operating System, Information Repository and Versions | Programming Language and Application Interfaces | Maintenance Provider and Cost |
|--|----------------------------------|---|-------------------------------|---|---|-------------------------------|
| Map Objects 2.0 | 2 development +/- 250 deployment | Custom GIS applications | Survey and Land Information | Windows NT, Windows 95/98 | Visual Basic | ESRI |
| Internet Map Server 1.2 | 2 server 2 development | Custom web-based GIS applications | Survey and Land Information | Windows NT Workstation, Windows NT Server | Visual Basic | ESRI |
| ArcView 3.2 | 25 node-locked | Desktop GIS | Various departments | Windows NT, Windows 95/98 | ArcView Avenue, Visual Basic | ESRI |
| State of Minnesota | | | | | | |
| AFIS - Automated Fingerprint Identification System | | Biometrics Identification | DPS/BCA | DEC UNIX Sybase | | |
| CCH – Computerized Criminal History | | Criminal history information for felony, gross misdemeanors and selected misdemeanors | DPS/BCA | DEC RDB | | |
| CJIS – Criminal Justice Information System (Hot Files) | | Information on wanted/missing persons, stolen Property, Orders for Protection, etc. | DPS Criminal Justice Agencies | UNISYS | | |

FINAL

| Application Name, Vendor and Version | Licenses | Functions | Users and Location | Hardware, Operating System, Information Repository and Versions | Programming Language and Application Interfaces | Maintenance Provider and Cost |
|--|----------|--|---------------------------------------|---|---|-------------------------------|
| LEMS/CJDN – Law Enforcement Messaging System/Criminal Justice Data Network | | | Law Enforcement Agencies | UNISYS | | |
| OFP – Orders for Protection | | OFP Reporting/Tracking | Courts and Criminal Justice Agencies | Intel-based Server | CJIS Hot Files TCIS | |
| SSS – Statewide Supervision System | | Stores information on individual's probation conditions, detention status etc. | State/County Corrections | Intel – based Server | CSTS | |
| Federal Databases | | | | | | |
| CJRS – Criminal Justice Reporting System | | Repository for statistical crime data | FBI, DPS/BCA Law Enforcement Agencies | | | |
| NLETS – National Law Enforcement Telecommunications System | | Ability to request information on suspects | FBI, DPS/BCA Law Enforcement Agencies | | | |

FINAL

Productivity Application Profiles

Productivity applications include office suites (word-processor, spreadsheet, personal database, presentation tool, etc.), groupware, e-mail and fax services. The productivity application profiles described in the following table describe the custom-developed and vendor-provided productivity applications used by the criminal justice agencies in Dakota County.

| Application Name, Vendor and Version | Licenses | Functions | Users and Location | Hardware, Operating System, Information Repository and Versions | Programming Language and Application Interfaces | Maintenance Provider and Cost |
|--|----------|--|---|--|---|-------------------------------|
| City of Eagan | | | | | | |
| Microsoft Office 2000 Professional Microsoft Office 97 Professional | 250 | Word processor Spreadsheet Presentation Database E-mail client | All city personnel located in 14 separate buildings | Microsoft Windows 98 Microsoft Windows 95 Microsoft NT 4.0 Microsoft Windows 2000 | Windows API | Internal IT support staff |

FINAL

| Application Name, Vendor and Version | Licenses | Functions | Users and Location | Hardware, Operating System, Information Repository and Versions | Programming Language and Application Interfaces | Maintenance Provider and Cost |
|--|----------|--|---|---|---|-------------------------------|
| Microsoft Exchange 5.5 | | E-Mail Server | All city personnel | NT Server 4.0 | Visual Basic | Internal IT support staff |
| City of Burnsville | | | | | | |
| Microsoft Office 97 Professional | 250 | Word processor Spreadsheet Presentation Database E-mail client | All city personnel located in 9 different locations | Microsoft Windows NT Workstation 4.0 | Windows API | Internal IT support staff |
| MS Office 2000 Professional | 20 | Word Processor Spreadsheet Presentation Database E-Mail Client | IT Staff, Laptops 10 non-police staff | Windows 2000 Professional Windows NT 4.0 Workstation | Windows API | Internal IT support staff |
| MS Exchange 5.5 | 400 | GroupWare | All city personnel including council and outside groups | Windows NT 4.0 Server | Visual Basic | Internal IT Support Staff |
| Dakota County Sheriff's Department (see Dakota County IT) | | | | | | |
| Dakota County Attorney (see Dakota County IT) | | | | | | |

FINAL

| Application Name, Vendor and Version | Licenses | Functions | Users and Location | Hardware, Operating System, Information Repository and Versions | Programming Language and Application Interfaces | Maintenance Provider and Cost |
|---|----------|---|--|--|---|-------------------------------|
| Dakota County Public Defender | | | | | | |
| Microsoft Office 97 | 27 | Word processor Spreadsheet Presentation | Public Defenders Office | Microsoft Windows 95B | Windows 95 | |
| Microsoft Outlook | | E-mail Calendar | Public Defenders Office | Microsoft Windows 95B | Windows 95 | |
| First District Court | | | | | | |
| Microsoft Office 97 Small Business & Professional | 250 | Word processor Spreadsheet Outlook | Apple Valley Hastings South St. Paul | Currently mixed environment with Windows 95 and Win NT New purchases are Win 2000 | | Internal support staff |
| Dakota County Community Corrections | | | | | | |
| Microsoft Office 97 Professional | | Word processor Spreadsheet Presentation Database | Community Corrections – all locations | Microsoft Windows 95B | Windows 95 | Internal support staff |

FINAL

| Application Name, Vendor and Version | Licenses | Functions | Users and Location | Hardware, Operating System, Information Repository and Versions | Programming Language and Application Interfaces | Maintenance Provider and Cost |
|--------------------------------------|----------|--|-------------------------------------|---|---|---|
| Dakota County IT | | | | | | |
| Microsoft Office 97 | 1450 | Word processor Spreadsheet Presentation Database E-mail client | 7 networked sites within the County | Microsoft Windows 95/98 | SQL TN3270 FrontPage | Local training and internal support staff |
| Microsoft Outlook 98 | 1450 | Email / Scheduling | 7 networked sites within the County | Microsoft Windows 95/98 | Visual Basic | Local training and internal support staff |
| Microsoft Project | 12 | Project Management | IT and some depts. in the County | Microsoft Windows 95/98 | | Local training and internal support staff |

FINAL

Application Development Environment Profiles for Dakota County

The application development environment includes application design, development and testing tools; enterprise application integration software (middleware); process modeling and workflow tools; industry reference models; configuration management software; software distribution software and application development methodologies. The application development environment profiles described in the following table describe the application development components used by the criminal justice agencies in Dakota County.

| Component Name, Vendor and Version | Licenses | Functions | Users and Location | Hardware, Operating System, Information Repository and Versions | Programming Language and Component Interfaces | Maintenance Provider and Cost |
|------------------------------------|----------|----------------------------------|---|---|---|---|
| City of Egan | | | | | | |
| Front Page | 5 | Web Site Development | IT Staff, Community Dev. and Utilities | Windows NT 4.0 Windows 2000 | HTML, CGI Scripts | |
| Visual Basic | 2 | GIS | Community Dev. and Utilities | Windows NT 4.0 Windows 2000 | Visual Basic | |
| City of Burnsville | | | | | | |
| FrontPage 2000 | 10 | Web site development, management | IT Staff, Misc. staff | Windows NT 4.0 SP6a Windows 2000 | HTML, CGI Scripts | Internal IT support staff |
| MS Access v7.0 | 150 | Database creation, management | All staff | Windows NT 4.0 SP6a workstation | ODBC | Internal IT support staff |
| ArcView 3.2 Avenue | 13 | Custom GIS scripting, mapping | Staff in GIS group in several departments | Windows NT 4.0 SP6a ArcView 3.2, GIS databases reside on Network File Server | Visual Basic | Internal IT Support staff Dakota County Land Surveyor Office staff |

FINAL

| Component Name, Vendor and Version | Licenses | Functions | Users and Location | Hardware, Operating System, Information Repository and Versions | Programming Language and Component Interfaces | Maintenance Provider and Cost |
|---|-----------|---|------------------------------------|---|---|--------------------------------------|
| TrackIT! Ver 4.0 BlueOcean Software | 250 | Software distribution, inventory control, work order processing | IT staff, all staff | Windows NT 4.0 SP6a Server workstation, resides on NT Server for WAN | ODBC, HTML | Internal IT Support staff |
| Ghost V6.x | 150 | Stored configuration images of hardware and software profiles for restore | All staff | Windows NT 4.0 SP6a workstation, resides on NT Server for Police | | Internal IT support staff |
| Visio Professional 5.0 | 35 | Process modeling and workflow tools, configuration management | Police, Fire, IT staff | Windows NT 4.0 SP6a | OLE, ODBC | Internal IT support staff |
| Dakota County Sheriff's Department | | | | | | |
| Cobol | | ENFORS created using Cobol | Vendor IT support staff | Stratus, Model R5 (x2); Operating System – VOS; Information Repository – Indexed Flat Files | Cobol | MASYS and local vendor support staff |
| C | | ENFORS interfaces created using "C" | Vendor IT support staff | Stratus, Model R5 (x2); Operating System – VOS; Information Repository – Indexed Flat Files | C | MASYS and local vendor support staff |
| Visual FoxPro 6.0 | unlimited | Data Modeling Database Design Graphical User Interface Creation | One Public Defenders Office | Intel Microsoft Windows NT | Visual FoxPro 6.0 | State Public Defender IT Staff |

FINAL

| Component Name, Vendor and Version | Licenses | Functions | Users and Location | Hardware, Operating System, Information Repository and Versions | Programming Language and Component Interfaces | Maintenance Provider and Cost |
|------------------------------------|----------|---|--|---|--|-------------------------------|
| Dakota County IT | | | | | | |
| Visual Basic 6.0 | 15 | Object modeling Functional testing Performance testing Methodology Requirements management Defect tracking | Application Developers in IT at Hastings Admin Building | Intel Pentium III MS Windows 98 Microsoft Windows NT | Microsoft Visual C++ Java Developers Kit 1.2 Integration with Microsoft Visual Studio | Internal support staff |
| MS FrontPage | 10 | Web Site Development | IT Staff, Community Dev. and Utilities | Windows NT 4.0 Windows 2000 | HTML, CGI Scripts | |
| Visual InterDev | 10 | | | | | |
| IDEAL | | 4GL screen and application tool for mainframe systems | | | | |
| COBOL | | Development language for mainframe based systems | | IBM 7060-H30 OS/390 2.6 | Cobol | |

FINAL

Information Repository Profiles

Information repositories store data, voice, video, image, and multimedia information. The repositories include relational database management systems (RDBMS), object database management systems (ODBMS), sequential access files, document management systems and document imaging systems. The tools associated with the repositories help administrators to design, build, modify, backup and restore the repositories. The information repository profiles described in the following table describe the information repositories used by the criminal justice agencies in Dakota County.

| Repository or Tool Name, Vendor and Version | Licenses | Functions | Users and Location | Hardware, Operating System, Information Repository and Versions | Programming Language and Interfaces | Maintenance Provider and Cost |
|---|-----------|---|--|---|-------------------------------------|-------------------------------|
| City of Eagan | | | | | | |
| Oracle 7.1 | | Relational database mgmt. system Utilities Water distribution/collection | City Hall and Maintenance Facility | | | |
| LOGIS | unlimited | Police Records System (CAD, RMS, etc.) | Police personnel City Police Department | HP 3000 | | |
| SQL Server 6.5 | 1 | Park and Rec's activity registration and facilities reservation | Park and Rec | HP 9000 8xx HP-UX 10.0.2 | ODBC | Internal support staff |
| SQL Server 7.0 | 1 | Equipment Mgmt. | Streets | | | |

City of Burnsville

FINAL

| Repository or Tool Name, Vendor and Version | Licenses | Functions | Users and Location | Hardware, Operating System, Information Repository and Versions | Programming Language and Interfaces | Maintenance Provider and Cost |
|---|-----------|---|---|--|-------------------------------------|--|
| SQL Server 6.5 | 50 | | Police/Fire personnel | Compaq Proliant 5500R Dual PIII Xeon 500, 768MB RAM MS NT 4.0 | ODBC | Vision Software Inc. Internal IT support staff |
| SQL Server 7.0 | 3 | | Police personnel | IBM PC 300PL's PIII 600MHZ 256 MB RAM, MS NT 4.0 SP6a | ODBC | ImageWare Inc. and Internal IT support staff |
| SQLBase 7.1.1 | 10 | Relational database management system for CAD/RMS | Police, fire, engineering, city clerk personnel | Compaq Proliant 3000 Workgroup Servers, PII 300, 348RAM ea. MS NT 4.0 | ODBC, html, | Mid America Business Systems, Inc. and Internal IT support staff |
| IBM DB2 | Unlimited | Relational database management system for Digital Mugshot Repository | All staff | IBM AS400 9402-400 2132. V4R5 | ODBC, RPG | IBM, New World Systems Inc., Internal IT support staff |
| ArcServe 6.61 | 26 | WAN/LAN storage management | IT staff, City Hall | 1 Compaq Proliant 1600, Dual PIII 600 server, Win NT 4.0 SP6a, 1 Compaq Proliant 1850R Dual PIII 450 Win NT 4.0 SP6a, with 2 8150 Cybernetic 15 tape autoloader libraries | ODBC | IT internal support |
| FoxPro v3X | Runtime | Relational database management system for custom public safety applications | Investigation, Patrol, Admin | Compaq Proliant 3000 Workgroup Servers, PIII 500, 512RAM MS NT 4.0 | ODBC | Investigator, internal IT staff |
| Dakota County Sheriff's Department | | | | | | |

FINAL

| Repository or Tool Name, Vendor and Version | Licenses | Functions | Users and Location | Hardware, Operating System, Information Repository and Versions | Programming Language and Interfaces | Maintenance Provider and Cost |
|---|-----------|--|--|---|-------------------------------------|---|
| Cobol Indexed Flat Files | unlimited | ENFORS data files | Sheriff's Department, Jail, County IT Department, So. St. Paul Police Department, Inver Grove Heights PD, Burnsville PD (history only) | Stratus, Model R5 (x2); Operating System – VOS; Information Repository – Indexed Flat Files | Cobol and "C" | MASYS Local support provided by contractor |
| Dakota County Public Defender | | | | | | |
| Visual FoxPro v6.0 | unlimited | Relational database management system | Public Defenders Office | Intel Windows NT 4.0 Visual FoxPro 6.0 | ODBC | State Public Defender IT Staff |
| First District Court | | | | | | |
| Access, Microsoft | 1 | CJAD - Relational database management system | Deb Nelson – Hastings with access to St. Paul | St. Paul Repository | ODBC | Supreme Court |
| SQL Server, Microsoft | | JSI - Jury Management | 3 users Hastings | Sequel server at Supreme Court | ODBC | JSI, Inc. Statewide Contract |
| SQL Server, Microsoft | | OFP - Case management system on domestic abuse | Hastings Apple Valley So. St. Paul | Sequel server at Supreme Court | ODBC | Supreme Court |
| ISD/II CODASYL Database Honeywell | | TCIS - Case management system | Hastings Apple Valley So. St. Paul | Honeywell dps 7000 ISD/II CODASYL Database | Cobol 85 | Supreme Court |

FINAL

| Repository or Tool Name, Vendor and Version | Licenses | Functions | Users and Location | Hardware, Operating System, Information Repository and Versions | Programming Language and Interfaces | Maintenance Provider and Cost |
|---|----------|---------------------------------------|--------------------|---|---|-------------------------------|
| Dakota County IT | | | | | | |
| MS SQL 7.0 | | Relational database management system | | Intel – Based MS NT 4.0 | VB 3.0, VB 6.0, MS Access | Internal support staff |
| CA Datacom DB | | Older RDBMS | IT | IBM 7060 – H30 OSS/390 2.6 CA Datacom DB | VB 3.0, VB 6.0, MS Access, IDEAL, COBOL | Internal support staff |

FINAL

Workstation Profiles for Dakota County

Workstations include desktop computers, laptop computers, terminals and mobile devices. The workstation profiles described in the following table represent the most common workstation configurations. However, this is not an inventory of all the workstations in the criminal justice agencies in Dakota County.

| Qty | Manufacturer, Model, CPU and Memory | Storage and Peripherals | Network/Remote Connectivity and Protocols | Operating System and Web Browser | Users and Location | Maintenance Provider and Cost |
|---------------------------|---|--|---|---|---|-------------------------------|
| City of Eagan | | | | | | |
| | Dell Dimension Intel Pentium III - 850 MHz 128 MB RAM | 20 GB hard drive 32X CD-ROM 1.44 MB Floppy 100 Mb/s Zip Drive | 100Mb/s Ethernet 56 KB modem TCP/IP | Windows NT 4.0, Windows 95 or Windows 98 Internet Explorer | City personnel in 13 separate city owned buildings. 14 th building in 2002 | Internal support staff |
| City of Burnsville | | | | | | |
| 35 | IBM PC 300PL Intel Pentium III - 600 MHz 128 MB RAM | 20 GB hard drive 32X CD-ROM 1.44 MB Floppy Multimedia | 100Mb/s Ethernet TCP/IP | Windows NT 4.0 SP6a Internet Explorer 5.01 | City Staff approx. 35 spread out between users at all locations | Internal support staff |
| 150 | IBM PC 300PL Intel Pentium III – 500 MHz 128 MB RAM | 13 GB Hard drive 24X CD-ROM 1.44 MB Floppy Multimedia | 100Mb/s Ethernet TCP/IP | Windows NT 4.0 SP6a Internet Explorer 5.01 | City Staff approx. 150 spread out between users at all locations | Internal support staff |
| 25 | IBM PC 300PL Intel Pentium II – 400 MHz 128 MB RAM | 10 GB Hard drive 24X CD-ROM 1.44 MB Floppy Multimedia | 100Mb/s Ethernet TCP/IP | Windows NT 4.0 SP6a Internet Explorer 5.01 | City Staff approx. 25 spread out between users at all locations | Internal support staff |

FINAL

| Qty | Manufacturer, Model, CPU and Memory | Storage and Peripherals | Network/Remote Connectivity and Protocols | Operating System and Web Browser | Users and Location | Maintenance Provider and Cost |
|---|---|--|---|---|---|-------------------------------|
| 25 | IBM PC 300PL Intel Pentium II – 266 MHz 128 MB RAM | 10 GB Hard drive 24X CD-ROM 1.44 MB Floppy Multimedia | 100Mb/s Ethernet TCP/IP | Windows NT 4.0 SP6a Internet Explorer 5.01 | City Staff approx. 25 spread out between users at all locations | Internal support staff |
| Dakota County Sheriff's Department (see Dakota County IT) | | | | | | |
| Dakota County Attorney (see Dakota County IT) | | | | | | |
| Dakota County Public Defender | | | | | | |
| 27 | 300-350+MHz Intel Celeron 64-128MB | | 10Mb/s IP | Windows 95 | Public Defenders Office | |
| First District Court | | | | | | |
| 200 | High End PC: 650 Pentium III 256 MB of Memory, 8 MB of video RAM | 8 GB hard drive 12X CD-ROM 1.44 MB Floppy | 10/100BASE-T Network Interface Card | Windows NT workstation 4.0 | Hastings Apple Valley So. St. Paul | Internal support staff |
| Dakota County Community Corrections (see Dakota County IT) | | | | | | |

FINAL

| Qty | Manufacturer, Model, CPU and Memory | Storage and Peripherals | Network/Remote Connectivity and Protocols | Operating System and Web Browser | Users and Location | Maintenance Provider and Cost |
|-------------------------|--|----------------------------|---|---|-------------------------------------|--|
| Dakota County IT | | | | | | |
| 1450 | Primarily Dell, minimum of 200mhz, 64mb RAM and up to current market offerings, 3-4 year replacement cycle | Minimum 4gb h/d CD, floppy | Token Ring, moving to 10/100 Ethernet, TCP/IP | Workstations are Windows 95, Servers NT and Novell, MS IE 5.5 | 7 Networked sites within the County | 3 year on site warranty for new hardware, and internal support staff |

FINAL

Server Profiles for Dakota County

Servers include mainframe, midrange and LAN-based servers. The server profiles described in the following table represent, at minimum, the standard server configurations. They may also document many non-standard server configurations. However, this is not an inventory of all the servers in the criminal justice agencies in Dakota County.

| Qty | Manufacturer, Model, CPU and Memory | Storage and Peripherals | Network/Remote Connectivity and Protocols | Operating System and Web Browser | Description and Location | Statistics (Concurrent Users, Utilization, etc.) | Maintenance Provider and Cost |
|----------------------|--|--|---|----------------------------------|---|--|---------------------------------|
| City of Eagan | | | | | | | |
| 1 | HP NetServer LH4 | 36 GB hard drive HP SureStore DLT Auto Loader Raid 5 | 100 Mb/s switched network | Novell 5.0 | Database Server Eagan City Hall | 300 concurrent users, 10-15% peak utilization | Nexus and Internal IT Staff |
| 1 | Compaq Proliant 1500-8600sp 166 8.6/32 | 7 GB hard drive 27 GB Compaq storage cabinet | 100 Mb/s switched network | Novell 5.0 | Database Server Eagan Maintenance Facility | 50 concurrent users 10-15% peak utilization | Nexus and Internal IT Staff |
| 1 | HP LC3 | 9 GB hard drive Sony Optical Storage Library 25 disk juke box | 100 Mb/s switched network | NT 4.0 SQL 6.1.2 | Optical Image data base server City Hall | | MidAmerica Business Systems |
| 1 | HPNet Server E45 | 18 GB mirrored hard drive | 100 Mb/s switched network | NT 4.0 | GIS Server | Arch Info Software 3 concurrent user license | Nexus. LOGIS, Internal IT staff |

FINAL

| Qty | Manufacturer, Model, CPU and Memory | Storage and Peripherals | Network/Remote Connectivity and Protocols | Operating System and Web Browser | Description and Location | Statistics (Concurrent Users, Utilization, etc.) | Maintenance Provider and Cost |
|---------------------------|---|---|---|---|---|--|-------------------------------|
| City of Burnsville | | | | | | | |
| 1 | IBM AS400 9402 model 400 2132 processor 168MB RAM | 1 - IBM 6530 disk controller 7 - IBM 6606 1.9 GB Disks 3 - IBM 6602 1.1 GB disks 1 - IBM CDROM | 1 - IBM 2617 LAN adapter 10Mb/s Ethernet TCPIP | OS/400 V4R5 MS Explorer 5.01 | Database Server For financial applications located in IT Center at City Hall | 80 concurrent users, 65% peak utilization | IBM |
| 1 | Compaq Proliant 3000 Workgroup Servers, Dual PIII 450, 348 MB RAM | 1 - Compaq 2DH Array Controller 36.4 GB RAID 5 Disk Array 24X CD-ROM 1.44 MB Floppy | 100Mb/s Ethernet TCP/IP WEBEM access | MS Windows NT 4.0 SP6a MS Explorer 5.01 | IT Test Server for application deployment and testing | 10 concurrent users 50% peak utilization | Internal IT support staff |
| 1 | Compaq Proliant 3000 Workgroup Servers, Dual PIII 450, 512 MB RAM | 1 - Compaq 3200 Array Controller 36.4 GB RAID 5 Disk Array 24X CD-ROM 1.44 MB Floppy | 2 100Mb/s Ethernet NICs for load balancing TCP/IP WEBEM access | MS Windows 2000 server0 SP1 MS Explorer 5.01 | WebMail server for external email access | 25 concurrent users 5% peak utilization | Internal IT support staff |
| 1 | Compaq Proliant 3000 Workgroup Servers, Dual PII 300MHz, 328 MB RAM | 1 - Compaq 2DH Array Controller 36.4 GB RAID 5 Disk Array 24X CD-ROM 1.44 MB Floppy | 100Mb/s Ethernet TCP/IP WEBEM access | MS Windows NT 4.0 SP6a MS Explorer 5.01 | Document Imaging Application Server City Hall, IT Center | 10 concurrent users 5% peak utilization | Internal IT support staff |

FINAL

| Qty | Manufacturer, Model, CPU and Memory | Storage and Peripherals | Network/Remote Connectivity and Protocols | Operating System and Web Browser | Description and Location | Statistics (Concurrent Users, Utilization, etc.) | Maintenance Provider and Cost |
|-----|--|---|---|--|--|--|-------------------------------|
| 1 | Compaq Proliant 3000 Workgroup Servers, Dual PII 400MHz, 512RAM | 1 – Compaq 2DH Array Controller 40.7 GB RAID 5 Disk Array 24X CD-ROM 1.44 MB Floppy | 100Mb/s Ethernet TCP/IP WEBEM access | MS Windows NT 4.0 SP6a MS Explorer 5.01 | BDC, Exchange 5.5 Server, WINS City Hall, IT Center | 300 concurrent users 7% peak utilization | Internal IT support staff |
| 1 | Compaq Proliant 3000 Workgroup Servers, Dual PIII 500MHz, 512 MB RAM | 1 – Compaq 3200 Array Controller 63.7 GB RAID 5 Disk Array 32X CD-ROM 1.44 MB Floppy | Dual 100Mb/s NIC load balancing Ethernet TCP/IP WEBEM access | MS Windows NT 4.0 SP6a MS Explorer 5.01 | Application Server File Server City Hall, IT Center | 150 concurrent users 5% peak utilization | Internal IT support staff |
| 1 | Compaq Proliant 3000 Workgroup Servers, Dual PII 333MHz, 128 MB RAM | 1 – Compaq 2DH Array Controller 22 GB RAID 5 Disk Array 24X CD-ROM 1.44 MB Floppy | 100Mb/s NIC Ethernet TCP/IP WEBEM access | MS Windows NT 4.0 SP6a MS Explorer 5.01 | PDC, Print Server, WINS City Hall, IT Center | 175 concurrent users 5% peak utilization | Internal IT support staff |
| 1 | Compaq Proliant 3000 Workgroup Servers, Dual PII 333MHz, 256 MB RAM | 1 – Compaq 2DH Array Controller 22 GB RAID 5 Disk Array 24X CD-ROM 1.44 MB Floppy | 100Mb/s NIC Ethernet TCP/IP WEBEM access | MS Windows NT 4.0 SP6a MS Explorer 5.01 | BDC, Print Server, WINS Maint. Facility, | 50 concurrent users 5% peak utilization | Internal IT support staff |
| 2 | Compaq Proliant 5500R Dual PIII Xeon 500, 768MB RAM | 1 – Compaq 3200 Array Controller 4 – 9.1 GB Hot Swap ea. | 100Mb/s Ethernet TCP/IP | MS Windows NT 4.0 SP6a MS Explorer 5.01 | Computer Aided Dispatch Primary and Secondary Servers, IT Center in Police | 5 concurrent users, 10% peak utilization | Internal IT support staff |
| 1 | Compaq Proliant 2500 Dual Pentium pro 200 | 1 – Compaq 2DH Array Controller 4 – 4.3 GB Hot Swap ea. | 100Mb/s Ethernet TCP/IP | MS Windows NT 4.0 SP6a MS Explorer 5.01 | Internal Intranet Server with IIS 4.0 and FTP server for GIS | 250 concurrent users 25% peak utilization | Internal IT support staff |

FINAL

| Qty | Manufacturer, Model, CPU and Memory | Storage and Peripherals | Network/Remote Connectivity and Protocols | Operating System and Web Browser | Description and Location | Statistics (Concurrent Users, Utilization, etc.) | Maintenance Provider and Cost |
|-----|--|---|--|--|--|--|-------------------------------|
| 1 | Compaq Proliant 2500 Dual Pentium pro 180 | 1 – Compaq 2DH Array Controller 4 – 4.3 GB Hot Swap ea. | 100Mb/s Ethernet TCP/IP | MS Windows NT 4.0 SP6a MS Explorer 5.01 | PDC for youth center domain | 10 concurrent users 15% peak utilization | Internal IT support staff |
| 1 | Compaq Proliant 1850R, Dual PII 400, 256MB RAM | 1 – Compaq 2DH Array Controller 4 – 4.3 GB Hot Swap drives | 10/100Mb/s Compaq/Intel NIC TCP/IP | MS Windows NT 4.0 SP6a MS Explorer 5.01 | BDC and File Server for Ice Center, Burnsville Ice Center | 6 concurrent users 10% peak utilization | Internal IT support staff |
| 1 | Compaq Proliant 1850R, Dual PIII 450, 256MB RAM | 2 – 4.3 GB Hot Swap drives | 10/100Mb/s Compaq/Intel NIC TCP/IP | MS Windows NT 4.0 SP6a MS Explorer 5.01 | BDC/Tape library backup server for Police Systems. IT Center in Police | 50 concurrent users 25% peak utilization | Internal IT support staff |
| 1 | Compaq Proliant 1850R, PIII 600, 256MB RAM | 1 – Compaq 2DH Array Controller 4 – 4.3 GB Hot Swap drives RAID 5 | 10/100Mb/s Compaq/Intel NIC TCP/IP | MS Windows 2000 Server SP1 MS Explorer 5.01 | Pager Server for Police/Fire, IT Center in Police station | 5 concurrent users 5 % peak utilization | Internal IT support staff |
| 1 | Compaq Proliant 1850R, Dual PIII 500, 384 MB RAM | 1 – Compaq 3200 Array Controller 4 – 9.1 GB Hot Swap drives RAID 5 | 10/100Mb/s Compaq/Intel NIC TCP/IP | MS Windows NT 4.0 SP6a MS Explorer 5.01 | Fire RMS server IT Center in Police | 15 concurrent users 5% peak utilization | Internal IT support staff |
| 1 | Compaq Proliant 1600, Dual PIII 600MHz, 256 MB RAM | 1 – Compaq 3200 Array Controller 4 – 9.1 GB Hot Swap drives RAID 5 | Dual 100Mb/s Ethernet NICs for load balancing TCP/IP | MS Windows NT 4.0 SP6a MS Explorer 5.01 | WAN tape library backup server, IT Center City Hall | 5 concurrent users 2% utilization | Internal IT support staff |

FINAL

| Qty | Manufacturer, Model, CPU and Memory | Storage and Peripherals | Network/Remote Connectivity and Protocols | Operating System and Web Browser | Description and Location | Statistics (Concurrent Users, Utilization, etc.) | Maintenance Provider and Cost |
|-----|--|---|---|---|---|--|-------------------------------|
| 3 | Compaq Proliant 1600R Dual PIII 500, 512MB RAM | 1 – Compaq 3200 Array Controller 4 – 9.1 GB Hot Swap drives RAID 5 | 10/100Mb/s Compaq/Intel NIC TCP/IP | MS Windows NT 4.0 SP6a MS Explorer 5.01 | Primary and Secondary Records Management Servers for Police, Message Switch for mobile, IT Center in Police | 35 concurrent users 10% peak utilization | Internal IT support staff |
| 1 | Compaq Proliant 1600R Dual PII 450, 512MB RAM | 1 – Compaq 3200 Array Controller 4 – 9.1 GB Hot Swap drives RAID 5 | 10/100Mb/s Compaq/Intel NIC TCP/IP | MS Windows NT 4.0 SP6a MS Explorer 5.01 | BDC server/ file server for Public Access Facility | 8 concurrent users 10% peak utilization | Internal IT support staff |
| 1 | Compaq Proliant ML 350 PIII 800, 256MB RAM | 1 – Compaq 4DH Array Controller 2 – 9.1 GB hot swap drives RAID 1 | 10/100Mb/s Compaq/Intel NIC TCP/IP | MS Windows NT 4.0 SP6a MS Explorer 5.01 | State DataMax Communications Server, IT Center in Police | 10 concurrent users 10% peak utilization | Internal IT support staff |
| 1 | Compaq Proliant 800 Pentium Pro 200, 256MB RAM | 4.3 GB WD Seagate SCSI drive. | 10/100Mb/s Compaq/Intel NIC TCP/IP | MS Windows NT 4.0 SP6a MS Explorer 5.01 | Compaq Insight management Server for monitoring all servers, IT Center | 4 concurrent users 25% peak utilization | Internal IT support staff |
| 1 | Compaq Prosignia 500 Pentium 120, 128 MB RAM | 4.3 SCSI drive | 10/100Mb/s Compaq NIC | MS Windows NT Server 4.0 SP6a MS Explorer 5.01 | Test Server for IT staff to try applications | 4 concurrent users 50% peak utilization | Internal IT support staff |

FINAL

| Qty | Manufacturer, Model, CPU and Memory | Storage and Peripherals | Network/Remote Connectivity and Protocols | Operating System and Web Browser | Description and Location | Statistics (Concurrent Users, Utilization, etc.) | Maintenance Provider and Cost |
|--|---|-------------------------|---|----------------------------------|--------------------------|--|-------------------------------|
| Dakota County Sheriff's Department | | | | | | | |
| 2 | Stratus, Model R5 | | 10Mb/s TCP/IP | Operating System – VOS | ENFORS Server County | | Internal IT support staff |
| Dakota County Attorney (see Dakota County IT) | | | | | | | |
| Dakota County Public Defender | | | | | | | |
| 1 | | | 10Mb/s RAS Server IP | Windows NT 4.0 | Public Defenders Office | | |
| First District Court | | | | | | | |
| 1 | Gateway ALR 8300 Server Pent.III, 550 MHz 256MB RAM | 18 GB Hard Drive | | | Apple Valley | | |
| 1 | Gateway ALR 8300 Server Pent.III, 550 MHz 256MB RAM | 18 GB Hard Drive | | | Hastings | | |
| 1 | Gateway G6 Server Pent. Pro 200 MHz 256MB RAM | 2 GB Hard Drive | | | South St. Paul | | |

FINAL

| Qty | Manufacturer, Model, CPU and Memory | Storage and Peripherals | Network/Remote Connectivity and Protocols | Operating System and Web Browser | Description and Location | Statistics (Concurrent Users, Utilization, etc.) | Maintenance Provider and Cost |
|-------------------------|-------------------------------------|---|---|--|--|--|-------------------------------|
| 1 | Compaq Mail Server | (3) 4 GB hard drive 24X CD-ROM 1.44 MB Floppy | Ethernet TCP/IP | Win NT 4.0 Server MS Exchange 5.5 I.E. 4.0 SP2 | Hastings – Mail Server for 1 st Dist. | 140 approx. (Dakota Co.) | Internal support staff |
| Dakota County IT | | | | | | | |
| 1 | Proliant 1600 576 MB | External 7-18GB raid 5 DGR ultra raid card | 2 - Compaq 16/4 IBM PC TR | Netware 4.11 | File Server Hastings, JDC | | |
| 1 | Proliant 1600 512 MB | External 5-18 GB raid 5 Smart Array 3200 | Netelligent 10/100 | Netware 4.11 | File Server Farmington | | |
| 1 | Proliant 2500 416 MB | External 3-4GB 7200 raidflex Adaptec PCI 2940w | 2 - Madge PCI t/r | Netware 4.11 | File Server Wentworth | | |
| 1 | Proliant 1600 320 MB | External 3-18GB raid 5 DGR raid card | Madge PCI TR | Netware 4.11 | File server S. St. Paul | | |
| 1 | Proliant 5000 384 MB | External 5-4GB 7200 raidflex Adaptec PCI 2940w | Eth Nic Cpq 3123 | Netware 4.11 | Novell NDS Master Hastings, JDC | | |
| 1 | Proliant 1600R 192 MB | Internal 18.2 GB | Madge PCI t/r | Netware 4.11 | SAA Gateway Hastings, JDC | | |
| 1 | Proliant 800 144 MB | External 3-9GB 7200 raidflex SD DGR Raidcard | 2 - Madge PCI t/r | Netware 4.11 | File Server Marie Street | | |

FINAL

| Qty | Manufacturer, Model, CPU and Memory | Storage and Peripherals | Network/Remote Connectivity and Protocols | Operating System and Web Browser | Description and Location | Statistics (Concurrent Users, Utilization, etc.) | Maintenance Provider and Cost |
|-----|-------------------------------------|--|---|----------------------------------|---|--|-------------------------------|
| 1 | Proliant 1600 544 MB | External 7-9GB 7200 raidflex SD DGR Raidcard | 2 - Madge PCI t/r | Netware 4.11 | File Server Apple Valley | | |
| 1 | Proliant 2500 272 MB ECC | External 7-4GB Raid 5 Adaptec PCI 2940 | Madge PCI t/r | Netware 4.11 | File Server Spring Park | | |
| 1 | Proliant 5000 192 MB | External 7-9GB Raid 5 DGR raid card Adaptec 2940w | Netflex t/r | Netware 4.11 | Law Library CD Server Hastings, JDC | | |
| 1 | Compaq ML570 1GB | Internal 4-36GB | Madge PCI t/r | Netware 4.11 | File Server Hastings JDC | | |
| 1 | Proliant 800 512 MB | External 1-9GB Int. SCSI | NE3123 100Mbps | NT 4.0 SP4 | NT Batch Scheduler Hastings | | |
| 1 | Proliant 5000 768 MB ECC | External 5-4GB 7200 raidflex Adaptec PCI 2940w | IBM TR LanStreamer Compaq t/r eisa | NT 4.0 SP4 | Production SQL 6.5 Hastings JDC | | |
| | Dell Optiplex 200 64 MB | 1-3GB | Intel 10/100 PRO+ | NT 4.0 SP4 | NT Print Server Hastings JDC | | |
| 1 | Proliant 800 96 MB | 1-4GB | | NT 4.0 SP4 | NT SNA Server Hastings JDC | | |
| 1 | Proliant 1200 416 MB | 3-9GB | Netelligent 10/100 | NT 4.0 SP4 | SQL 6.5 Test Hastings JDC | | |
| 1 | Proliant 1600 256 MB | 5-18GB | Madge PCI t/r NetEligent 10/100 | NT 4.0 SP4 | Physical Development Server Apple Valley | | |

FINAL

| Qty | Manufacturer, Model, CPU and Memory | Storage and Peripherals | Network/Remote Connectivity and Protocols | Operating System and Web Browser | Description and Location | Statistics (Concurrent Users, Utilization, etc.) | Maintenance Provider and Cost |
|-----|-------------------------------------|---|--|----------------------------------|---|--|-------------------------------|
| 1 | Proliant 1600R 256 MB | 18GB | NE 3123 100 Mbps Netelligent 10/100 | NT 4.0 SP4 | SDM Server (SSIS) Hastings JDC | | |
| 1 | Proliant 3000 256 MB | 2-9GB Disk Drives 5 DLT, 70GB 2 DLT 10/20 1 DLT 20/40 Tape Drives | 2 - Netelligent 10/100 Madge PCI T/R | NT 4.0 SP4 | Backup Server Hastings JDC | | |
| 1 | Proliant 1600 132 MB | External 3-9 GB RAID | 2 - Netelligent 10/100 | NT 4.0 SP4 | CareFacts Server Hastings JDC | | |
| 1 | Proliant 800 160 MB | External 3-4GB 7200 raidflex SD DGR Raidcard | Madge PCI t/r | NT 4.0 SP4 | SQL Server Norwest Building | | |
| 1 | Prosignia 300 64 MB | 1-4GB | Madge PCI t/r | NT 4.0 SP4 | Norwest Building | | |
| 1 | Sun UltraSparc 10 256 MB | 1-8GB 1-4GB | 10/100 Ethernet | | Openview Hastings JDC | | |
| 1 | Proliant 800 144 MB | 2-4GB Mirrored | NE 3123 100 Mbps | NT 4.0 SP3 | Rtr/sw perform Hastings JDC | | |
| 1 | Proliant 800 512 MB | 3-9GB 7200 Raid Ultra GDR Raidcard | Netelligent 10/100 | NT 4.0 SP4 | 3 rd party SQL 7 test Hastings JDC | | |
| 1 | Proliant 800 416 MB | 3-9GB 7200 raidflex SD DGR raidcard | 3com fast EtherLink 10/100 | NT 4.0 SP4 | Intranet Server Hastings JDC | | |
| 1 | Proliant 2000 128 MB | 2-1GB | Madge 16/4 t/r EISA | NT 4.0 SP4 | DHCP Server Hastings JDC | | |

FINAL

| Qty | Manufacturer, Model, CPU and Memory | Storage and Peripherals | Network/Remote Connectivity and Protocols | Operating System and Web Browser | Description and Location | Statistics (Concurrent Users, Utilization, etc.) | Maintenance Provider and Cost |
|-----|-------------------------------------|------------------------------------|---|----------------------------------|---|--|-------------------------------|
| 1 | Proliant 1600R 320 MB | 2-18GB | Netelligent 10/100 NE 3123 100 Mbps | NT 4.0 SP4 | Outlook Web Server Hastings JDC | | |
| 1 | Proliant 1600R 320 MB | 2-18GB | Netelligent 10/100 | NT 4.0 SP4 | Clientele Hastings JDC | | |
| 1 | Proliant 1600 328 MB | 1-9GB | Netelligent 10/100 | NT 4.0 SP4 | Primary Domain Comtroller Hastings JDC | | |
| 1 | Proliant 1600 328 MB | 3-9GB | Netelligent 10/100 | NT 4.0 SP4 | Network Monitor Hastings JDS | | |
| 1 | Proliant 1600 160 MB | 3-9GB 7200 RAID DGR raidcard | Madge PCI T/R | NT 4.0 SP3 | Recorders Optical Server Hastings, JDC | | |
| 1 | IBM Netfinity 8660-42U 512 MB | | Madge PCI IBM T/R LanStreamer | NT 4.0 | SSIS Server Hastings JDC | | |
| 1 | Dell Poweredge 2400 | | | NT 4.0 | Sheriff Comm Server CJDN Hastings JDC | | |
| 1 | Proliant 800 512 MB ECC | 1-4GB | Madge PCI t/r Intel 10/100 PCI | NT 4.0 SP4 | Backup Server WSC | | |
| 1 | Proliant 1600R 196MB | 1-18GB | Intel 10/100 Pro+ | NT 4.0/SP4 | External Website Server 1 Hastings, JDC | | |
| 1 | Proliant 1600R 196MB | 2-18GB raid | Intel 10/100 Pro+ | NT 4.0/SP4 | Eternal Website Server 2 Hastings, JDC | | |
| 1 | Proliant 1600 327MB | External 2-16GB Raid | Netelligent 10/100 NE 3123 100 Mbps | NT 4.0/SP4 | Programmers' SQL 7 Test | | |

FINAL

| Qty | Manufacturer, Model, CPU and Memory | Storage and Peripherals | Network/Remote Connectivity and Protocols | Operating System and Web Browser | Description and Location | Statistics (Concurrent Users, Utilization, etc.) | Maintenance Provider and Cost |
|-----|-------------------------------------|---|---|----------------------------------|---------------------------------------|--|-------------------------------|
| 1 | Proliant 1850R 589MB | 1-9GB 5-18GB FC-AL Adapter | Netelligent 10/100 | NT 4.0/SP4 | Exchange Mail 1 Hastings, JDC | | |
| 1 | Proliant 1850R 589MB | Shared RAID w/EXCH-NT1) FC-AL Adapter | Netelligent 10/100 | NT 4.0/SP4 | Exchange Mail 2 Hastings, JDC | | |
| 1 | IBM 5500 8660- 52U 512MB | 5-9GB | NE3123 100 Mbps | NT 4.0/SP4 | Test SSIS Server Hastings, JDC | | |
| 1 | Proliant 1600R 384MB | 3-18GB NT RAID 5 | NE 3123 100 Mbps Netelligent 10/100 | NT 4.0/SP4 | EW CSTSNT Server Hastings, JDC | | |
| 1 | Proliant 1600R 266MB | 2-18GB | NE 3123 100 Mbps Netelligent 10/100 | | NT FTP Server Hastings, JDC | | |
| 1 | IBM 7060-H30 1GB | 30 – (9395-B23) 340GB Total | 2 – PCI Ethernet | OS/390 2.6 | Main Frame Hastings, JDC | | |
| 1 | Cisco MCS 7820 | | | NT 4.0/SP4 | Voice over IP Hastings, JDC | | |
| 1 | Proliant ML570 1GB | 3-18gb Smart 4000 Array PCI | | W2K Adv Server | Prod 7 SQL Server Hastings, JDC | | |
| 1 | Proliant 800 96MB | 1-4GB | NE3123 100 MBps Madge TR 16/4 MB | NT 4.0/SP6a | Temp SNA Server Hastings, JDC | | |
| 1 | Proliant ML 530 | 4-18GB | 2 - NE3123 100Mbps | NT 4.0/SP6a | GIS App. Server WSC | | |
| 1 | Proliant ML530 1GB | 3-18GB | NE 3123 100Mbps | NT 4.0/SP6a | PDC, SMS Hastings, JDC | | |

FINAL

Wide Area Network Profiles

The wide area network (WAN) provides the network connection between geographic sites. WAN components include routers, bridges, gateways, hubs, switches, channel service units/digital service units (CSU/DSU), packet frame relay assembler and disassembler (PADs/FRADs), multiplexers/inverse multiplexers and other components. However, this is not a complete inventory of all WAN components in the criminal justice agencies in Dakota County.

| Component Location | Component Type, Manufacturer and Model | Qty | Software/Firmware and Versions | Circuit Type, Speed and Protocols | Number of Users or Devices Supported | Maintenance Provider and Cost |
|---------------------------|--|-----|--------------------------------|--|--|--|
| City of Eagan | | | | | | |
| Eagan Police Department | Cisco 3600 Router | 1 | Cisco IOS 11.1 | Frame Relay T1 to LOGIS and second T1, TCP/IP to the State of MN | 100 Mb/s switched network with 1 Gb/s backbone between buildings | State of Minnesota LOGIS and Internal IT staff |
| City of Burnsville | | | | | | |
| City Hall | Cisco 3640 Router | 2 | Cisco IOS 12.1 | PTP T1, Frame Relay, v.35, TCP/IP EIGRP | 250 – 100 Mb/s Ethernet devices | Internal support staff |
| City Hall | Cisco Ubr924 Router/cable modem | 1 | Cisco IOS 12.1 | 10Mb/s Broadband Ethernet, TCPIP, EIGRP, VPN | 1 10Mb/s router | Internal support staff |
| City Hall | MUX, CSU/DSU Astrocom 6546 | 1 | V3.5 | V.35, T1 TCPIP, Voice | 200 | Internal support Staff |
| Ice Center | Cisco 2620 Router | 1 | Cisco IOS 12.1 | 10Mb/s broadband Ethernet, Frame Relay, TCP/IP EIGRP | 8 – 100 Mb/s Ethernet devices | Internal support staff |

FINAL

| Component Location | Component Type, Manufacturer and Model | Qty | Software/Firmware and Versions | Circuit Type, Speed and Protocols | Number of Users or Devices Supported | Maintenance Provider and Cost |
|------------------------|--|-----|--------------------------------|---|--------------------------------------|-------------------------------|
| Ice Center | Cisco Ubr924 Router/cable modem | 1 | Cisco IOS 12.1 | 10Mb/s Broadband Ethernet, TCPIP, EIGRP, VPN | 1 10Mb/s router | Internal support staff |
| Public Access Facility | Cisco 2620 Router | 1 | Cisco IOS 12.1 | 256kb Frame Relay, TCPIP EIGRP | 20 – 100 Mb/s Ethernet devices | Internal support staff |
| Public Access Facility | Cisco Ubr924 Router/cable modem | 1 | Cisco IOS 12.1 | 10Mb/s Broadband Ethernet, TCPIP, EIGRP, VPN | 1 10Mb/s router | Internal support staff |
| Public Access Facility | Cisco Ubr7246 Headend Router/cable modem | 1 | Cisco IOS 12.1 | 10Mb/s Broadband Ethernet, TCPIP, EIGRP, RIPv2, VPN | 2000 users, 25 10Mb/s routers | Internal support staff |
| Youth Center | Cisco 2620 Router | 1 | Cisco IOS 12.1 | 10Mb/s broadband Ethernet, TCP/IP EIGRP | 8 – 100 Mb/s Ethernet devices | Internal support staff |
| Youth Center | Cisco Ubr924 Router/cable modem | 1 | Cisco IOS 12.1 | 10Mb/s Broadband Ethernet, TCPIP, EIGRP, VPN | 1 10Mb/s router | Internal support staff |
| Fire Station 1 | Cisco 1605 Router | 1 | Cisco IOS 12.1 | 10Mb/s broadband Ethernet, 256KB Frame Relay backup, TCP/IP EIGRP | 8 – 100 Mb/s Ethernet devices | Internal support staff |
| Fire Station 1 | Cisco Ubr924 Router/cable modem | 1 | Cisco IOS 12.1 | 10Mb/s Broadband Ethernet, TCPIP, EIGRP, VPN | 1 10Mb/s router | Internal support staff |
| Fire Station 2 | Cisco 1605 Router | 1 | Cisco IOS 12.1 | 10Mb/s broadband Ethernet, 128kb Frame Relay backup circuitry, TCP/IP EIGRP | 8 – 100 Mb/s Ethernet devices | Internal support staff |
| Fire Station 2 | Cisco Ubr924 Router/cable modem | 1 | Cisco IOS 12.1 | 10Mb/s Broadband Ethernet, TCPIP, EIGRP, VPN | 1 10Mb/s router | Internal support staff |
| Maintenance Facility | Cisco 2620 Router | 1 | Cisco IOS 12.1 | PTP T1, 10Mb/s Broadband Ethernet, v.35, TCP/IP EIGRP | 50 – 100 Mb/s Ethernet devices | Internal support staff |

FINAL

| Component Location | Component Type, Manufacturer and Model | Qty | Software/Firmware and Versions | Circuit Type, Speed and Protocols | Number of Users or Devices Supported | Maintenance Provider and Cost |
|--|--|-----|--------------------------------|--|--------------------------------------|--------------------------------------|
| Maintenance Facility | Cisco Ubr924 Router/cable modem | 1 | Cisco IOS 12.1 | 10Mb/s Broadband Ethernet, TCPIP, EIGRP, VPN | 1 10Mb/s router | Internal support staff |
| Maintenance Facility | MUX, CSU/DSU Astrocom 6546 | 1 | V3.5 | V.35, T1 TCPIP, Voice | 200 | Internal support Staff |
| Police Substation at Burnsville Center | Cisco 607 DSL router | 1 | Cisco IOS 12.0 | 256kb DSL, TCP/IP, VPN | 2 – 100 Mb/s Ethernet devices | Internal support staff |
| Dakota County Sheriff's Department (see Dakota County IT) | | | | | | |
| Gov't Services Complex | | 1 | | Frame Relay 3270 SNA | | |
| Dakota County Attorney (see Dakota County IT) | | | | | | |
| Dakota County Public Defender | | | | | | |
| Public Defenders Office | | 1 | | Frame Relay 56Kb/s IP | | |
| First District Court | | | | | | |
| Apple Valley Hastings | Cisco 4500 Router | 1 | | ¼ T1 Line, TCP/IP | | MNET |
| Apple Valley Hastings | Cisco 4500 Router | 1 | | ¼ T1 Line, TCP/IP | | MNET |
| South St. Paul | DSL Modem (from Qwest) | 1 | | DSL, TCP/IP, | | MNET (support), Supreme Court (Cost) |

FINAL

| Component Location | Component Type, Manufacturer and Model | Qty | Software/Firmware and Versions | Circuit Type, Speed and Protocols | Number of Users or Devices Supported | Maintenance Provider and Cost |
|-----------------------------------|--|-----|--------------------------------|---|--|-------------------------------|
| Dakota County IT | | | | | | |
| Government Services Complex (GSC) | Cisco 4000 Router | 1 | | Three P-P T1 Line, TCP/IP From GSC to MNET One X.25 Line, TCP/IP From GSC to Courts | All County Employees Courts Employees | InterTech (MNET) |
| Government Services Complex | Cisco 7206 Router | 1 | | One P-P T1 Line, TCP/IP From GSC to NSC Two P-P T1 Line, TCP/IP From GSC to WSC One P-P ½ T1 Line, TCP/IP From GSC to Parks | All Northern Service Center Employees All Western Service Center Employees All Parks Employees at Hastings | |
| Western Service Center (WSC) | Cisco 7206 Router | 1 | | One P-P T1 Line, TCP/IP From WSC to NSC Two P-P T1 Line, TCP/IP From WSC to GSC One P-P T1 Line, TCP/IP From WSC to Farmington One P-P T1 Line, TCP/IP From WSC to Cedar Ridge | All Northern Service Center Employees All Western Service Center Employees All Farmington Employees All Cedar Ridge Employees | |
| Extension - Farmington | Cisco 2620 Router | 1 | | One P-P T1 Line, TCP/IP From Farmington to WSC | All Farmington Employees | |
| Cedar Ridge – Apple Valley | Cisco 2620 Router | 1 | | One P-P T1 Line, TCP/IP From Cedar Ridge to WSC | All WSC Employees | |

FINAL

| Component Location | Component Type, Manufacturer and Model | Qty | Software/Firmware and Versions | Circuit Type, Speed and Protocols | Number of Users or Devices Supported | Maintenance Provider and Cost |
|-----------------------------------|--|-----|--------------------------------|--|--|-------------------------------|
| Parks - Hastings | Cisco 2502 Router | 1 | | One P-P ½ T1 Line, TCP/IP From Parks to WSC | All Parks Employees at Hastings | |
| W. St Paul (WSP) Marie Ave. | Cisco 2502 Router | 1 | | One P-P T1 Line, TCP/IP From WSP to NSC | All WSP Employees | |
| S. St Paul (SSP) Norwest Building | Cisco 4000 Router | 1 | | One P-P T1 Line, TCP/IP From SSP to NSC | All SSP Employees | |
| Northern Service Center (NSC) | Cisco 7206 Router | 1 | | One P-P T1 Line, TCP/IP From NSC to SSP One P-P T1 Line, TCP/IP From NSC to GSC One P-P T1 Line, TCP/IP From NSC to WSC One P-P T1 Line, TCP/IP From NSC to WSP | All SSP Employees (Norwest Building) All GSC Employees (Hastings) All WSC Employees (Apple Valley) All WSP Employees (Marie Ave.) | |

FINAL

Local Area Network Profiles for Dakota County

The local area network (LAN) provides the network connections within a geographic site. LAN components include hubs, switches, routers, gateways and other components. However, this is not a complete inventory of all LAN components in the criminal justice agencies in Dakota County.

| Component Location | Component Type, Manufacturer and Model | Qty | Software/Firmware and Versions | LAN Topology, Backbone Topology and Protocols | Number of Users or Devices Supported | Maintenance Provider and Cost |
|---------------------------|--|-----|--------------------------------|--|--------------------------------------|------------------------------------|
| City of Eagan | | | | | | |
| Switches | Intel 510 Switches | 2 | VLAN | 100 Mb/s switched network with 1 Gb/s backbone between Police and City Hall, TCPIP, IPX, SPX | Connect Police and City Hall | Internal support staff - and LOGIS |
| Hubs | HP 10Mb/s | 4 | | Printer Connections | | |
| Hubs | Intel 100 Mb/s and 10/100 Mb/s | 20 | | Data Connections in all buildings | | |
| City of Burnsville | | | | | | |
| City Hall, IT Center | Cisco 3640 Router | 2 | Cisco IOS 12.1 | 100 Mb/s Switched Ethernet, 1 Gb/s Ethernet Fiber backbone, TCP/IP, VLAN trunking | 250 – 100 Mb/s Ethernet devices | Internal support staff |
| City Hall, IT Center | Cisco Catalyst 3508 Switch | 1 | Cisco IOS 12.01 | 1 Gb/s Ethernet Fiber backbone, TCP/IP, VLAN trunking | 250 – 100 Mb/s Ethernet devices | Internal support staff |

FINAL

| Component Location | Component Type, Manufacturer and Model | Qty | Software/Firmware and Versions | LAN Topology, Backbone Topology and Protocols | Number of Users or Devices Supported | Maintenance Provider and Cost |
|--|--|-----|--------------------------------|---|--------------------------------------|-------------------------------|
| City Hall, IT Center, Police, Admin, Inspections | Cisco Catalyst 3548 Switch | 4 | Cisco IOS 12.01 | 100 Mb/s Switched Ethernet, 1 Gb/s Ethernet Fiber backbone, TCP/IP, VLAN trunking | 250 – 100 Mb/s Ethernet devices | Internal support staff |
| City Hall, IT Center, Police, Admin, Inspections | Cisco Catalyst 2924 10/100 Mb/s Switch | 6 | Cisco IOS 12.01 | 100 Mb/s Switched Ethernet, 1 Gb/s Ethernet Fiber backbone, TCP/IP, VLAN trunking | 250 – 100 Mb/s Ethernet devices | Internal support staff |
| Fire Station 1 | Synoptic 810M Hub | 1 | V3x | 10Mb/s Hub, TCP/IP | 8 users 8 devices | Internal support staff |
| Fire Station 1 | Cisco 1605 Router | 1 | Cisco IOS 12.1 | 10Mb/s broadband Ethernet, 256KB Frame Relay backup, TCP/IP EIGRP | 8 – 100 Mb/s Ethernet devices | Internal support staff |
| Fire Station II | Synoptic 810M Hub | 1 | V3x | 10Mb/s Hub TCP/IP | 8 users 8 devices | Internal support staff |
| Fire Station 1 | Cisco 1605 Router | 1 | Cisco IOS 12.1 | 10Mb/s broadband Ethernet, 256KB Frame Relay backup, TCP/IP EIGRP | 8 – 100 Mb/s Ethernet devices | Internal support staff |
| Ice Center | Cisco 2620 Router | 1 | Cisco IOS 12.1 | 10Mb/s to a 100Mb/s Switched Ethernet Backbone, TCP/IP EIGRP | 8 – 100 Mb/s Ethernet devices | Internal support staff |
| Ice Center | Cisco Catalyst 2924 10/100 Mb/s Switch | 1 | Cisco IOS 12.01 | 100 Mb/s Switched Ethernet, backbone, TCP/IP, VLAN trunking | 8 – 100 Mb/s Ethernet devices | Internal support staff |
| Maintenance Facility | Cisco Catalyst 2924 10/100 Mb/s Switch | 1 | Cisco IOS 12.01 | 100 Mb/s Switched Ethernet, backbone, TCP/IP, VLAN trunking | 50 – 100 Mb/s Ethernet devices | Internal support staff |
| Maintenance Facility | Cisco 2620 Router | 1 | Cisco IOS 12.1 | 10Mb/s to a 100Mb/s Switched Ethernet Backbone, TCP/IP EIGRP | 50 – 100 Mb/s Ethernet devices | Internal support staff |
| Public Access Facility | Cisco 2620 Router | 1 | Cisco IOS 12.1 | 10Mb/s to a 100Mb/s Switched Ethernet Backbone, TCP/IP EIGRP | 20 – 100 Mb/s Ethernet devices | Internal support staff |

FINAL

| Component Location | Component Type, Manufacturer and Model | Qty | Software/Firmware and Versions | LAN Topology, Backbone Topology and Protocols | Number of Users or Devices Supported | Maintenance Provider and Cost |
|--|--|-----|--------------------------------|--|--|-------------------------------|
| Public Access Facility | Cisco Catalyst 2924 10/100 Mb/s Switch | 1 | Cisco IOS 12.01 | 100 Mb/s Switched Ethernet, backbone, TCP/IP, VLAN trunking | 20 – 100 Mb/s Ethernet devices | Internal support staff |
| Public Access Facility | Cisco Ubr7246 Headend Router/cable modem | 1 | Cisco IOS 12.1 | 10Mb/s Broadband Ethernet, TCPIP, EIGRP, RIPv2, VPN | 2000 users, 25 10Mb/s routers | Internal support staff |
| Youth Center | Cisco 2620 Router | 1 | Cisco IOS 12.1 | 10Mb/s to a 100Mb/s Switched Ethernet Backbone, TCP/IP EIGRP | 8 – 100 Mb/s Ethernet devices | Internal support staff |
| Youth Center | Cisco Catalyst 2924 10/100 Mb/s Switch | 1 | Cisco IOS 12.01 | 100 Mb/s Switched Ethernet, backbone, TCP/IP, VLAN trunking | 8 – 100 Mb/s Ethernet devices | Internal support staff |
| Dakota County Sheriff's Department (see Dakota County IT) | | | | | | |
| Dakota County Attorney (see Dakota County IT) | | | | | | |
| Dakota County IT | | | | | | |
| Government Services Complex | Cisco Catalyst 5509 Switch | 1 | | 16 Mb/s Switched Token Ring, backbone, TCP/IP & IPX | 16 Mb/s Token Ring devices | Internal support staff |
| Government Services Complex | 16 Mb/s Token Ring Hub | 5 | | 16 Mb/s Token Ring TCP/IP & IPX | 16 Mb/s Token Ring devices | Internal support staff |
| Government Services Complex | Cisco 7206 Router | 1 | | 4 - 10 Mb/s Switched Ethernet, TCP/IP & IPX 2 - 16 Mb/s Switched Token Ring, TCP/IP & IPX | 10 Mb/s Ethernet devices 16 Mb/s Token Ring devices | Internal support staff |

FINAL

| Component Location | Component Type, Manufacturer and Model | Qty | Software/Firmware and Versions | LAN Topology, Backbone Topology and Protocols | Number of Users or Devices Supported | Maintenance Provider and Cost |
|-----------------------------|--|-----|--------------------------------|---|--|-------------------------------|
| Government Services Complex | Cisco 4000 Router | 1 | | 3 - 10 Mb/s Switched Ethernet, TCP/IP & IPX | 10 Mb/s Ethernet devices | Internal support staff |
| Western Service Center | Cisco Catalyst 5505 Switch | 2 | | 4 - 10/100 Mb/s Switched Ethernet, backbone, TCP/IP & IPX | 10/100 Mb/s Ethernet devices | Internal support staff |
| Western Service Center | 16 Mb/s Token Ring Hub | 1 | | 16 Mb/s Token Ring TCP/IP & IPX | 16 Mb/s Token Ring devices | Internal support staff |
| Western Service Center | Cisco 7206 Router | 1 | | 1 - 16 Mb/s Switched Token Ring, TCP/IP & IPX | 16 Mb/s Token Ring devices | Internal support staff |
| Western Service Center | Cisco Catalyst 6509 Switch | 2 | | 5 – 10/100 Mb/s Switched Ethernet, backbone, TCP/IP & IPX 8 – 1Gb/s Switched Ethernet, Inter-Switch Link, TCP/IP & IPX | 10/100 Mb/s Ethernet devices Inter-Switch Links | Internal support staff |
| Western Service Center | Cisco Catalyst 3548XL Switch | 1 | | 4 - 10/100 Mb/s Switched Ethernet, backbone, TCP/IP & IPX | 10/100 Mb/s Ethernet devices | Internal support staff |
| Western Service Center | Cisco Catalyst 4006 Switch | 2 | | 4 - 10/100 Mb/s Switched Ethernet, backbone, TCP/IP & IPX | 10/100 Mb/s Ethernet devices | Internal support staff |
| Extension - Farmington | Cisco Catalyst 4003 Switch | 1 | | 3 - 10/100 Mb/s Switched Ethernet, backbone, TCP/IP & IPX | 10/100 Mb/s Ethernet devices | Internal support staff |
| Extension - Farmington | Cisco 2620 Router | 1 | | 1 - 10/100 Mb/s Ethernet, TCP/IP & IPX | 10/100 Mb/s Ethernet devices | Internal support staff |
| Parks - Hastings | Cisco 2502 Router | 1 | | 1 - 16 Mb/s Token Ring, TCP/IP & IPX | 16 Mb/s Token Ring devices | Internal support staff |
| Parks - Hastings | 16 Mb/s Token Ring Hub | 1 | | 16 Mb/s Token Ring, TCP/IP & IPX | 16 Mb/s Token Ring devices | Internal support staff |
| Marie Ave. | Cisco 2502 Router | 1 | | 1 - 16 Mb/s Token Ring, TCP/IP & IPX | 16 Mb/s Token Ring devices | Internal support staff |

FINAL

| Component Location | Component Type, Manufacturer and Model | Qty | Software/Firmware and Versions | LAN Topology, Backbone Topology and Protocols | Number of Users or Devices Supported | Maintenance Provider and Cost |
|-------------------------|--|-----|--------------------------------|---|--------------------------------------|-------------------------------|
| Marie Ave. | 16 Mb/s Token Ring Hub | 1 | | 16 Mb/s Token Ring, TCP/IP & IPX | 16 Mb/s Token Ring devices | Internal support staff |
| Norwest Building | 16 Mb/s Token Ring Hub | 3 | | 16 Mb/s Token Ring TCP/IP & IPX | 16 Mb/s Token Ring devices | Internal support staff |
| Norwest Building | Cisco Catalyst 2600 Switch | 1 | | 7 - 16 Mb/s Switched Token Ring, TCP/IP & IPX | 16 Mb/s Token Ring devices | Internal support staff |
| Norwest Building | Cisco 4000 Router | 1 | | 1 - 16 Mb/s Token Ring, TCP/IP & IPX | 16 Mb/s Token Ring devices | Internal support staff |
| Northern Service Center | Cisco 7206 Router | 1 | | 1 - 16 Mb/s Switched Token Ring, TCP/IP & IPX | 16 Mb/s Token Ring devices | Internal support staff |
| Northern Service Center | 16 Mb/s Token Ring Hub | 4 | | 16 Mb/s Token Ring TCP/IP & IPX | 16 Mb/s Token Ring devices | Internal support staff |
| Northern Service Center | Cisco Catalyst 2600 Switch | 1 | | 6 - 16 Mb/s Switched Token Ring, TCP/IP & IPX | 16 Mb/s Token Ring devices | Internal support staff |

FINAL

System and Network Management Profiles for Dakota County

The functions provided by system and network management tools include application management, network and system administration, automated storage management, network fault detection and performance monitoring. However, this is not a complete inventory of all system and network management tools in the criminal justice agencies in Dakota County.

| Tool Name, Vendor and Version | Licenses | Functions | Users and Location | Hardware, Operating System, Information Repository and Versions | Programming Language, Protocols and Component Interfaces | Maintenance Provider and Cost |
|-------------------------------------|----------|---|---------------------|--|--|---|
| City of Eagan | | | | | | |
| HP Open View | | Node Manager | LOGIS | NT Server performs local area management and monitoring | | LOGIS and HP |
| CiscoWorks | | Manages the local area network (LAN) Provides wide area network (WAN) monitoring, traffic management and access control. | LOGIS | NT Server | | LOGIS and Cisco |
| City of Burnsville | | | | | | |
| BMC PATROL for Microsoft Windows NT | 26 | Application mgmt Capacity and configuration mgmt Performance mgmt | IT Staff, City Hall | Compaq Proliant 800, Pentium Pro 200, 256 MB RAM, MS Windows NT 4.0 Server SP6a | | IT internal support, BMC Software Compaq |

FINAL

| Tool Name, Vendor and Version | Licenses | Functions | Users and Location | Hardware, Operating System, Information Repository and Versions | Programming Language, Protocols and Component Interfaces | Maintenance Provider and Cost |
|---|-----------------|---|---------------------------|--|---|--------------------------------------|
| Compaq Insight Manager Ver 4.90 | 26 | Server Management Performance mgmt Software distribution Server monitoring | IT Staff, City Hall | Compaq Proliant 800, Pentium Pro 200, 256 MB RAM, MS Windows NT 4.0 Server SP6a | APC interfaces, Web access, | Compaq and IT internal support |
| CiscoWorks2000 Server LAN Management Suite V3.x | 1 | Manages the local area network (LAN) Provides wide area network (WAN) monitoring, traffic management and access control. | IT Staff, City hall | Compaq Deskpro PIII 500 MHz, 384 MB RAM, SCSI drives, MS Windows NT 4.0 SP6a User interface – Intel Pentium PC Windows NT and either a Netscape or Microsoft browser | Java, html | IT internal support, Cisco Systems |
| ArcServe 6.61 | 26 | WAN/LAN storage management | IT staff, City Hall | 1 Compaq Proliant 1600, Dual PIII 600 server, Win NT 4.0 SP6a, 1 Compaq Proliant 1850R Dual PIII 450 Win NT 4.0 SP6a, with 2 8150 Cybernetic 15 tape autoloader libraries | | IT internal support |
| Dakota County Sheriff's Department (supported by Dakota County IT) | | | | | | |
| Dakota County Attorney (supported by Dakota County IT) | | | | | | |

FINAL

| Tool Name, Vendor and Version | Licenses | Functions | Users and Location | Hardware, Operating System, Information Repository and Versions | Programming Language, Protocols and Component Interfaces | Maintenance Provider and Cost |
|--|----------|--|--------------------|---|--|-------------------------------|
| Dakota County IT | | | | | | |
| HP Open View – to be implemented | | Node Manager | | Solaris UNIX Server performs local area management and monitoring | | |
| Cisco Works 2000 – to be implemented | | Manages the LAN and provides WAN monitoring, traffic mgmt and access control | | Solaris UNIX Server | | |
| Vertas Backup Exec Version 8.5 | | | | | | |
| Microsoft System Management Server Version 2.0 – to be implemented | | | | | | |
| Compaq Insight Manager – to be implemented | | | | | | |

FINAL

Security Management Profiles

The functions provided by security management tools include authentication, authorization, data integrity and intrusion detection. Authentication and authorization products include single sign-on software, directory services, digital certificates and firewalls. Data integrity products include hardware and software encryption. Audit products include intrusion detection and prevention. However, this is not a complete inventory of all security management tools in the criminal justice agencies in Dakota County.

| Tool Name, Vendor and Version | Licenses | Functions | Users and Location | Hardware, Operating System, Information Repository and Versions | Programming Language, Protocols and Component Interfaces | Maintenance Provider and Cost |
|-------------------------------|----------|-----------------------------------|---------------------------|---|--|-------------------------------|
| City of Eagan | | | | | | |
| CISCO PIX 5.15 | | Firewall management | Entire City | PIX | N/A | CISCO |
| Websense | | URL Filtering | LOGIS and Entire City | NT Server | | Websense |
| City of Burnsville | | | | | | |
| CISCO IP filtering IOS | | Security mgmt | All users, facilities | Cisco Routers on IOS 12.x or newer | TCPIP | CISCO, internal IT Support |
| Checkpoint FireWall | | Security mgmt | All users, facilities | Unix | TCPIP | State of MN dept. of ITG |
| Elron Internet Manager V. 5.1 | 250 | Web security mgmt, url filtering, | All users, all facilities | IBM PC 300PL PIII, 500 MHz, 384MB RAM MS Win NT 4.0 SP6a | TCPIP | Internal IT support |

FINAL

| Tool Name, Vendor and Version | Licenses | Functions | Users and Location | Hardware, Operating System, Information Repository and Versions | Programming Language, Protocols and Component Interfaces | Maintenance Provider and Cost | |
|--|-------------------------------|--|-----------------------------------|--|---|--------------------------------------|---------------------|
| Trend Micro Virus Control Suite V1.66 | Elron Internet Manager V. 5.1 | 250 | Web security mgmt, url filtering, | All users, all facilities | IBM PC 300PL PIII, 500 MHz, 384MB RAM MS Win NT 4.0 SP6a | TCPIP | Internal IT support |
| Dakota County Attorney (see Dakota County IT) | | | | | | | |
| Dakota County Sheriff's Department | | | | | | | |
| Norton AntiVirus | | Virus Screening | | NT | | Nortan | |
| Cisco Firewall (PIX 5.20) | | Maintains secure DMZ for exclusive use of Sheriff's Department LAN | | | | Cisco | |
| Dakota County IT | | | | | | | |
| Norton AntiVirus | | Virus Screening | | NT | | Nortan | |
| Cisco Firewall (PIX 5.20) | | | | Cisco | | Cisco | |

FINAL

External Services Profiles

External services include network carriers and service providers, communication carriers and service providers, application service providers, facilities management providers, equipment maintenance and support providers, application maintenance and support providers, information repository maintenance and support providers, and consultants and contractors providing specific services. However, this is not a complete inventory of all external services provided to the criminal justice agencies in Dakota County.

| Provider Name | Description of Service and Contractual Agreement | Cost |
|------------------------------|---|------|
| City of Eagan | | |
| CDPD AT&T | Mobile Computing Devises (MCD) wireless carrier | |
| QWEST | Frame Relay and dedicated circuit provider | |
| City of Burnsville | | |
| IBM | AS400 hardware/software support | |
| Vision Software, Inc | CAD/RMS/Mobile software support | |
| Qwest | Frame Relay and dedicated circuit provider | |
| Imageware, Inc | Digital Mugshot, hardware/software support | |
| New World Systems | AS400 financial application software support | |
| Mid America Business Systems | Document Imaging/Management hardware and software support | |
| E/S support Services | ENFORS software support | |
| Cisco Systems, Inc. | Router/Switch hardware and software support | |
| MN dept of Admin/ITG | Routed network services | |

FINAL

| Provider Name | Description of Service and Contractual Agreement | Cost |
|---|--|------|
| Dakota County Sheriff's Department | | |
| E/S support Services | ENFORS software support (local) | |
| MASYS | ENFORS software support (vendor support) | |
| Electrocom | MDT message switch support | |
| MN dept of Admin/ITG | Routed network services | |
| Imageware, Inc | Digital Mugshot, hardware/software support | |
| DBI | Digital Fingerprint hardware/software support | |
| State Board of Public Defense | Maintains LODB hardware/software | |
| Dakota County | | |
| Barr Engineering | CSTS application for Community Services | |

FINAL

Appendices: Technology Diagrams

Appendix A: Dakota County Wide Area Network

Appendix B: City of Burnsville Facilities included in the Wide Area Network (WAN) for 2000

Appendix C: City of Eagan:

City of Eagan Network Structure

City of Eagan Network Structure Future

City of Eagan City Hall

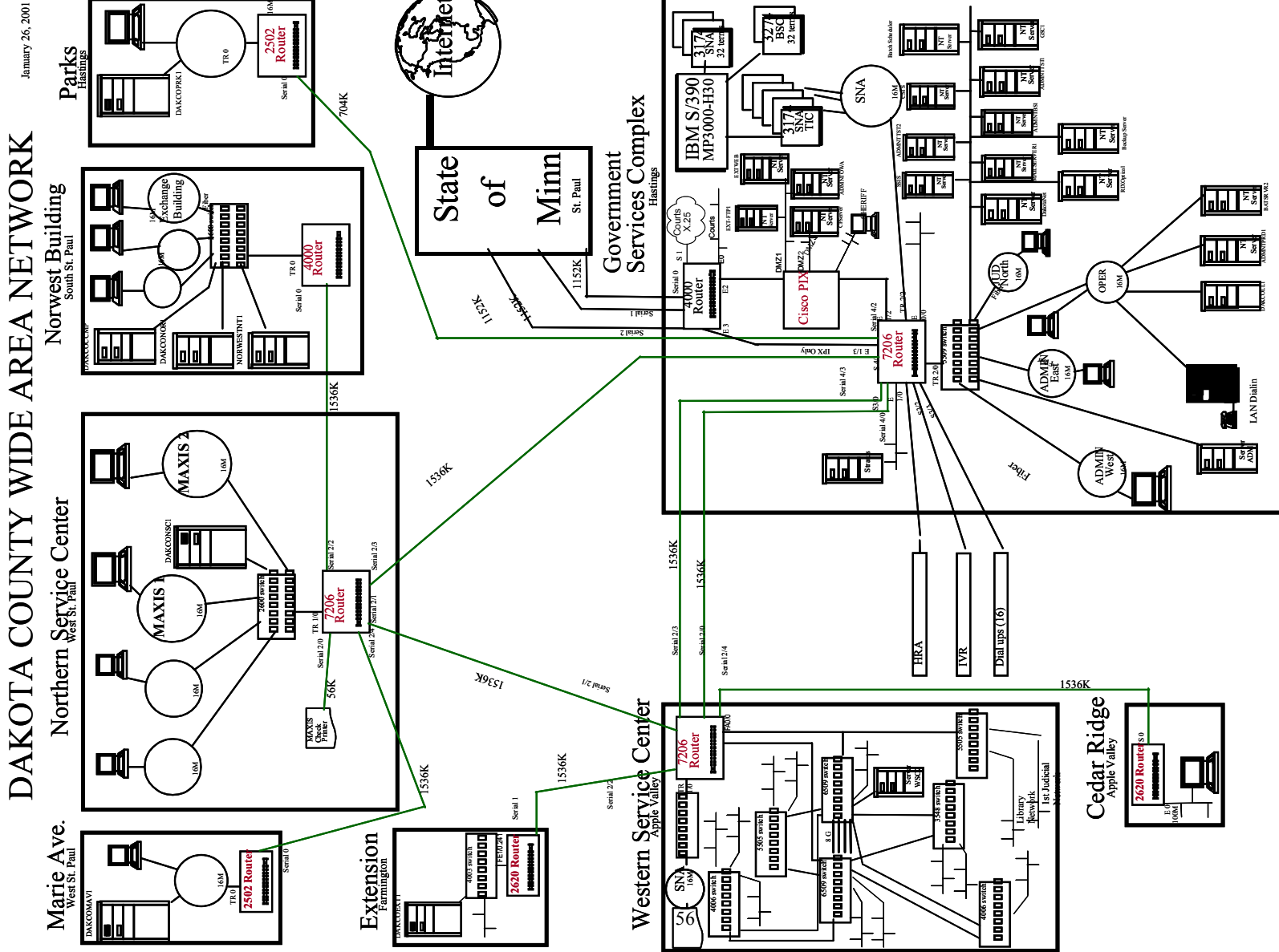
Eagan Police Department

Eagan Fire Administration

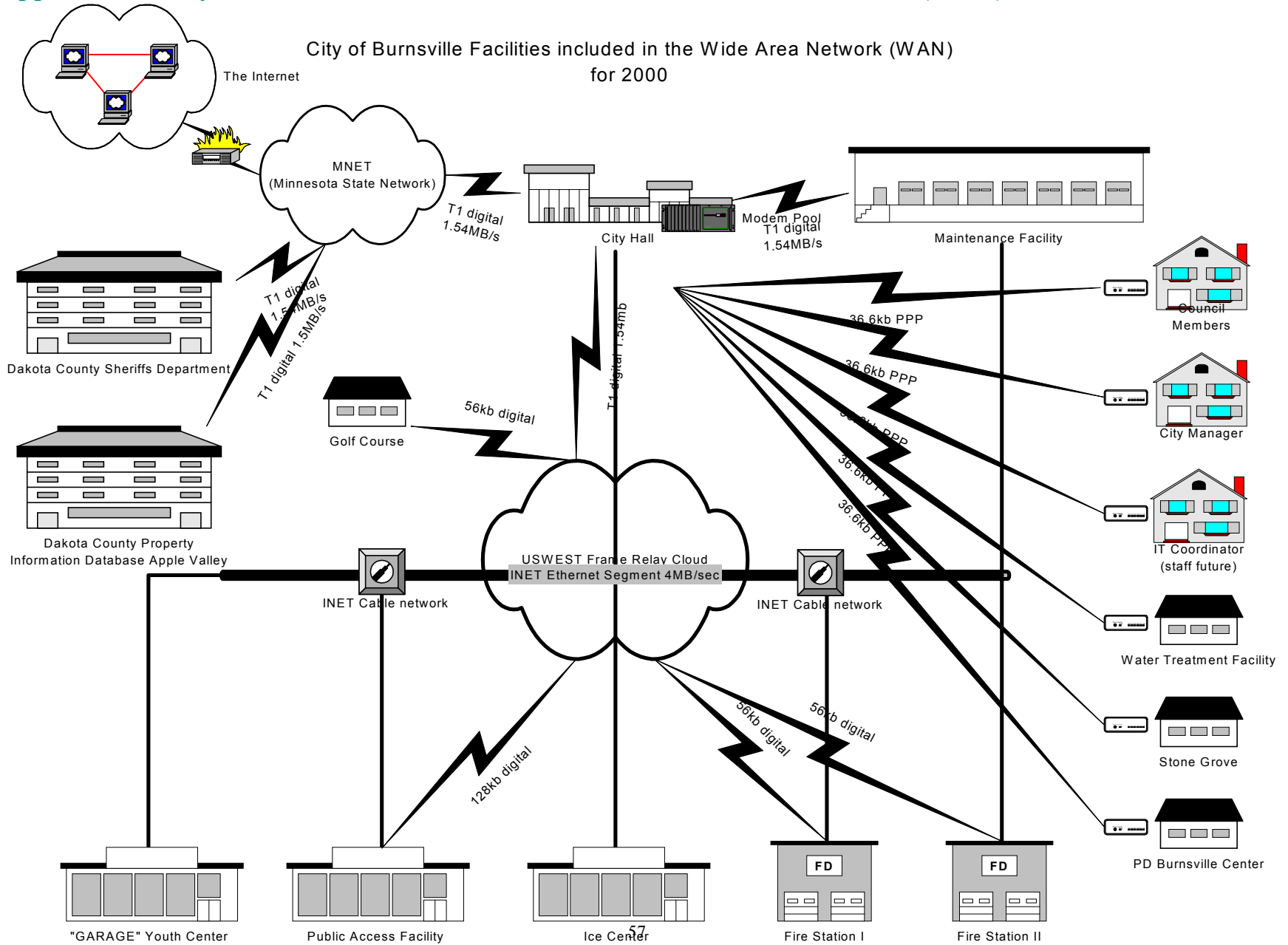
Eagan Maintenance

Eagan Civic Arena

Appendix A: Dakota County Wide Area Network



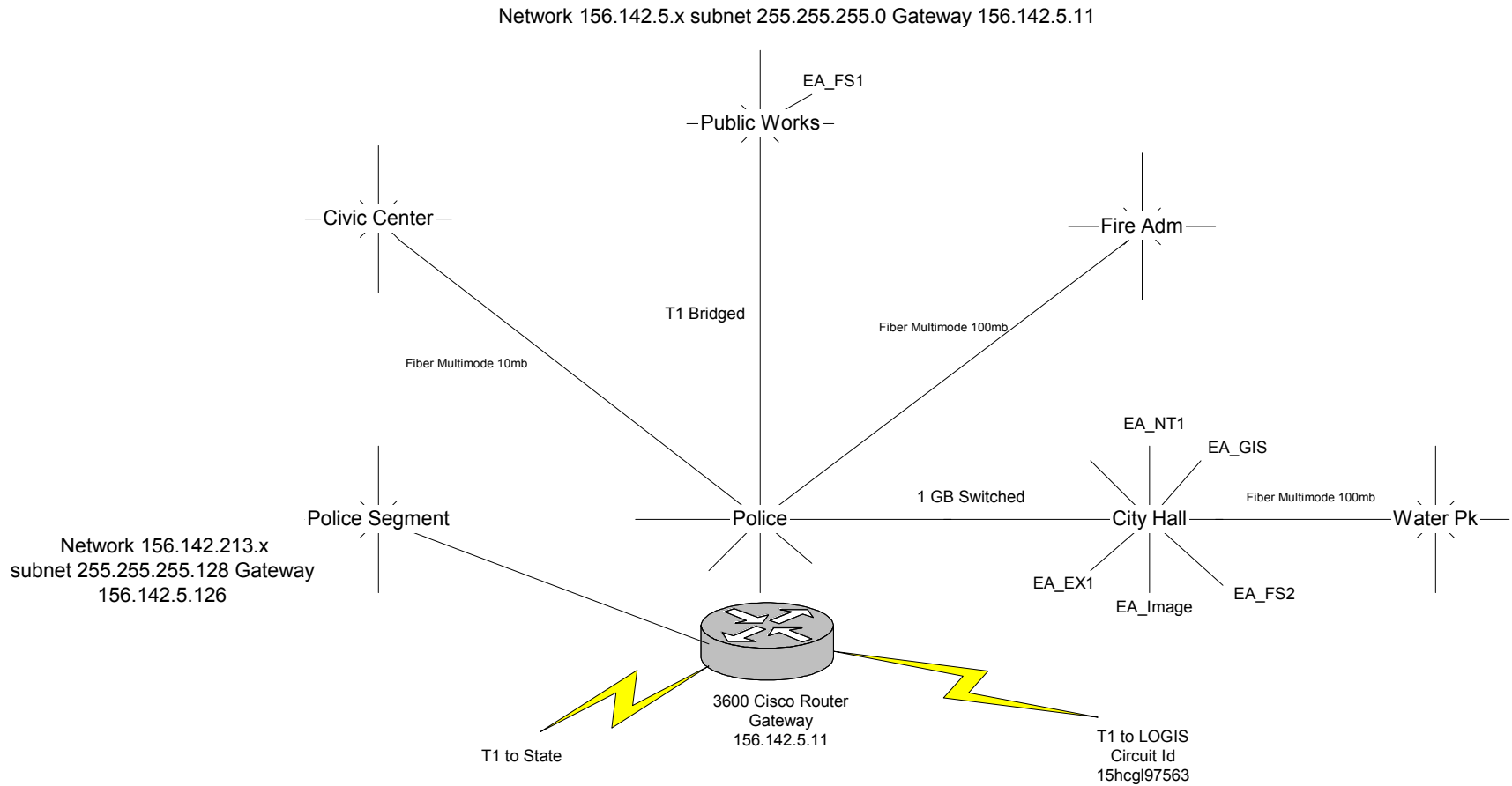
Appendix B: City of Burnsville Facilities included in the Wide Area Network (WAN) for 2000



Appendix C: City of Eagan:

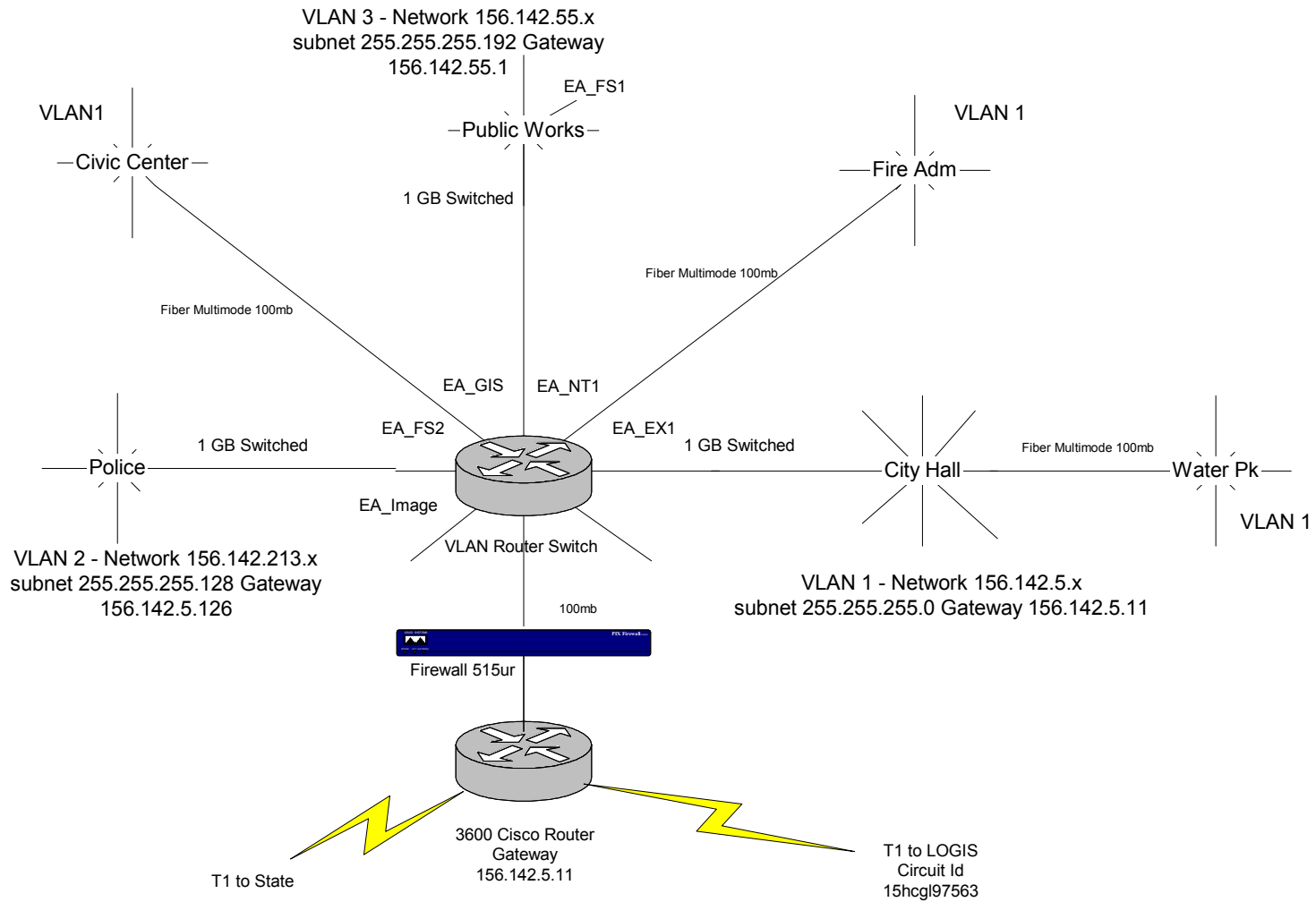
City of Eagan Network Structure

City of Eagan Network Structure



City of Eagan Network Structure Future

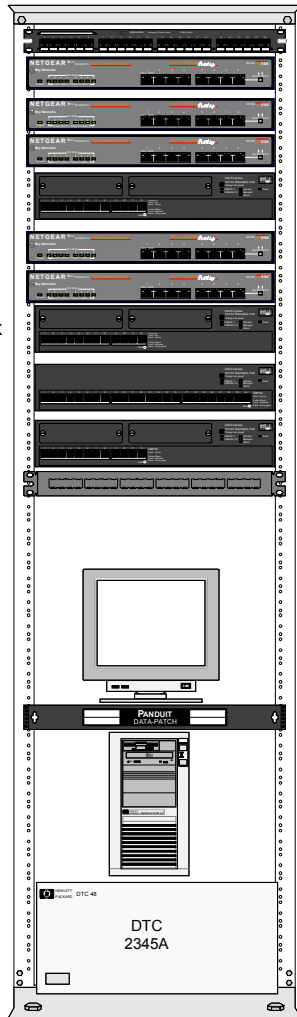
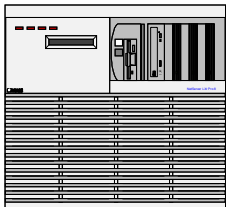
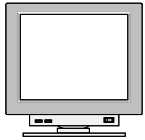
City of Eagan Network Structure Future
 Each server has a 100 mb duplexed line to each subnet



City of Eagan City Hall

- 24 port radio patch panel
- Intel 100T 12 port hub
- Intel 100T 12 port hub
- Intel 100T 12 port hub
- Intel 10/100T 12 port hub
- Intel 100T 12 port hub
- Intel 100T 12 port hub
- Intel 10/100 12 port hub EE110TX A0586701
- INTEL 220T 24 PORT HUB A05897018S/N
- Fiber Panel

HP Netserver LH4 dual processor EA_FS2 Novell 5.0 SN:94901333

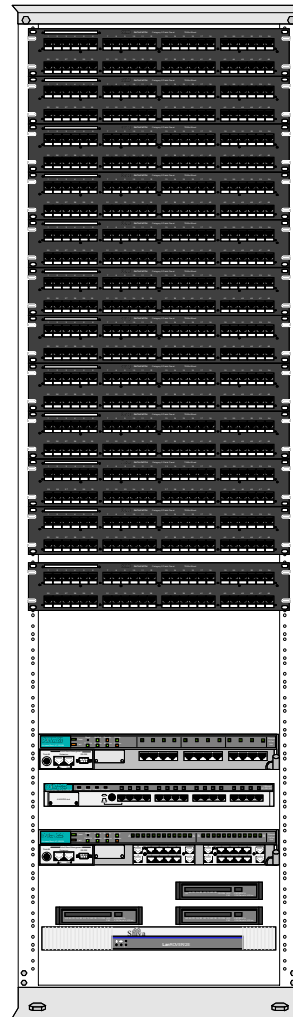


- (1)
- (2)
- (3)
- (4)
- (5)
- (6)
- (7)
- Intel 510T Switch sn: Z00514137
- (8)

Netserver 5/133LC EA_NT1

City Eagan City hall

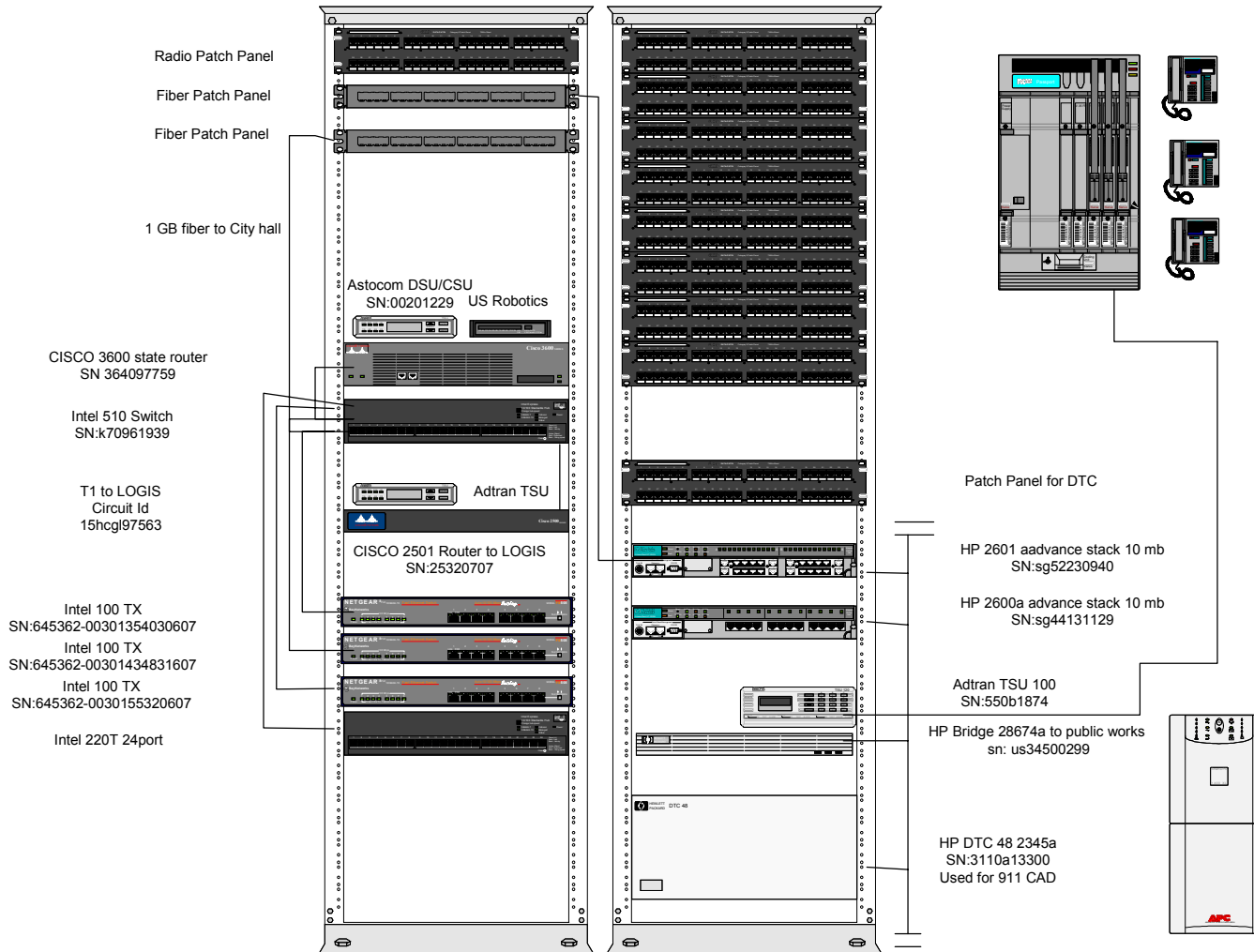
- 510 Switch
- Port 1 - Intel Hub (7)
- Port 2 - EA_NT1
- Port 3 - Intel hub (4)
- Port 9 - Intel hub (5)
- Port 10 - Intel hub (2)
- Port 12 - Intel hub (6)
- Port 13 - HP hub J2601b
- Port 14 - Intel Hub (3)
- Port 15 - HP hub J2600a
- Port 17 - Intel hub (8)
- Port 22 - Shiva
- Port 24 - HP hub J2611b



- HP J2600a SN sg62560735
- HP J2611B SN Sg71300784
- HP J2601b SN sg5502469
- Shiva modems
- Shiva Lan Rover4E

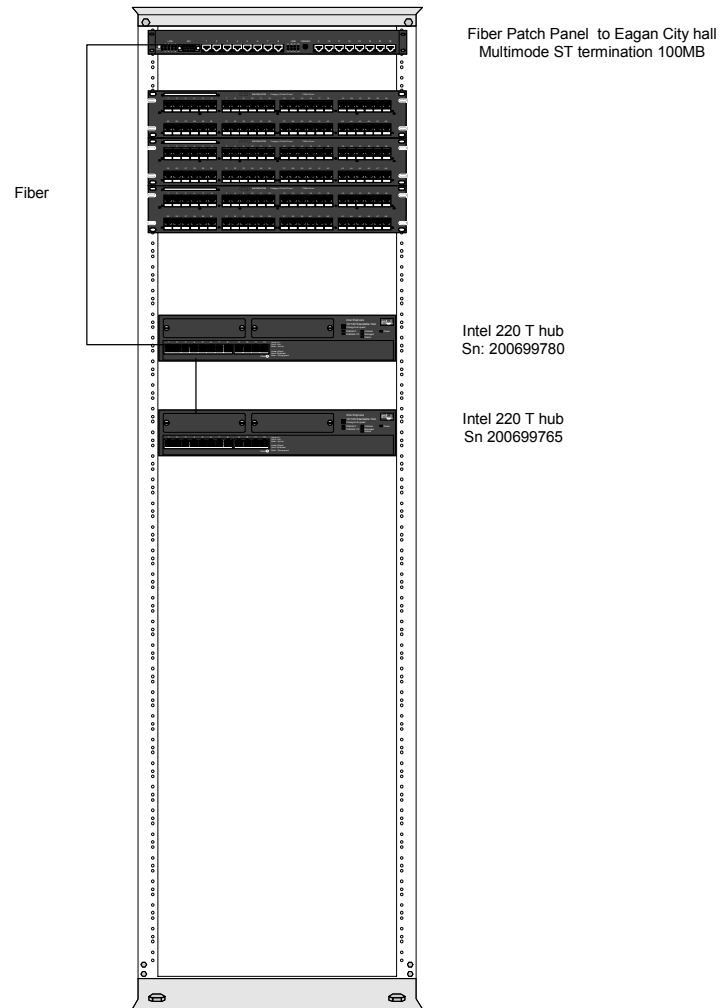
Eagan Police Department

Eagan Police Department



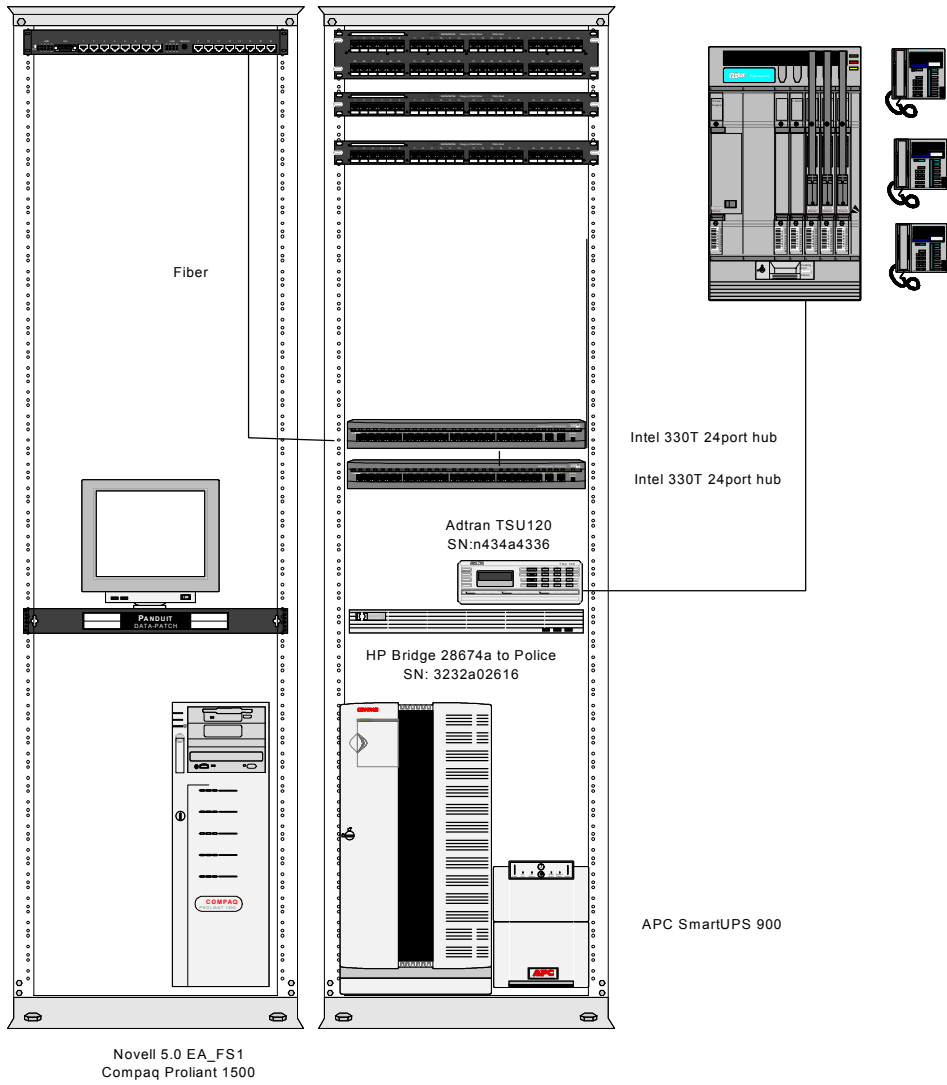
Eagan Fire Administration

Eagan Fire Administration



Eagan Maintenance

Eagan Maintenance



Eagan Civic Arena

Eagan Civic Arena

