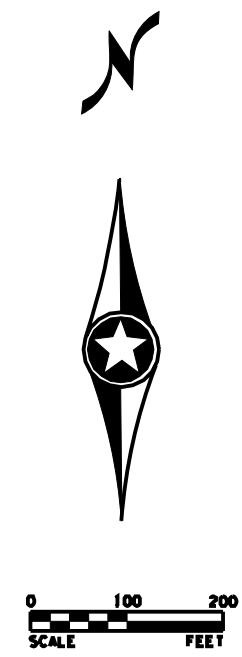
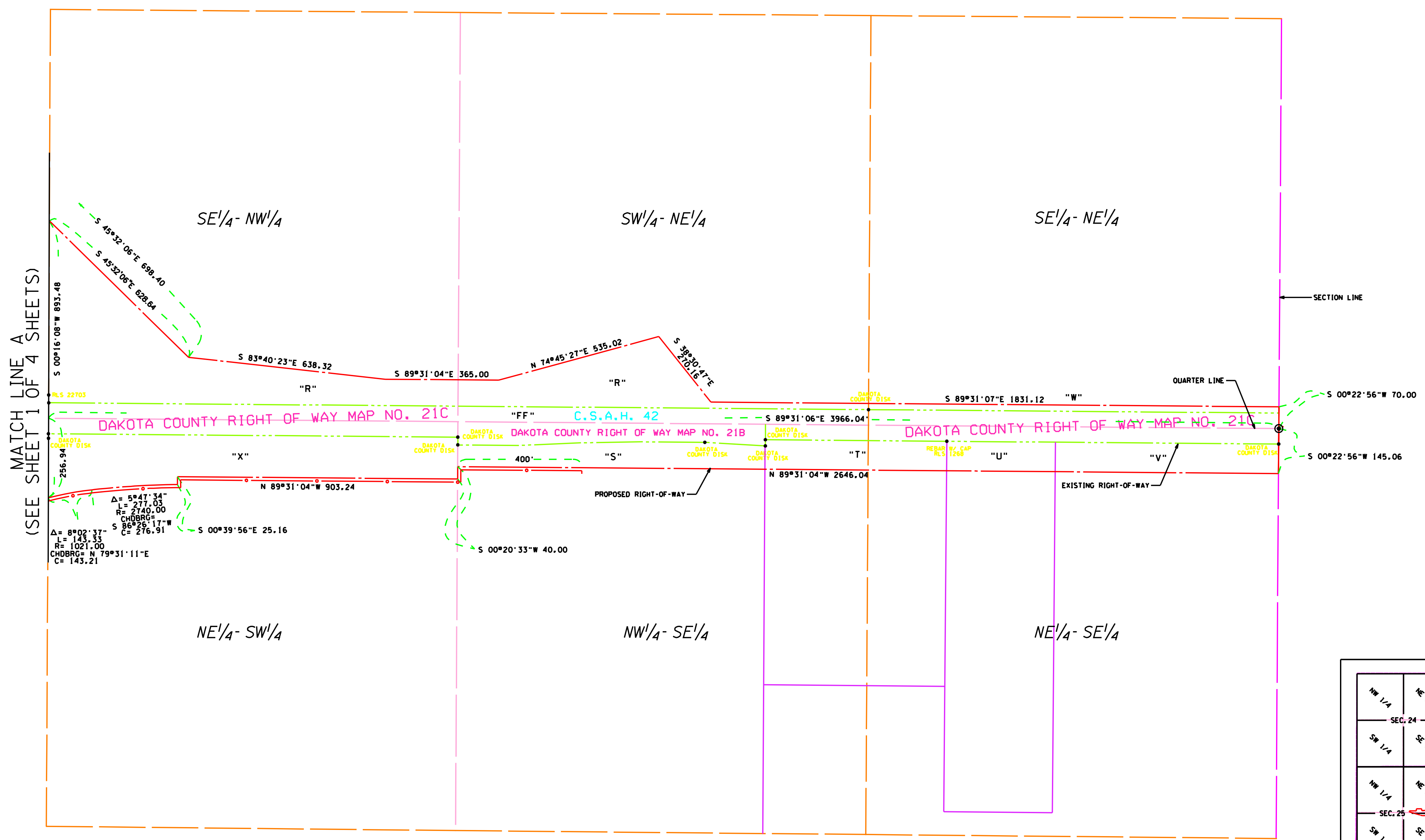


CITY OF ROSEMOUNT
 TH 52/CSAH 42
 OFFICIAL MAP OF
 PROPOSED RIGHT-OF-WAY

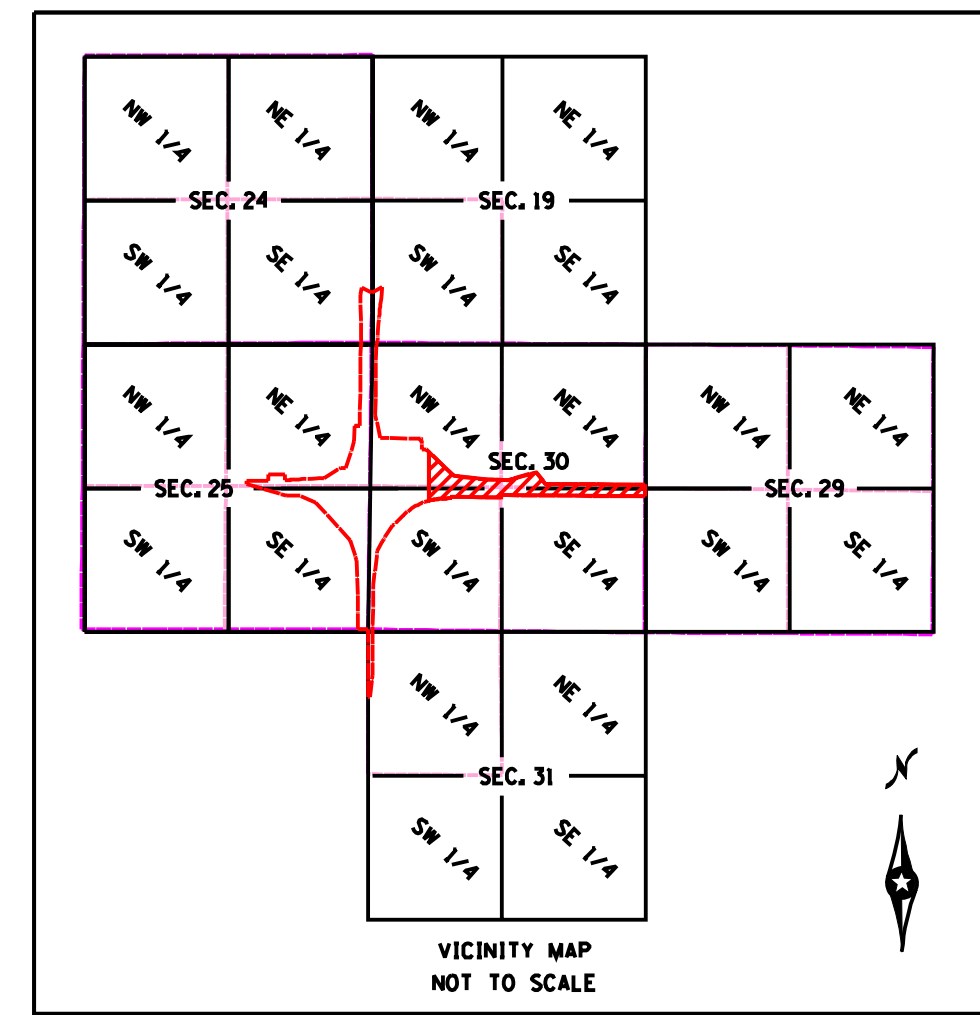


Bearing System is the Dakota County Coordinate System, NAD 83, (1996) Adjustment.
 All distances shown on map are measured in feet.

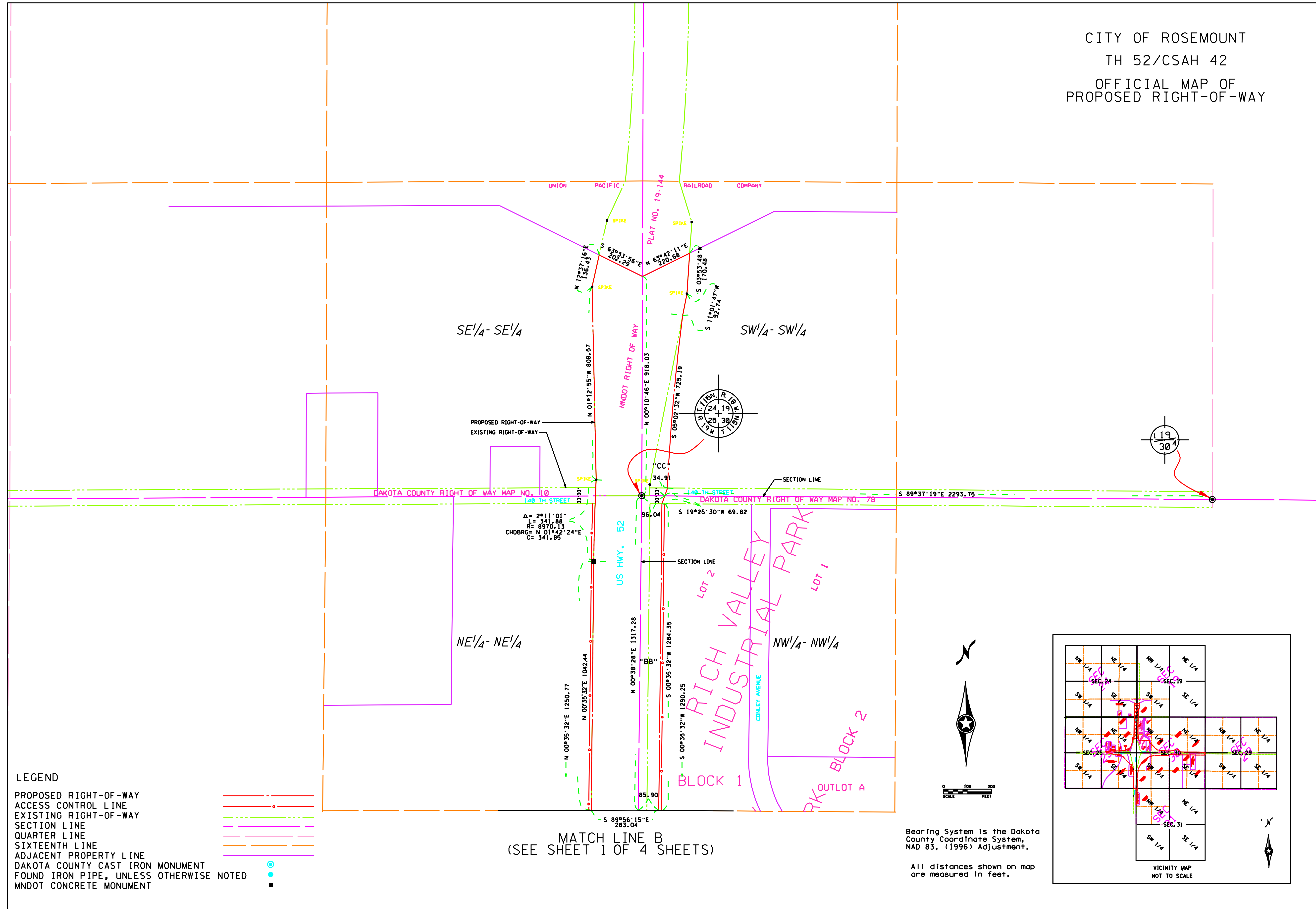


MATCH LINE A
(SEE SHEET 1 OF 4 SHEETS)

- LEGEND**
- PROPOSED RIGHT-OF-WAY — — — — —
 - ACCESS CONTROL LINE - - - - -
 - EXISTING RIGHT-OF-WAY - - - - -
 - SECTION LINE - - - - -
 - QUARTER LINE - - - - -
 - SIXTEENTH LINE - - - - -
 - ADJACENT PROPERTY LINE — — — — —
 - DAKOTA COUNTY CAST IRON MONUMENT ●
 - FOUND IRON PIPE, UNLESS OTHERWISE NOTED ●
 - MNDOT CONCRETE MONUMENT ■

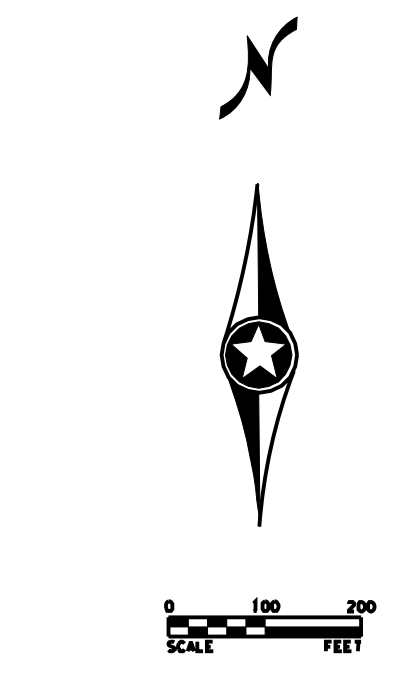


CITY OF ROSEMOUNT
 TH 52/CSAH 42
 OFFICIAL MAP OF
 PROPOSED RIGHT-OF-WAY

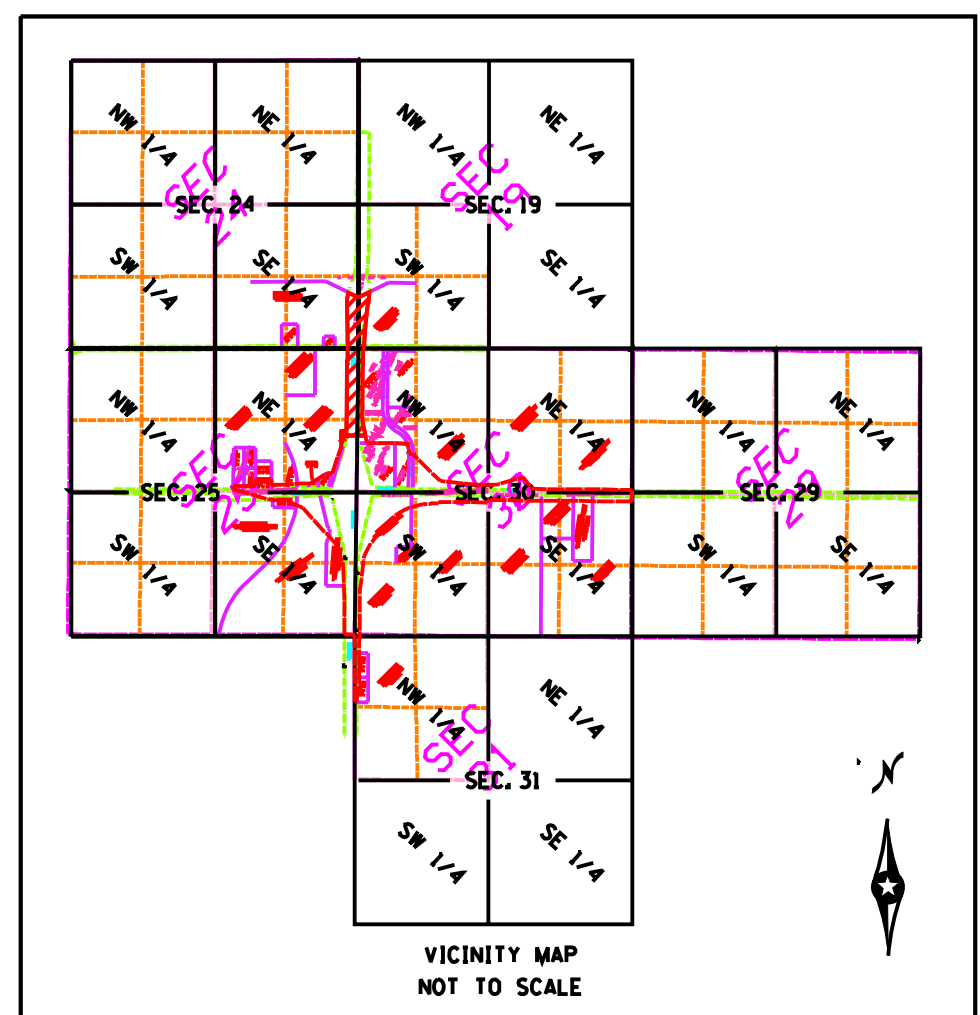


- LEGEND**
- PROPOSED RIGHT-OF-WAY
 - ACCESS CONTROL LINE
 - EXISTING RIGHT-OF-WAY
 - SECTION LINE
 - QUARTER LINE
 - SIXTEENTH LINE
 - ADJACENT PROPERTY LINE
 - DAKOTA COUNTY CAST IRON MONUMENT
 - FOUND IRON PIPE, UNLESS OTHERWISE NOTED
 - MNDOT CONCRETE MONUMENT

MATCH LINE B
 (SEE SHEET 1 OF 4 SHEETS)

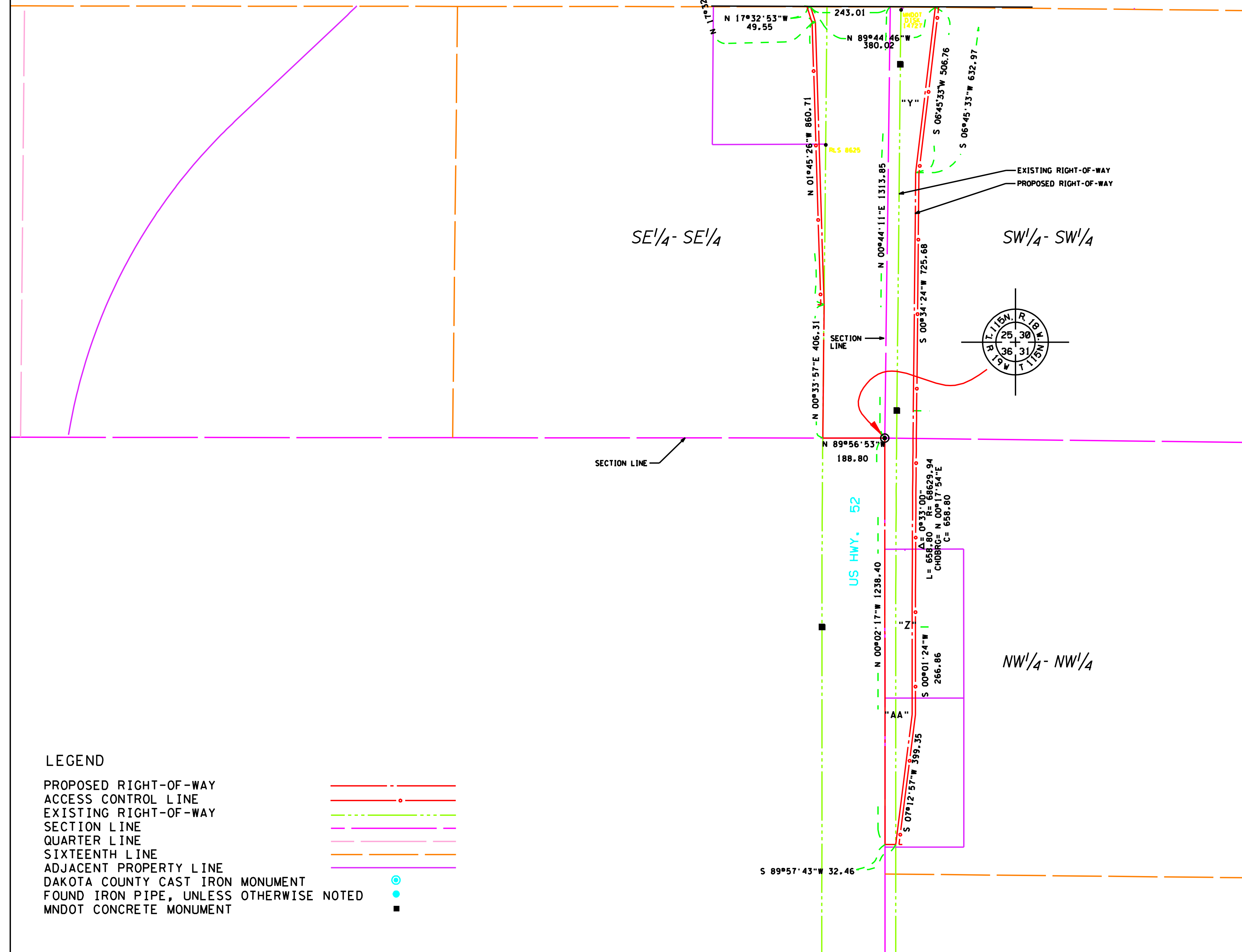


Bearing System is the Dakota County Coordinate System, NAD 83, (1996) Adjustment.
 All distances shown on map are measured in feet.



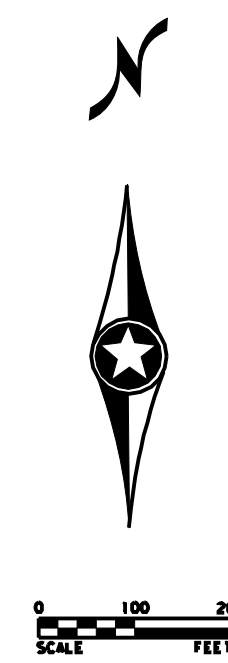
CITY OF ROSEMOUNT
 TH 52/CSAH 42
 OFFICIAL MAP OF
 PROPOSED RIGHT-OF-WAY

MATCH LINE C
 (SEE SHEET 1 OF 4 SHEETS)



LEGEND

- PROPOSED RIGHT-OF-WAY ———
- ACCESS CONTROL LINE ———
- EXISTING RIGHT-OF-WAY - - - - -
- SECTION LINE - - - - -
- QUARTER LINE - - - - -
- SIXTEENTH LINE - - - - -
- ADJACENT PROPERTY LINE - - - - -
- DAKOTA COUNTY CAST IRON MONUMENT ●
- FOUND IRON PIPE, UNLESS OTHERWISE NOTED ●
- MNDOT CONCRETE MONUMENT ■



Bearing System is the Dakota County Coordinate System, NAD 83, (1996) Adjustment.

All distances shown on map are measured in feet.

