

You Are Invited to a Public Open House for the Highway 52/42/55 Interchange Partnership Study Phase 2

BACKGROUND

The Highway 52/42/55 Interchange Partnership Study, completed in 2002, resulted in the following recommendations:

- Upgrade the Trunk Highway (TH) 52/County Road 42 interchange.
- Eliminate the TH 52/TH 55 interchange.
- Reorient arterial commuter traffic from TH 55 to a combined TH 55/County Road 42. The diagonal segment of old TH 55 will become a collector roadway (Courthouse Boulevard) compatible with existing and future direct property access.
- Develop a supporting roadway system, including frontage and backage roads, to serve the identified land uses.

A layout of the reconstruction of the TH 52/County Road 42 interchange was approved in June 2003, and an Environmental Assessment for the interchange area was approved in February 2004. Project partners recently completed an Official Map of Proposed Right-of-Way for the interchange area based on the construction limits from the approved layout.

WHAT IS BEING STUDIED NOW?

Mn/DOT, Dakota County, the City of Rosemount, and their consultant, TKDA, are conducting the second phase of the design of the reconstruction of the TH 52/County Road 42 interchange. They are also working on the project scoping and preliminary engineering for roadway realignment and geometric improvements at the TH 55/County Road 42 intersection, in preparation for the elimination of the TH 52/TH 55 interchange.

PUBLIC OPEN HOUSE TIME AND LOCATION

Tuesday, May 15, 2007, 4:30 p.m. - 6:30 p.m.
 Rosemount Fire Station #2
 13581 Azalea Avenue
 Rosemount, MN 55068

The purpose of the meeting is to provide you with the opportunity to review the current layout (also shown on the back of this notice) and Official Map of Proposed Right-of-Way, provide comments, and ask questions. Representatives of Mn/DOT, Dakota County, the City of Rosemount, and TKDA will be available to receive your comments and answer your questions.

If you are unable to attend the open house, please e-mail your comments to: John Sass, Dakota County Transportation Manager, at John.Sass@co.dakota.mn.us. If you have questions or would like additional information, Mr. Sass can be reached at (952) 891-7130.

VISIT OUR WEB PAGE

Please visit our web page to read more about the history of the project and to view layouts and the Official Map of Proposed Right-of-Way: <http://www.co.dakota.mn.us/EnvironmentRoads/RoadConstruction/Future/CP42-82.htm>

John Sass
 Dakota County Transportation Department
 14955 Galaxie Avenue, Third Floor
 Apple Valley, MN 55124-8579

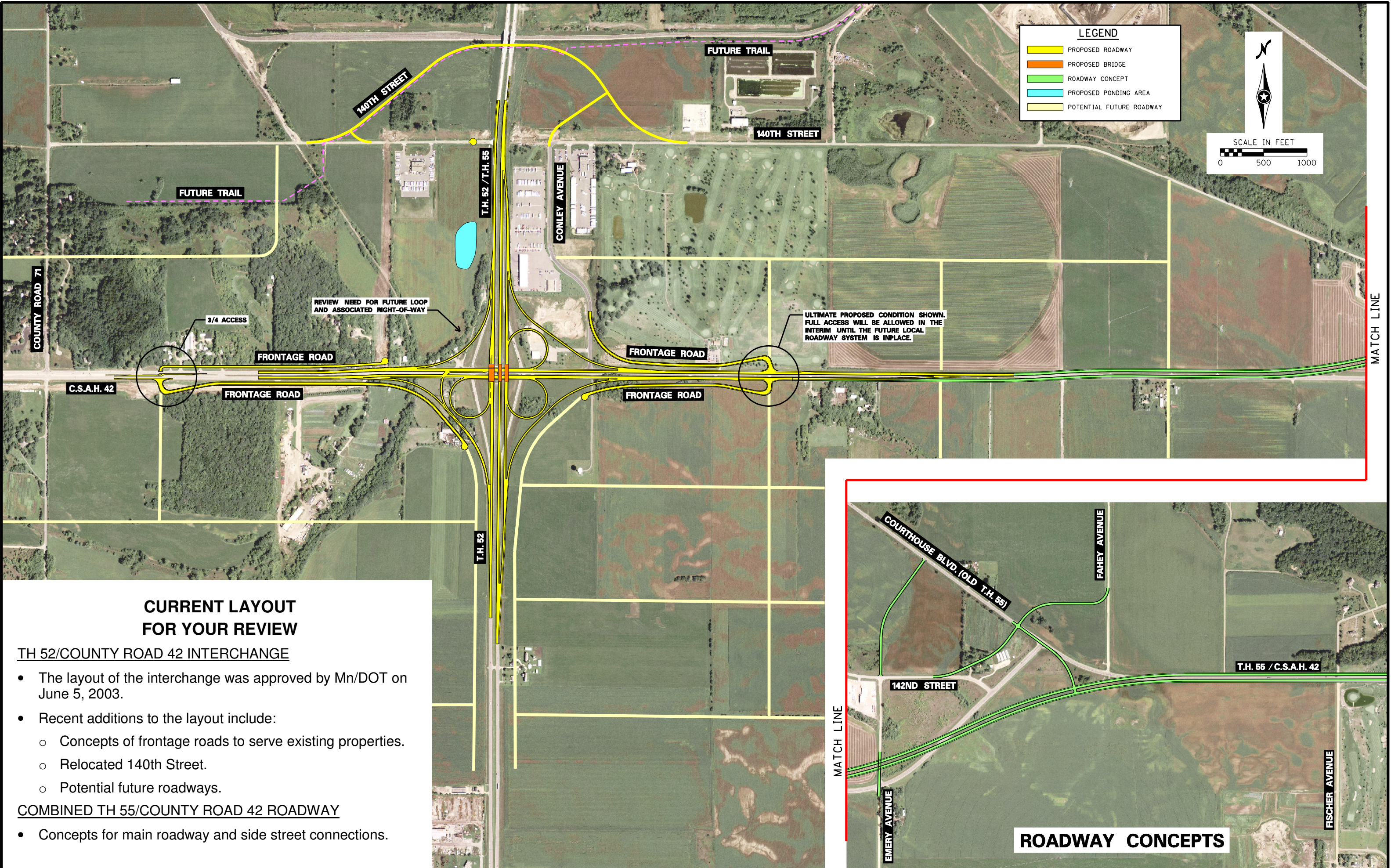


		May	June	July	Aug	Sep	Oct	Nov	Dec	Jan
	TH 52/COUNTY ROAD 42 INTERCHANGE									
	Public Open House - May 15									
	Develop/Study Frontage Road Concepts									
	Present Official Mapping at Public Hearing									
	Update Layout									
	Prepare Preliminary Plans									
	Public Open House									
	COMBINED TH 55/COUNTY RD 42 ROADWAY									
	Public Open House - May 15									
	Develop/Study Alternatives									
	Environmental Studies/Documentation									
	Prepare Layout									
	Layout Approval									

Project Schedule

HIGHWAY 52/42/55 INTERCHANGE PARTNERSHIP STUDY PHASE 2





LEGEND

- PROPOSED ROADWAY
- PROPOSED BRIDGE
- ROADWAY CONCEPT
- PROPOSED PONDING AREA
- POTENTIAL FUTURE ROADWAY

SCALE IN FEET

0 500 1000

CURRENT LAYOUT FOR YOUR REVIEW

TH 52/COUNTY ROAD 42 INTERCHANGE

- The layout of the interchange was approved by Mn/DOT on June 5, 2003.
- Recent additions to the layout include:
 - Concepts of frontage roads to serve existing properties.
 - Relocated 140th Street.
 - Potential future roadways.

COMBINED TH 55/COUNTY ROAD 42 ROADWAY

- Concepts for main roadway and side street connections.

ULTIMATE PROPOSED CONDITION SHOWN. FULL ACCESS WILL BE ALLOWED IN THE INTERIM UNTIL THE FUTURE LOCAL ROADWAY SYSTEM IS INPLACE.

REVIEW NEED FOR FUTURE LOOP AND ASSOCIATED RIGHT-OF-WAY

ROADWAY CONCEPTS