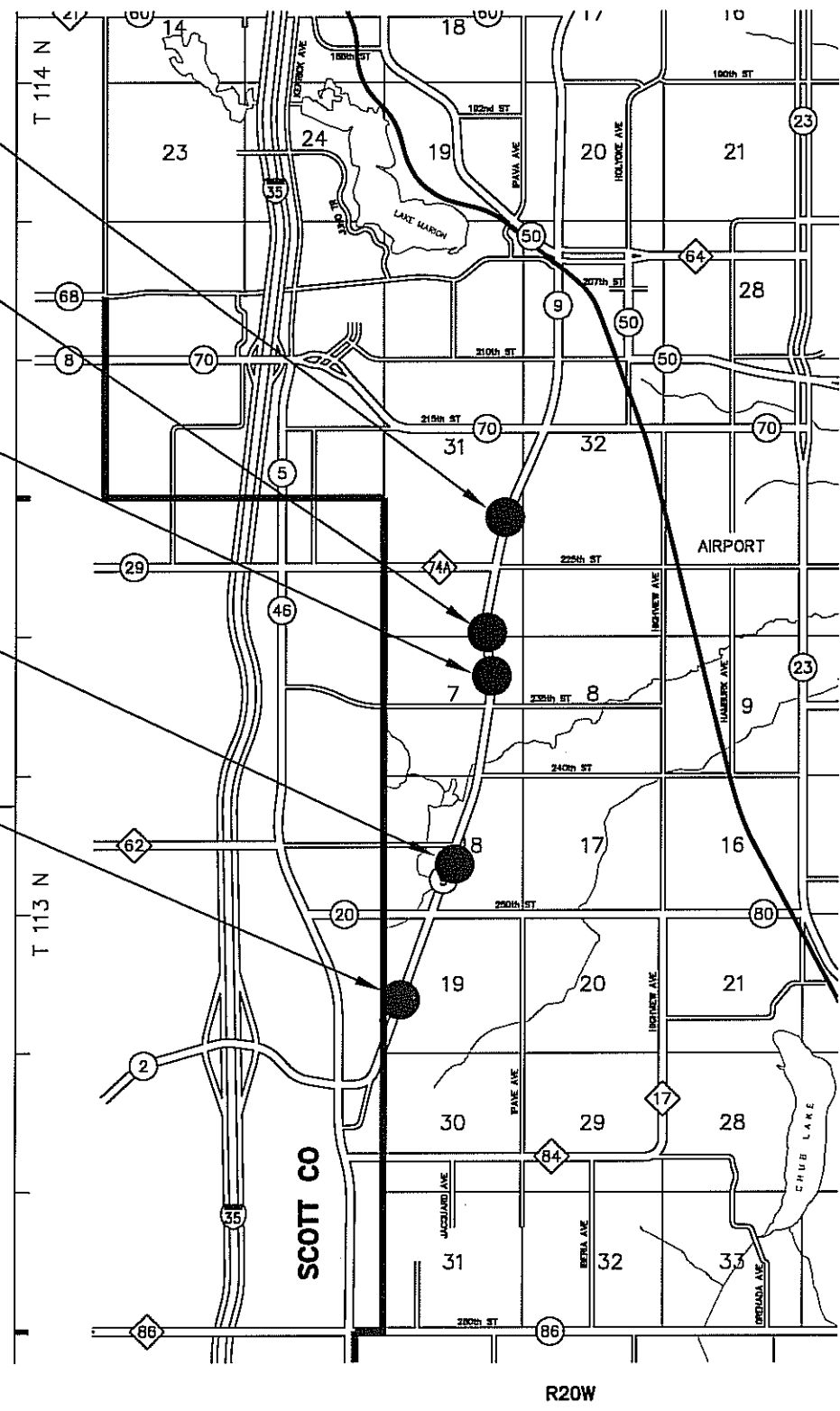


# SITE MAP

- SITE F6**  
LOCATED ON C.S.A.H. 9  
APPROXIMATELY 2150'  
NORTH OF CO. RD. 74A
- SITE F5**  
LOCATED ON C.S.A.H. 9  
APPROXIMATELY 2100'  
NORTH OF 235TH STREET
- SITE F4**  
LOCATED ON C.S.A.H. 9  
APPROXIMATELY 1050'  
NORTH OF 235TH STREET
- SITE F2**  
LOCATED ON C.S.A.H. 9  
APPROXIMATELY 1150'  
NORTH OF C.S.A.H. 80
- SITE F1**  
LOCATED ON C.S.A.H. 9  
APPROXIMATELY 1000'  
NORTH OF 257TH STREET

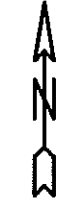


**SITE H**  
LOCATED ON C.S.A.H. 26  
APPROXIMATELY 300'  
EAST OF T.H. 3

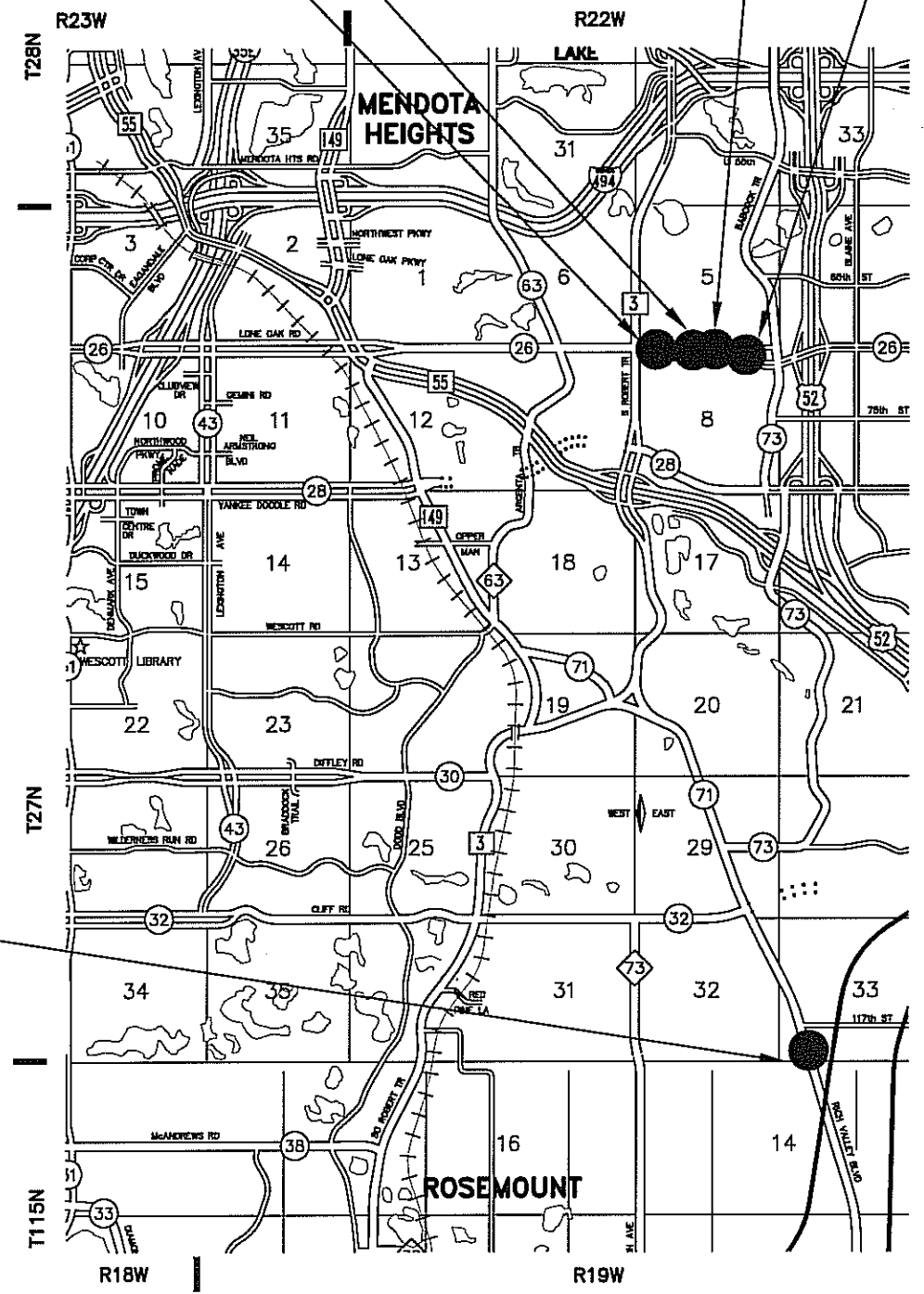
**SITE I**  
LOCATED ON C.S.A.H. 26  
APPROXIMATELY 750'  
EAST OF T.H. 3

**SITE J**  
LOCATED ON C.S.A.H. 26  
APPROXIMATELY 450'  
WEST OF ANGUS AVE.

**SITE K**  
LOCATED ON C.S.A.H. 26  
APPROXIMATELY 450'  
EAST OF ARLENE AVE.



**SITE C6**  
LOCATED ON C.S.A.H. 71  
APPROXIMATELY 200'  
SOUTH OF 117TH STREET



CERTIFIED BY *Thomas A. Anton* LIC. NO. 20396 *5/26/2009*  
LICENSED ENGINEER