

# DAKOTA COUNTY SOCIAL SERVICES DAYCARE ESCAPE PLAN

Use this grid example to draw a floor plan.  
Show the whole house with two exits from each room.  
In buildings with three or more dwelling units, enclosed  
exit stairs must be indicated.

SAMPLE FLOOR PLAN - A Blueprint to Save Your Life

SYMBOLS TO BE USED:

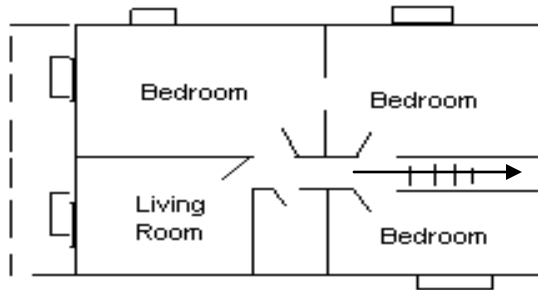
Normal Exit Route:  
BLACK Arrow

Emergency Exit Route:  
RED Arrow

Doors: 

Porches: 

Windows: 



## FIRE AND POLICE EMERGENCIES – 911

DESIGNATE PLACE TO MEET OUTDOORS FOR ROLL CALL:

DESIGNATE PLACE TO MEET IN CASE OF STORM OR TORNADO:

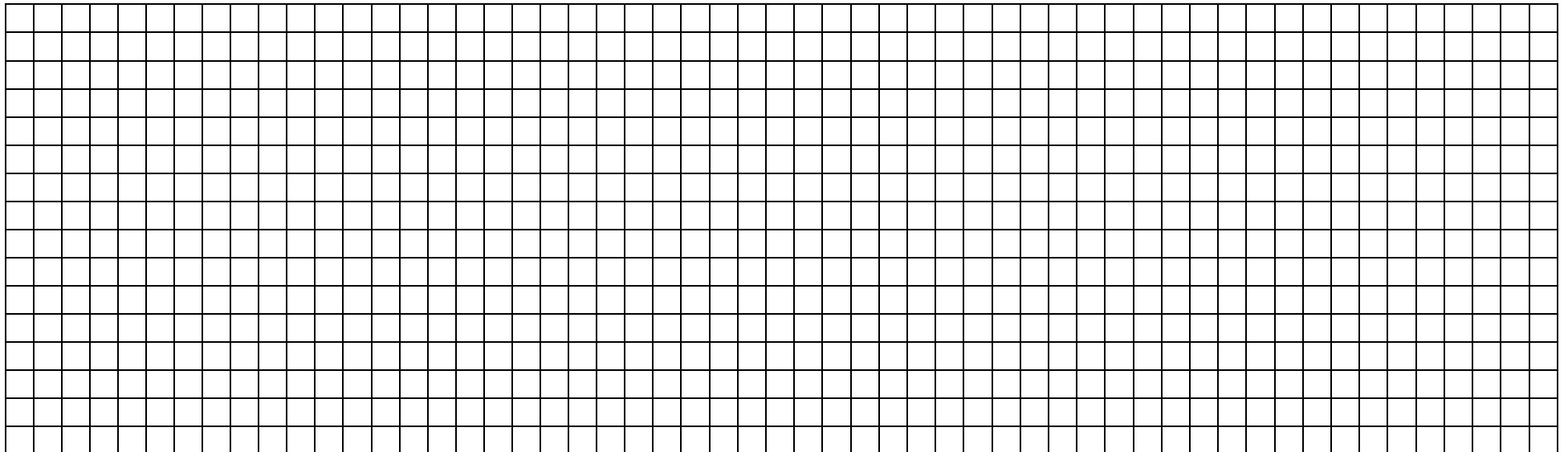
Fire Extinguisher Locations: \_\_\_\_\_

Smoke Detector Locations:

Basement Level: \_\_\_\_\_

Main Level: \_\_\_\_\_

Second Level: \_\_\_\_\_



**DAKOTA COUNTY SOCIAL SERVICES  
ESCAPE PLAN**

A large grid of graph paper, consisting of 30 columns and 30 rows of small squares, intended for drawing an escape plan.