

Dakota County Parks, Lakes, Trails and Greenways Vision, 2030

What's New?

GREAT PLACES: Destination Parks

- * New Regional Park in Vermillion Highlands
- * More things to do in parks
 - Winter activity area
 - Gathering and celebration areas
 - Swimming and water play areas
- * More popular "park basics"
 - Enhanced picnicking
 - Biking and accessible trail loops

CONNECTED PLACES: Greenway Trails

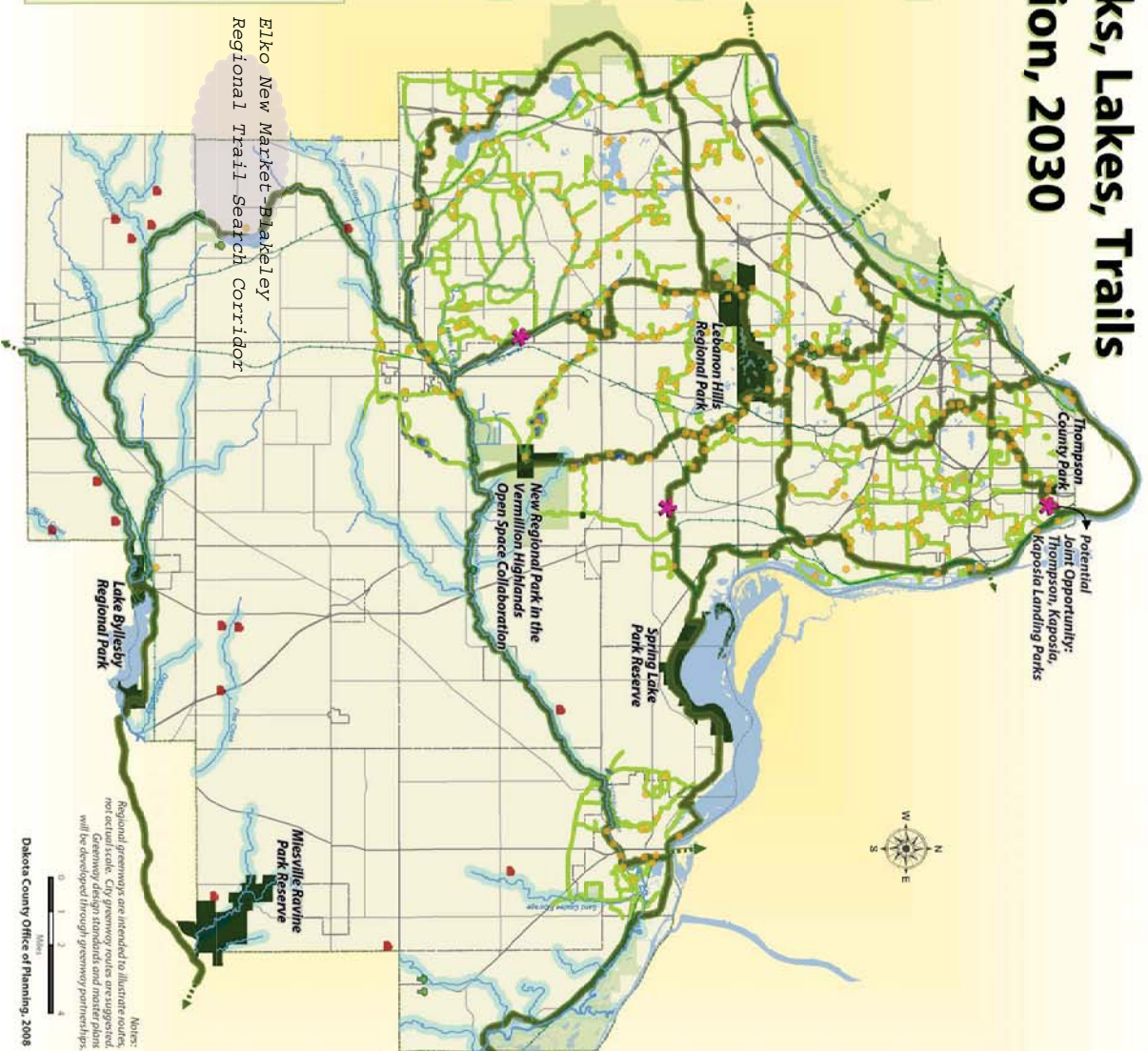
- * "Bring parks to people" -- Linear parks connect parks, schools, lake trails, playgrounds, libraries, and the Minnesota and Mississippi Rivers.
- * Walking, biking, and in-line skating
- * Public agencies work together to create 200 miles of greenways using mostly publicly-owned land.

PROTECTED PLACES: Green Infrastructure

- * Enhance and protect park resources
- * Protect stream corridors in public/private partnerships
- * Protect natural areas and open space in public/private partnerships

DAKOTA COUNTY PARK SYSTEM and COLLABORATIVE OPEN SPACE PROTECTION

- Dakota County Parks
- Federal, State, and Other Regional Open Space
- Existing and Planned Regional Greenways
- Regional Status Discussion with Metropolitan Council
- Example City Greenways (route concepts)
- Stream Conservation Corridors and Greenways
- Destinations: City Parks, Schools, Lakes, Libraries
- Privately-Owned Protected Farmland (FNAAP)
- Private/Public Protected Natural Areas (PNAAP)
- Potential Rail to Trail Opportunities



Notes:
Regional greenways are intended to illustrate routes, not exact Greenways design standards and master plans will be developed through greenway partnerships.
Dakota County Office of Planning, 2008

Concepts for Greenways



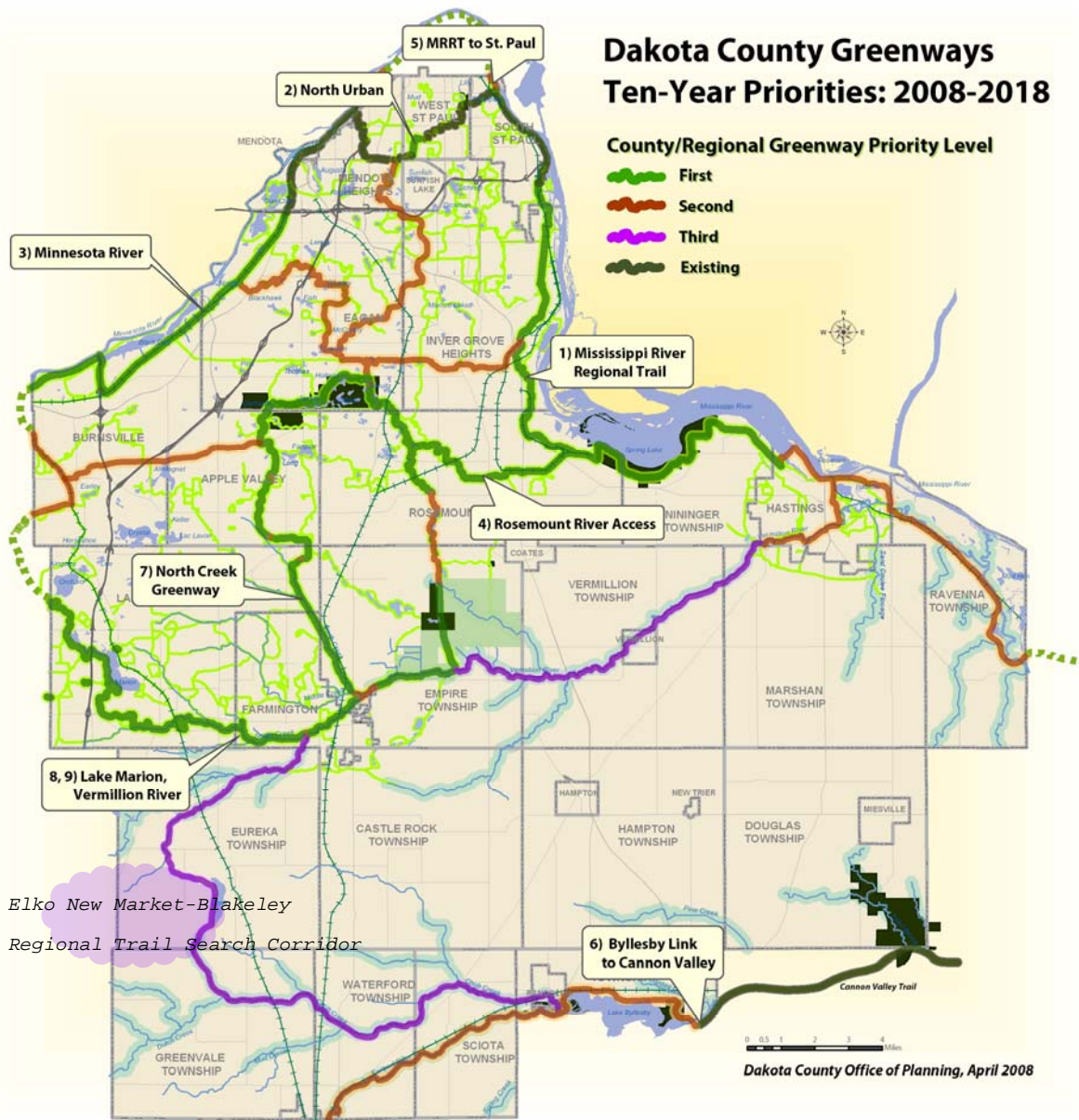
Rethinking Trails as Greenways



Multiple Benefits of Greenways



Connected Places: Ten-Year Priorities for Regional Greenway Trails



Priority Regional Greenway Trails for the Next Ten Years

1. Mississippi River Regional Trail (MRRT) – Inver Grove Heights to Hastings	14 miles
2. North Urban Regional Trail (NURT) – final segment	1 mile
3. Minnesota River– Savage to 494	7 miles
4. Rosemount River Access (discuss/propose regional status with Metropolitan Council) – Rosemount to MRRT	5 miles
5. Mississippi River Regional Trail – South St. Paul to St. Paul	1 mile
6. Cannon Valley Regional Trail – Byllesby East to Cannon Falls	1 mile
7. North Creek Greenway (discuss/propose regional status with Metropolitan Council) – MN Zoo to Vermillion River	9 miles
8. Lake Marion Greenway – Lake Marion to Cedar Avenue	7 miles
9. Vermillion River Greenway – Cedar Ave. to Vermillion Park	6 miles
	Total = 51 miles