



**WELCOME**

**Delaware Avenue & School Travel  
Safety Improvements**

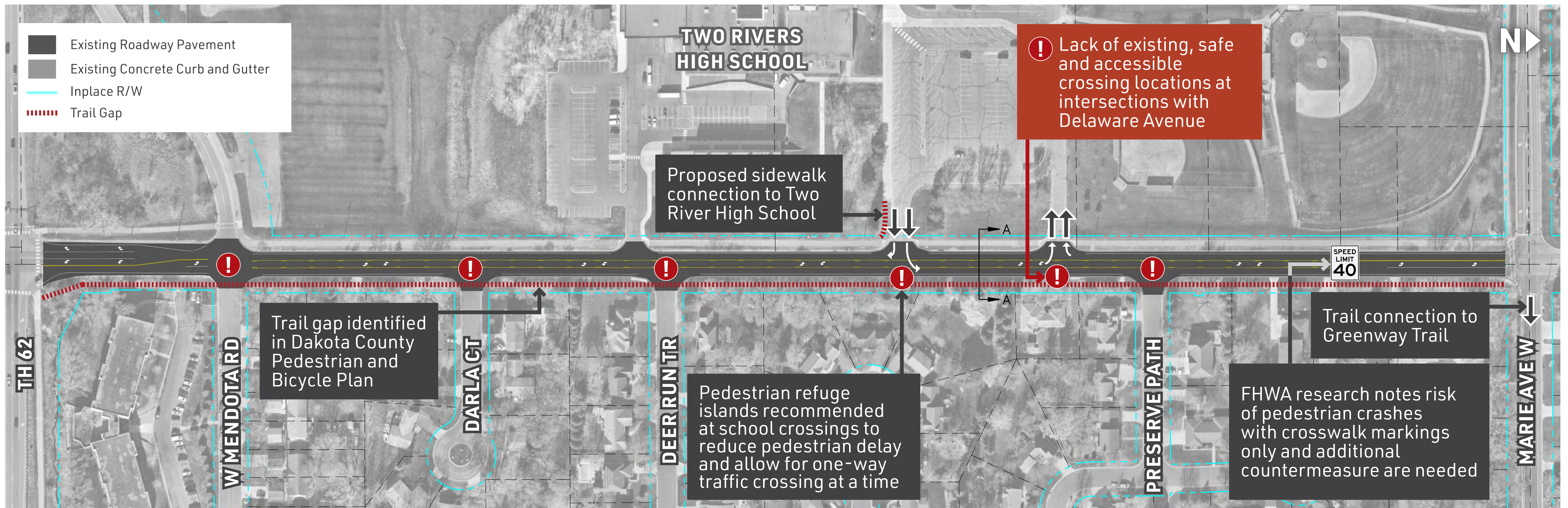
*OPEN HOUSE*

1  
Implement pedestrian and bicycle safety improvements identified in the Dakota County School Travel Safety Assessment at Two Rivers High School including considerations for a pedestrian and bicycle facility on east side of Delaware Avenue and safer access to the school.

2  
Provide improved multimodal travel options for people of all ages and abilities to connect to the school campus, area trail system, public transit options, and other area destinations.

## PROJECT PURPOSE

3  
Fill a medium priority trail gap identified in the 2018 Dakota County Pedestrian and Bicycle Study.



### School Travel Safety Assessment Background

- Students do not feel safe crossing Delaware Avenue due to traffic speeds and volumes
- Parents/caregivers have safety concerns with students walking on east side of Delaware Avenue

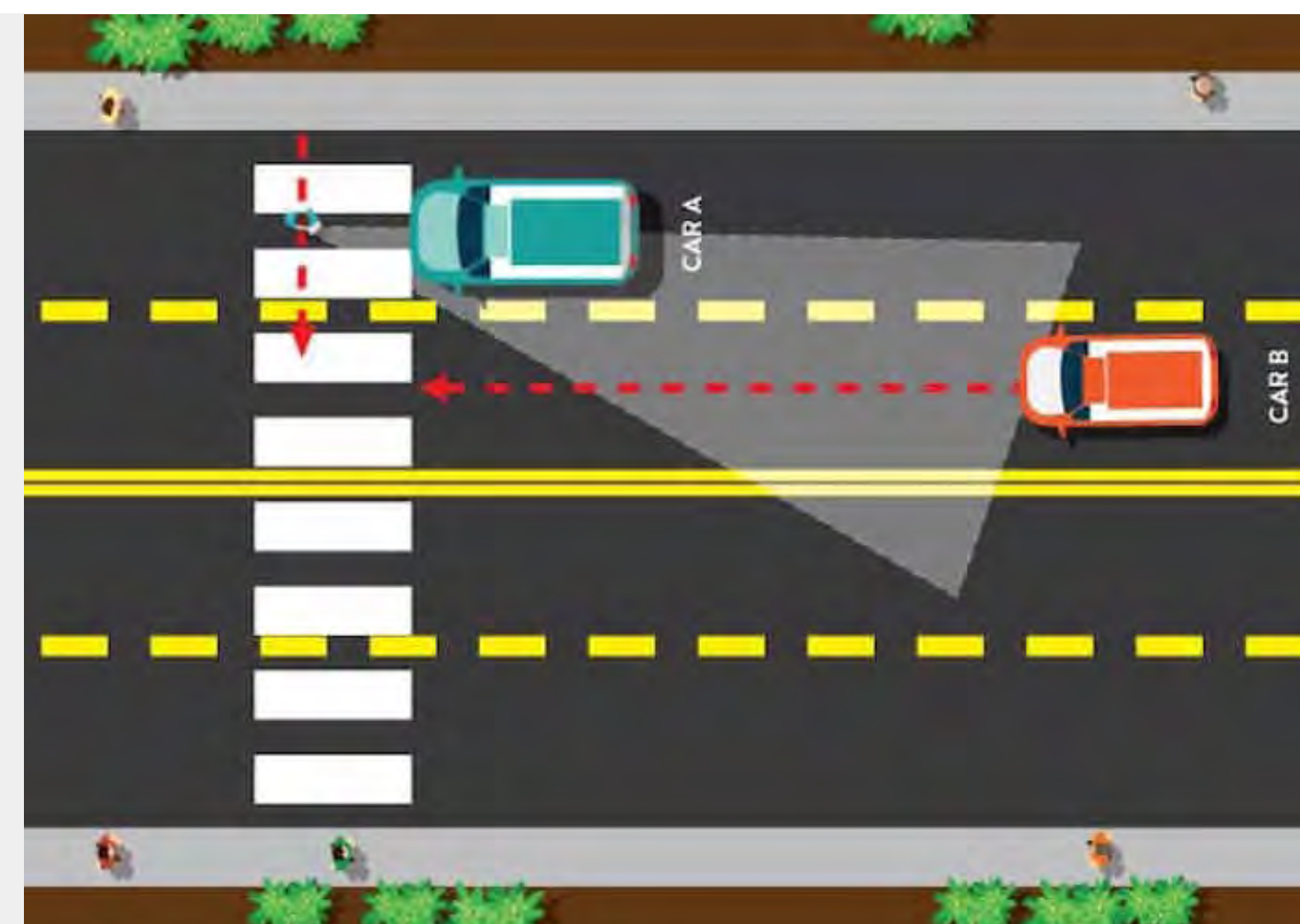
- Recommendations include an enhanced crossing at Two Rivers High School, extension of trail between TH 62 and Marie Avenue on the east side of Delaware Avenue, and school speed zone study following implementation of improvements
- Enhanced crossing improvements include consideration for signage, high visibility crosswalk markings, lighting, median refuge, and pedestrian activated devices

**CAR A** stopped for the pedestrian to cross.

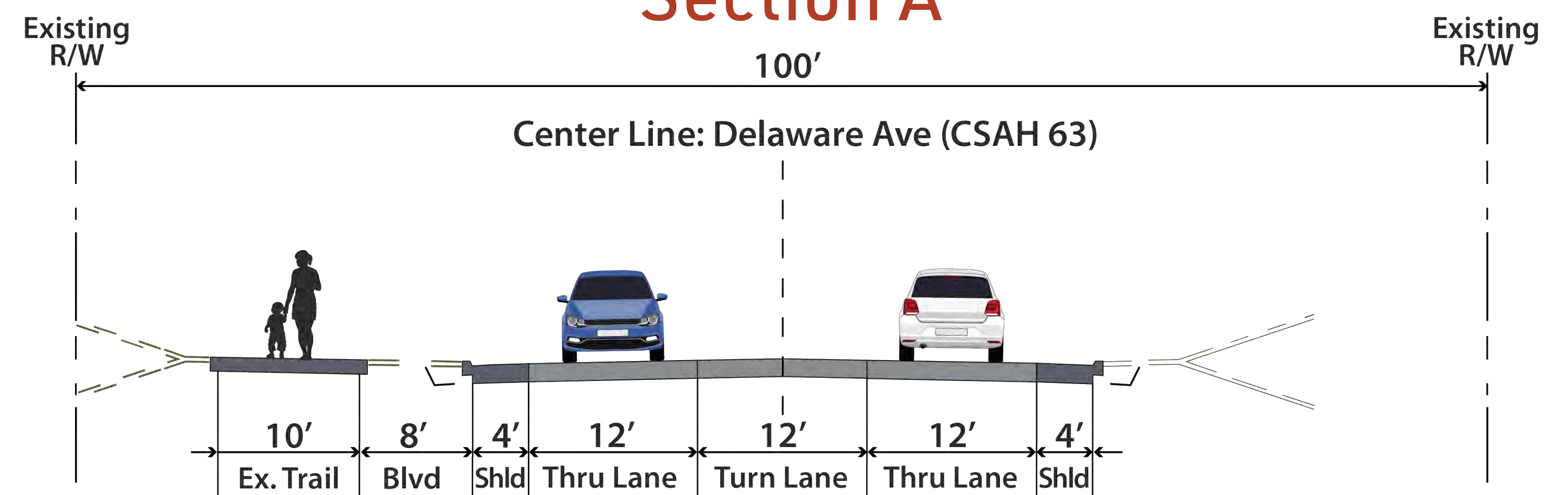
**CAR B** cannot see the pedestrian.

#### Multi-lane threat:

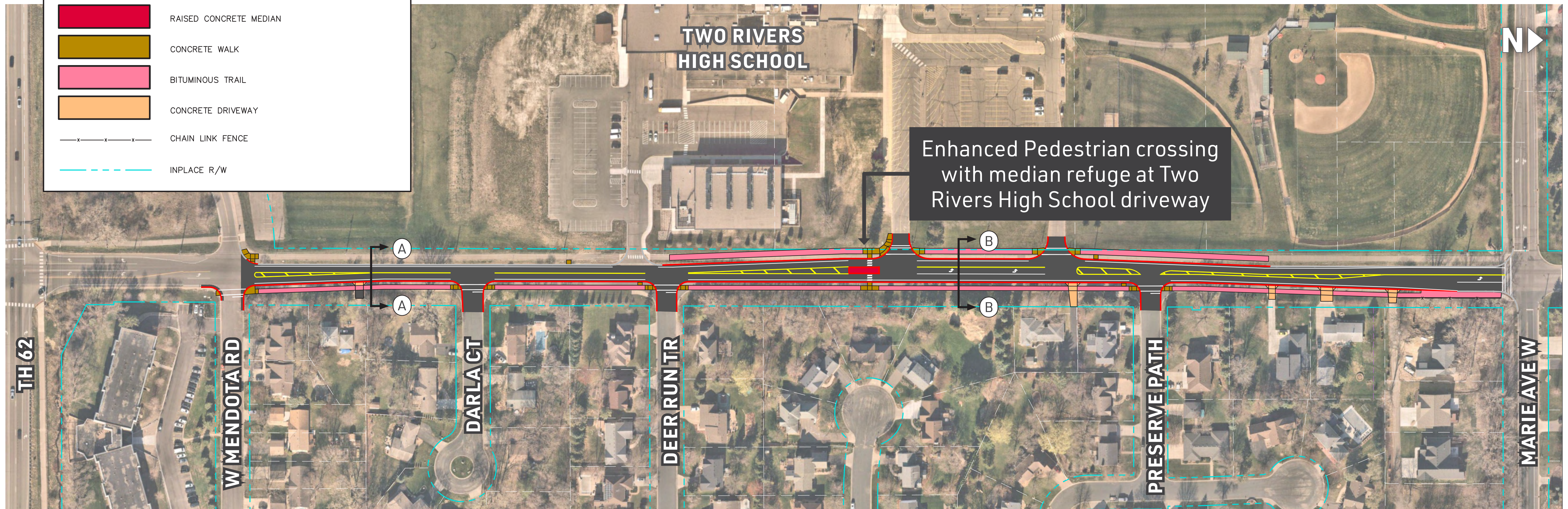
Existing three-lane section on Delaware Avenue creates unsafe multi-lane threat situation for crossing pedestrians.



### Section A



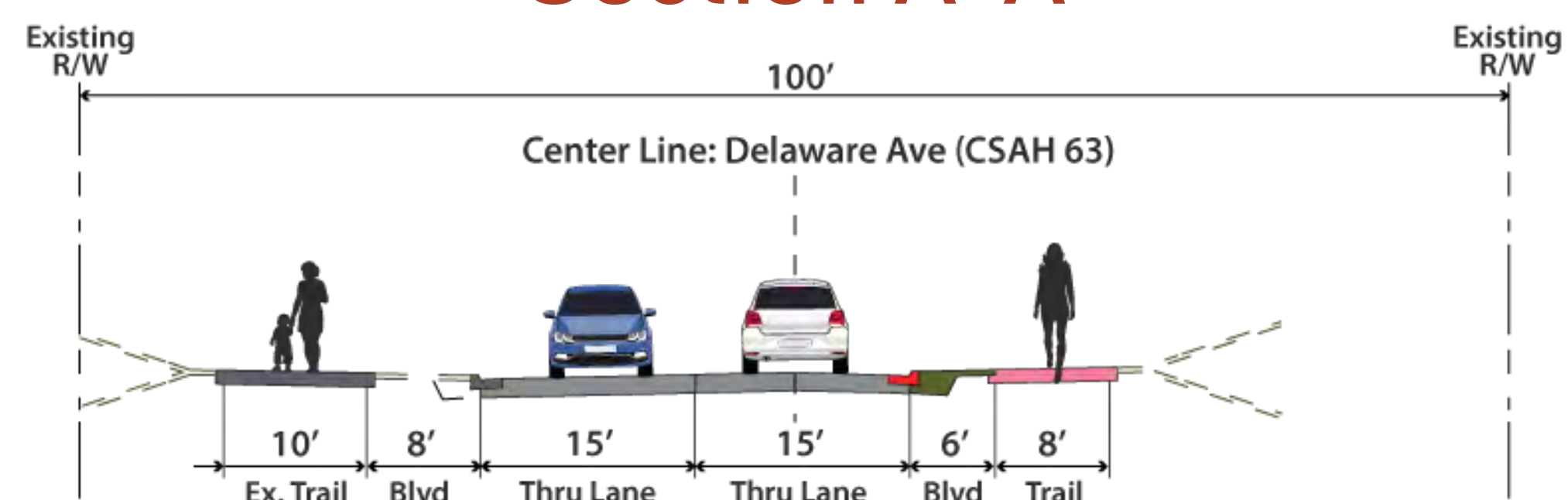
LEGEND	
	BITUMINOUS PAVEMENT RECONSTRUCTION / OVERLAY
	PROPOSED CONCRETE CURB AND GUTTER
	EXISTING CONCRETE CURB AND GUTTER
	RAISED CONCRETE MEDIAN
	CONCRETE WALK
	BITUMINOUS TRAIL
	CONCRETE DRIVEWAY
	CHAIN LINK FENCE
	INPLACE R/W



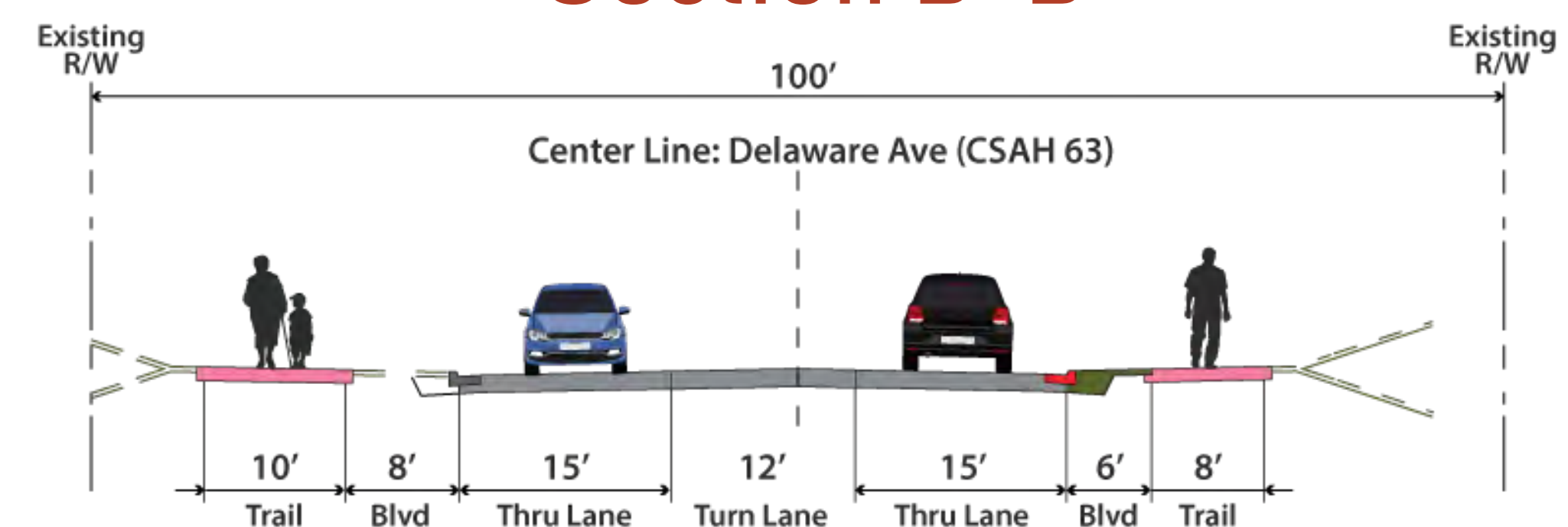
- ✔ Maintains northbound left turn lane at High School
- ✔ Provides off-street trail and dedicated crossing location at school
- ✔ Minimized impacts to trees, front yards, and driveway slopes

- ✔ Project is supported by Two Rivers High School and construction disturbance has been permitted
- ✔ Fills gap in trail system along east side of Delaware Avenue
- ✔ Project was awarded a \$600,000 federal funding grant for construction











### Section A-A

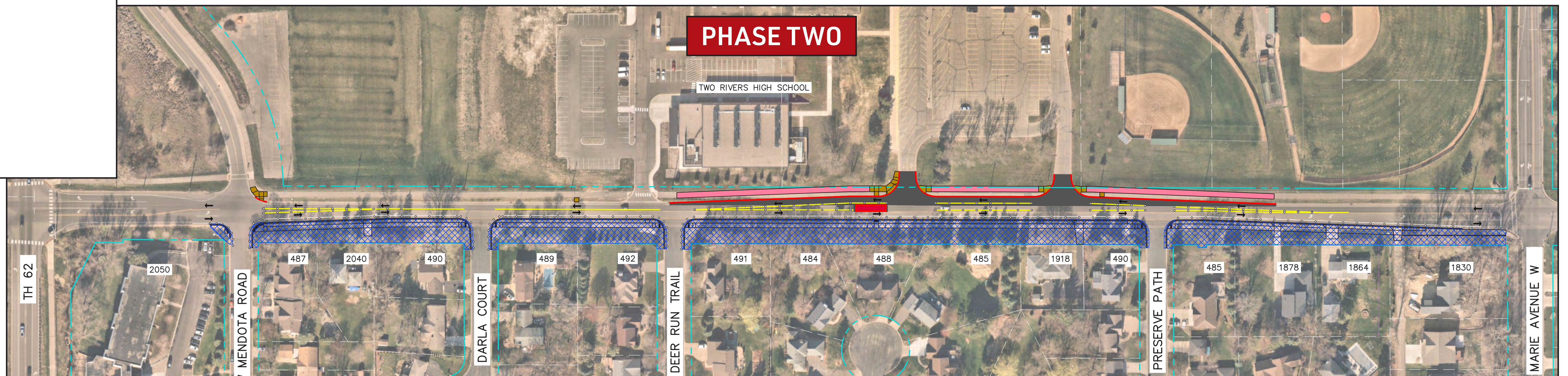


### Section B-B

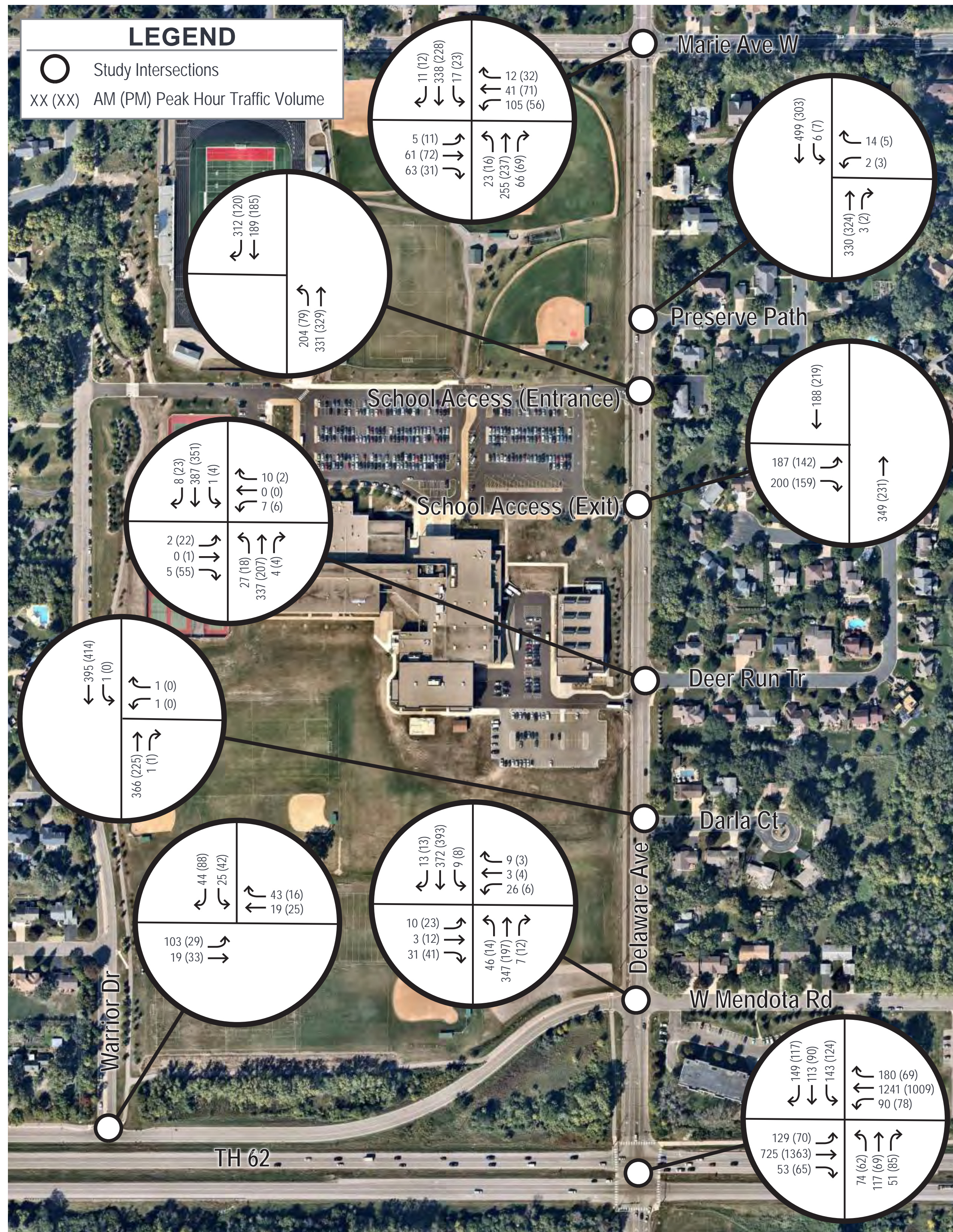


### LEGEND

-  WORK AREA - PHASE ONE
-  WORK AREA - PHASE TWO
-  BITUMINOUS PAVEMENT RECONSTRUCTION
-  PROPOSED CONCRETE CURB AND GUTTER
-  RAISED CONCRETE MEDIAN
-  CONCRETE WALK
-  BITUMINOUS TRAIL
-  INPLACE R/W
-  TRAFFIC BARRELS
-  TRAFFIC DIRECTION



## Intersection Traffic Count Data



## Traffic Considerations

- Project staff observed peak pick-up and drop-off operations at Two Rivers High School in Spring of 2023. Congestion was observed and generally was contained to the main school parking lot, infrequently impacting traffic operations on Delaware Avenue. The project does not anticipate impacting congestion levels during peak pick-up and drop-off time periods near Two Rivers High School.
- An analysis on the need for left turn lanes along Delaware Avenue was completed at intersecting streets and busy driveways. The analysis considered vehicle speed and turning movement volumes. It was determined that the northbound left turn into Two Rivers High School is the only location where a left turn lane is warranted. Crash rates at all intersecting public roadways are significantly below the statewide average.
- Inclusion of a median and pedestrian crossing with the narrowed roadway typical section may contribute to lower speeds on the roadway.

## Speed Data Collection Locations

		Northbound	Southbound	Total	
◆ Location	South of High School Exit Driveway	85th Percentile (mph)	42	42	42
	40 mph speed limit	Average (mph)	37	35	36
▼ Location	South of Darla Court	85th Percentile (mph)	42	45	44
	40 mph speed limit	Average (mph)	38	40	39





2023							2024									
June	July	August	September	October	November	December	January	February	March	April	May	June	July	August	September	
Final Design							Bidding		Tree Clearing <i>(Limited)</i>	Private Utility Relocation		Construction				★

*Road Fully Open to Traffic by Labor Day (September 2, 2024)*



*Please visit <https://www.co.dakota.mn.us> and search "Delaware" or scan the QR code to the right for more information on the project.*

