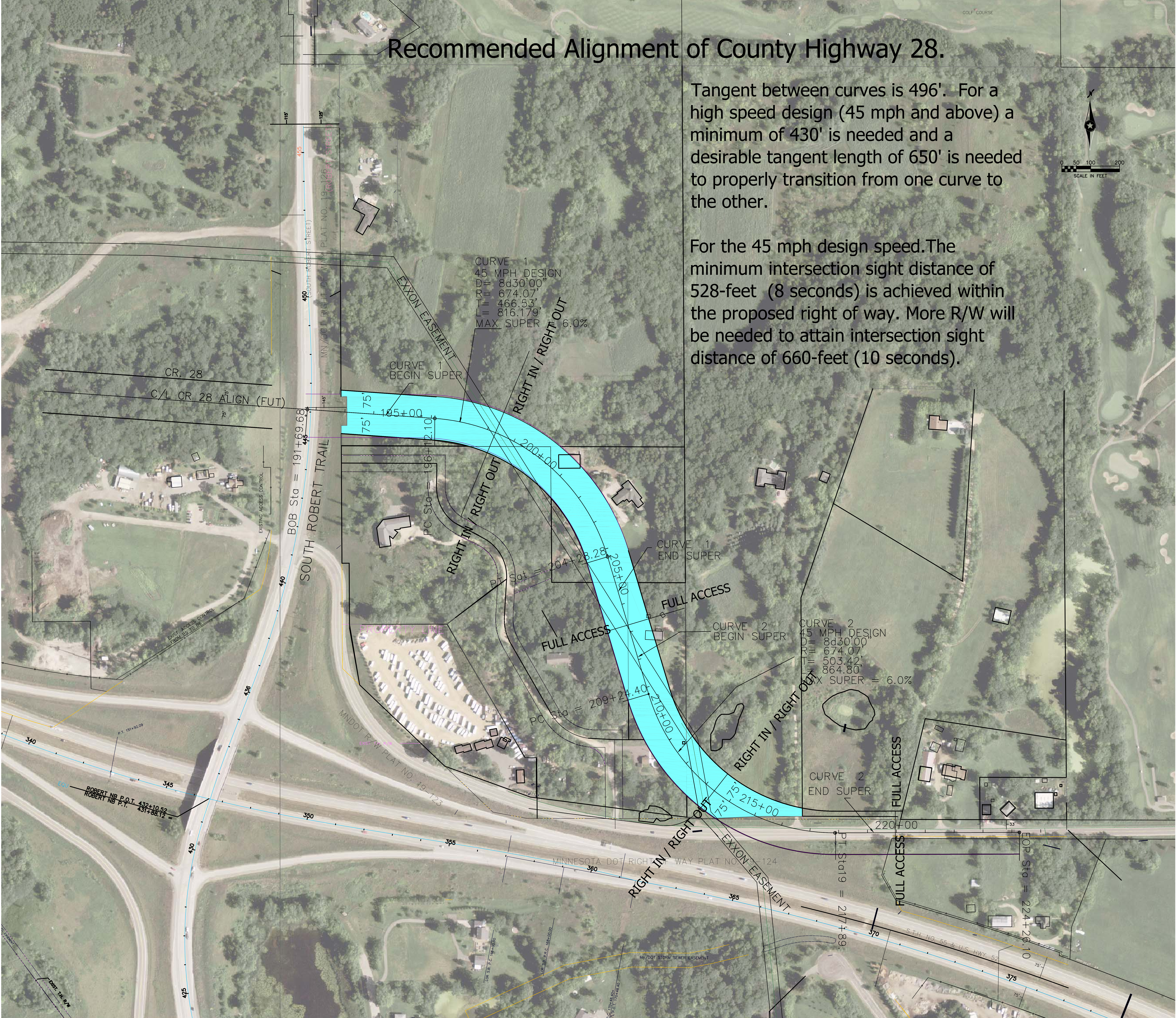
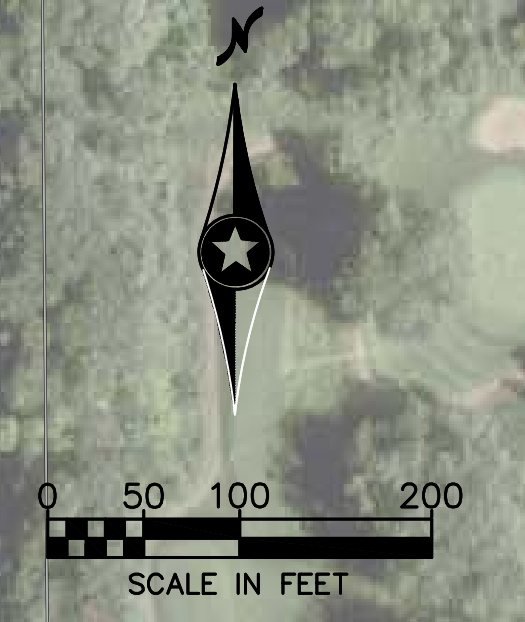


# Recommended Alignment of County Highway 28.

Tangent between curves is 496'. For a high speed design (45 mph and above) a minimum of 430' is needed and a desirable tangent length of 650' is needed to properly transition from one curve to the other.

For the 45 mph design speed. The minimum intersection sight distance of 528-feet (8 seconds) is achieved within the proposed right of way. More R/W will be needed to attain intersection sight distance of 660-feet (10 seconds).



CURVE 1  
45 MPH DESIGN  
D= 8d30'00"  
R= 674.07'  
T= 466.53'  
L= 816.179'  
MAX SUPER = 6.0%

CURVE 2  
45 MPH DESIGN  
D= 8d30'00"  
R= 674.07'  
T= 503.42'  
L= 864.80'  
MAX SUPER = 6.0%