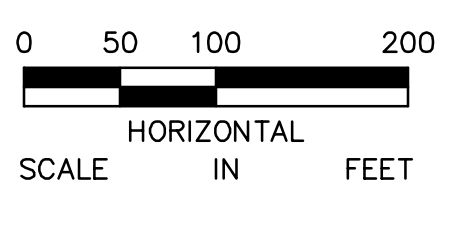
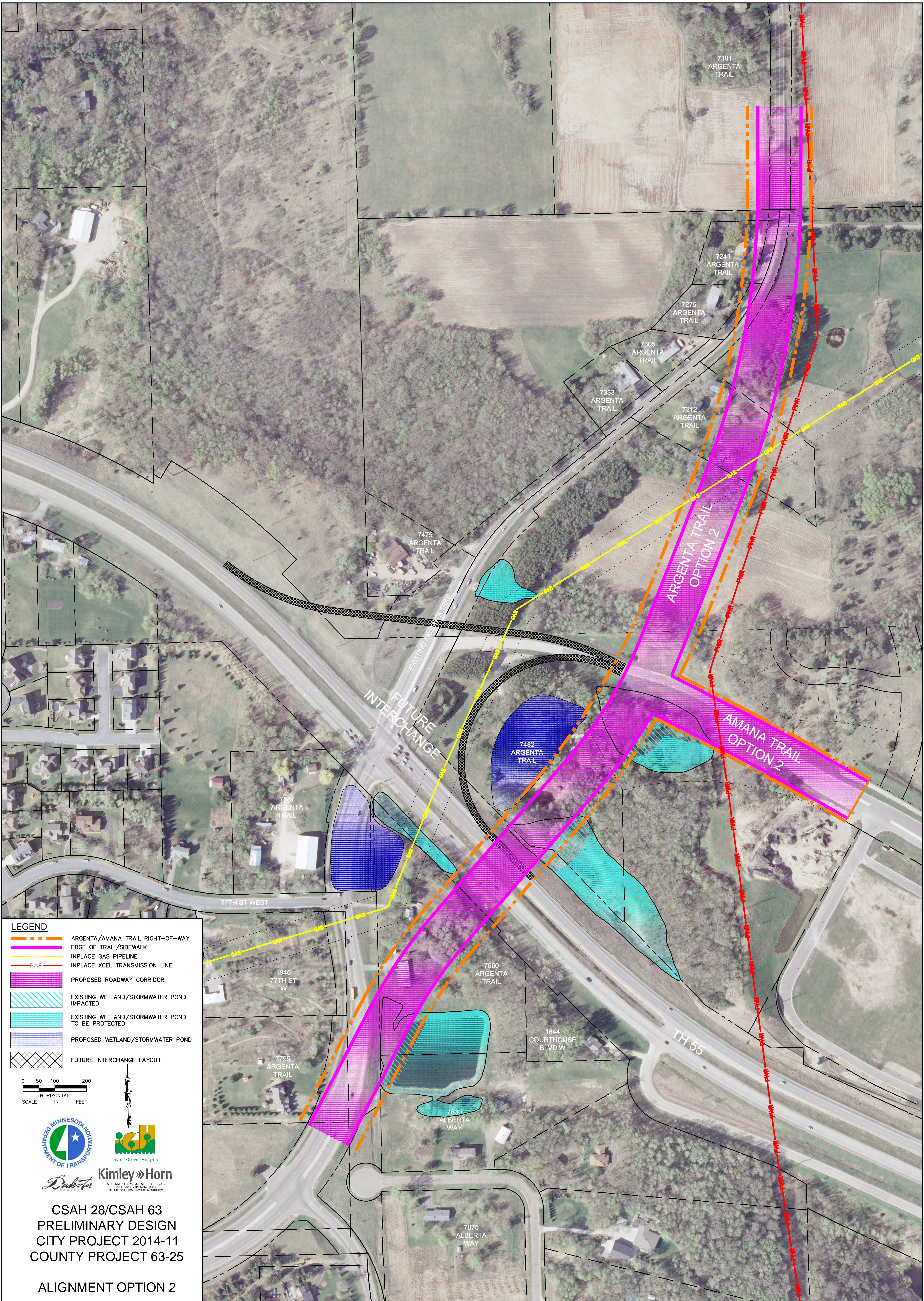


- LEGEND**
- ARGENTA/AMANA TRAIL RIGHT-OF-WAY
 - EDGE OF TRAIL/SIDEWALK
 - INPLACE GAS PIPELINE
 - INPLACE XCEL TRANSMISSION LINE
 - PROPOSED ROADWAY CORRIDOR
 - EXISTING WETLAND/STORMWATER POND IMPACTED
 - EXISTING WETLAND/STORMWATER POND TO BE PROTECTED
 - PROPOSED WETLAND/STORMWATER POND
 - FUTURE INTERCHANGE LAYOUT



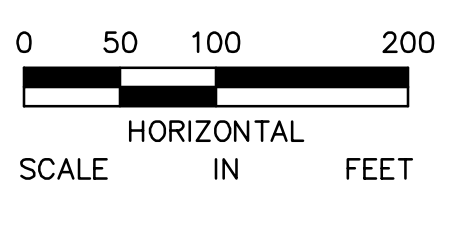
CSAH 28/CSAH 63
 PRELIMINARY DESIGN
 CITY PROJECT 2014-11
 COUNTY PROJECT 63-25

ALIGNMENT OPTION 1

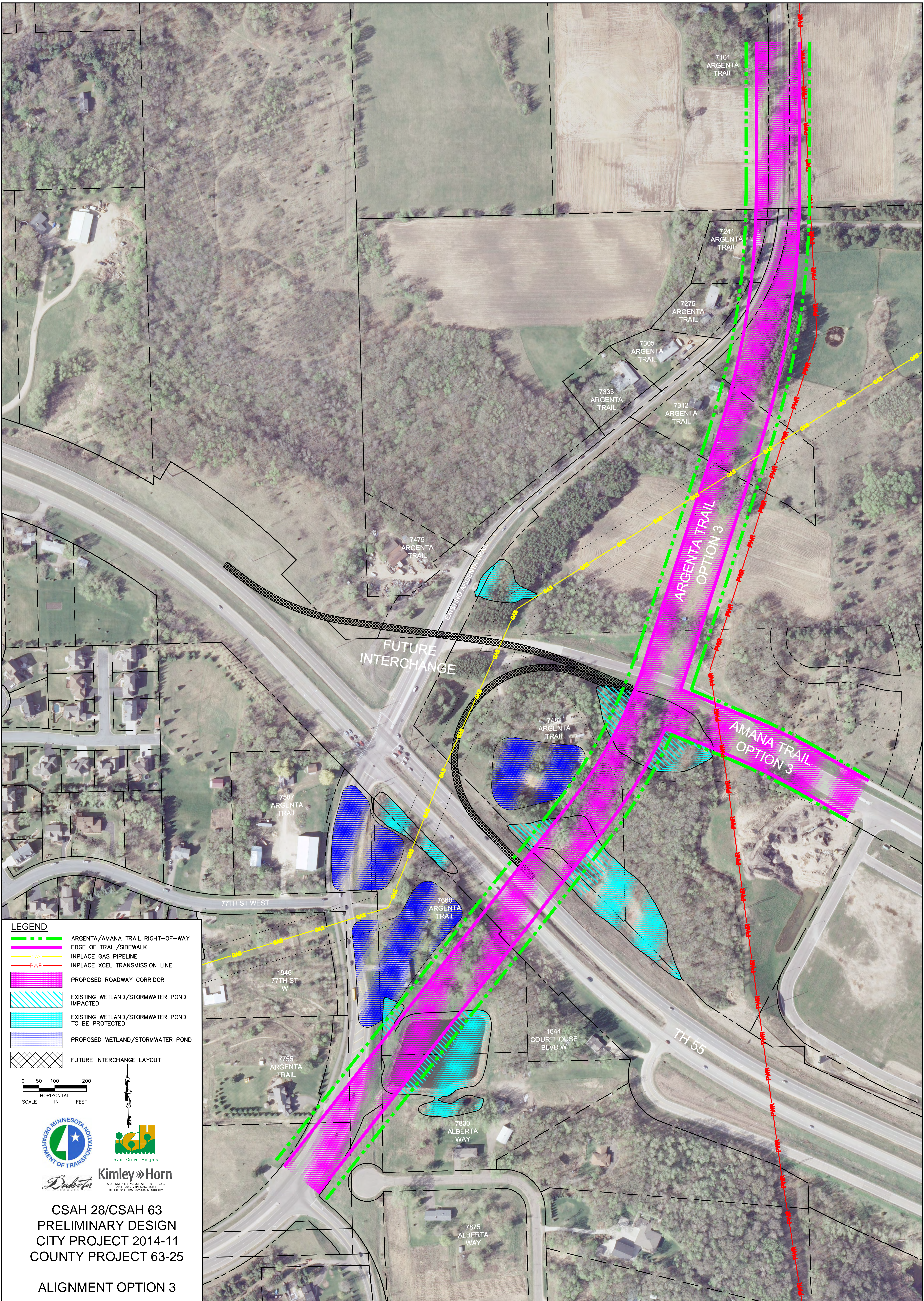


LEGEND

- ARGENTA/AMANA TRAIL RIGHT-OF-WAY
- EDGE OF TRAIL/SIDEWALK
- INPLACE GAS PIPELINE
- INPLACE XCEL TRANSMISSION LINE
- PROPOSED ROADWAY CORRIDOR
- EXISTING WETLAND/STORMWATER POND IMPACTED
- EXISTING WETLAND/STORMWATER POND TO BE PROTECTED
- PROPOSED WETLAND/STORMWATER POND
- FUTURE INTERCHANGE LAYOUT

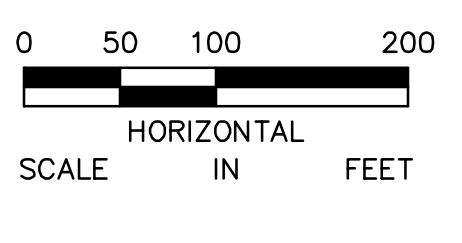


CSAH 28/CSAH 63
 PRELIMINARY DESIGN
 CITY PROJECT 2014-11
 COUNTY PROJECT 63-25
 ALIGNMENT OPTION 2



LEGEND

	ARGENTA/AMANA TRAIL RIGHT-OF-WAY
	EDGE OF TRAIL/SIDEWALK
	INPLACE GAS PIPELINE
	INPLACE XCEL TRANSMISSION LINE
	PROPOSED ROADWAY CORRIDOR
	EXISTING WETLAND/STORMWATER POND IMPACTED
	EXISTING WETLAND/STORMWATER POND TO BE PROTECTED
	PROPOSED WETLAND/STORMWATER POND
	FUTURE INTERCHANGE LAYOUT



CSAH 28/CSAH 63
 PRELIMINARY DESIGN
 CITY PROJECT 2014-11
 COUNTY PROJECT 63-25
 ALIGNMENT OPTION 3