

Mississippi River Regional Trail Spring Lake Park Reserve

Help inform where the trail goes at
an open house **Wednesday, March 6.**

5 to 7 p.m.
Schaar's Bluff Gathering Center,
Spring Lake Regional Park Reserve
8395 127th St. E. Hastings

The Mississippi River Regional Trail will run 27 miles from St. Paul to Hastings when completed in 2015. It will be part of the 3,000-mile national Mississippi River Trail that connects the great river's headwaters at Lake Itasca to the Gulf of Mexico.

The final four miles of Dakota County's 27-mile trail are being planned through Spring Lake Park Reserve outside Hastings. The county wants your input to help:

- Compare the benefits and shortcomings of each alignment option (see graphic on reverse).
- Identify and address public and stakeholder concerns and desires.
- Recommend a preferred alignment option to the County Board.

Can't make it? Contact project manager Chris Hartzell at chris.hartzell@co.dakota.mn.us or (952) 891-7106.

General information on Dakota County's greenway system is at www.hkgi.com/projects/dakota. Information on the national Mississippi River Trail is at www.mississippirivertrail.org



Open house format 5 to 5:30 p.m.

Read about the options and look at maps at your pace; staff will be on hand to answer your questions.

Presentation 5:30 to 6 p.m.

Staff will give a brief presentation on the Mississippi River Regional Trail and the trail alignment options.

Small group sessions 6 to 7 p.m.

Break into small groups to dive into details on potential trail features and the alignments to get your opinion.

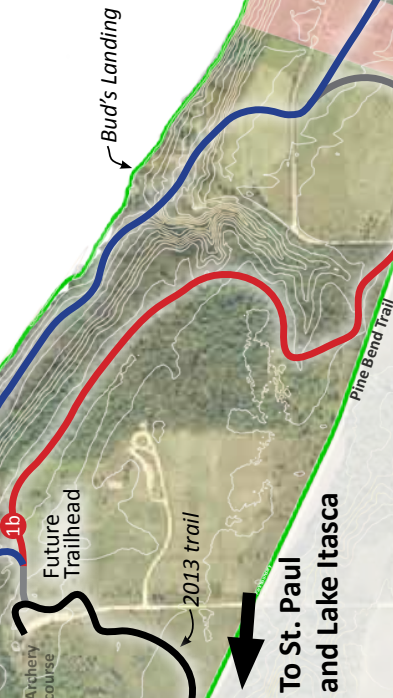
Stop by any time between 5 and 7 p.m.

Mississippi River Regional Trail — Spring Lake Park Reserve Route Options

Segment 1

Segment 1 begins at the existing archery use area where the parking and bathroom facility is planned to be utilized as a major trailhead for the MRRT.

Segment 1 has two primary alignment options that either travel along top of the bluff through a wooded area or at the bottom of the bluff near Spring Lake.



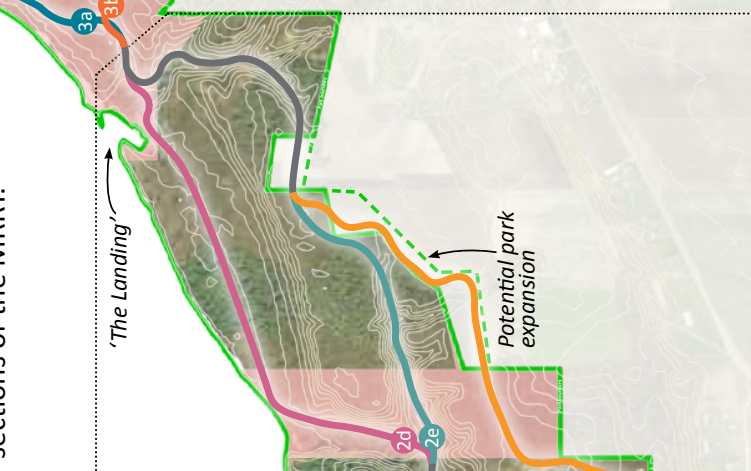
Segment 2

Segment 2 is the middle section of Spring Lake Park Reserve connecting the western and eastern use areas. Currently, this section has minimal public access. Three distinct alignments through this section create different opportunities and challenges.



Segment 3

This is the easternmost section of the trail beginning at "The Landing." Segment 3 has two primary alignment options that either traverse the rock bluff or wooded pasture to connect with the southern tip of Schaar's Bluff Gathering Center and the existing sections of the MRRT.



Key

- Route options
- Private property within park boundary
- Spring Lake Park Reserve boundary
- Potential park expansion

1,000 feet

N