

Byllesby Dam Evacuation Plan

An action plan for residents and visitors
downstream of Lake Byllesby in Cannon Falls,
Red Wing and northern Goodhue County.



READ AND KEEP THIS BROCHURE



Dakota County has owned the Byllesby Dam since 1969 and it has been safely operated for over a century. Responsible ownership means Dakota County, Goodhue County, Cannon Falls Police and other partners maintain a well-rehearsed emergency plan in the unlikely event of a structural failure that could cause rapid flooding downstream.

That plan includes the following direction for people in the potential downstream flood area in Cannon Falls, Red Wing and northern Goodhue County.

INSTRUCTIONS

You are receiving this information because you live in an area of Cannon Falls, Red Wing or northern Goodhue County townships that would need to be evacuated in the unlikely event of a structural failure of the Byllesby Dam that could cause rapid flooding downstream.

Listen and watch

Listen and watch for alerts and warnings indicating a failure at the dam.



Get out

Leave your home immediately with only people and pets.



Gather

Move away from the river and directly to higher ground.



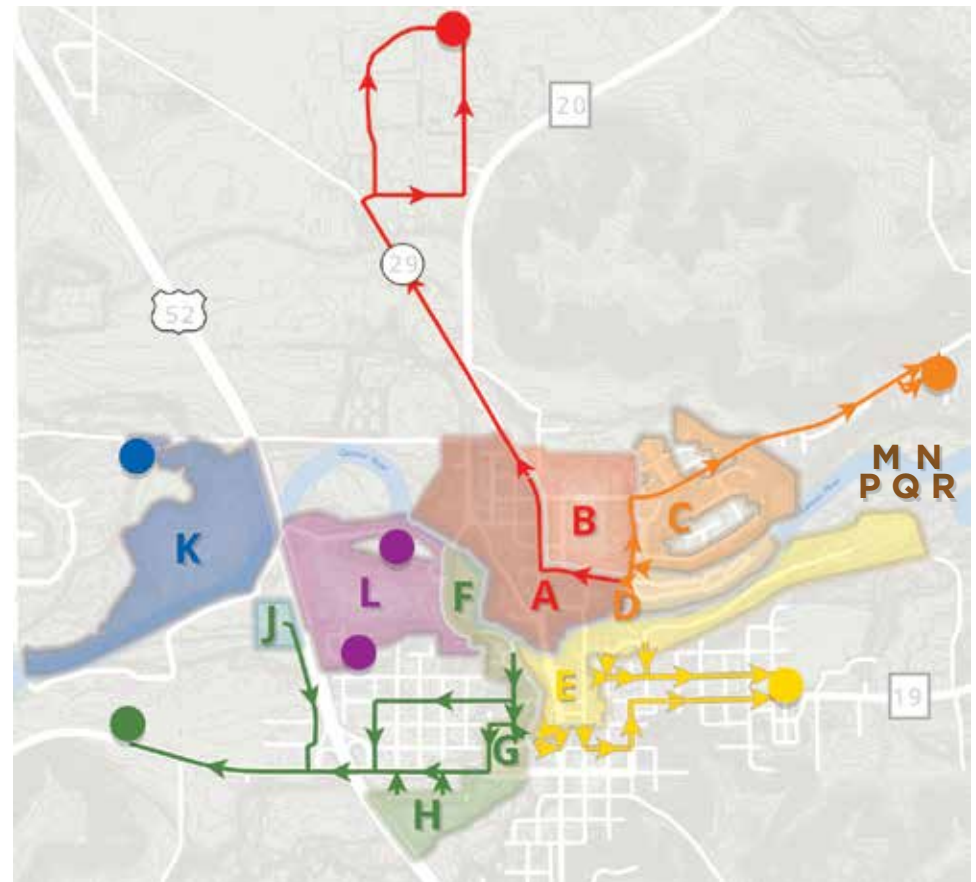
There are just minutes to evacuate, so only take people and pets with you. Once at an evacuation assembly location or higher ground, allow others to safely arrive and for emergency responders to pass through. Wait for additional instructions.

If you have an emergency during an evacuation related to the Byllesby Dam, call 911.

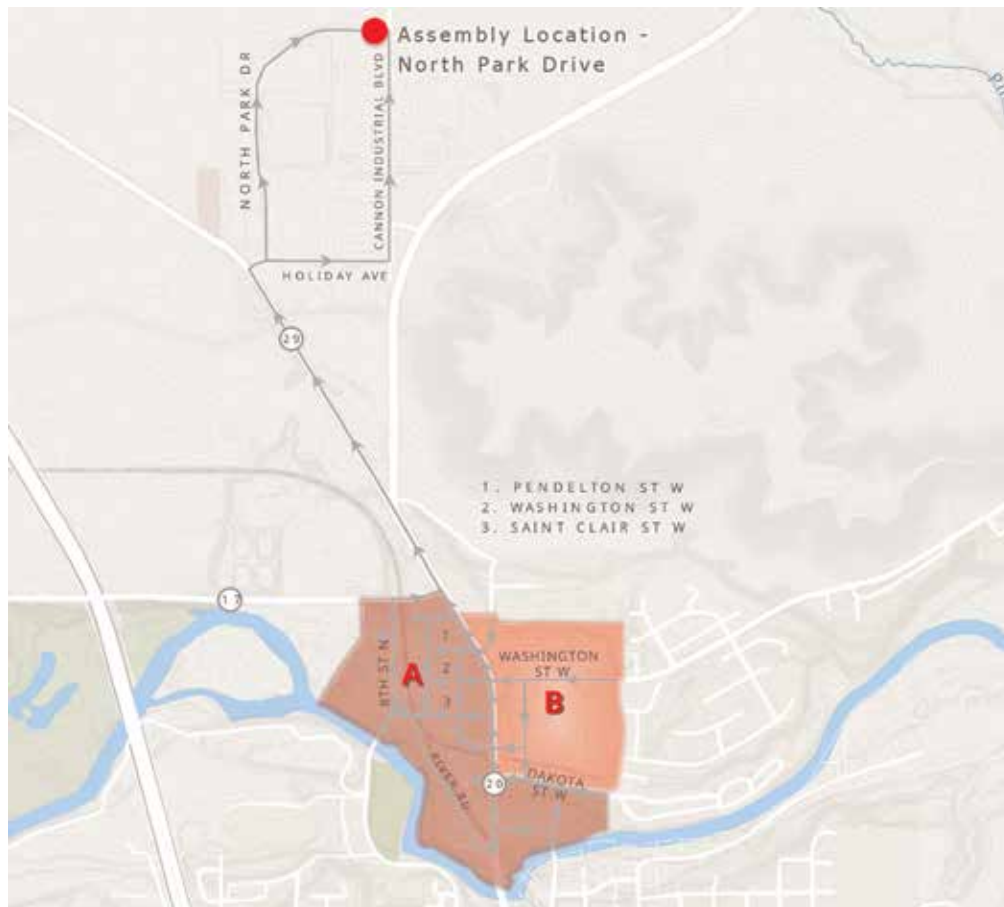
ZONE ASSEMBLY LOCATIONS

A B	North Park Drive	F G H J	Riverwood Community Church
C D	Sunflower Court	K	Cannon Golf Club
E	Cannon Falls High School	L	Higher ground
		M N P Q R	See detailed map on pages 10-11.

See following pages for detailed zone maps.



EVACUATION ZONES A & B



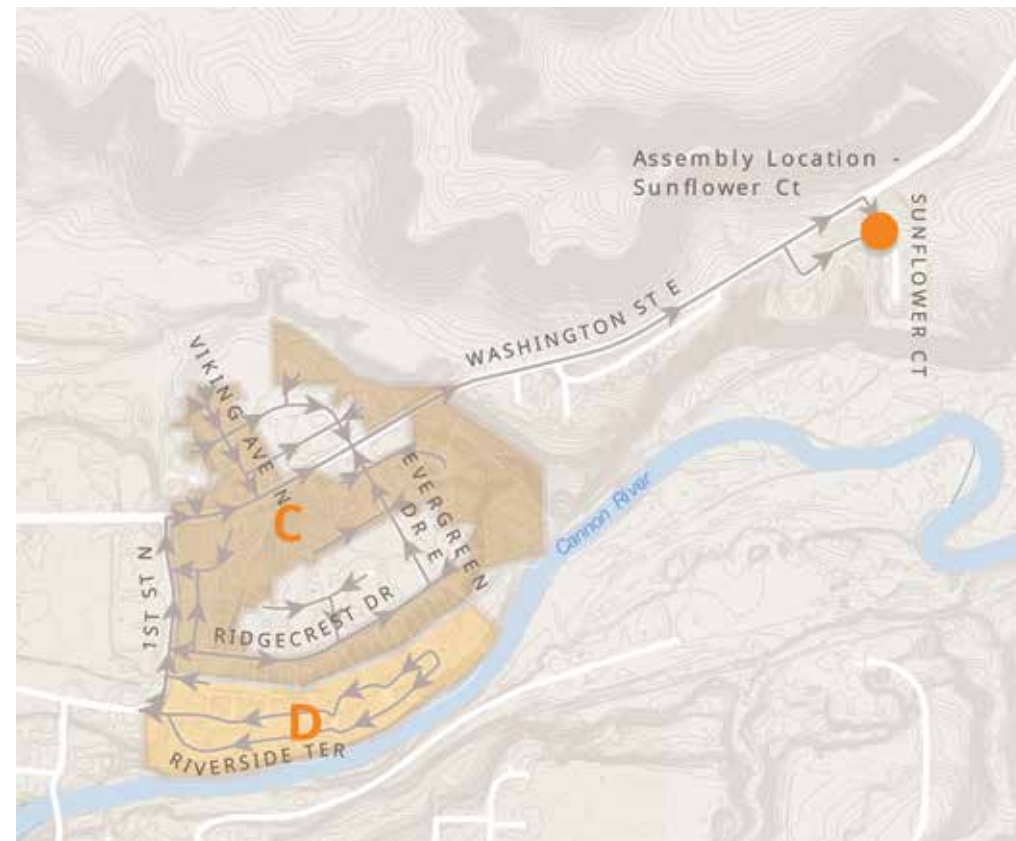
WHAT TO DO:

- In the event of a flood evacuation, Zones A and B will follow the **RED** evacuation route signs to the collection point located at **North Park Drive**.
- There are just minutes to evacuate, so only take people and pets with you.
- Once at an evacuation assembly location or higher ground, allow others to safely arrive and for emergency responders to pass through. Wait for additional instructions.



Please keep this brochure in a convenient location in your home. If you have an emergency during an evacuation, call 911.

EVACUATION ZONES C & D



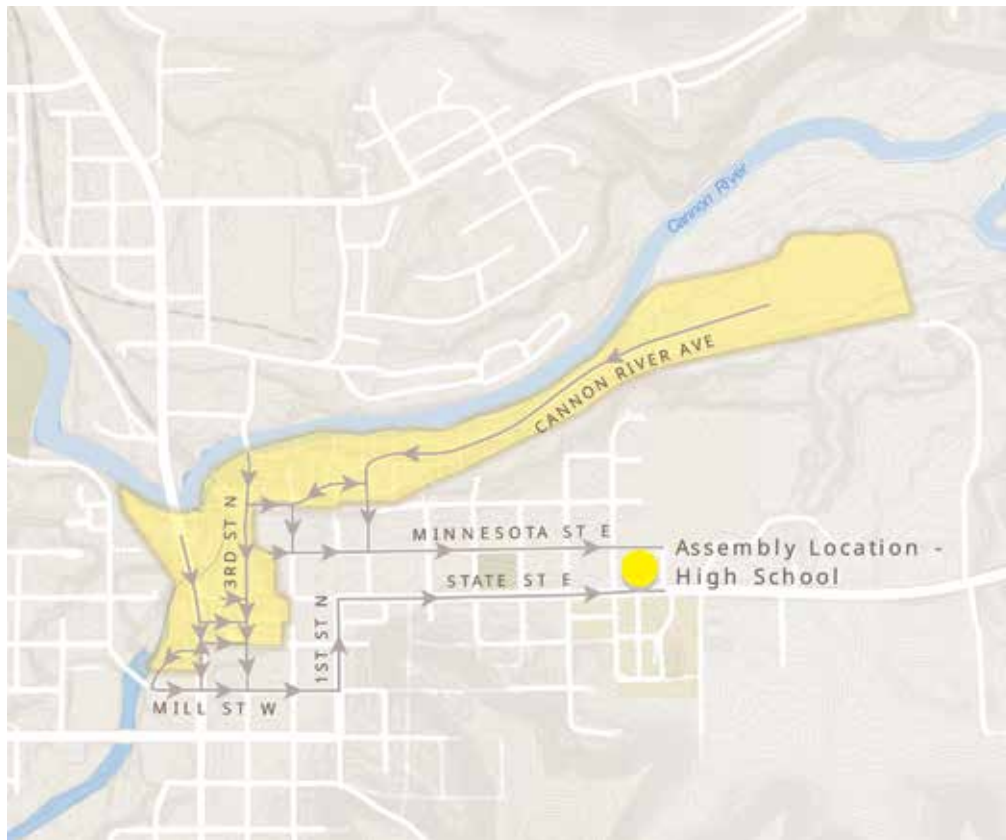
WHAT TO DO:

- In the event of a flood evacuation, Zones C and D will follow the **ORANGE** evacuation route signs to the collection point located at **Sunflower Court**.
- There are just minutes to evacuate, so only take people and pets with you.
- Once at an evacuation assembly location or higher ground, allow others to safely arrive and for emergency responders to pass through. Wait for additional instructions.



Please keep this brochure in a convenient location in your home. If you have an emergency during an evacuation, call 911.

EVACUATION ZONE E



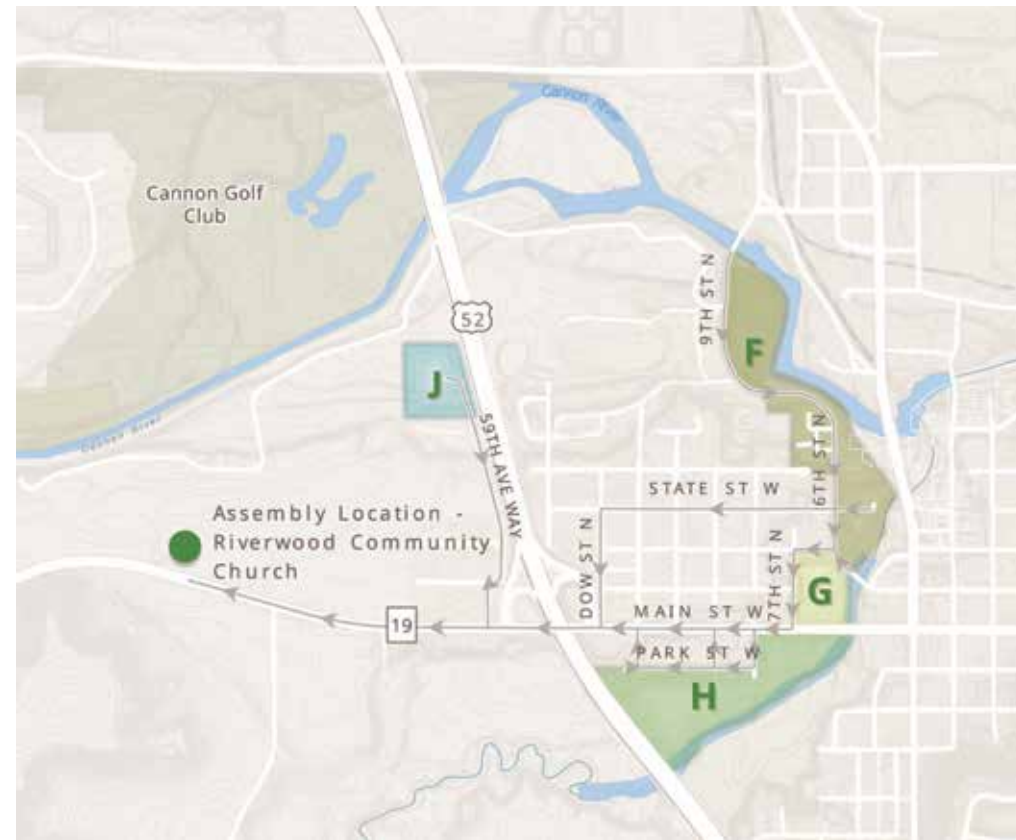
WHAT TO DO:

- In the event of a flood evacuation, Zone E will follow the **YELLOW** evacuation route signs to the collection point located at **Cannon Falls High School**.
- There are just minutes to evacuate, so only take people and pets with you.
- Once at an evacuation assembly location or higher ground, allow others to safely arrive and for emergency responders to pass through. Wait for additional instructions.



Please keep this brochure in a convenient location in your home. If you have an emergency during an evacuation, call 911.

EVACUATION ZONES F, G, H & J



WHAT TO DO:

- In the event of a flood evacuation, Zones F, G, H & J will follow the **GREEN** evacuation route signs to the collection point located at **Riverwood Community Church**.
- There are just minutes to evacuate, so only take people and pets with you.
- Once at an evacuation assembly location or higher ground, allow others to safely arrive and for emergency responders to pass through. Wait for additional instructions.



Please keep this brochure in a convenient location in your home. If you have an emergency during an evacuation, call 911.

EVACUATION ZONE K



WHAT TO DO:

- In the event of a flood evacuation, Zone K will follow the **BLUE** evacuation route signs to the collection point located at **Cannon Golf Club**.
- There are just minutes to evacuate, so only take people and pets with you.
- Once at an evacuation assembly location or higher ground, allow others to safely arrive and for emergency responders to pass through. Wait for additional instructions.



Please keep this brochure in a convenient location in your home. If you have an emergency during an evacuation, call 911.

EVACUATION ZONE L



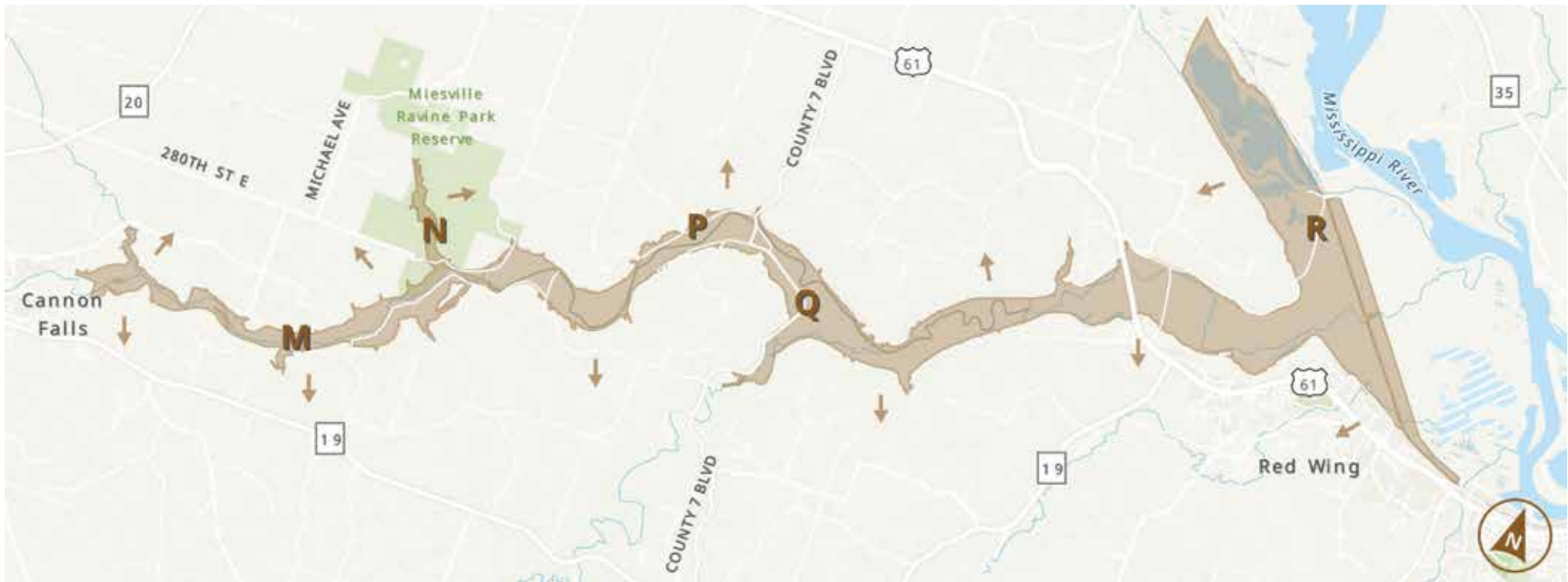
WHAT TO DO:

- In the event of a flood evacuation, Zone L will follow the **PURPLE** evacuation route signs to the collection points located at **higher ground**.
- There are just minutes to evacuate, so only take people and pets with you.
- Once at an evacuation assembly location or higher ground, allow others to safely arrive and for emergency responders to pass through. Wait for additional instructions.



Please keep this brochure in a convenient location in your home. If you have an emergency during an evacuation, call 911.

EVACUATION ZONES M, N, P, Q & R



WHAT TO DO:

- In the event of a flood evacuation, Zones M, N, P, Q and R will follow the **BROWN** evacuation route signs to the collection point located at **higher ground**.
- There are just minutes to evacuate, so only take people and pets with you.
- Once at higher ground, allow others to safely arrive and for emergency responders to pass through. Wait for additional instructions.



KEY EVACUATION ROUTES—HIGHER GROUND

M

(Cannon Falls Township)

- County Road 17
- 82nd Avenue Way
- County Road 40
- Sunset Trail
- 260th Street

N

(Welch Township)

- Orlando Avenue
- Welch Trail
- 130th Avenue
- 265th Street
- County Road 7

P

(City of Red Wing)

- Highway 61
- Cannondale Road
- Green Spring Road
- Collischan Road
- Cannon Bottom Road
- Tyler Road
- Cannon River Avenue
- Spring Creek Avenue

Q

(Vasa Township)

- Sunset Trail
- County Road 7
- Mount Hill Road

R

(City of Red Wing)

- Highway 61

Please keep this brochure in a convenient location in your home. If you have an emergency during an evacuation, call 911.

**For information about the
Byllesby Dam, contact:**

Dakota County: 952-891-7000

Additional information is available at
www.dakotacounty.us,
search *Byllesby Dam*
or scan this QR code.



Cannon Falls Police Department
918 River Road
Cannon Falls, MN 55009

Byllesby Dam Evacuation Plan



READ AND KEEP THIS BROCHURE