

DAKOTA COUNTY PLANNING COMMISSION

Dakota County Western Service Center – L139

14955 Galaxie Avenue

Apple Valley, MN 55124

Thursday, December 19, 2024

7:00 PM – 9:00 PM

Agenda

I. Call to Order

II. Pledge of Allegiance

III. Public Comments:

Anyone wishing to address the Planning Commission on an item not on the agenda may address the Planning Commission at this time (comments are limited to 5 minutes).

IV. Approval of the Agenda

V. Approval of Previous Meeting Minutes of Meeting Held on September 26, 2024

VI. Dakota County 2050 Vision for Parks and Natural Resources – Information (goals - units)
(Lil Leatham – Planning Office)

VII. Planning Manager Update and County Board Actions

- Authorized submitting County Solid Waste Management Plan to MPCA
- Reviewed and discussed the draft 2050 Park Vision Statement
- Authorized natural resource restoration at Spring Lake Park Reserve
- Approved the 2025 Planning Commission Work Plan

VIII. Upcoming Public Meetings – Community Outreach

County 50/County 5 Designs Open House	December 19, 2025, 4 p.m.-6 p.m. Lakeville Water Treatment Facility 18400 Ipava Ave., Lakeville
Crisis and Recover Center Ribbon Cutting	February 3, 2025, 9:00am Dakota County Northern Service Center
Miesville Ravine Park Reserve Improvements Open House	February 6, 2025, 4:30am-6:30am Cross of Christ Lutheran Church and Cannon River Lutheran Churches 24036 County 7 Blvd, Welch

IX. Topics for Next Meeting (Thursday, January 23, 2025 – 7 p.m., Western Service Center, L139)

- 2025 Work Plan

X. Planning Commissioner Announcements/Updates

XI. Adjourn



Meeting Minutes: Dakota County Planning Commission Advisory Committee Meeting Minutes-DRAFT

Date: 9/26/2024

Minutes prepared by Liz Hansen

Location: Western Service Center, Room 106

Attendance

Members Present

- Jerry Rich
- Amy Hunting
- Kelly Kausel
- Dennis Peine
- Lori Hansen
- Jill Smith
- Barry Graham
- Mike Cahn
- Steve Shurts
- James Guttman
- Tony Nelson

Member(s) Absent:

- Brady Folkestad

Dakota County staff members attending:

- Kurt Chatfield, Planning Manager
- Liz Hansen, Administrative Coordinator
- Georg Fischer, Physical Development Director
- Niki Geisler, Parks Director
- Nikki Stewart, Environmental Resources Director
- Lil Leatham, Principal Planner
- Renee Burman, Environmental Initiatives Supervisor
- Mary Jackson, Senior Planner
- Beth Landahl, Visitor Services Manager

Other attendees:

- Kate Lamers, Practice Lead, TLÂL-LI Collaborative

Meeting Called to Order

- Time: 7:00 p.m.
- By Chair, Commissioner Amy Hunting
- Commissioner Cahn arrived at 7:05 p.m.
- Commissioner Hansen arrived at 7:09 p.m.

Pledge of Allegiance

- The Planning Commission opened the meeting by reciting the Pledge of Allegiance.

Public Comments

- Comments/Notes: No audience member wished to address an item not on the agenda.

Approval of Agenda

Chair Hunting asked if there were any changes to the agenda.

The Planning Commission advised no changes, additions, or deletions.

MOTION: Commissioner Smith moved, seconded by Commissioner Nelson, approving the agenda. Voice vote: Ayes – 9 – Nays – 0 – Unanimously Approved

Approval of Minutes (from August 22, 2024)

Chair Hunting asked if there were any changes to the previous meeting's minutes.

The Planning Commission advised no changes, additions, or deletions.

MOTION: Commissioner Shurts moved, seconded by Commissioner Smith, approving the previous meeting's minutes. Voice vote: Ayes – 9 – Nays – 0 Abstain – 0 – Unanimously Approved

Dakota County Solid Waste Management Plan – Action (final plan)

Renee Burman, Environmental Initiatives Supervisor, Mary Jackson, Senior Planner, and Nikki Stewart, Environmental Resources Director, presented this issue and responded to questions.

The Planning Commission was briefed on the progress of the Solid Waste Management Plan. This included a recap of the project timeline, a review of the plan requirements, a discussion of public comments on the draft plan, and the revisions made based on the feedback received.

Questions and comments by the Commissioners, along with responses from staff (italics):

Could language be added to clearly indicate who will be responsible for activities Dakota County doesn't have authority over? *Staff responded that this could potentially be added to the introduction and appendix.*

Is there a challenge recovering aluminum because the industrial magnets don't retrieve it from unsorted waste? *Staff responded that this was a challenge.*

Inver Grove Heights is home to the Pine Bend Landfill, which is seeking approval for an expansion. The City is uncertain about what next steps to take. *Staff reported that they met with the City officials last fall, met with them again this spring, and had an in-person meeting to engage the City recycling staff. County staff mentioned the importance of the public comment period and emphasized that the cities are critical partners in implementing the Solid Waste Management Plan.*

Planning Commissioners discussed the challenge of managing plastics, and several suggested that the plan could have done more to address the issue of plastics. *Staff shared some positive news that has been passed in the legislature. The new legislation directs more sustainable packaging by 2032, focusing on compostable or recyclable materials. This initiative is a step towards making packaging more environmentally friendly and sustainable.*

Residents struggle with knowing what can and cannot be recycled. Waste haulers should place stickers on waste containers to remind residents what can be recycled. *Staff reported they are collaborating with cities and waste haulers to educate people on what can and can't be recycled. Haulers will be required to provide this information more frequently.*

It is good that the plan places an emphasis on recycling construction debris. It should also be a priority to recycle and reuse appliances, perhaps using an appliance reuse center or through a program or organization that specializes in appliance reuse.

It is going to be a challenge to implement curbside organics collection, especially in townhome communities. Many residents will not have space for a third or fourth waste bin. We should consider continuing to offer organics drop off and offer incentives for organics collection.

A comment was made that if organic waste could be placed in the yard waste bin, it would save on trucks and bins, as it's already being picked up. *Staff responded that there are problems with combining yard waste with organics, and unfortunately, this practice does not work.*

MOTION: Commissioner Rich moved, seconded by Commissioner Kausel, approving That the Dakota County Board of Commissioners Authorize Submittal of the 2024-2044 Solid Waste Management Plan to the Minnesota Pollution Control Agency for Review and Approval. Voice vote: Ayes – 11 – Nays – 0 Abstain – 0 – Approved

Dakota County 2050 Vision for Parks and Natural Resources – Information (visioning)

Lil Leahtam, Principal Planner, and Kate Lamers, Practice Lead, TLÂL-LI Collaborative, presented this item and responded to questions from the Planning Commissioners.

The Planning Commission received an update on the Interim Report on engagement efforts, a Presentation of the 2050 Vision Framework, and a discussion of the Mission, Vision, Core Values, and Goals (future discussion).

Questions and comments by the Commissioners, along with responses from staff (*italics*):

The Planning Commission discussed the draft vision and many members expressed support for the draft vision. They liked that it was concise and memorable.

When reviewing the draft values, several members discussed the term “heal” and commented that it may be too negative and that there may be another term that could be used.

The Planning Commission discussed the County Board’s interest in promoting economic development. Public-private partnerships such as Sea Salt are part of Minneapolis parks and could be considered for the Dakota County park system. *Staff responded that economic development has been discussed as part of the public engagement process. Another example of economic development may be the increased value of homes and businesses next to greenways.*

The Planning Commission discussed the recent public/private partnership at Antlers Park in Lakeville. While several members appreciated the benefits of the partnership, there were a number of comments that Antlers Park has too much development and not enough natural land to be a good example of a regional park that provides nature based recreation.

A Planning Commissioner suggested that the County acknowledge the importance and value of building a volunteer program to support and improve the park system. The County’s volunteer program has grown dramatically over the last few years, and thousands of hours of volunteer time have been used to restore natural areas and improve park programs. This approach should be reflected somewhere in the values.

The Planning Commission discussed how the park system needs to adapt to changing demographics. There are several important trends, such as diversity and the aging of Dakota County’s population. It is important to understand how parks are important to each of these groups. In addition, some groups of people have different needs for parks, such as Alzheimer’s support organizations, or adult foster families. Many of these groups need accessibility, but they also benefit from relaxation and well-being from a peaceful and soothing environment.

The Three Rivers Park District offers more programs than Dakota County and aggressively advertises what programs are available. Dakota County has some excellent facilities, such as the archery range at Spring Lake Park Reserve, but doesn’t advertise to the same extent as Three Rivers Park District. *Staff responded that Dakota County does advertise programs and facilities but not as much as Three Rivers Park District. Dakota County does*

have a marketing plan. How much to advertise County facilities and programs is a topic that may need further discussion.

A suggestion was made that staff should intercept people using existing parks to learn about what the needs and wants of visitors are at each park. One Planning Commissioner spoke with visitors using Miesville Ravine Park Reserve and heard feedback that a bathroom is needed at the main trailhead. The input that is gathered by staff should be summarized as part of this 2050 Parks Vision process.

Planning Commissioners discussed the challenge of providing facilities for popular large events, without overdeveloping parking areas for all the other days of the year when events are not held. *Staff responded that this can be a challenge and that the County uses a variety of strategies, such as allowing parking along the entrance drive at Whitetail Woods for large events, partnerships with churches to use their parking lots if they are nearby, and overflow parking in mowed grass fields in some instances.*

Staff concluded the 2050 Park Vision discussion with the Planning Commission by providing an update on the next steps in the planning process.

Planning Manager Update and County Board Actions

Kurt Chatfield informed the Planning Commission that it is the recommendation of the County Manager to distribute the Planning Commission's minutes to the County Board via the Physical Development Director's update to the Physical Development Committee. This is an administrative change that will streamline the process of updating the County Board on the Planning Commission's meetings and recommendations.

Comments/Notes: Kurt Chatfield, Planning Manager, provided the Planning Commission with an update on the following County Board Actions:

- Approved schematic design for Spring Lake Park Reserve Trailhead at Fischer Avenue
- Provided comments on Metropolitan Council's draft Imagine 2050 Plan
- Recommended renaming of the Lebanon-Mendota Greenway
- Discussed the role of transit in Dakota County

Upcoming Public Meetings – Community Outreach

Comments/Notes: Kurt Chatfield, Planning Manager, provided the Planning Commission with an update on the following upcoming public meetings and community outreach:

2050 Parks Vision Plan Pop up	September 22, Noon-4:00pm Lebanon Hills Regional Park Visitor Center
Veterans Memorial Greenway Pop up at Farmers Market	September 29, 10:00am-noon Veterans Memorial Community Center, Inver Grove Heights
County Highway 73 (Babcock Trail) Open House	October 1, 4:30pm-6:30pm Veterans Memorial Community Center, Inver Grove Heights
County Highway 26 (70 th Street) Open House	October 8, 4:30pm-6:00pm and 6:00pm-7:30pm Veterans Memorial Community Center, Inver Grove Heights

Topics for next meeting (Thursday, October 24, 2024)

Kurt Chatfield, Planning Manager, provided an overview of next month's meeting topics:

- None at this time. The October meeting is likely to be canceled.

Planning Commissioner Announcements/Updates:

No updates or announcements were given.

Adjournment

Chair Hunting asked for a motion to adjourn.

MOTION: Commissioner Graham moved, seconded by Commissioner Smith, to adjourn the meeting at 8:31 p.m. Voice Vote: Ayes – 11 – Nays – 0 – Unanimously Approved.

**Next Meeting: Thursday, October 24, 2024, at 7:00 p.m. (if necessary),
Dakota County Western Service Center, Apple Valley**

Respectfully submitted,

Liz Hansen, Administrative Coordinator

DAKOTA COUNTY PLANNING COMMISSION

DATE: 12/19/2024

AGENDA ITEM: Parks, Greenway, and Natural Systems 2050 Vision Plan draft goals and potential new parks and greenways

PREPARED BY: LIL LEATHAM

PURPOSE

Provide Planning Commission:

1. *Opportunity to provide feedback on draft goals*
2. *Opportunity to provide feedback on strategy for new park and greenway service areas and candidate sites.*

BACKGROUND

The project team is in the process of developing Parks, Greenways, and Natural Systems 2050 Vision Plan document.

In September, the Planning Commission reviewed Phase I Community Engagement and provided feedback on the draft vision and values. Building on that work, draft goals have been developed as well as preliminary recommendations for new park and greenway search areas and candidate sites for Planning Commission consideration and feedback. Goals for the new facilities will be revised based on Planning Commission and Physical Development Committee feedback prior to including in the draft plan document. Strategies that support the goals are in development and will be included in the draft document.

It is anticipated the Planning Commission will review the Draft 2050 Vision Plan Document in the first quarter 2025 and that the plan will be released for public review in Spring 2025.

ATTACHMENTS

1. *Draft 2050 goals (Focus review on goals. Mission, vision, and values are included as background and context and were discussed in September)*
2. *Draft park, greenway, and land conservation classification*
3. *Draft park and greenway search areas and candidate sites*

QUESTIONS

The following questions are intended to help assist in review of the packet materials.

1. *Are the draft recommended goals complete and reflective of needs and direction provided by the community, planning commission, county board in the analysis phase?*
2. *Are you supportive of the draft park search areas? Do you have suggestions?*
2. *Are you supportive of the draft greenway search areas and a county role in facilitating community trail loops? Do you have suggestions?*



DAKOTA COUNTY PARKS

2050 VISION PLAN

December 2024 Draft Vision Framework

Dakota
forever wild
PARKS

TUĀL-LI
collaborative



VISION FRAMEWORK

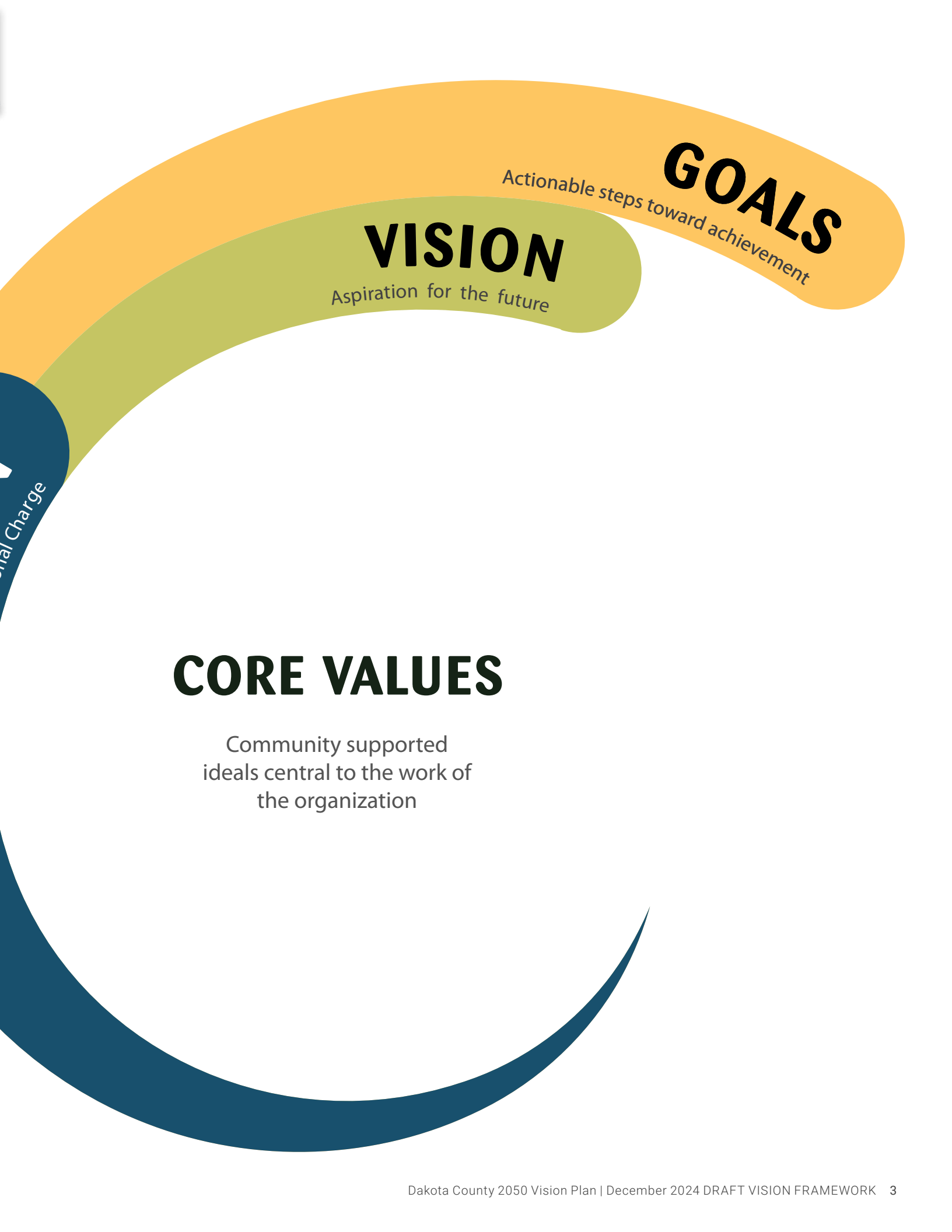
CREATING A VISION FRAMEWORK

Support the **organizational mission**
by expressing a **vision** for the future,
formulating the **goals** to achieve it,
and articulating the **core values**,
by which the mission will be conducted.

It is around these four elements (mission, vision, goals, and values) that the Vision Framework is constructed. The Vision Framework is intended to establish the basis for both the 2050 Vision Plan itself and the work of the organization in decades to come.

The following pages state the recommendation for each element and provide basic background on the topic.

MISSION
Organization





Core Values are the community-supported ideals central to the work of the organization. They are the primary influencer in future direction and operational conduct.

Community values were referenced in the 2030 Park System Plan but not used in as direct a way as recommended with this process. Recommended value statements rely heavily on input received from community, staff, and leadership engagement.

recommended **CORE VALUES**

1. To **CONNECT** people to each other and the natural world, fostering a sense of belonging for all.
2. To **PRESERVE** and protect natural spaces, ensuring a resilient and healthy environment for future generations.
3. To **INSPIRE** wellbeing, wonder, adventure, and learning through engaging and inclusive outdoor experiences.
4. To **NURTURE** and heal the vital relationship between people and nature.
5. To **CELEBRATE** the past, present, and future of our vibrant and richly diverse communities.





The Mission is what the organization is charged with carrying out.

Dakota County Parks' current mission statement is "Provide high quality recreational and educational opportunities in harmony with natural resource preservation and stewardship. In a separate and parallel process, the Parks Department will be updating their organizational mission to align with the updated values and vision.

existing **MISSION** statement

*Provide high quality recreational and educational opportunities
in harmony with natural resource preservation and
stewardship.*





The Vision statement is an aspiration for future state of being.

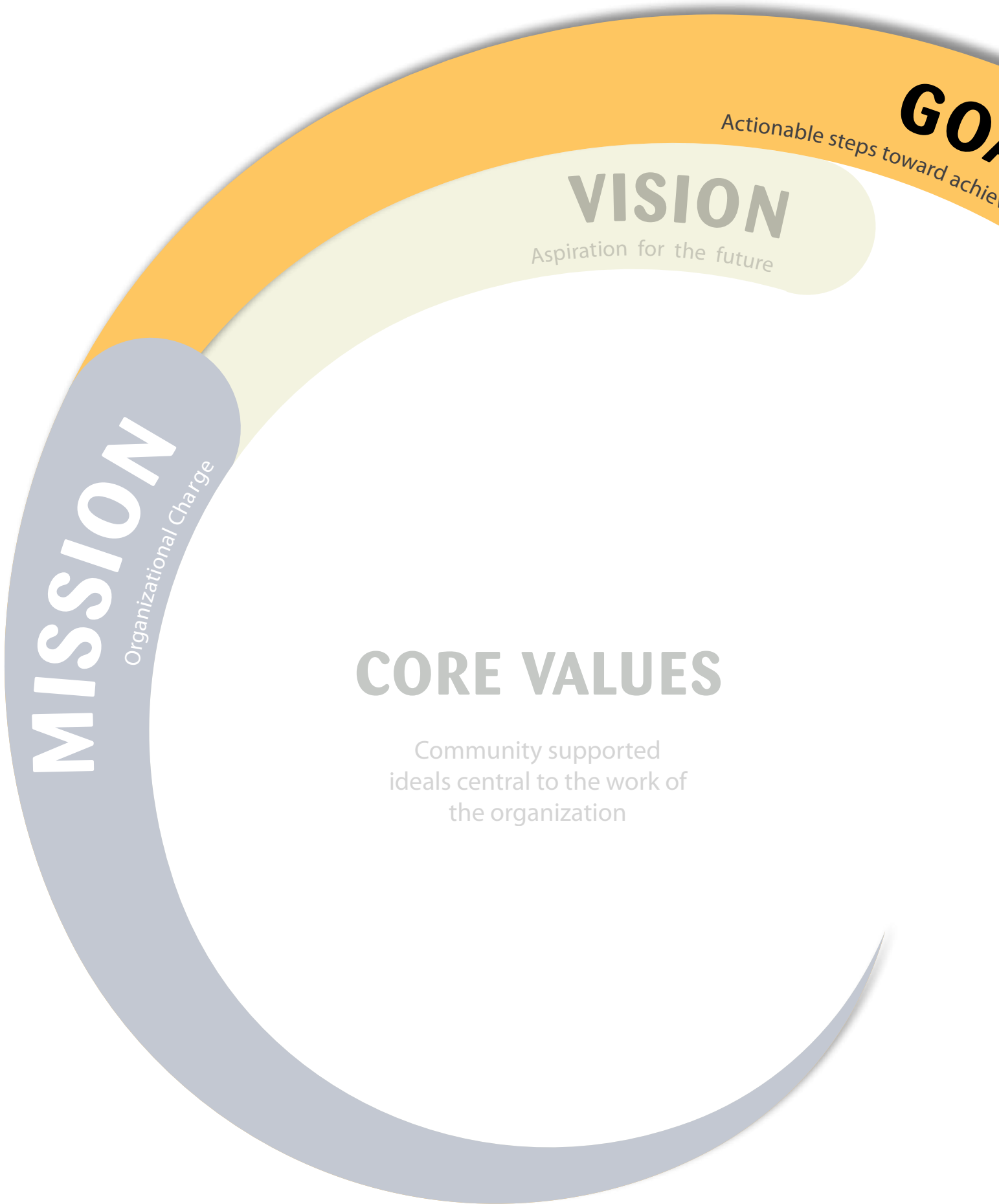
Dakota County Parks' current vision statement is "Great Places, Protected Places, Connected Places.

Modification to the current statement is recommended to better reflect the breadth of Dakota County Parks' work. An example is that it's difficult to place outdoor education and programming in the current statement.

recommended **VISION** statement

Dakota County Parks and Natural Lands:

Nature Protected, Community Reflected, All Are Connected.



recommended GOALS

Dakota County Parks will:

1. Nurture the reciprocal relationship between people and nature.
2. Cultivate belonging for all by engaging and serving the community, with an emphasis on those that are under-represented in the outdoors.
3. Provide core services and amenities at a level where people feel safe, have a positive experience, and become return visitors.
4. Create dynamic spaces with signature experiences.
5. Expand environmental stewardship through outdoor programs, learning, and volunteerism.
6. Offer opportunities to improve physical, mental, and spiritual health.
7. Strengthen partnerships with Tribal Nations and Indigenous communities to protect the lands and lifeways of cultural significance.
8. Locate new park units where they are available and accessible to all.
9. Lead on ecological health and climate resilience.
10. Elevate cultural richness through nature-based arts, historic preservation, and interpretation.
11. Seek values-based and mission-driven partnerships.
12. Care for the system through sustainable and innovative funding.
13. Develop a diverse and thriving workforce that represents the communities we serve.
14. Support flourishing local economies. Investment in people inspires energy and creativity that enriches the park system.

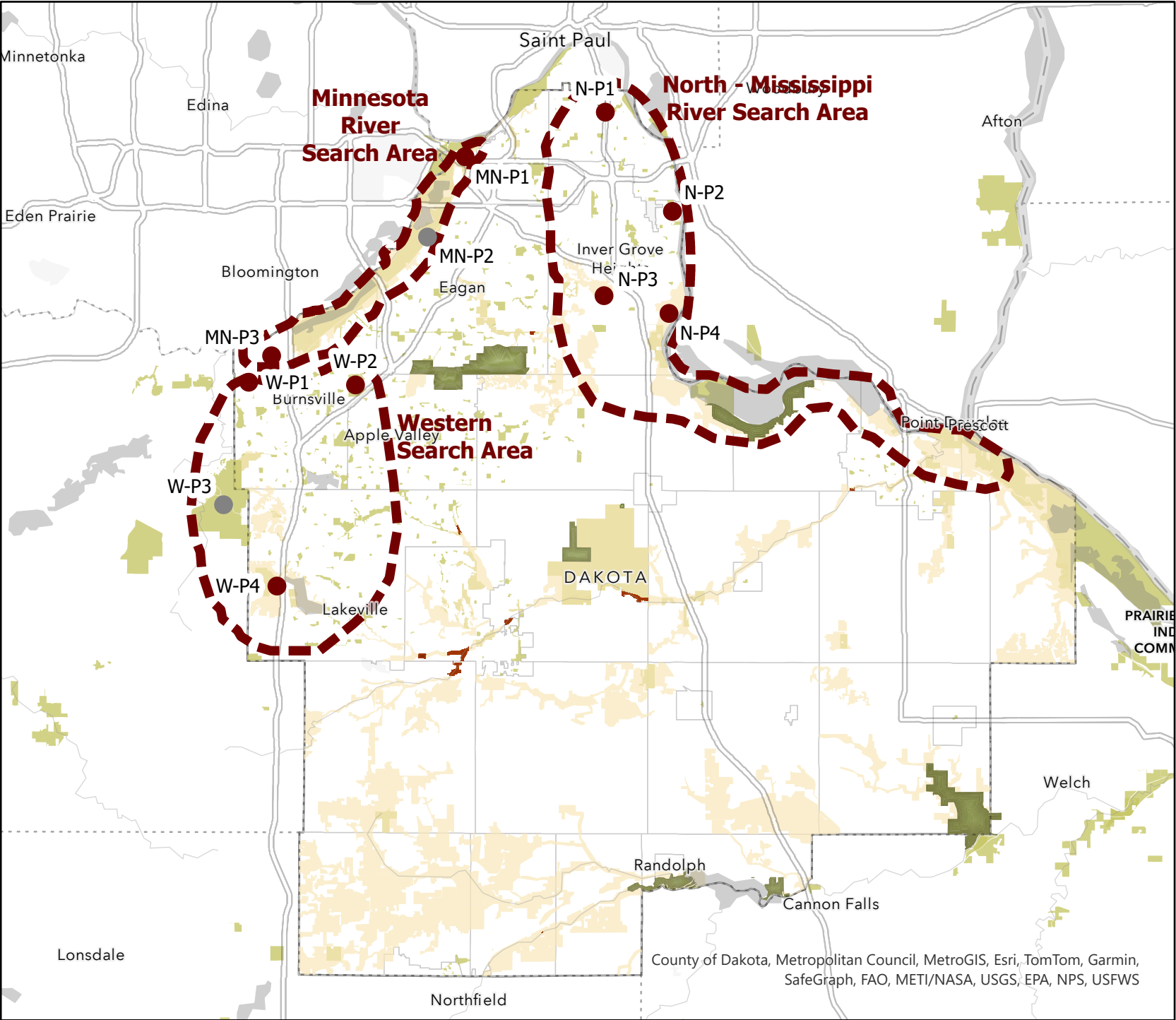
DRAFT
Park, Greenway, and Land Conservation Classification
December 9, 2024

Classification	Parks							Greenways and Trails			Land Conservation	Private Community Recreation or Conservation Asset <i>*NEW*</i>
	County Park	County Park Conservation Area	Regional Park	Regional Park Reserve	Regional Bridging Facility and Partnership <i>*NEW*</i>	Regional Special Recreation Feature <i>*NEW*</i>	Regional Cultural Landscape and Open Space Classification <i>*NEW*</i>	Regional Greenway	Community Greenway Loop <i>*NEW*</i>	Greenway Recreation Enhancement Partnership <i>*NEW*</i>	Conservation Focus Area	
Purpose	Area of natural quality for outdoor recreation such as walking, viewing, sitting, picnicking; could have some field and court games and specialized activities.	Area of natural quality such as watercourses and wetlands that are preserved for environmental or aesthetic benefits to the community and ability to provide public access to natural heritage, nature-based recreation or significant viewsheds.	Area of natural or ornamental quality for nature-oriented recreation such as picnicking, boating, fishing, swimming, camping, and trail uses.	Protecting, restoring, and providing access to large areas of significant and unique natural resources. Area of natural quality for nature-oriented outdoor recreation such as viewing and studying nature, wildlife habitat, swimming, picnicking, hiking, boating, camping, and trail uses.	Attract and introduce new park visitors to nature. Increasing convenience for community groups with limited connection to nature. Clear and unique purpose, customized to specific community or communities.	Area that preserves, maintains, and provides specialized or single-purpose recreational activities, such as nature center, marina, arboretum, display gardens, downhill ski area, sites of historic or archeological significance, and bridging facilities.	NEW MET COUNCIL CLASSIFICATION BEING DEVELOPED Recognizes a range of culturally important areas within the Regional Parks and Trails System. Includes high-quality natural areas as well as areas with restoration potential. and recognizes the importance of protecting natural areas to adapt and mitigate climate change.	Linear corridor that combines water quality, recreation, habitat, transportation, interpretation.	Recreational in nature, walking and biking scale loops close to where people live. Partnership with cities: City and County cost share on construction and reconstruction.	Enhanced greenway access, support nature-based recreation close to where people live.	Land protection priorities based on the combination of natural features, connectivity, hydrology, and land ownership with renewed emphasis on water. Combination of public and conservation easements on private land (voluntary). Natural resources that merit preservation and that would be negatively affected by development.	Land owed/operated by private or public entities that has community value. Dakota County may consider evaluating sites nearing the end of their operational lifespan and working with stakeholders—landowners, local governments, and community members—to transition these spaces into public ownership or conservancy partnerships. This approach can serve multiple goals: <div>1. Land Conservation, 2. Public Access and Recreation, 3. Historical Preservation.</div>
Service Area	5-minute drive.	Where resource occurs	10 min drive.	10 min drive.	Proximity to population served.	Regional-(metropolitan area).	Where resource occurs.	Adjacent to natural resources and/or connect components of the regional system.	City.	Along regional greenway.	Where resource occurs.	Where resource occurs.
Size	25-200 acres	Based on resources present	200-500 acres typically (100 acres min.)	1,000+ acres	Varies. Can be within a regional park or a stand-alone facility. May include a mobile element.	Appropriate to feature.	Based on resources present.	Multiple communities.	Up to 10 miles.	Within existing city parks, size varies.	As identified in the land conservation plan or restorable wetlands, locally significant open space, native seed bank, surface water corridor.	Based on resources present.

DRAFT
Park, Greenway, and Land Conservation Classification
December 9, 2024

Classification	Parks							Greenways and Trails			Land Conservation	Private Community Recreation or Conservation Asset <i>*NEW*</i>
	County Park	County Park Conservation Area	Regional Park	Regional Park Reserve	Regional Bridging Facility and Partnership <i>*NEW*</i>	Regional Special Recreation Feature <i>*NEW*</i>	Regional Cultural Landscape and Open Space Classification <i>*NEW*</i>	Regional Greenway	Community Greenway Loop <i>*NEW*</i>	Greenway Recreation Enhancement Partnership <i>*NEW*</i>	Conservation Focus Area	
Location	Proximity to community and/or where resource allows.	Within a Conservation Focus Area, or along existing or future greenway, or areas of exceptional natural or cultural features where preservation and protection is warranted.	Natural setting contiguous to water preferred.	Where natural resource occurs.	Connected to park, natural area or greenway. 10 min walk bike from priority population, within park or greenway search area (as defined by the vision plan).	Where most advantageous for the special recreation feature and the overall park system.	Where natural resource occurs.	Independent, wide corridor with opportunities to improve and protect natural and cultural resources and trail.	Up to 10 trail miles creating a loop anchored by a regional greenway. Where feasible, 50% of trail experience away from roads. Priority for lake loop trails.	In parks and open space that is along greenway. Priority for lake loop trails and recreation at trailheads.	Preliminary Conservation Focus Areas identified in the 2020 Land Conservation Plan and where resource occurs.	Where resource occurs.
Development	Basic, popular, signature as defined by park long-range plan. May include active recreation and specialized uses.	At a minimum: greenway, boundary signage, parking, basic trail, kiosk, access to defining feature. Additional facilities or service provision as guided by a long-range plan.	Basic, popular, signature as defined by park long-range plan.	Basic, popular, signature as defined by park long-range plan.	Basic, popular, may have specialized features related to outdoor education as identified in a long-range plan.	As defined by long-range plan.	Standards are being developed by Metropolitan Council and Implementing Agencies as part of the 2050 Regional Parks Policy Plan.	ADA accessible, paved trail suitable for walking and biking uses, wayfinding, trailhead facilities. Other trail-based recreation as defined by long-range plan.	ADA accessible, paved trail suitable for walking and biking uses, wayfinding.	Collaboration with cities on nature-based recreation features such as boating access, fishing piers, nature play, mountain biking, foraging forests/gardens, community gardens, walking trail loops, sledding, x-country skiing, camping, picnicking, interpretation, art.	Not applicable.	Site specific.
Examples	Thompson County Park, Dakota Woods Dog Park	9 existing sites	Lake Byllesby, Lebanon Hills	Miesville Ravine, Spring Lake Park Reserve	Thompson Park Activity Center	Silverwood Park (Three Rivers Park District)	Classification in development	Minnesota River, River to River Greenway	Hastings 10-mile loop (city)	Cobblestone lake loop (city), East Lake park loop (city)	As Identified in the 2020 Dakota County Land Conservation Plan	Buck Hill Dodge Nature Center Golf Courses Mt. Olivet Retreat Center

Search Areas - Regional Parks, Special Recreation Features, and Bridging Facilities



Legend

Park Search Area

New Park Candidate Site

New Partnership Candidate Site

Existing Parks and Open Space

Dakota County Regional Parks, Regional Park Reserves, and County Parks

County Park Conservation Areas

Other Park Land

Conservation Focus Areas

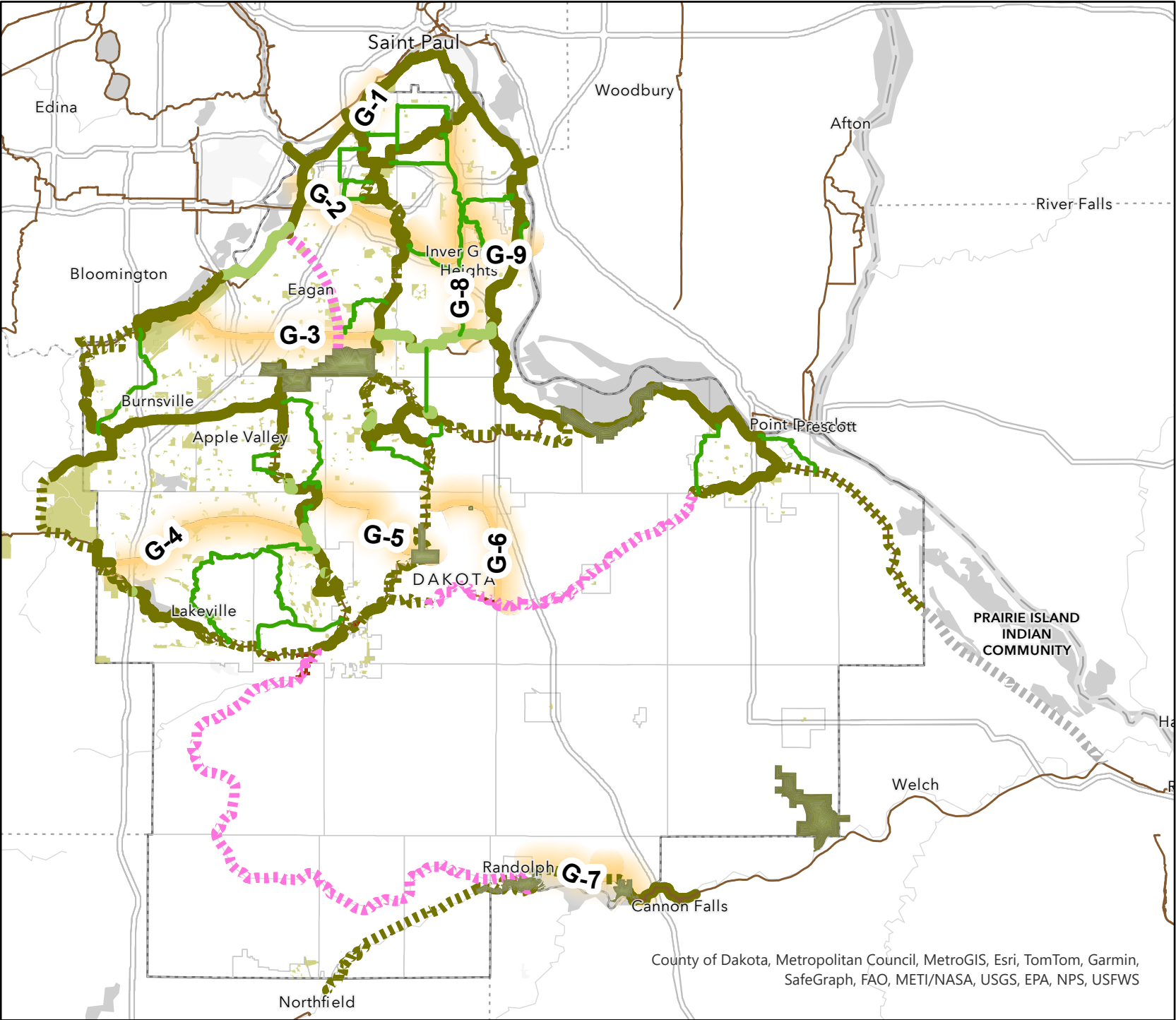
DRAFT FOR DISCUSSION PURPOSE ONLY

12/10/2024



0 1 2 3 Miles

Potential New Greenway Search Areas and Community Trail Loop Concept



Legend
Potential New Greenways and Trails

New Greenway Search Corridor

Potential Community Greenway Loops

Existing and Planned Greenways

Open

Programmed

Planned

Proposed

Existing Park, Trails and Open Space

Dakota County Regional Parks, Regional Park Reserves, and County Parks

County Park Conservation Areas

Other Park Land

Metro Regional Trails and State Trails

DRAFT FOR DISCUSSION PURPOSE ONLY
12/10/2024

0 1 2 3 Miles

County of Dakota, Metropolitan Council, MetroGIS, Esri, TomTom, Garmin, SafeGraph, FAO, METI/NASA, USGS, EPA, NPS, USFWS

DISCUSSION DRAFT 12/10/24– New Park Search Areas, Candidate Sites, and Greenway Search Areas

	Area <i>corresponds to ID on maps</i>	Name	Location	Partnership Opportunity	Suitability/Feasibility	Recommendation
	Regional Park or Partnership Candidates					
North Mississippi River Search Area	N -P1	Thompson/Kaposia/Kaposia Landing	West St. Paul, South St. Paul	South St. Paul	<ul style="list-style-type: none">• All land in County/City ownership.• Combined unit meets size minimum of 100 acres. Lakes and streams present.• Serves underrepresented populations in northern Dakota County.	<ul style="list-style-type: none">• North - Mississippi River Search Area, regional park candidate site for further exploration. Explore Regional Park Status with Met Council and South St. Paul.• Explore Bridging Facility Status for Thompson Park Center with Met Council, West St. Paul, and ISD 197.
	N-P2	Swing Bridge Marina	Inver Grove Heights	Inver Grove Heights (Heritage Park), MN DNR boat launch, NPS	<ul style="list-style-type: none">• Some land in County/City ownership, some private.• Has potential to meet regional park desired 200-acre size. Mississippi River frontage.• Public motorized boat landing service gap.• High visibility, easy vehicle access.	<ul style="list-style-type: none">• North - Mississippi River Search Area, regional park or regional special use candidate site for further exploration.
	N-P3	Marcott Lakes Nature Center	Inver Grove Heights	Dodge Nature Center	<ul style="list-style-type: none">• Land in private ownership, some protected by conservation easements.• Could meet 200 acres desired size for regional park.• Lakes present.• Within Conservation Focus Area.• Serves underrepresented populations in northern Dakota County.	<ul style="list-style-type: none">• North - Mississippi River Search Area, regional park or regional special use candidate site for further exploration.• Feasibility study needed.
	N-P4	Pine Bend Bluffs – River Lake Area	Inver Grove Heights	NPS, private marina	<ul style="list-style-type: none">• Some land in public ownership, some private.• Mississippi river frontage.• Public motorized boat landing service gap.• Somewhat remote.• Within Conservation Focus Area.	<ul style="list-style-type: none">• North - Mississippi River Search Area, regional park or regional special use candidate site for further exploration.
Minnesota River Search Area	MN- P1	MN River Bluffs – Ft Snelling	Mendota Heights, Mendota	Fort Snelling State Park, Native American Leaders, Mendota Heights, Mendota	<ul style="list-style-type: none">• Land in public ownership.• Unique opportunity to develop a cultural district including both Indigenous and Euro-American stories.• Potential to improve recreation and natural resource management on Fort Snelling State Park land to improve nature-based recreation for northern Dakota County.• Celebrates Minnesota River.• Within Conservation Focus Area.	<ul style="list-style-type: none">• Minnesota River Search Area, regional special use candidate site or partnership project for further exploration.
	MN-P2	US Fish and Wildlife Refuge	Burnsville	US Fish and Wildlife Refuge	<ul style="list-style-type: none">• Land in public ownership.• Potential to improve recreation and natural resource management on US Fish and Wildlife land to improve nature-based recreation for western Dakota County.	<ul style="list-style-type: none">• Minnesota River Search Area, regional special use candidate site or partnership project for further exploration.
	MN-P2	Minnesota River Quadrant Quarry Lake (long-range)	Burnsville	Gravel mining companies, US Fish and Wildlife Service, Burnsville	<ul style="list-style-type: none">• Land in private ownership designated for redevelopment.• Minnesota River Frontage.• Opportunity to establish new park with gravel lake along with reclamation and redevelopment.• Consistent with City of Burnsville plans for area.• Within Conservation Focus Area.	<ul style="list-style-type: none">• Minnesota River Search Area, regional park candidate site (long-term).
Western Search Area	W-P1	Rudy Kramer Nature Preserve	Burnsville	Burnsville	<ul style="list-style-type: none">• Land in City ownership.• On Lake Marion Greenway.• Serves underrepresented population in Burnsville.• Current mix of sports and nature has ability to introduce more people to nature.	<ul style="list-style-type: none">• Western search area, bridging facility or partnership candidate site for further exploration.
	W-P2	Terrace Oaks Park	Burnsville	Burnsville	<ul style="list-style-type: none">• Land in City ownership.• Serves underrepresented population in Burnsville.• Meets 200-acre threshold for regional park.• Does not benefit from lakes or rivers. Terrace Oaks East and West are 240 acres.	<ul style="list-style-type: none">• Western search area, bridging facility or partnership candidate site for further exploration.

Greenway Search Corridors	Area <i>corresponds to ID on maps</i>	Name	Location	Partnership Opportunity	Suitability/Feasibility	Recommendation
	W-P3	Murphy Hanrehan Regional Park	Scott County	Three Rivers Park District	<ul style="list-style-type: none"> Existing regional park reserve. Has potential to serve Burnsville and Lakeville better if it had additional popular regional park facilities like picnicking. 	<ul style="list-style-type: none"> Western search area, explore partnership with Three Rivers Park District to add facilities that better serve area residents.
	W-P4	Ritter Farm Area – Lake Marion Park	Lakeville	Lakeville	<ul style="list-style-type: none"> Some land in City ownership, some private. Combined area of Ritter Farm, lakefront on Bury property, and Casperson Park would include the mix of recreation and natural resources found in regional parks. Meets 200-acre threshold for regional park. Lakefront. Within Conservation Focus Area. 	<ul style="list-style-type: none"> Western search area, regional park or partnership candidate site for further exploration.
	Greenway Corridor Candidates					
	G-1	Lilydale-St. Paul	Lilydale		<ul style="list-style-type: none"> Feasibility Study needed. Connects Cherokee Regional Park and trail in St. Paul. Mile and a half gap from Highway 55 bridge to Cherokee Regional Park on top of bluff. 	<ul style="list-style-type: none"> Propose search corridor.
	G-2	Soo Line (feasibility study alignment)	Eagan, Mendota Heights	Eagan, Mendota Heights, MN Vikings	<ul style="list-style-type: none"> Feasibility study complete. Addresses freeway barriers. 3.5 miles. Serves northern Eagan residential growth. 	<ul style="list-style-type: none"> Propose search corridor.
	G -3	Highline Trail	Eagan, Burnsville	Eagan	<ul style="list-style-type: none"> Six-mile extension of Veteran’s Memorial Greenway to the east. Facility 90% in place. Feasibility study for Burnsville segment needed. 	<ul style="list-style-type: none"> Propose search corridor.
	G-4	Farmington-Lakeville	Lakeville, Farmington	Farmington, Lakeville	<ul style="list-style-type: none"> Feasibility study needed. Most land in private ownership. Seven mile east-west connection between North Creek and Lake Marion Greenways. Potential to establish corridor in advance of/along with development. 	<ul style="list-style-type: none"> Propose search corridor.
	G-5	Empire Greenway – mining lakes (long-range)	Empire	Gravel mining companies	<ul style="list-style-type: none"> Feasibility study needed. Most land in private ownership. Establishes greenway through mining areas prior to re-development for approximately four miles, Opportunity to create greenway and lake loop trails along with reclamation activities post mining. 	<ul style="list-style-type: none"> Propose search corridor.
	G-6	Vermillion Highlands to Vermillion River	Empire	Empire	<ul style="list-style-type: none"> Feasibility study needed. Most land in public ownership. Greenway with trail following edge of Vermillion Highlands WMA. Addition of 6-mile greenway would create a 14-mile recreational loop trail. 	<ul style="list-style-type: none"> Propose search corridor.
	G-7	Lake Byllesby Greenway	Randolph, City of Randolph, Waterford, Sciota	MnDNR, City of Randolph, Randolph Township	<ul style="list-style-type: none"> Current partnership with MnDNR, part of planned Mill Towns State Trail Connection between Lake Byllesby east and west sections, currently identified in the Lake Byllesby Regional Park Master Plan. Brining into regional system will make regional funding available for implementation. 	<ul style="list-style-type: none"> Propose search corridor.
	G-8	Highway 52 Trail	Inver Grove Heights, West St. Paul		<ul style="list-style-type: none"> Feasibility study needed. Most land in public ownership. Six of eight miles existing. Would allow regional funding for gaps. Increases proximity to greenway for West St. Paul, South St. Paul, and Inver Grove Heights Residents. 	<ul style="list-style-type: none"> Propose search corridor.
	G-9	Lebanon Greenway to Mississippi River Greenway	Inver Grove Heights	Inver Grove Heights	<ul style="list-style-type: none"> Feasibility study needed. Five miles connecting Lebanon Greenway to Mississippi River Greenway. Addresses east west service gap in northeastern part of County. 	<ul style="list-style-type: none"> Propose search corridor.