

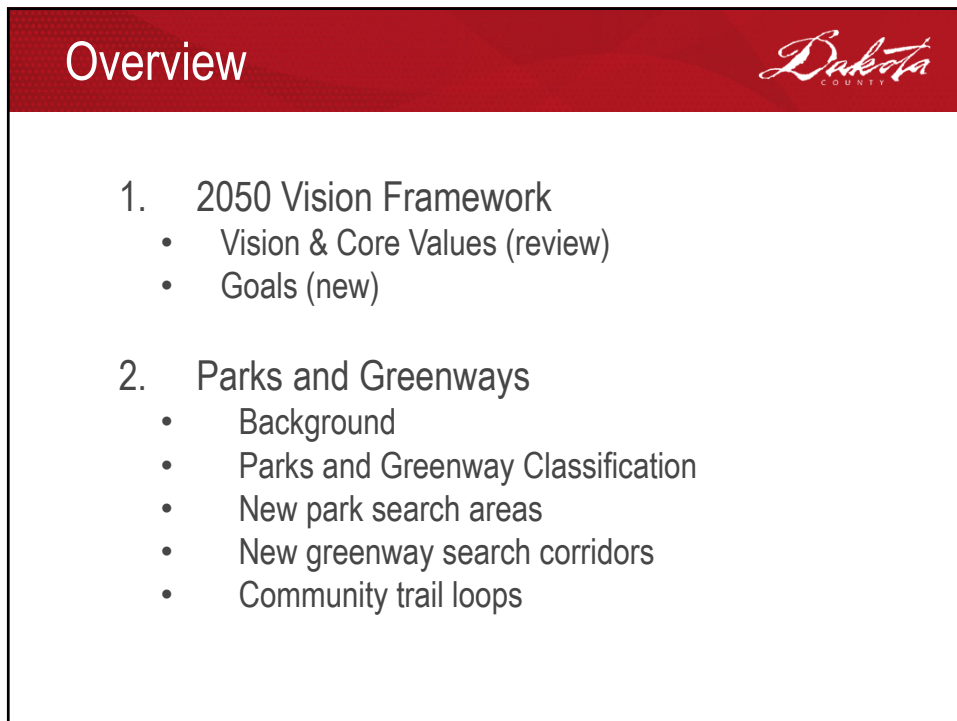


Dakota
COUNTY


Dakota County Parks 2050 Vision Plan

Lil Leatham, Principal Planner
Niki Geisler, Parks Director
Dakota County Planning Commission
December 19, 2024

1



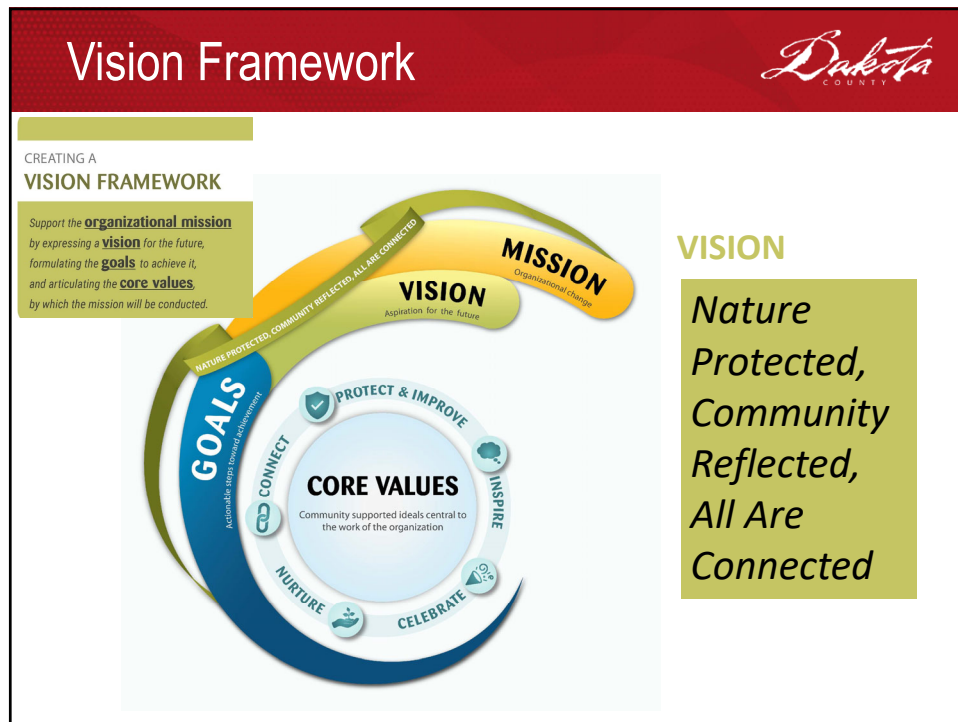
Overview



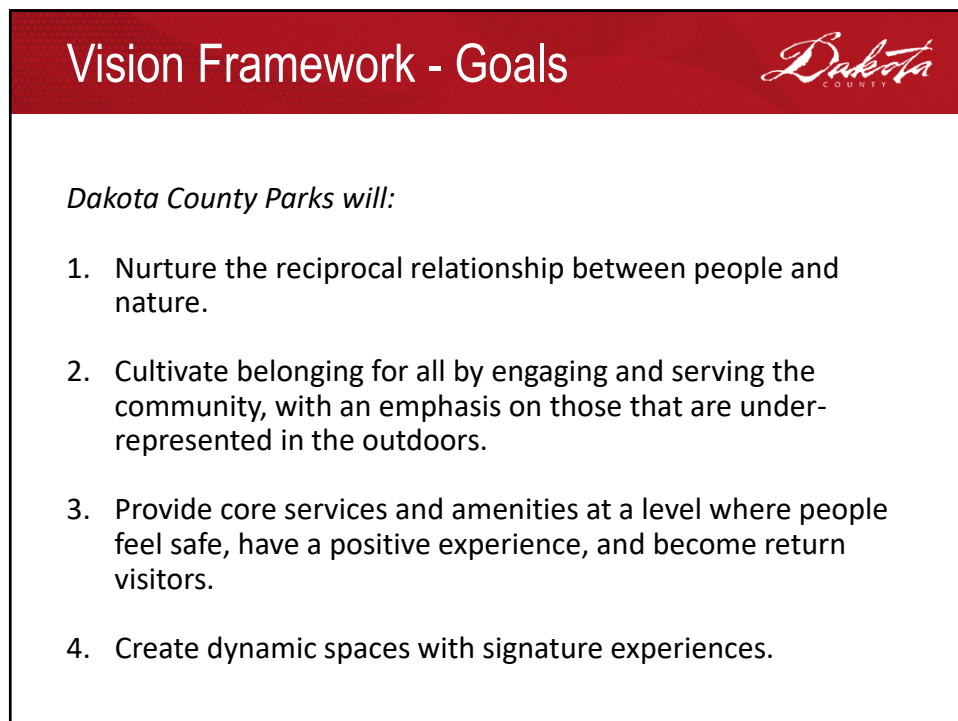
Dakota
COUNTY

1. 2050 Vision Framework
 - Vision & Core Values (review)
 - Goals (new)
2. Parks and Greenways
 - Background
 - Parks and Greenway Classification
 - New park search areas
 - New greenway search corridors
 - Community trail loops

2



3



4

Vision Framework - Goals



Dakota County Parks will:

5. Expand environmental stewardship through outdoor programs, learning, and volunteerism.
6. Offer opportunities to improve physical, mental, and spiritual health.
7. Strengthen partnerships with Tribal Nations and Indigenous communities to protect the lands and lifeways of cultural significance.
8. Locate new park units where they are available and accessible to all.
9. Lead on ecological health and climate resilience.

5

Vision Framework - Goals




Dakota County Parks will:

10. Elevate cultural richness through nature-based arts, historic preservation, and interpretation.
11. Seek values-based and mission-driven partnerships.
12. Care for the system through sustainable and innovative funding.
13. Develop a diverse and thriving workforce that represents the communities we serve.
14. Support flourishing local economies.

6

New Park and Greenway Units




Goal 8
Locate new park units where they are available and accessible to all.

Addresses:

- Geographic gaps and residential development moving south.
- Lack of proximity to demographics underrepresented in park visits.
- Population growth.
- Providing better access to the Mississippi and Minnesota Rivers.

2021 Visitor Snap Shot




Under-Represented On-Target Over-Represented

AGE	PARKS	GREENWAYS	PARKS	GREENWAYS	PARKS	GREENWAYS
12 - 17	✓	✓				
18 - 24	✓	✓				
25 - 34			✓	✓		
35 - 54					✓	✓
55 - 74					✓	✓
75 +	✓	✓				
HOUSEHOLD INCOME						
Less than \$40,000	✓	✓				
\$40,000 - \$79,999	✓	✓				
\$80,000 +					✓	✓
GENDER						
Male					✓	✓
Female	✓	✓				
RACE						
People of Color	✓	✓				
White					✓	✓
ETHNICITY						
Hispanic/Latino	✓	✓				

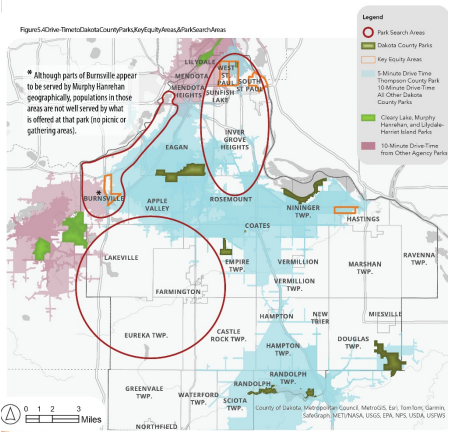
Data from 2021 Met Council Regional Parks and Trails System Visitor Study and 2022 US Census ACS Estimates, Table DP05.

7

Geographic Service Gaps

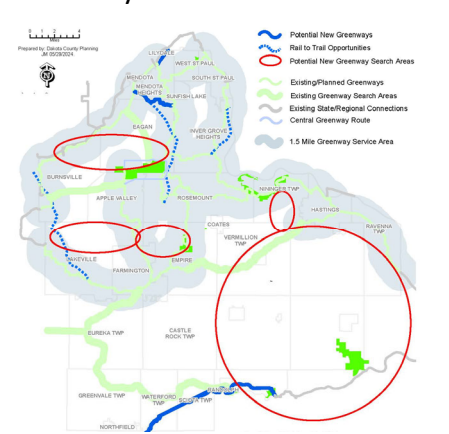


Parks

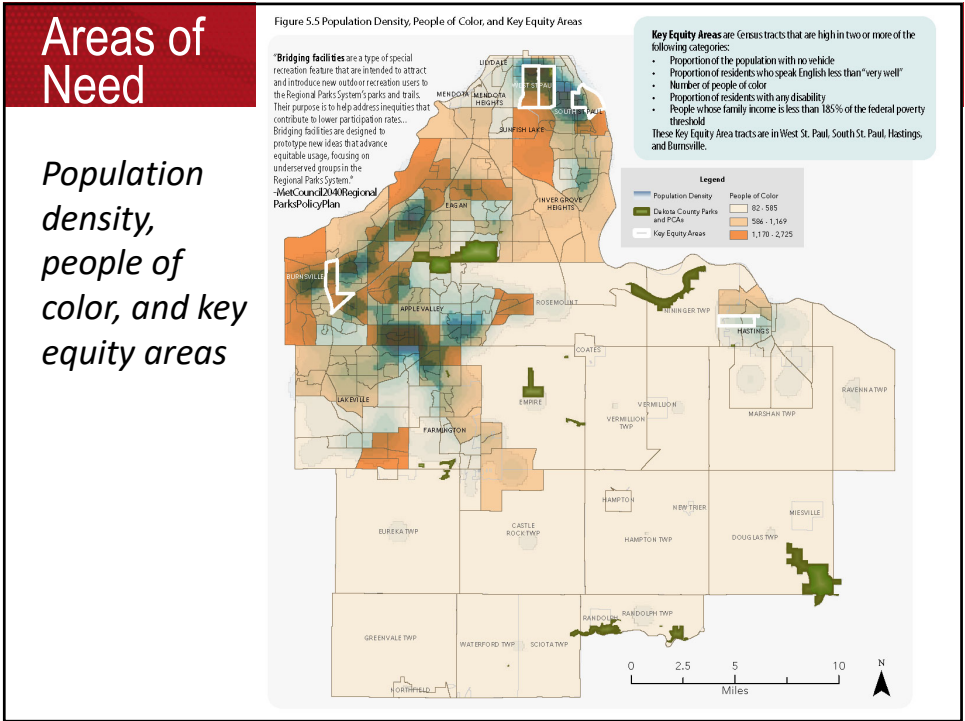


* Although parts of Burrowsville appear to be served by Murphy Hamenan geographically, populations in those areas are not well served by what is offered at that park (no picnic or gathering areas).

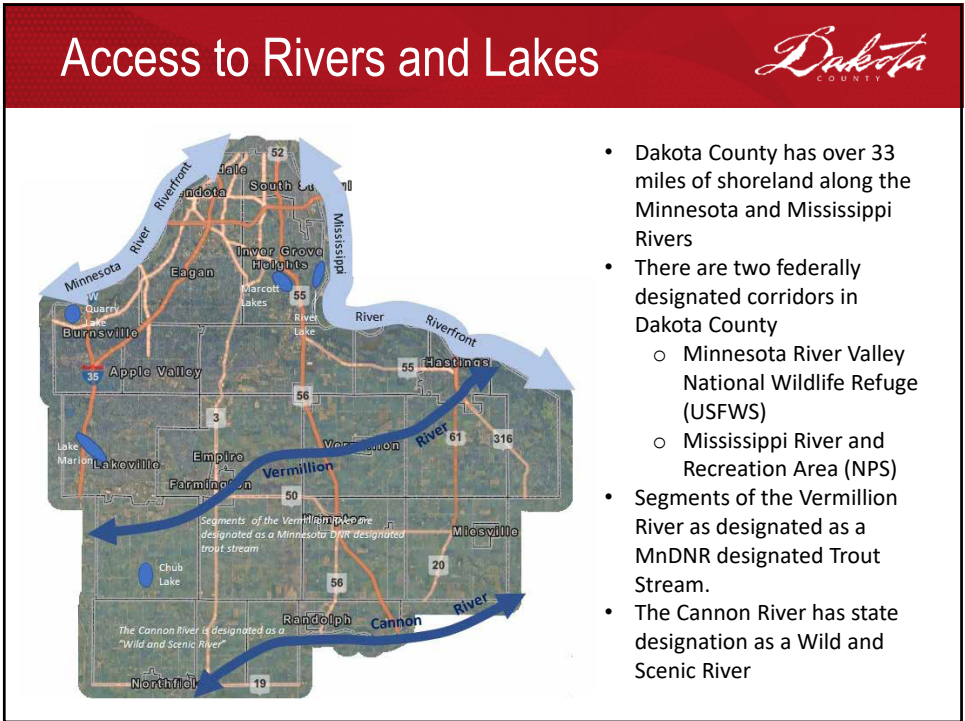
Greenways



8



9



10

New Park and Greenways



Process

- Search areas/corridors discussed with individual County Commissioners and with City Staff.
- Candidate sites refined by project team.
- Additional study, after the 2050 Vision Plan, needed for park candidate sites and greenway search corridors.

11

Park Classification



Regional System

- Park
- Park Reserve
- Special Recreation Feature*
- Bridging Facility*
- Cultural Landscape and Open Space Classification*

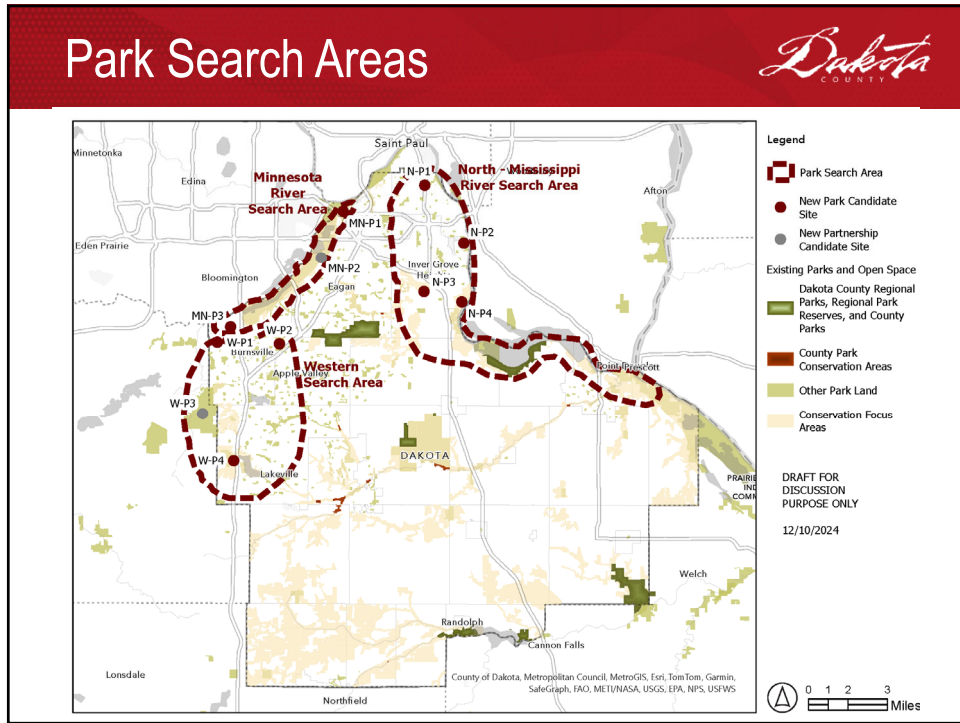
County System

- Park
- Park Conservation Area*

Private Community Recreation or Conservation Asset*

**New for Dakota County since 2030 Plan*

12



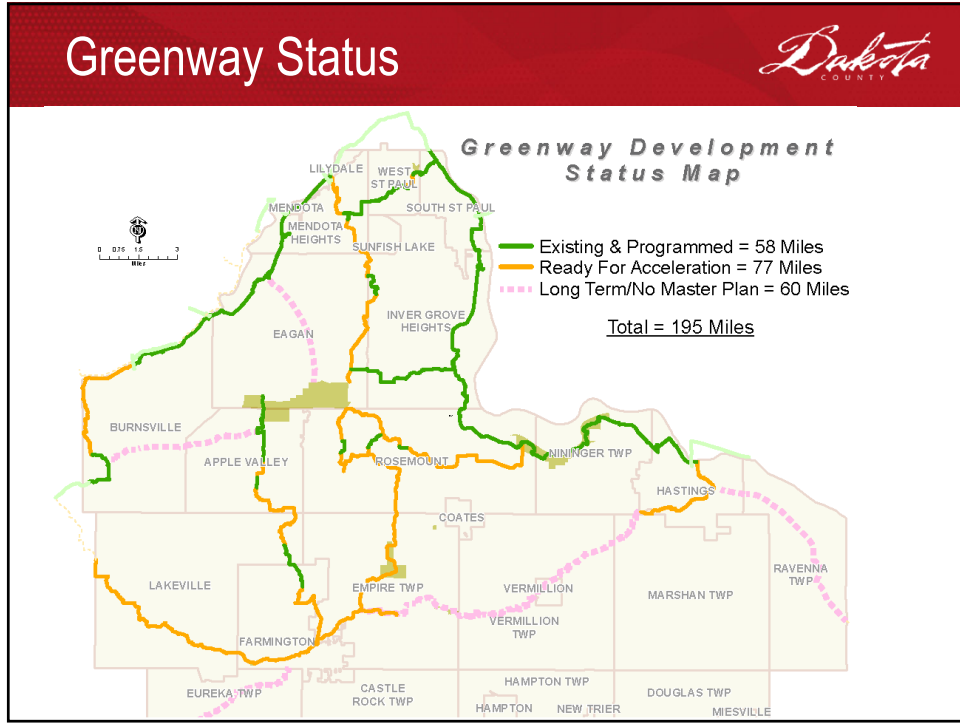
13

Greenway and Trail Classification

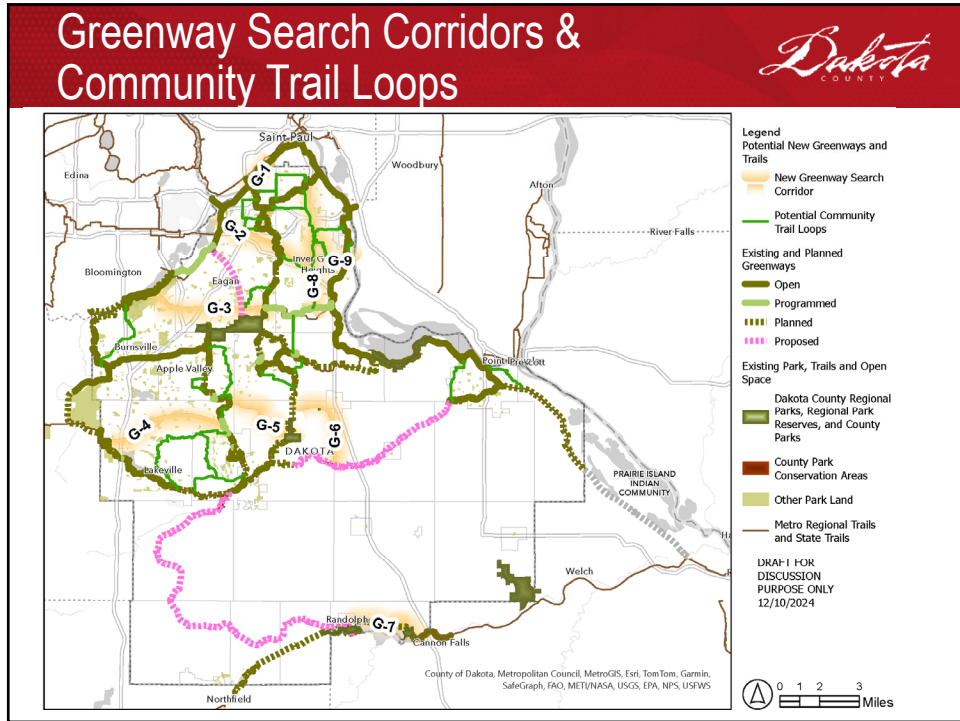
- Regional**
 - Greenway
 - Expand Greenway Collaborative*
- County & City Partnership**
 - Community Greenway Loop*

*New or expanded for Dakota County since 2030 Plan

14



15



16

Potential Approaches



A. New Regional Greenway Search Corridors

- Allows greenway development along with or in advance of development
- Brings greenways closer to more residents and creates shorter loop options
- In urban areas, county partnership with cities to fill gaps in local trail systems to create regional trail corridors
- Allows for regional funding for development
- Natural resource component

17

Potential Approaches



- ### B. Expand collaboration efforts to include partnership to advance equity and accessibility in the outdoors.
- Provide more nature-based recreation offerings.
 - County would help fund, city would construct and maintain.
 - Examples:
 - Fishing piers
 - Walking scale accessible trail loops
 - Nature play areas

18

Potential Approaches



- C. County role in community greenway loops
- Connects residents to greenways
 - City-county partnership with cities to support walkable communities within Dakota County
 - Cities prioritize important connections
 - Opportunities for shorter, more walking scale loops
 - Locally led projects with a range of levels County involvement and support
 - Less – Limited to political support for grants and funding proposals
 - Some – Preparation of grants and proposals, perhaps supported with County local match
 - More – Cost share partnerships with cities to build supporting loops

19

2050 Vision Plan Direction



- Support for new park search areas?
 - *New park development would be further explored in each search area.*
- Support for new regional greenway search areas?
 - *Search corridors would be further explored with feasibility studies and long range plans.*
- Support for expanded regional greenway collaborative concept?
- Support for community greenway loops concept?

20

Thank You!



21