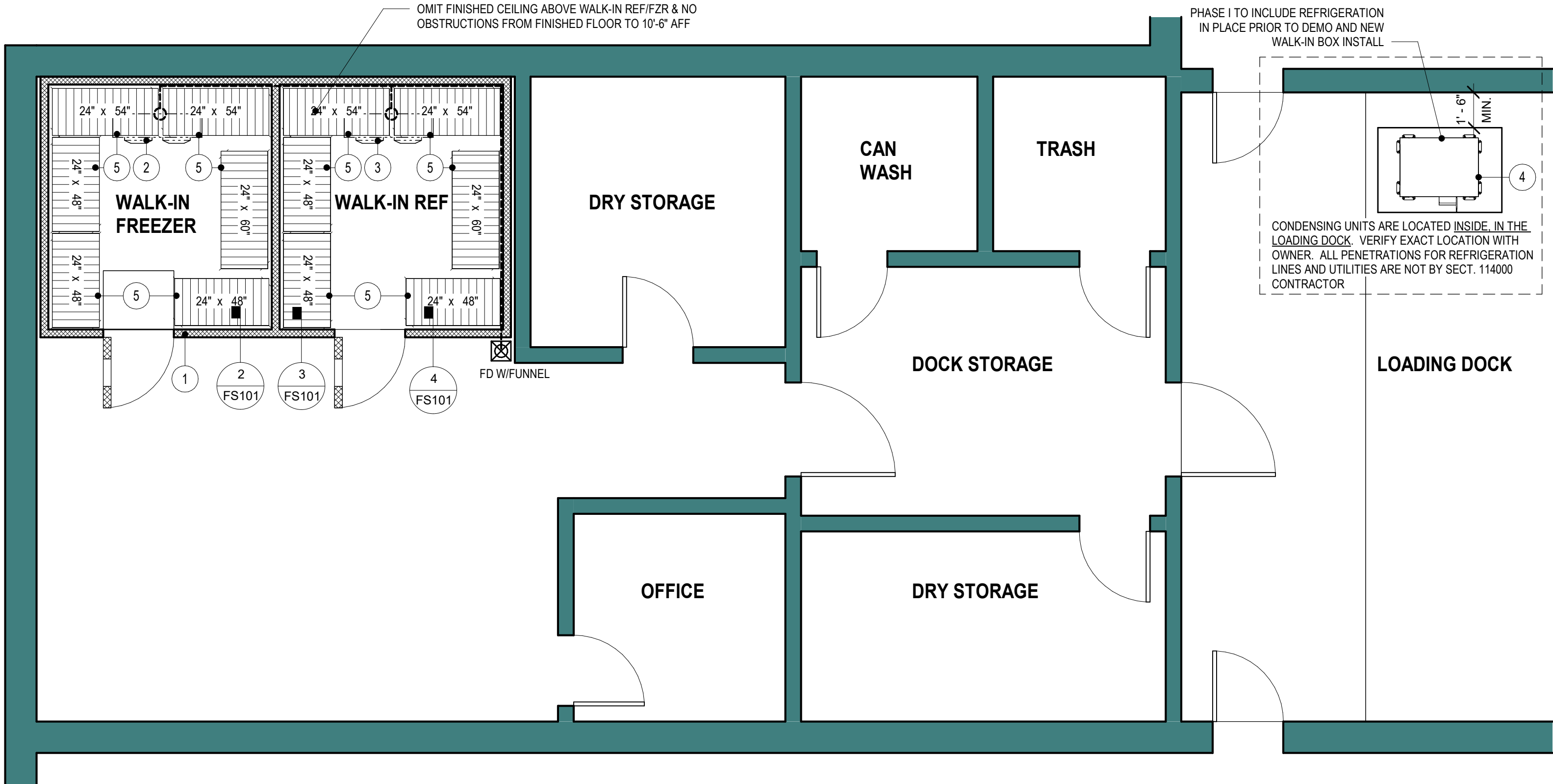
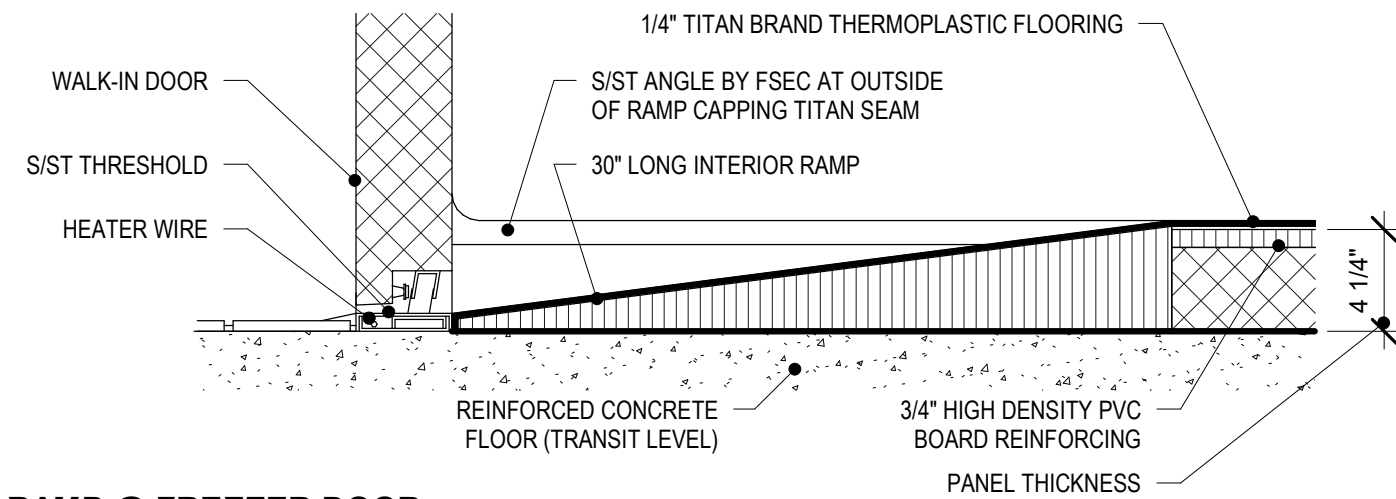


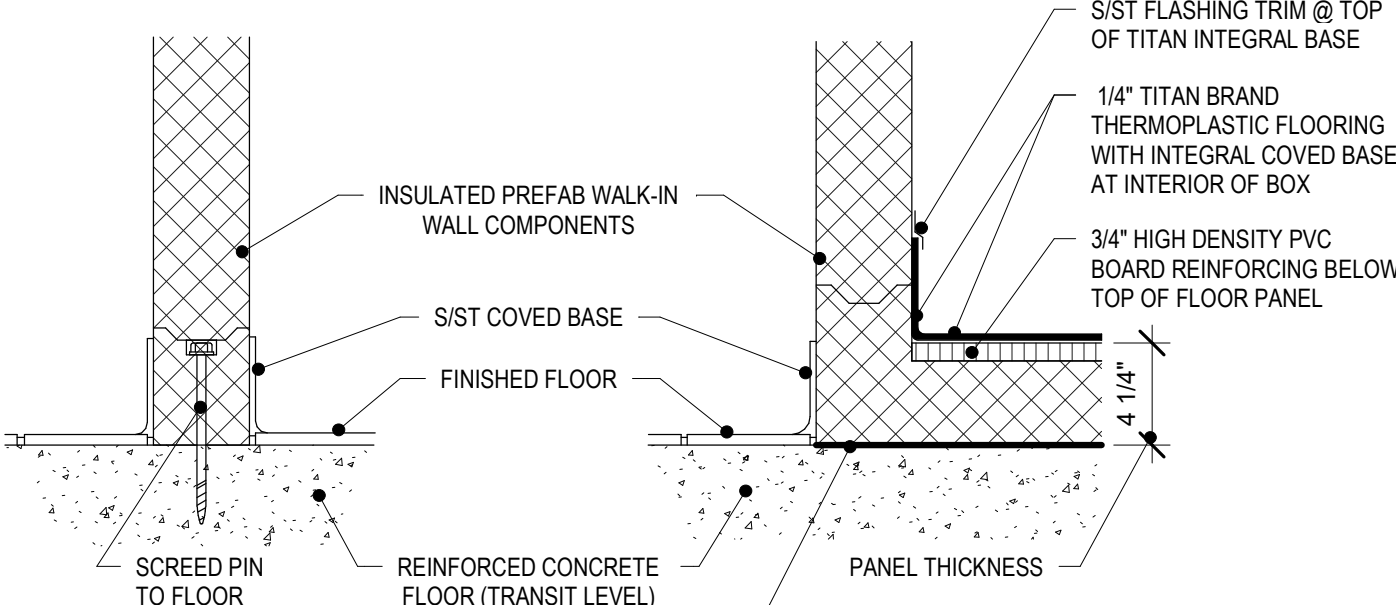
FOODSERVICE EQUIPMENT SCHEDULE			
ITEM #	QTY	DESCRIPTION	REMARKS
1	1	WALK-IN REFRIGERATOR	
2	1	FREEZER SYSTEM COIL	
3	1	REFRIGERATION SYSTEM COIL	
4	1	RACKED REFRIGERATION SYSTEM	
5	12	REFRIGERATOR/FREEZER SHELVING	
6	1	TEMPORARY REFRIGERATOR	NOT SHOWN ON PLAN
7	1	TEMPORARY FREEZER	NOT SHOWN ON PLAN



1 FOODSERVICE EQUIPMENT PLAN
1/4" = 1'-0"



RAMP @ FREEZER DOOR

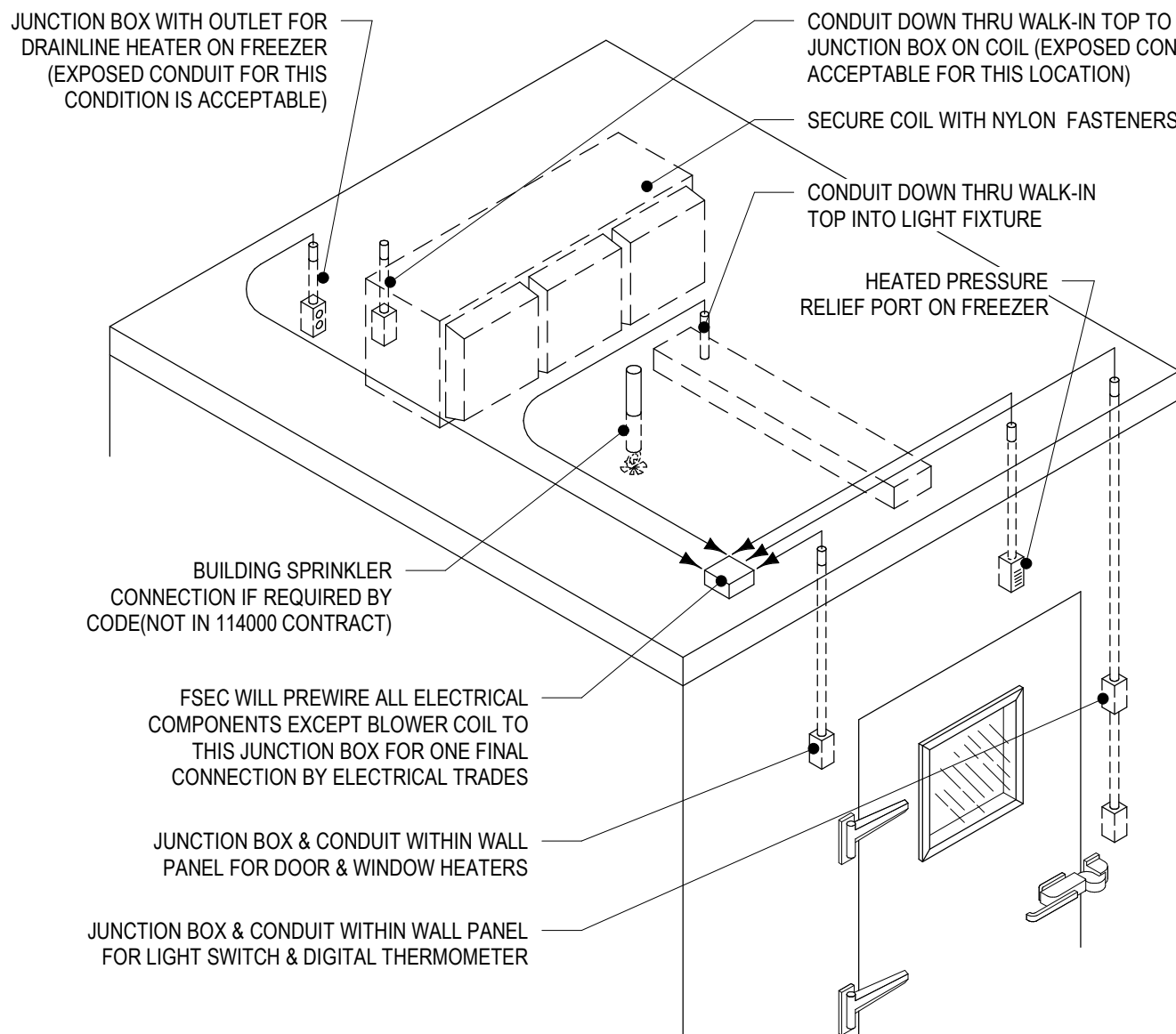


EXTERIOR WALL @ REF

EXTERIOR WALL @ FREEZER

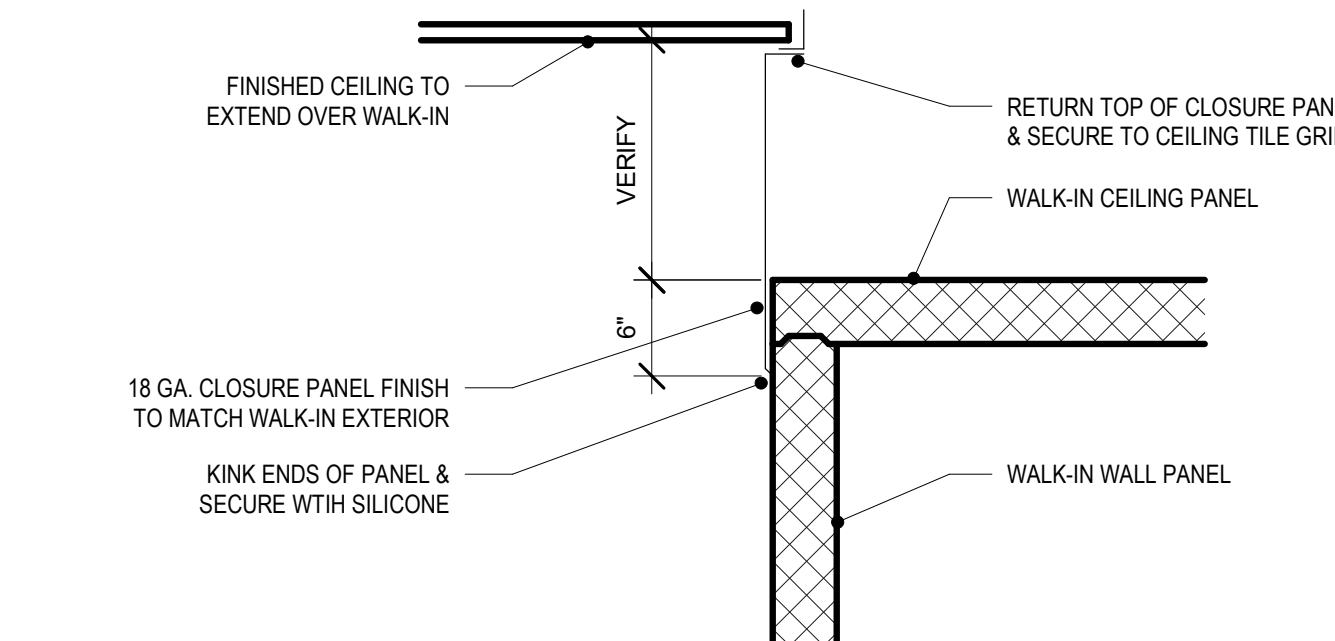
- NOTES:
- ALL MATERIALS EXCEPT WALK-IN WALL, FLOOR, DOOR COMPONENTS, AND STAINLESS STEEL COVERED BASE ARE NOT IN SECTION 114000.
 - THIS DETAIL CANNOT BE USED WHERE THERE IS OCCUPIED SPACE BELOW WALK-INS.
 - MINIMUM OF 6 MIL POLYETHYLENE SHEET, APPLIED DRY WITH 4" OVERLAP, SEALED AT PERIMETER AND JOINTS WITH ASPHALT EMULSION ADHESIVE, TURN END UP AT PERIMETER.
 - FSEC TO PROVIDE REINFORCED INTERIOR RAMP AT FREEZER DOOR.
 - FSEC TO SECURELY ANCHOR SCREEDS TO BUILDING FLOOR IN BED OF SILICONE SEALANT.

2 SD-183 WALK-IN FLOOR - FLOOR/FLOORLESS
1 1/2" = 1'-0"

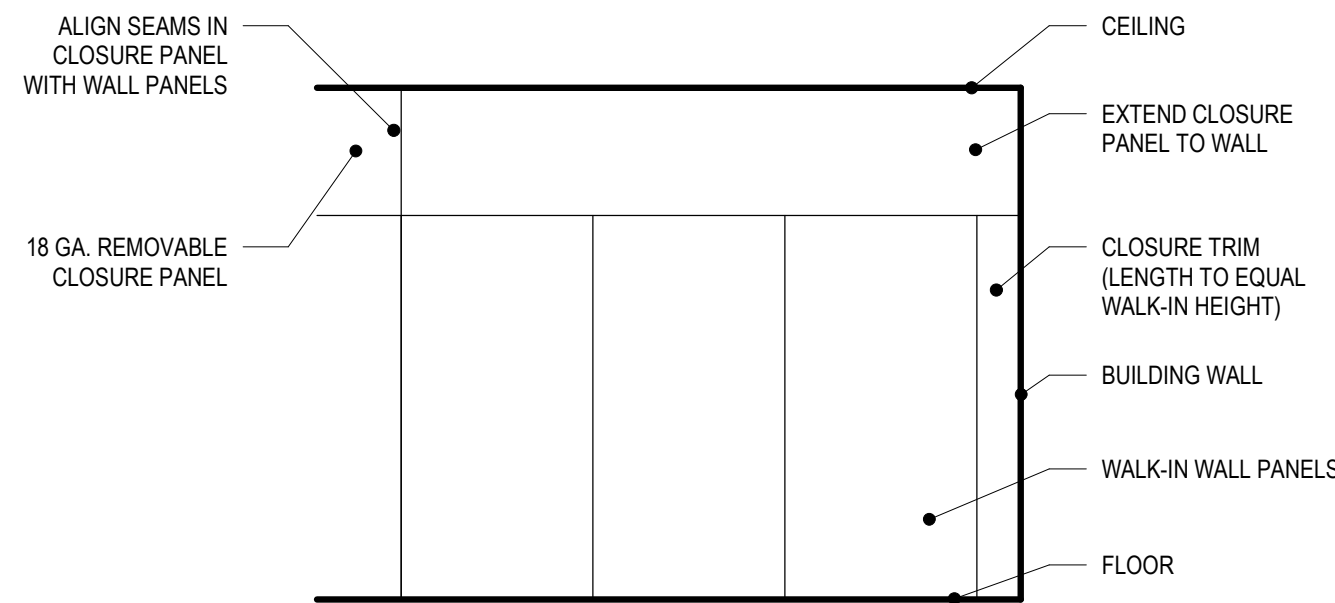


- NOTES:
- IT IS THE RESPONSIBILITY OF THE FSEC TO FURNISH, INSTALL AND INTERCONNECT CONDUIT AND WIRING FOR ELECTRICAL COMPONENTS INCLUDING LIGHTS, SWITCHES, THERMOMETERS, DOOR, WINDOW, PRESSURE RELIEF PORT HEATERS AND RECEPTACLE FOR DRAINLINE HEATER TO EASILY ACCESSIBLE JUNCTION BOX ON TOP OF WALK-IN FOR FINAL CONNECTION BY ELECTRICAL TRADES.
 - ALL INTERCONNECTING CONDUIT RUN ABOVE WALK-IN PANELS OR WITHIN WALL PANELS. EXPOSED CONDUIT INSIDE WALK-IN WILL NOT BE ACCEPTABLE EXCEPT FOR THE CONNECTIONS SHOWN AND NOTED IN THE ABOVE ILLUSTRATION.
 - SEAL PENETRATIONS THROUGH CEILING, WALLS AND INSIDE ELECTRICAL CONDUIT OUTSIDE AND INSIDE WALK-IN WITH DOW CORNING #999A SILICONE SEALANT.
 - PROVIDE HOLES FOR SPRINKLER HEAD (IF REQUIRED) AND ELECTRICAL CONDUIT.
 - PROVIDE 1/2" OD PVC CONDUIT AT ALL PENETRATIONS THRU INSULATED PANELS.

3 SD-191 WALK-IN REFRIGERATOR/FREEZER - CONNECTION DETAIL
1" = 1'-0"



SECTION



ELEVATION

- NOTE:
- INSTALLATION OF CLOSURE PANELS TO BE DONE AFTER WALK-INS ERECTED SO FIELD MEASUREMENTS CAN BE VERIFIED

4 SD-193 WALK-IN CLOSURE PANEL - FIXED
1" = 1'-0"

FOR INFORMATION ONLY

Key Plan

REVISION:
No. Description Date

Date: 09/12/2024
Project Number: 24.009.10
Drawn By: KT
Checked By: JD

Project Title
DAKOTA COUNTY LEC WALK-IN REPLACEMENT

Sheet Title
FOODSERVICE EQUIPMENT PLAN AND SCHEDULE

Sheet Number

FS101

NOT FOR CONSTRUCTION