

Dakota County  
Safe Routes to School

DAKOTA  
31  
COUNTY



# Safe Routes to School Comprehensive Plan

**Rosemount Elementary School**

**City of Rosemount  
Dakota County, MN**

**June 2010**

Prepared by:



Kimley-Horn  
and Associates, Inc.



# Dakota County Safe Routes to School

DAKOTA  
31  
COUNTY



## Project Background

The Statewide Health Improvement Program (SHIP) aims to help Minnesotans live longer, healthier lives by reducing the burden of chronic disease. The Dakota County Public Health Department received SHIP funding to work with community partners to develop and implement programs to improve nutrition, increase physical activity, and reduce tobacco use in schools, workplaces, community settings, and healthcare sites. As part of this effort, comprehensive Safe Routes to School (SRTS) plans have been developed for 10 schools in Dakota County that seek to increase walking and biking to school through the following means:

- **Education** – Teaching children to walk and bike safely.
- **Encouragement** – Developing programs that get children excited about walking or biking to school, such as walk/bike incentive programs or Walk to School Day. May also include methods that help parents and guardians feel comfortable letting their child walk or bike, such as walking school buses or adult crossing guards.
- **Enforcement** – Having law enforcement support, such as speed zone enforcement or increased patrols, along the designated routes to school.
- **Engineering** – Identifying infrastructure barriers to walking and biking, such as sidewalk/trail gaps, hazardous crossings, or the need for secure bicycle parking.
- **Evaluation** – Measuring the effectiveness of the various components of the SRTS project.

The following sections describe the development of a Safe Routes to School Plan for Rosemount Elementary School in the City of Rosemount, Dakota County, Minnesota.

## Existing Conditions

Rosemount Elementary School is part of Independent School District 196 serving the Rosemount, Apple Valley, and Eagan communities in the Twin Cities suburbs. Rosemount Elementary School and Rosemount Middle School are located next to each other on 143<sup>rd</sup> Street, just west of TH 3 (Robert Trail). Rosemount Elementary School opened in 1960 and was expanded and upgraded in 2006. The elementary and middle schools are part of the same campus with Rosemount High School, which is located to the north. The area surrounding the schools is primarily residential.

## ***Student Data***

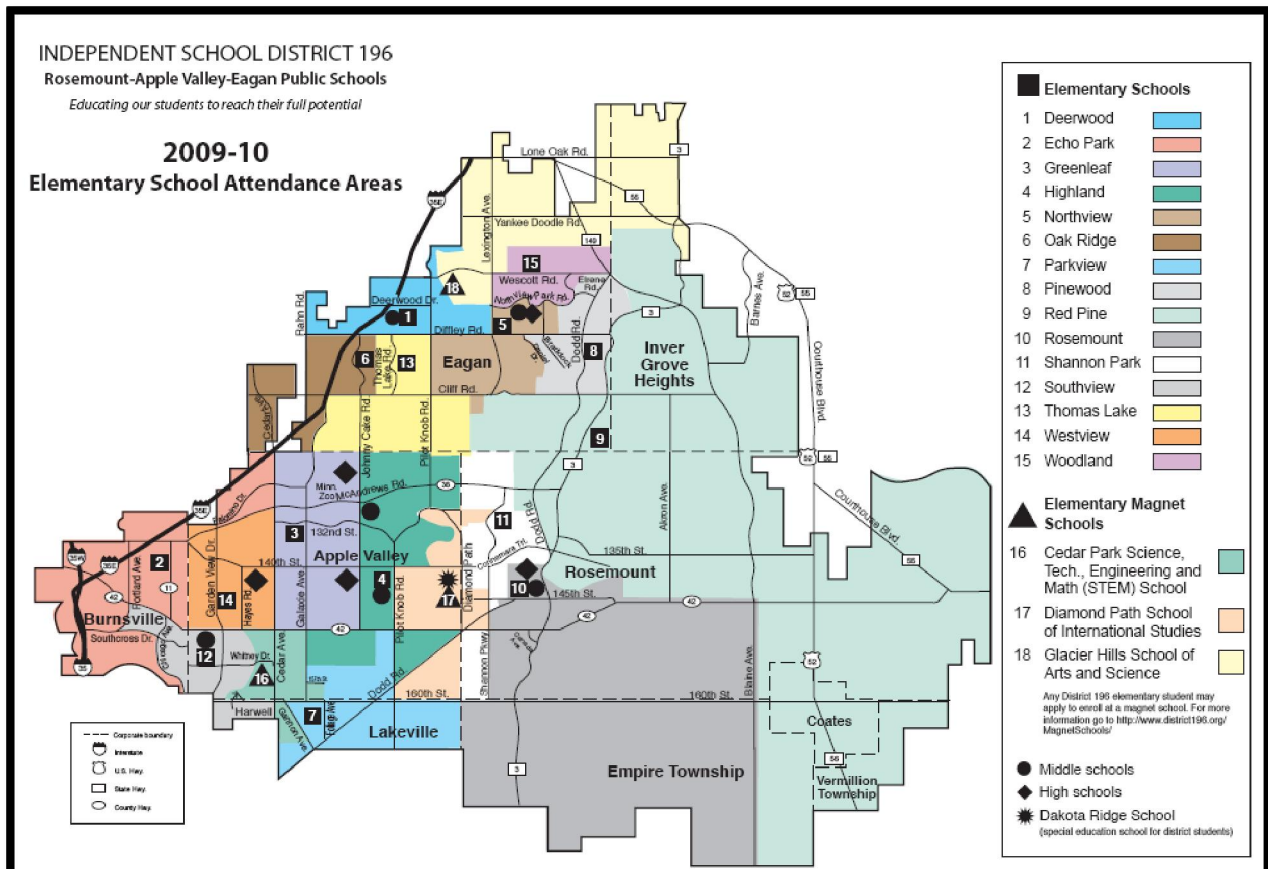
Currently, there are approximately 700 students in kindergarten through 5<sup>th</sup> at Rosemount Elementary School grade (2009-2010 school year) and the school day runs from 9:25 am to 3:45 pm. The elementary

# Dakota County Safe Routes to School

DAKOTA  
31  
COUNTY



school boundary map for District 196 shows that the attendance area for Rosemount Elementary School is quite large and the school is located in the northwest corner of the attendance area.



Source: [www.district196.org](http://www.district196.org)

Although Rosemount Elementary has a large attendance area, the designated walk area for the school is approximately ½ mile. In addition, the school district designates hazardous roadways beyond which students are bused even if they are within the 1/2 mile walk area. At Rosemount Elementary School, the only designated hazardous roadway is Minnesota Trunk Highway (TH) 3 (Robert Trail). This means that students living across TH 3 (Robert Trail) from the elementary school are provided bus transportation, however, there are very few homes immediately east of TH 3 (Robert Trail). The walk area for Rosemount Elementary School is shown on the map on page 13.



# Dakota County Safe Routes to School

DAKOTA  
31  
COUNTY



## *Safe Routes to School Activities*

Rosemount Elementary held a Walk to School Day in the fall of 2009 with a group of 50 to 60 students and school staff walking to school from the Rosemount Community Center. Currently, there is not a targeted Safe Routes to School program at Rosemount Elementary School, but there is a regular student school patrol consisting of 8 students. The designated school crossings near the elementary and middle schools are:

- 145<sup>th</sup> Street/Canada Avenue – school patrol location
- 145<sup>th</sup> Street/Cameo Avenue
- 144<sup>th</sup> Street/Cameo Avenue – school patrol location
- 144<sup>th</sup> Street/Rosemount Elementary School (mid-block between Canada Avenue and Cameo Avenue) – school patrol location
- 143<sup>rd</sup> Street/Cameo Avenue
- 142<sup>nd</sup> Street/TH 3 (Robert Trail)

In the past, Rosemount Elementary School has had a paid adult crossing guard on TH 3 (Robert Trail).



*School patrol on 144<sup>th</sup> Street at Rosemount Elementary.*

In 2009, the City of Rosemount was awarded a \$35,000 federal Safe Routes to School grant to implement encouragement, education and evaluation activities at Rosemount Elementary, Rosemount

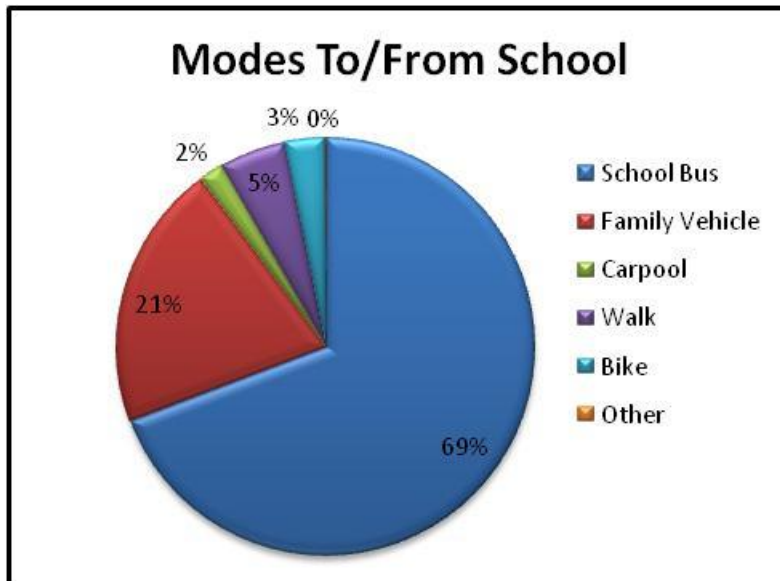
# Dakota County Safe Routes to School

DAKOTA  
31  
COUNTY



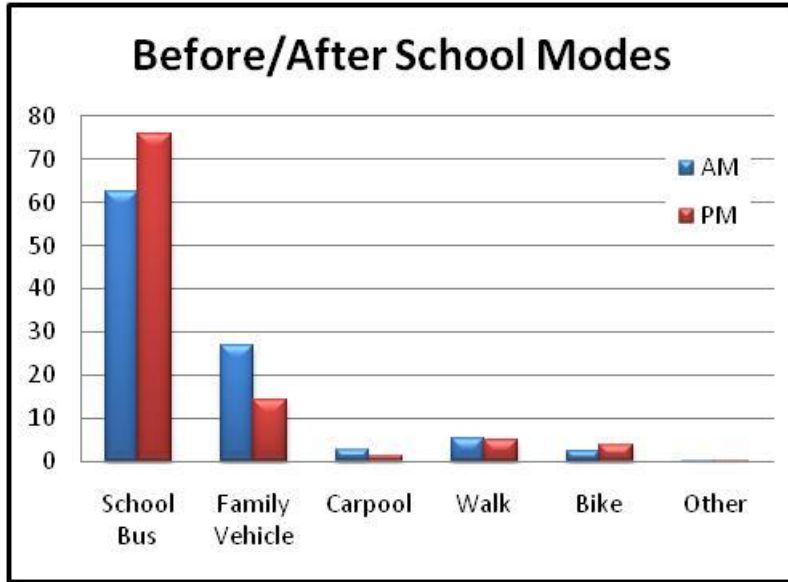
Middle, and Shannon Park Elementary. The City is currently working to determine how to best use the grant funding.

In-classroom tallies of students' arrival and departure modes were conducted at Rosemount Elementary in April 2010. As shown in the chart below, an average of 5 percent of students currently walk to school and an average of 3 percent of students currently bike to school. However, the most predominant mode to and from school is by school bus. The tallies also showed that slightly more students walked and biked home from school in the afternoon, and significantly more students ride the bus in the afternoon.

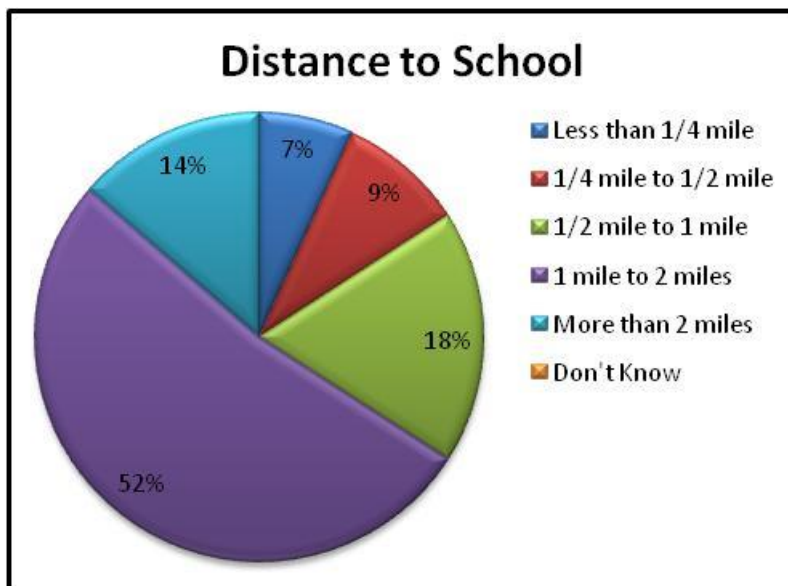


# Dakota County Safe Routes to School

DAKOTA  
31  
COUNTY



A parent survey of concerns and attitudes related to walking and biking was conducted at Rosemount Elementary and Middle Schools in April 2010, with 44 responses. Most respondents live between 1 and 2 miles of the schools, and the amount of traffic and intersection safety were the top factors that influenced the decision to walk or bike. The survey also showed that approximately 20 percent of the respondents live east of TH 3 (Robert Trail) and another 35 percent live south of CSAH 42 (150<sup>th</sup> Street). The charts on the following pages show some of the other key results from the survey.



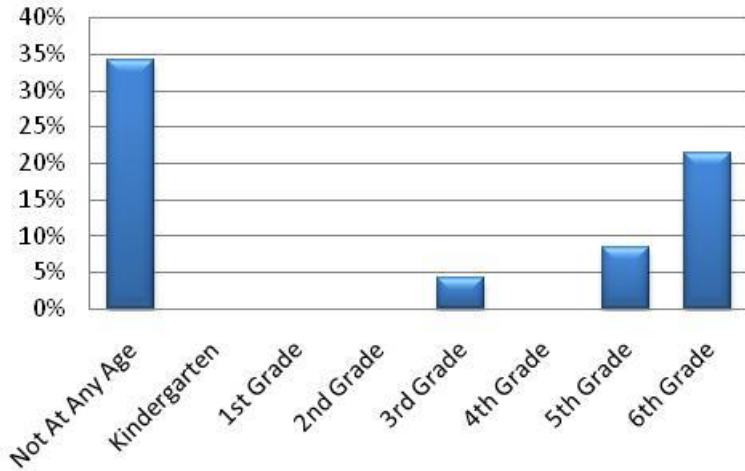


# Dakota County Safe Routes to School

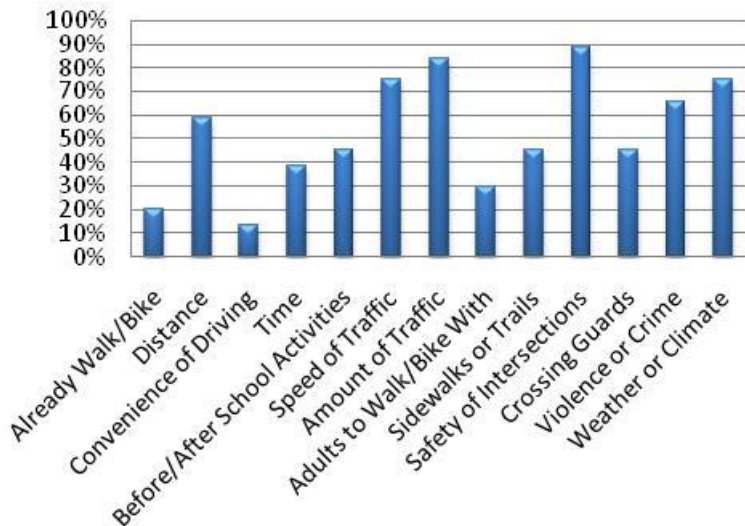
DAKOTA  
**31**  
COUNTY



## Age Students Can Walk/Bike to School Without An Adult



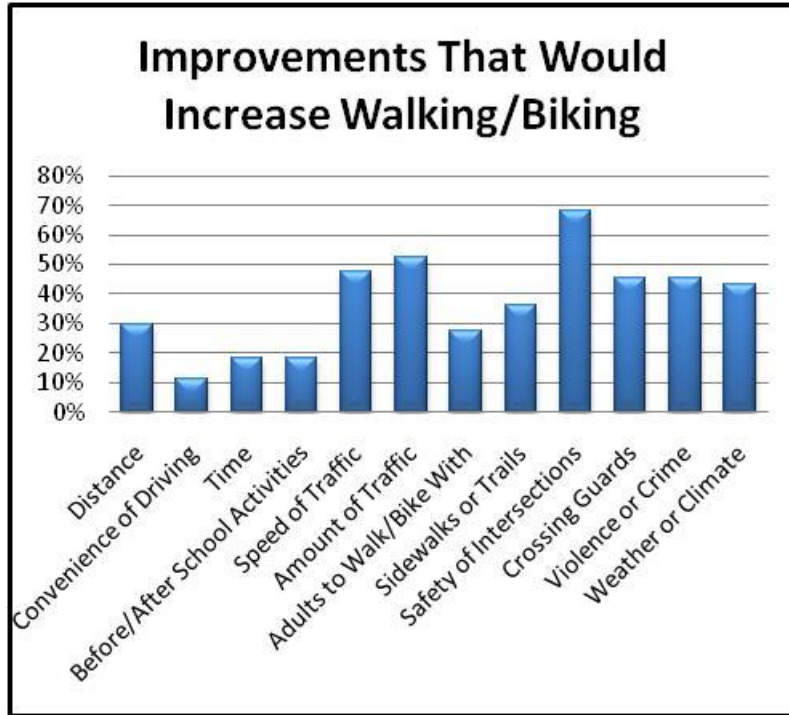
## Factors Affecting Decision to Walk/Bike





# Dakota County Safe Routes to School

DAKOTA  
31  
COUNTY



## ***Infrastructure***

The primary access to the Rosemount Elementary and Rosemount Middle Schools site is on 143<sup>rd</sup> Street via TH 3 (Robert Trail). A turn lane on southbound TH 3 (Robert Trail) at 143<sup>rd</sup> Street is proposed to be added in 2010. The parking lot between the elementary and middle schools is shared by both schools and used for staff as well as parents and visitors. The elementary and middle schools have different hours, so there are not conflicts between the two.

# Dakota County Safe Routes to School

DAKOTA  
31  
COUNTY



*Rosemount Elementary School (left) and Rosemount Middle School (center) share a parking lot for staff and parent parking, as well as bus loading/unloading.*

The roadways surrounding the school generally have a good system of sidewalks and trails, but don't necessarily have good connections within the school district complex. The primary pedestrian routes to and from the elementary school are on 145<sup>th</sup> Street, Canada Avenue, and Cameo Avenue, which have sidewalk on one or both sides of the street. However, 143<sup>rd</sup> Street, Upper 143<sup>rd</sup> Street, and portions of 144<sup>th</sup> street do not have sidewalk on either side of the street and there is no sidewalk on the north or west sides of the school.

School speed zones were recently established by the Rosemount City Council on 145<sup>th</sup> Street, Cameo Avenue, and Canada Avenue. The zone lowers the speed limit from 30 miles mph to 20 mph when children are present.

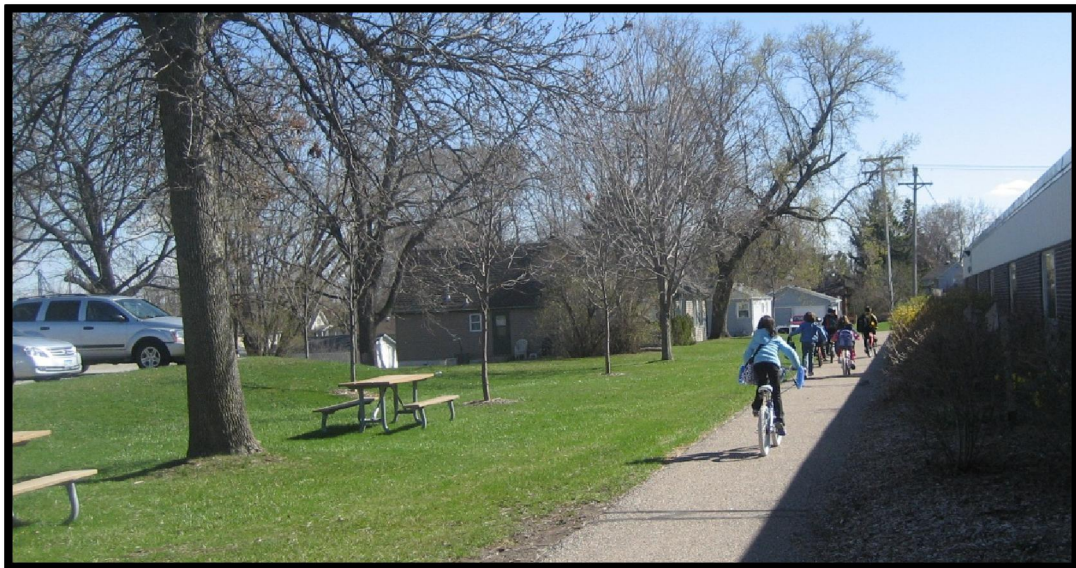


# Dakota County Safe Routes to School

DAKOTA  
31  
COUNTY



*View of 144<sup>th</sup> Street looking west from the Rosemount Elementary. There is no sidewalk on 144<sup>th</sup> Street west of Canada Avenue.*



*Trail connection from 144<sup>th</sup> Street to the front entrance of Rosemount Elementary.*

In addition to the off-site infrastructure, Rosemount Elementary has several bike racks located near the front entrance of the school.

# Dakota County Safe Routes to School

DAKOTA  
31  
COUNTY



*Bike parking in front of Rosemount Elementary School.*

A review of the crash history for the past five years (2004-2008) showed that there have been 2 crashes at the 143<sup>rd</sup> Street/Cameo Avenue intersection and 1 crash on the elementary/middle school site, but no other crashes on Upper 143<sup>rd</sup> Street, 143<sup>rd</sup> Street, or 144<sup>th</sup> Street, except at Chili Avenue. Within the Rosemount Elementary walk area, there has been 1 pedestrian crash and 1 bicycle crash at the 145<sup>th</sup> Street/Chili Avenue/Chippendale Avenue intersection, and 1 pedestrian crash at the 145<sup>th</sup> Street/Canada Avenue intersection.

## ***Site Evaluation***

A site evaluation was completed at Rosemount Elementary on April 8, 2010 that included walking around the site and observing the dismissal process on a typical day. At the elementary school, all buses enter and exit the site using the driveway on 143<sup>rd</sup> Street. There was not a large volume of parent pick-up/drop-off traffic, and it was split between the small south parking lot next to the elementary school building and on-street loading/unloading on 144<sup>th</sup> Street between Cameo Avenue and Canada Avenue. As a result, there was little to no congestion in the parking lot during arrival and dismissal times.



# Dakota County Safe Routes to School

DAKOTA  
31  
COUNTY



*School parking lot at Rosemount Elementary during afternoon dismissal.*

## **Existing Issues and Challenges**

In addition to the data collection and site evaluation completed as part of this project, a Safe Routes Working Group was established for Rosemount Elementary and Middle Schools that included both school principals, the City of Rosemount, and a parent representative. The role of this group was to discuss barriers to walking and biking to school as well as potential ways to overcome the barriers.

The existing challenges to walking and biking to Rosemount Elementary are summarized in the following bullets, as well as the map on page 13:

- Chili Avenue is the “high school drag” and has a high number of crashes.
- No school crossings are signed or marked on Chili Avenue between the high school and 145<sup>th</sup> Street. No school patrol was observed crossing Chili Avenue.
- Vehicles park too close to the mid-block school crossing on 144<sup>th</sup> Street, limiting the visibility of pedestrians stepping into the street.

# Dakota County Safe Routes to School

DAKOTA  
31  
COUNTY

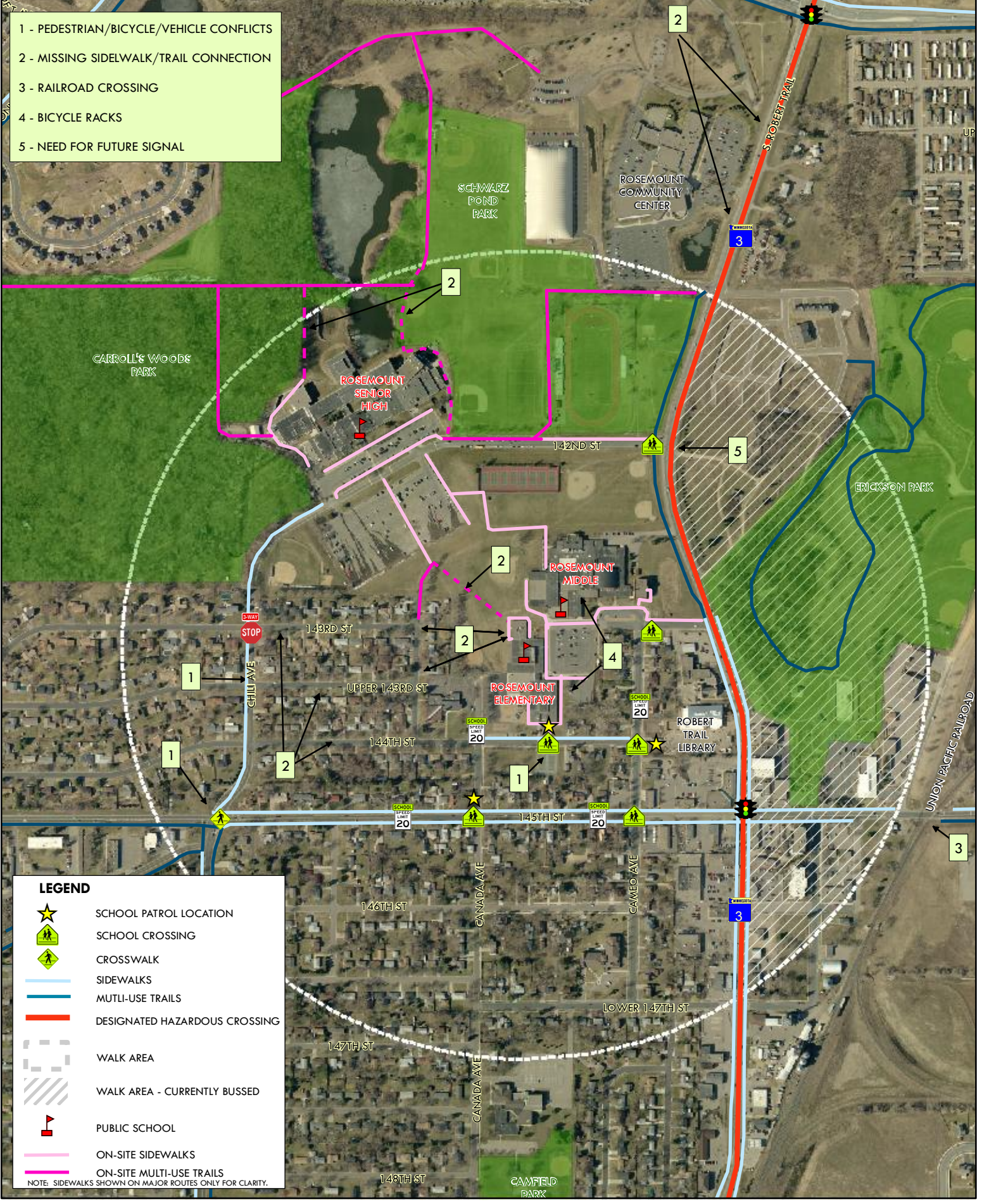


*Parking on 144<sup>th</sup> Street at the mid-block school crossing to Rosemount Elementary.*

- No sidewalk or trail connection between the elementary/middle schools and 143<sup>rd</sup> Street or Upper 143<sup>rd</sup> Street.
- No sidewalk on 143<sup>rd</sup> Street, Upper 143<sup>rd</sup> Street, or portions of 144<sup>th</sup> Street. Students that live west of the school walk in the street.
- Most students live south of County Road 42 (150<sup>th</sup> Street) or east of TH 3 (Robert Trail).
- Crossing the railroad tracks, even though they are gated, is perceived as being more dangerous than crossing TH 3 (Robert Trail).
- Conflict between buses loading at the curb and students biking on the sidewalk – need clear zone on the sidewalk.
- District budgets may increase walk radius in the future – opportunity for more walking and biking, but could also mean even more parents driving.



- 1 - PEDESTRIAN/BICYCLE/VEHICLE CONFLICTS
- 2 - MISSING SIDELWALK/TRAIL CONNECTION
- 3 - RAILROAD CROSSING
- 4 - BICYCLE RACKS
- 5 - NEED FOR FUTURE SIGNAL



**LEGEND**

- SCHOOL PATROL LOCATION
- SCHOOL CROSSING
- CROSSWALK
- SIDEWALKS
- MUTLI-USE TRAILS
- DESIGNATED HAZARDOUS CROSSING
- WALK AREA
- WALK AREA - CURRENTLY BUSSED
- PUBLIC SCHOOL
- ON-SITE SIDEWALKS
- ON-SITE MULTI-USE TRAILS

NOTE: SIDEWALKS SHOWN ON MAJOR ROUTES ONLY FOR CLARITY.



# Dakota County Safe Routes to School

DAKOTA  
31  
COUNTY



## Recommendations

At the same time the Safe Routes Comprehensive Plan was being completed for Rosemount Elementary School, the City of Rosemount was also in the process of developing a Pedestrian and Bicycle Master Plan for the city. The following sections discuss the findings and recommendations of the Master Plan, as well as the specific short- and long-term Safe Routes recommendations for the elementary school.

### ***Rosemount Pedestrian and Bicycle Master Plan***

The planning included a walking/biking needs assessment, stakeholder meetings, and a public open house. A pedestrian-bicycle questionnaire was completed by 41 community members as part of the needs assessment, with the following key findings:

- Downtown Rosemount was identified as the number one destination for convenient walking/biking access in the city (95 percent of respondents), followed by Rosemount Middle and High School (80 percent), Shannon Park Elementary School and the Rosemount Community Center (each 72 percent), and Rosemount Elementary School (69 percent).
- Vehicle traffic volumes and speeds were the biggest deterrents to walking and biking (44 percent of respondents), followed by a lack of on-street bike lanes (42 percent).
- Intersection and street crossings were identified as the most significant improvement that could be made for both biking and walking conditions in the city (54 percent and 44 percent of respondents, respectively).

As of the time that this plan was completed, a draft Pedestrian and Bicycle Master Plan had been developed and was under review. The draft plan identifies the downtown area and Rosemount elementary/middle/high school campus as a focal point for pedestrian and bicycle activity because it provides convenient and safe routes to and through Rosemount's central core of schools, neighborhoods, and businesses. Recognizing the importance of this area, the draft plan includes a number of recommendations that are near the school campus or would directly benefit students walking or biking to school:

- Create Trail and Bikeway Connections in the School and Park Campus
  - Build trail on east side of Chili Avenue from 145<sup>th</sup> Street to Rosemount High School
  - Create pedestrian-bike plaza in front of Rosemount High School and divert traffic to the parking lot drives



# Dakota County Safe Routes to School

DAKOTA  
31  
COUNTY



- Connect existing trails in Schwarz Pond Park and school campus
- Improve pedestrian and bike access to the Community Center
- Build Underpasses at TH 3 and CSAH 42
  - Build TH 3 underpass and rest area (between Connemara Trail and 142<sup>nd</sup> Street)
  - Engage Dakota County in a discussion about acquiring land for a grade separated crossing on CSAH 42
- Install Wayfinding Signage in a Pilot Area in the Downtown and School Zone
- Create Trail Heads and Rest Areas
  - Create trail heads with bike parking, benches and water at Central Park and Schwarz Pond Park
  - Create rest areas with bike parking and benches and water on the Rosemount Elementary/Middle/High School campus and on Shannon Parkway north of 133<sup>rd</sup> Court W near Shannon Park Elementary

## ***Rosemount Elementary School Safe Routes Recommendations***

The following recommendations have been developed specifically for Rosemount Elementary School to address the identified challenges to walking and biking. The short-term recommendations are actions that could be implemented prior to or during the 2010-2011 school year, while the long-term recommendations may require policy changes, additional discussion and coordination, or significant funding sources. In addition to the recommendations, the group that should take the lead in implementing the recommendations has also been identified. Many of the Safe Routes recommendations on the elementary school site are also interrelated to the Rosemount Pedestrian and Bicycle Master Plan and close coordination with the City of Rosemount will be necessary as both plans move forward into implementation.

### Short-Term Recommendations

The short-term recommendations in this section primarily consist of low-cost improvements that can be implemented in six months, although some are depending on funding availability. The recommendations are generally prioritized in terms of actions that are easiest or most necessary to complete first. The infrastructure improvements are also summarized on the map included on page 20.

1. Maintain the current school patrol program and locations. Provide the patrol students with appropriate weather gear so that the patrols can be outdoors in dark, cold or rainy weather. Implementation lead – Rosemount Elementary.

# Dakota County Safe Routes to School

DAKOTA  
31  
COUNTY



2. Establish a permanent Safe Routes committee at Rosemount Elementary and Middle Schools to provide on-going support and organization for Safe Routes activities, including regular Walk to School days. Plan yearly activities for International Walk to School Month in October and National Bike Month in May. Implementation lead – Rosemount Elementary/Middle Schools.
3. Create a traveling “Golden Sneaker Trophy” that can be awarded to the class with the highest mileage total each week. Implementation lead – Rosemount Elementary School.
4. Create information for parents and students that communicates the benefits of walking or biking to school, as well as teaching them how to walk and bike safely. Implementation lead – Rosemount Elementary School, with assistance from Dakota County Public Health.
5. Increase the visibility of the 144<sup>th</sup> Street midblock crosswalk using mobile in-street crossing signs and installing No Parking clearance zones on both sides of the crosswalk. Implementation lead – Rosemount Elementary School and City of Rosemount.



*Example of an in-street sign at a school crossing.*

6. Consolidate all crossings of Chili Avenue between the high school and 145<sup>th</sup> Street to one location. If a crossing north of 145<sup>th</sup> Street is needed, the location should have a crosswalk and be signed as a school crossing. Implementation lead – City of Rosemount with assistance from Rosemount Elementary and Rosemount Middle Schools.

# Dakota County Safe Routes to School

DAKOTA  
31  
COUNTY



7. Improve delineation between buses and bikes on the sidewalk around the parking lot using enhanced striping, mobile signs, or flexible tubular delineators. Implementation lead – Rosemount Middle/Elementary Schools.



*Example of a flexible post delineator.*

8. Start a weekly or monthly Walk to School Day with supplemental supervision by school staff or volunteers for the designated walk and/or bike days. Implementation lead – Rosemount Elementary School.
9. Organize a walking school bus<sup>1</sup> or bike train for students to walk and bike together as a group to and from school. The best potential for this would be for students that live west or south of the school and already have informal groups walking together. Implementation lead – Rosemount Elementary.
10. Hold regular (e.g., quarterly) coordination meetings with the City of Rosemount, District 196, Rosemount Middle School, and Rosemount High School regarding walking and biking activities, funding opportunities, and planning for infrastructure improvements.

---

<sup>1</sup> A walking school bus is a group of children walking to school with one or more adults. It can be as informal as two families taking turns walking their children to school to as structured as a route with meeting points, a timetable and a regularly rotated schedule of trained volunteers.



# Dakota County Safe Routes to School

DAKOTA  
31  
COUNTY



Implementation lead – City of Rosemount, Rosemount Elementary, Middle, and High Schools, and District 196.

11. Work with neighborhood associations, senior citizen groups, or others to solicit volunteers to supervise students walking to and from the school. Implementation lead – Rosemount Elementary, with assistance from City of Rosemount and Dakota County Public Health.

## Long-Term Recommendations

The long-term recommendations included in this section primarily consist of higher cost improvements or actions that would require a significant policy change, either of which would be expected to take longer than six months to occur. These recommendations are generally prioritized in order of importance, however funding availability may mean that the highest priority recommendations are not the first to be implemented. The infrastructure recommendations are also summarized on page 20.

1. Pursue recognition for Rosemount as a Bicycle Friendly Community through the League of American Bicyclists. Implementation lead – City of Rosemount, with support from Dakota County and District 196.
2. Enact a Safe Routes to School policy to guide future walking/biking programs and projects. Implementation lead – District 196, City of Rosemount, and Dakota County.
3. Designate a Safe Routes coordinator at the district level and each of the individual elementary and middle schools in the district. The district-level coordinator would share information and coordinate Safe Routes activities and best practices among all the District 196 schools. Implementation lead – District 196.
4. Develop a Safe Routes website for Rosemount Elementary School that provides walking/biking route information as well as other information, such as the volunteer schedule for adult crossing guards. Implementation lead – Shannon Park.
5. Install additional bike racks when the capacity of the existing racks is reached. Implementation lead – Rosemount Elementary.



# Dakota County Safe Routes to School

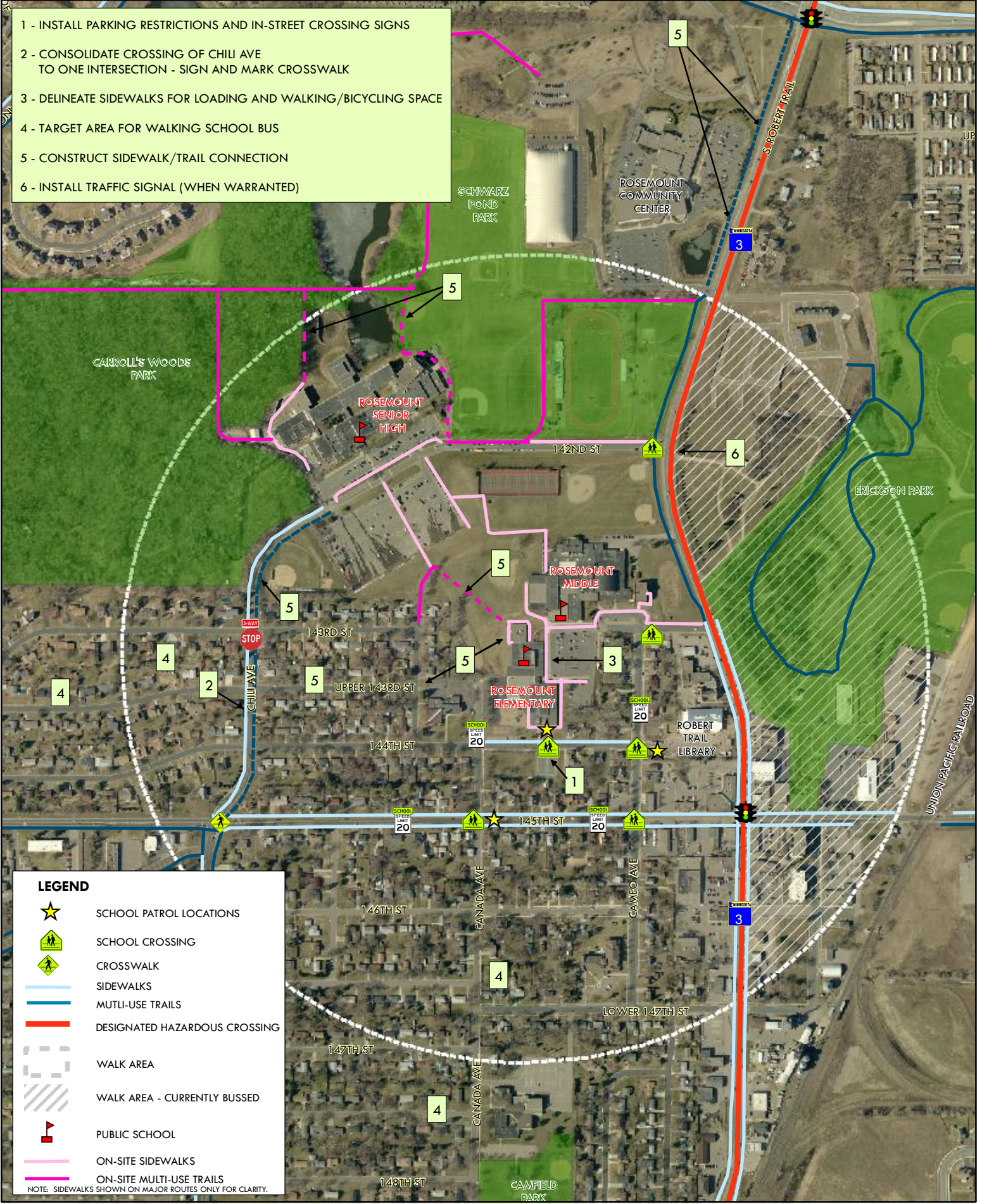
DAKOTA  
31  
COUNTY



6. Construct sidewalk or trail to connect the elementary/middle schools to 143<sup>rd</sup> Street or Upper 143<sup>rd</sup> Street. The connection should be the same location as the designated crossing on Chili Avenue. Implementation lead – District 196.
7. Construct sidewalk on 143<sup>rd</sup> Street or Upper 143<sup>rd</sup> Street between the Elementary/Middle Schools and Chili Avenue. The connection should be the same location as the designated crossing on Chili Avenue. Implementation lead – City of Rosemount.
8. Construct paved multi-use paths to connect the existing trails in Schwarz Pond Park to the high school/middle school/elementary school campus. Implementation lead – District 196.
9. Construct approximately 1,500 feet of trail on the west side of TH 3 (Robert Trail) between existing trail endpoints at Connemara Trail and 140<sup>th</sup> Circle. Implementation lead – City of Rosemount.
10. Construct trail on the east side of Chili Avenue between 145<sup>th</sup> Street and Rosemount High School. Implementation lead – City of Rosemount.
11. Install pedestrian/bicycle wayfinding signing through the school district campus to provide better connectivity to the rest of the community and sidewalk/trail network. Implementation lead – City of Rosemount.
12. Continue to monitor the need for a traffic signal at the TH 3 (Robert Trail)/142<sup>nd</sup> Street intersection. Implementation lead –City of Rosemount.
13. Continue to monitor safety and capacity on Chili Avenue and at the Chili Avenue/Chippendale Avenue/145<sup>th</sup> Street intersection. Implementation lead – City of Rosemount.
14. Consider adding walking and bicycling curriculum to physical education classes. Implementation lead – Rosemount Elementary School/District 196.



- 1 - INSTALL PARKING RESTRICTIONS AND IN-STREET CROSSING SIGNS
- 2 - CONSOLIDATE CROSSING OF CHILI AVE TO ONE INTERSECTION - SIGN AND MARK CROSSWALK
- 3 - DELINEATE SIDEWALKS FOR LOADING AND WALKING/BICYCLING SPACE
- 4 - TARGET AREA FOR WALKING SCHOOL BUS
- 5 - CONSTRUCT SIDEWALK/TRAIL CONNECTION
- 6 - INSTALL TRAFFIC SIGNAL (WHEN WARRANTED)



**LEGEND**

- ★ SCHOOL PATROL LOCATIONS
- 🚶 SCHOOL CROSSING
- 🚶 CROSSWALK
- 🚶 SIDEWALKS
- 🚶 MUTLI-USE TRAILS
- 🚶 DESIGNATED HAZARDOUS CROSSING
- 🚶 WALK AREA
- 🚶 WALK AREA - CURRENTLY BUSSED
- 🚶 PUBLIC SCHOOL
- 🚶 ON-SITE SIDEWALKS
- 🚶 ON-SITE MULTI-USE TRAILS

NOTE: SIDEWALKS SHOWN ON MAJOR ROUTES ONLY FOR CLARITY.



# Dakota County Safe Routes to School

DAKOTA  
31  
COUNTY



## ***Funding and Implementation***

Funding for the various recommended projects may come from a variety of sources depending on the type of project and who is implementing it. Some potential funding opportunities that currently exist and may be used to fund these recommendations include, but are not limited to:

- Statewide Health Improvement Program funds, which are available through several programs administered by Dakota County Public Health:
  - Safe Routes to School mini-grants
  - Active Living grants, which are available to cities in Dakota County, but may be used to fund improvements on school sites
  - Assistance with preparation of infrastructure grant applications. Cities in Dakota County can submit infrastructure projects and the County's consultant will assist in identifying potential funding sources and preparing applications.
- Blue Cross Blue Shield of Minnesota
- Federal Transportation Enhancement (TE) funds through the Metropolitan Council (next cycle will be in 2011 for funds to be used in 2015-2016)
- Federal Safe Routes to School funds through the Minnesota Department of Transportation <sup>2</sup>

Other sources of funding, as identified in the City of Rosemount's Pedestrian and Bicycle Master Plan include:

- Partnerships  
Partnerships with public and private organizations to provide assistance with design, outreach and maintenance. Potential partnership organizations, in addition to the City of Rosemount and Rosemount High School that participated in the development of this plan, may include Dakota County, Dakota County Active Living Partnership, Rosemount Cycling Club, and area businesses.

---

<sup>2</sup> The federal Safe Routes to School program was funded via SAFETEA-LU legislation through fiscal year 2009. Future funding will be dependent on passage of the Federal Surface Transportation Reauthorization Bill, which is currently being discussed in the United States Congress.

# Dakota County Safe Routes to School

DAKOTA  
31  
COUNTY



- Donations  
Private donations from individuals or area corporations or donations of labor from recreation clubs or use agreements or trail easements from landowners. Programs such as “adopt-a-trail” by an organization, business, or individual provide have successfully been used in many communities to help with maintenance tasks and raise awareness.
- Grants  
Grants are often available to governmental agencies (city and county), but may also be available directly to Rosemount High School and District 196. As priority projects are identified, the City of Rosemount, Rosemount High School, District 196, and Dakota County will need to closely coordinate their efforts to maximize potential grant funding opportunities. For a full listing of potential grant sources, refer to the City of Rosemount Pedestrian and Bicycle Master Plan.

No one of the E’s of Safe Routes to School will by itself increase walking and biking, which emphasizes the need for cooperation among school, city, county and other agencies to implement change.