

# 2025 ANNUAL REPORT

DAKOTA COUNTY PUBLIC HEALTH



## 2025 HIGHLIGHTS

### **SERVICE - We make helping others a top priority**

In September, Dakota County Public Health responded to two lab-confirmed measles cases that ultimately grew to 10. Staff quickly worked closely with the Minnesota Department of Health, local schools, and county partners to identify additional cases and exposures. This response required more than 400 follow-up calls and guidance for individuals without immunity to stay home. Through coordinated efforts across case investigation, contact tracing, and school communications, an estimated 75 additional cases were prevented, demonstrating the critical role of local public health in protecting community health.

### **INTEGRITY - We are honest, fair, and accountable**

Dakota County Public Health's WIC team received the Gold-level Breastfeeding Award of Excellence in recognition of its high-quality, accountable service to participants. This national award highlights programs that set a strong standard for breastfeeding promotion, education, and support. The team's work ensures families receive accurate information, consistent guidance, and equitable access to resources.

### **PEOPLE - We value and respect every individual**

Dakota County Public Health expanded its Family Health services with the launch of Iftin Family Services. This home visiting program was designed to address health disparities affecting East African families. In its first year, the program served 21 families with a 100 percent retention rate, reflecting strong trust and engagement. In partnership with Queen Health Consulting, staff also hosted four multilingual community listening sessions to ensure services are culturally responsive and shaped by the voices of the community.

### **INNOVATION - We challenge ourselves to do things better**

Over the past year, Dakota County Public Health partnered with Dakota County Library to expand access to life-saving resources by establishing all library locations as Naloxone Access Points. Library staff were trained on naloxone basics to confidently support residents and reduce stigma around its use. As a result of this collaboration, more than 1,200 naloxone kits were distributed across ten library locations. This innovative approach meets people where they are, increasing access to overdose prevention tools and strengthening community-wide response efforts.



#### OUR VISION

A healthy, thriving, and equitable community for all in Dakota County.

#### OUR MISSION

Collaborate to prevent disease, promote wellbeing, and protect health and the environment.

# BY THE NUMBERS

**6,431 families** were contacted by Child and Teen Checkups staff to discuss the importance of well child visits

**833** radon test kits distributed to keep homes safe

Over **137** Child and Teen Checkups outreach events provided health information and resources that reached over **7,854** individuals

**10** public school districts were supported to promote equity-focused healthy eating, active living, and mental health/well-being projects

**4** AmeriCorps members served a total of **3,088** hours in 2025 for Public Health

**9,928** client visits made by a family health nurse or a family support specialist

**3,000+** Naloxone doses distributed by Public Health and the Dakota County Libraries

**533** children participated in the Follow Along Program

**5,811** phone calls from the public were handled by front desk staff to help address their needs

**8,666** individuals received food benefits, nutrition education, and lactation support through the Women, Infants and Children (WIC) Program

**5,015** Immunizations administered

**486** families served through the WIC Breastfeeding Peer Counselor Program

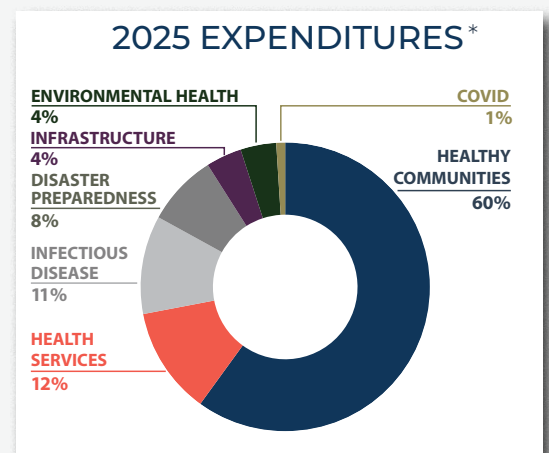
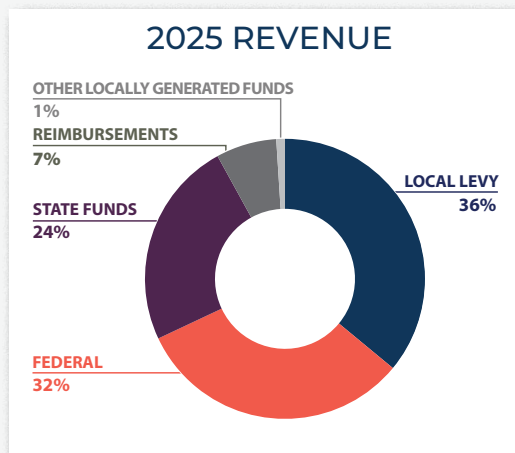
**95** vaccine clinics were held and served **1,486** people.

Staff provided training to over **108** people to increase access to overdose prevention resources and reduce stigma of substance use in our communities

## KEY FINANCIAL STATS

2025 Budget:  
\$16,442,460

TOTAL FTEs = 131.2



\*Expenditures are reported by the state's [areas of public health responsibility](#) within the Local Public Health Act.

