



WELCOME

to the
County Highway 42
MODERNIZATION PROJECT

Open House

County Highway 42 MODERNIZATION PROJECT

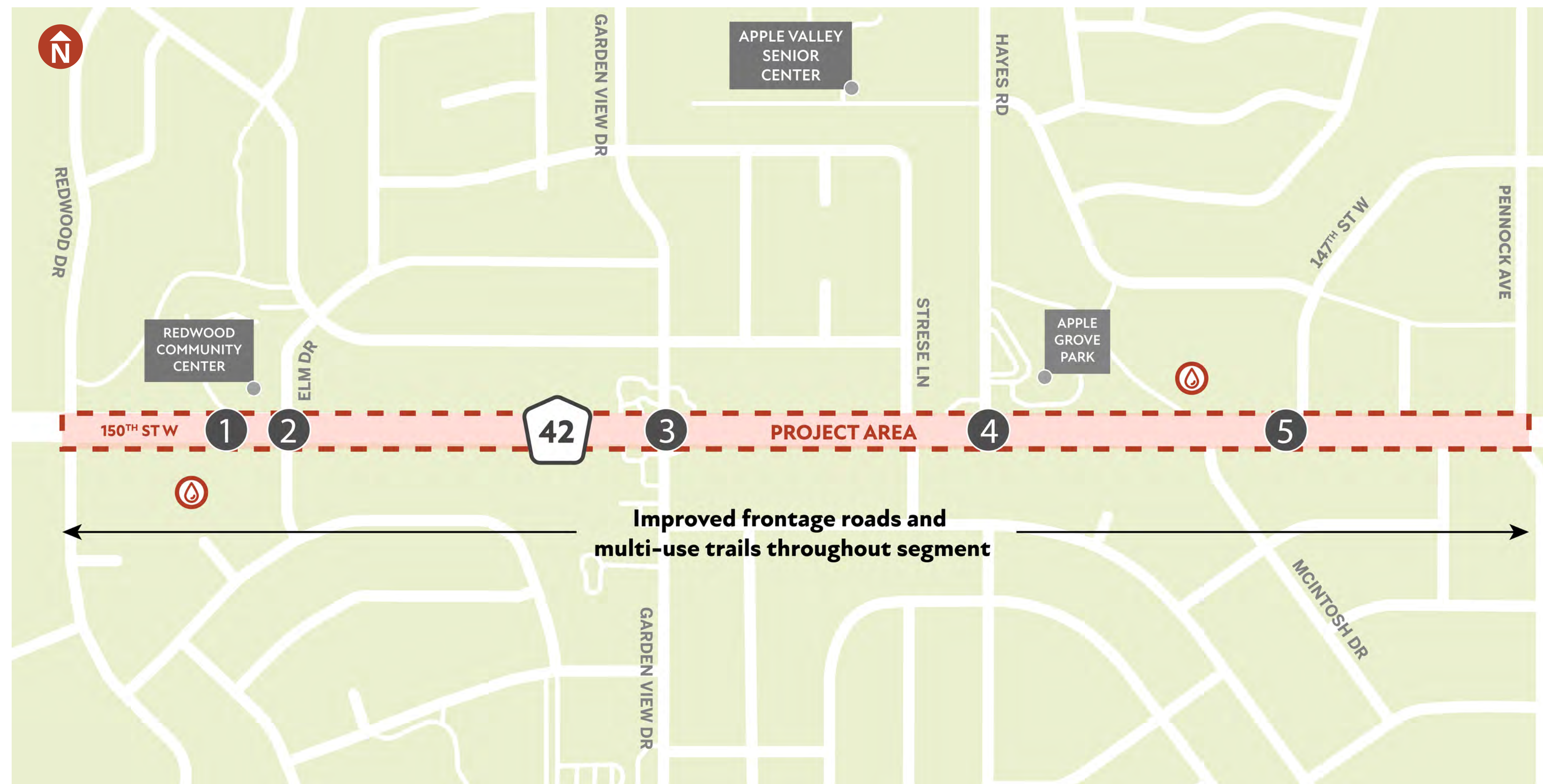


Project Needs and Proposed Improvements



Project Goals

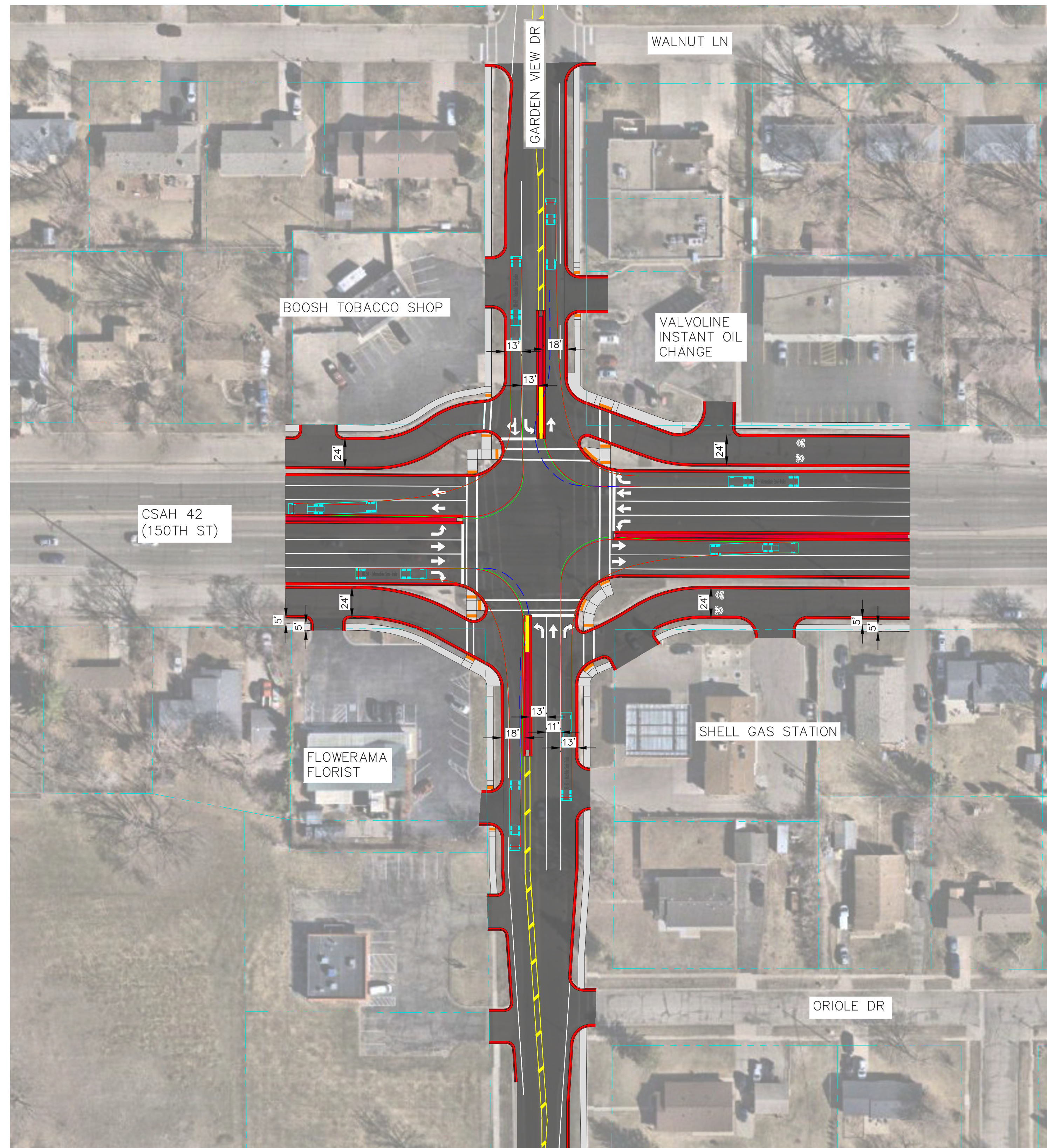
- ★ Replace obsolete infrastructure
- ★ Improve travel efficiency
- ★ Improve safety for all travelers
- ★ Begin construction by 2027
- ★ No expansion of County Highway 42 through lanes
- ★ Provide pedestrian/bicycle connectivity



- 1 New underpass under Co Hwy 42** for pedestrians and bicyclists to cross to each side of Redwood Park concurrent with
 - 2 Elm Drive modification** to manage left turns; remove the traffic signal
 - 3 Garden View Drive reconstruction** to improve turn lanes, pedestrian crossings; replace signals
 - 4 Hayes Road reconstruction** to improve turn lanes, pedestrian crossings, and the retaining wall; replace signals
 - 5 147th Street reconstruction** to manage left turns and improve multi-use trails east to Pennock Avenue
- Co Hwy 42 reconstruction**, including the frontage roads and underground utilities
- Potential stormwater treatment area**

County Highway 42 MODERNIZATION PROJECT

Garden View Dr. Intersection Recommendation

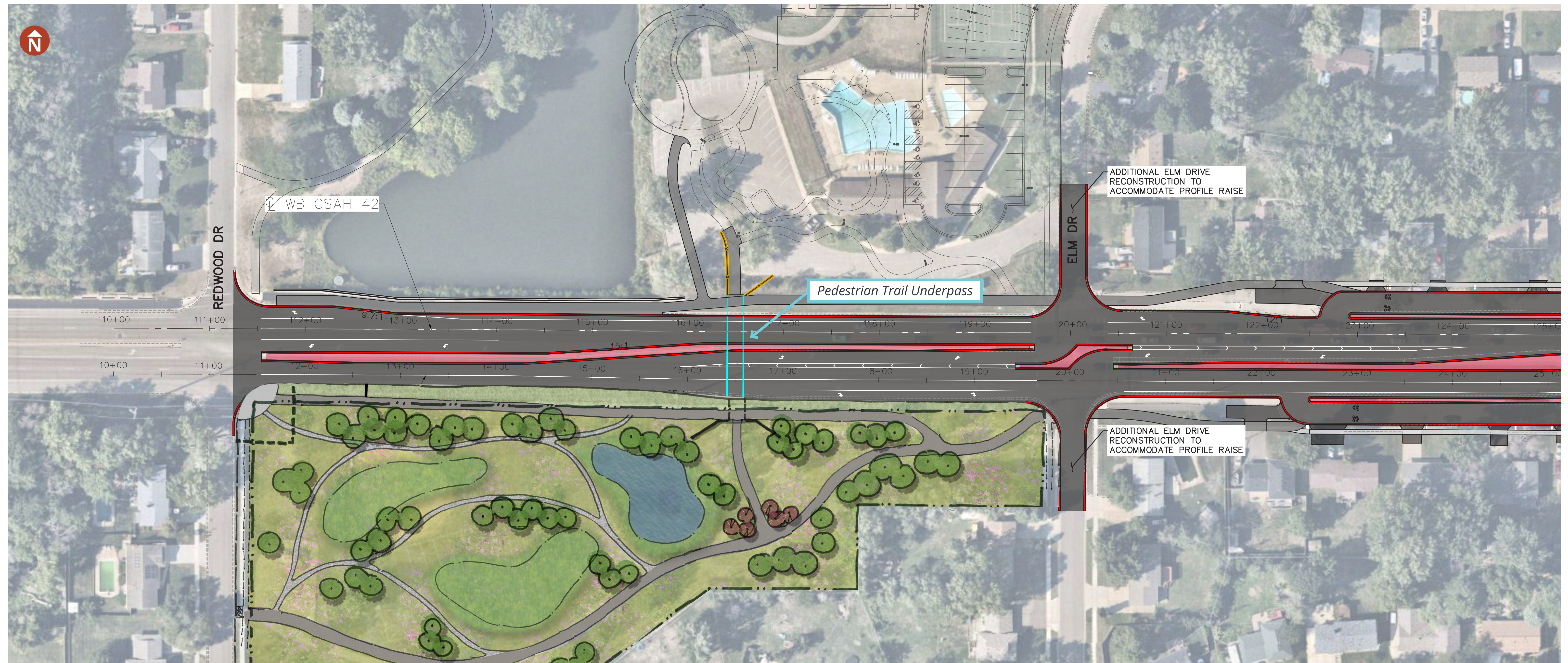


WHY?

- ✓ Median helps limit expansion while reducing traffic conflicts
- ✓ Three lanes on northbound Garden View Dr. approach
(Left + Thru + Right)
- ✓ Signal modernization such as the use of a flashing yellow arrow
- ✓ Sidewalks continue though the area
- ✓ Crosswalks along Hwy 42, guiding across Garden View Dr.
- ✓ Large trucks may use the median ends to maneuver
- ✓ Alleviates need for users of Garden View Dr to leave a gap open for frontage road vehicles

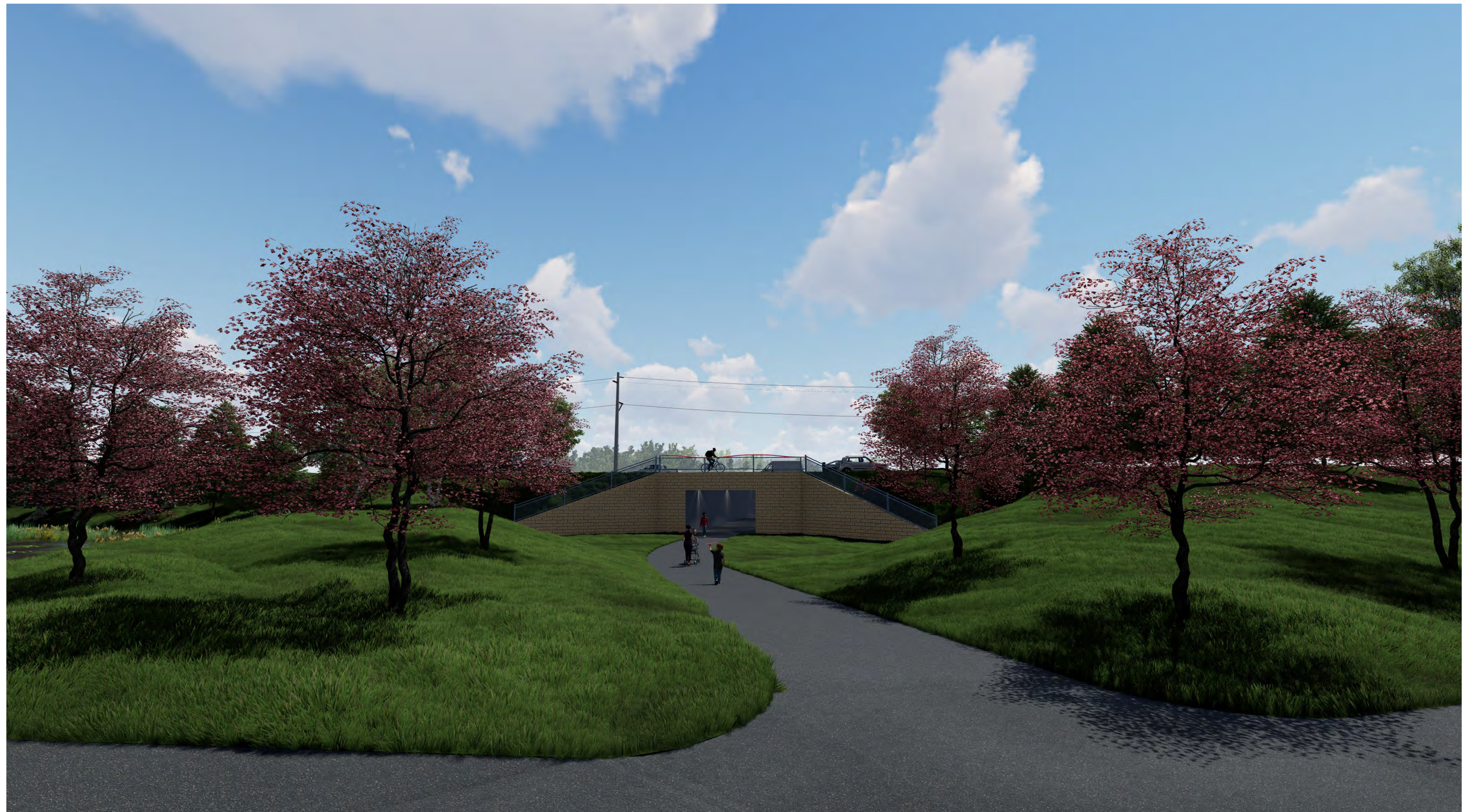
Elm Dr./Redwood Park Pedestrian Trail Underpass and Master Plan

- Pedestrian trail underpass to be located east of Redwood Pond
- Location coordinated with City Parks' new design for Redwood Park
- City and County working together on stormwater management alternatives along the south side of Hwy 42



County Highway 42 MODERNIZATION PROJECT

County Highway 42 from Redwood Park Visualization



County Highway 42 MODERNIZATION PROJECT

Frontage Road Design



Recommended design for frontage roads from Elm Dr. to near Pennock Ave.

- Two-way frontage roads
- Shared bikeways, marked on the frontage roads
- 5-foot sidewalk

OTHER NOTES:

- ✓ One-way is no longer being considered
- ✓ Sidewalks would be added to the north side frontage road, and existing sidewalks would be replaced on the south side
- ✓ Sidewalks will continue through the Garden View Dr. intersection
- ✓ Aging underground utility structures must be replaced, so frontage roads will need full reconstruction
(work to begin in 2027)



1 Reconstruct portions of driveway

2 5' wide sidewalk

3 5' wide boulevard

4 Sloped concrete

County Highway 42 MODERNIZATION PROJECT

Hayes Road – Existing and Proposed from Frontage Road



1 Pedestrian ramp access to CSAH 42

County Highway 42 MODERNIZATION PROJECT

Hayes Road – Existing and Proposed from County Highway 42



- ① Pedestrian ramp access to frontage road
 - ② In-place GRE Pole
 - ③ Cast-in-place wall with formliner and ornamental railing
- Limits: from Kent Lane to 147th Street
 - Closure of the Kent Lane opening to Co 42



County Highway 42 MODERNIZATION PROJECT

Schedule

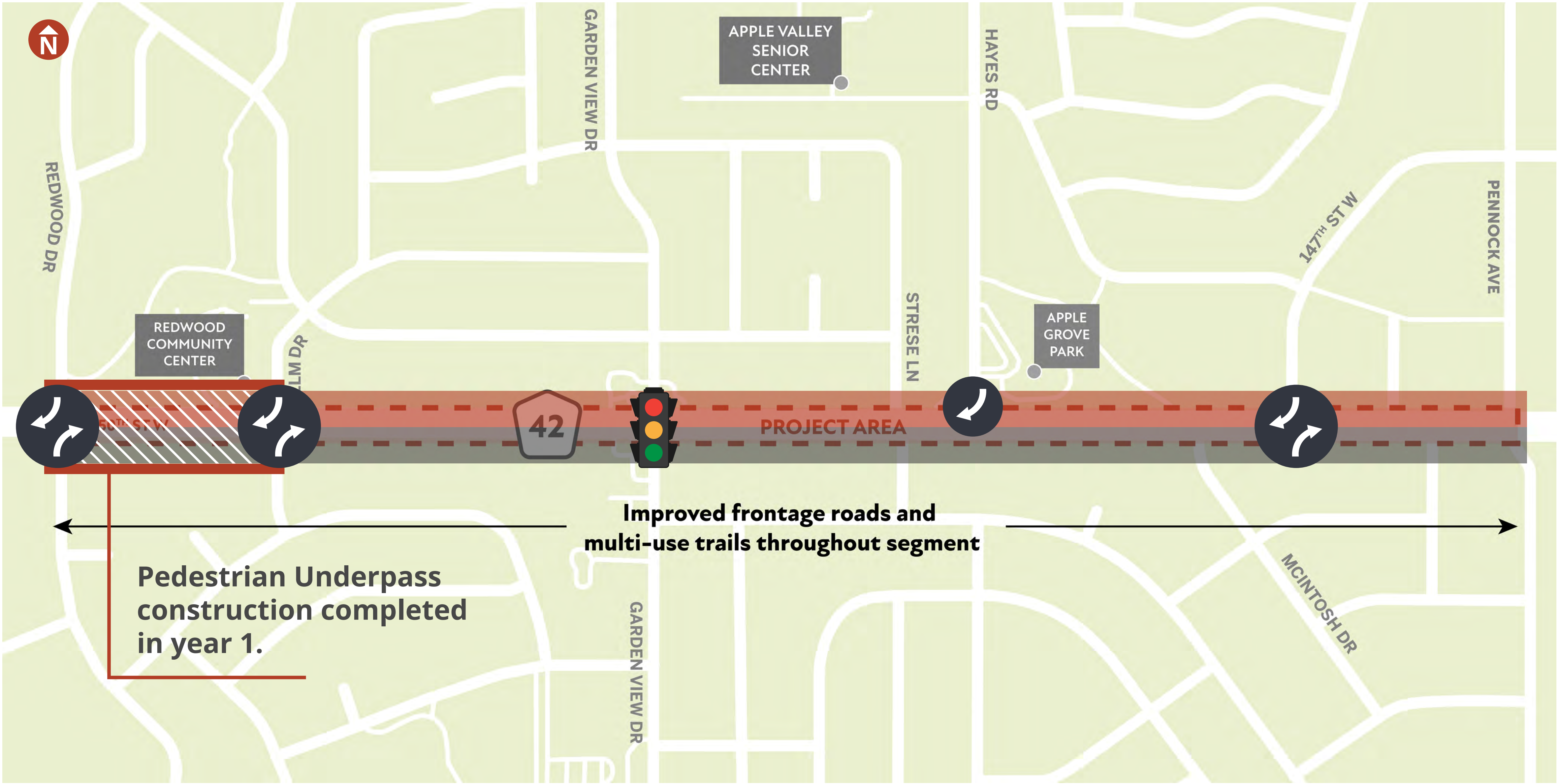


	2023				2024				2025				2026				2027				2028			
PRELIMINARY DESIGN Fall 2023 - Spring 2025																								
OPEN HOUSE #1 Fall 2023																								
OPEN HOUSE #2 Summer 2024																								
OPEN HOUSE #3 Summer 2025																								
FINAL DESIGN/RIGHT-OF-WAY ACQUISITION Spring 2025 - Winter 2026																								
OPEN HOUSE #4 Winter 2026																								
CONSTRUCTION START 2027																								

Construction Phasing

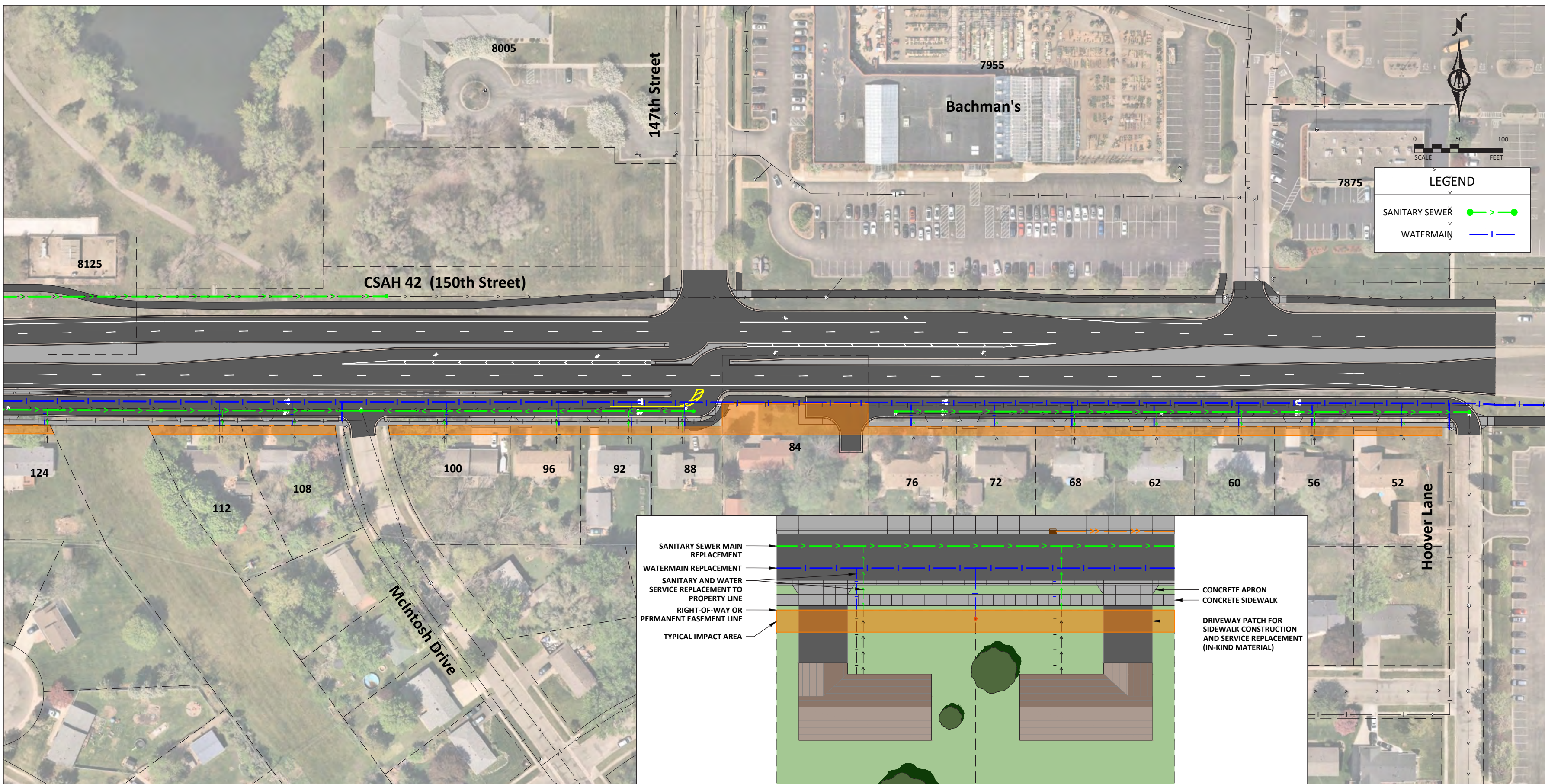
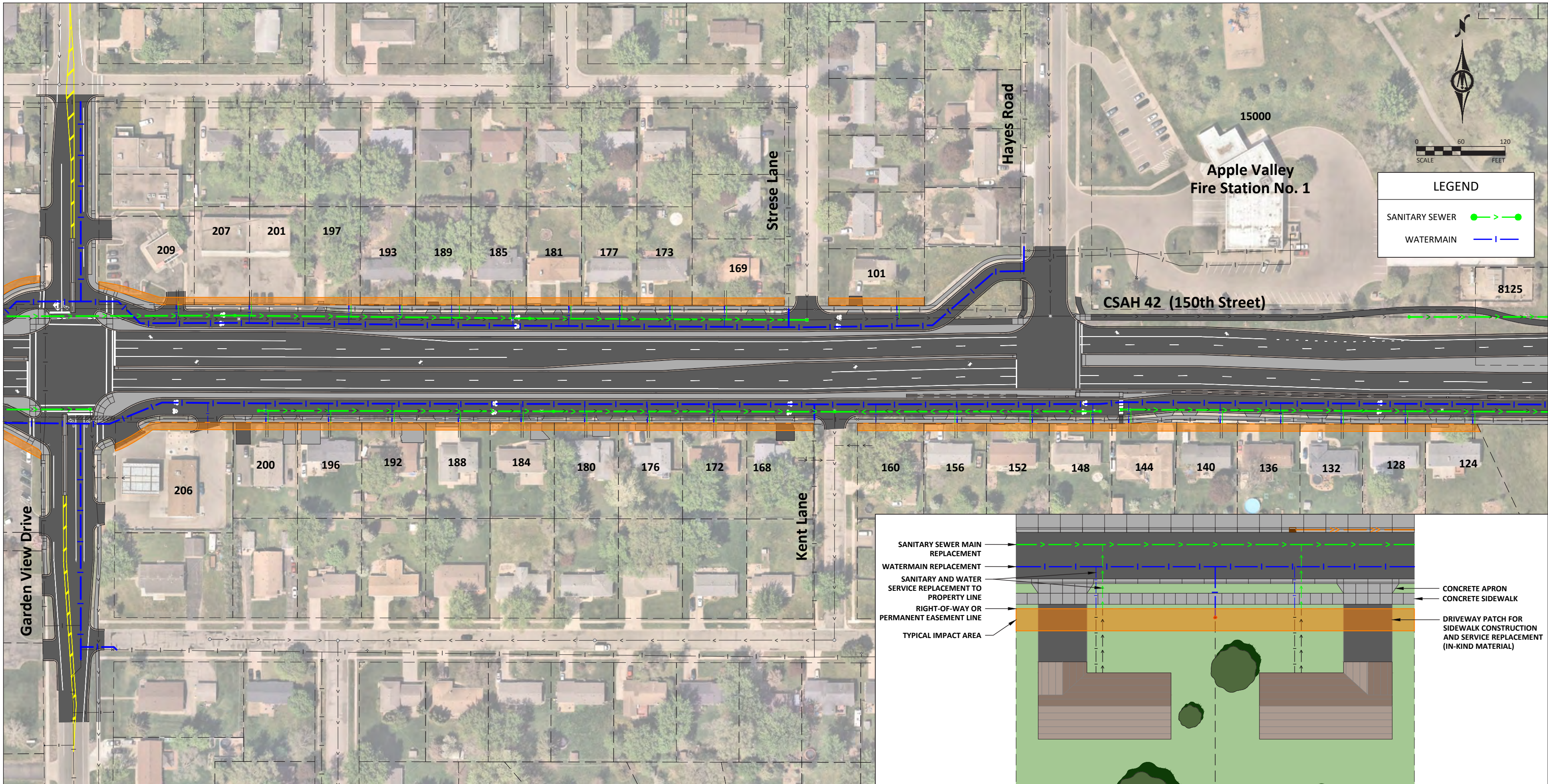
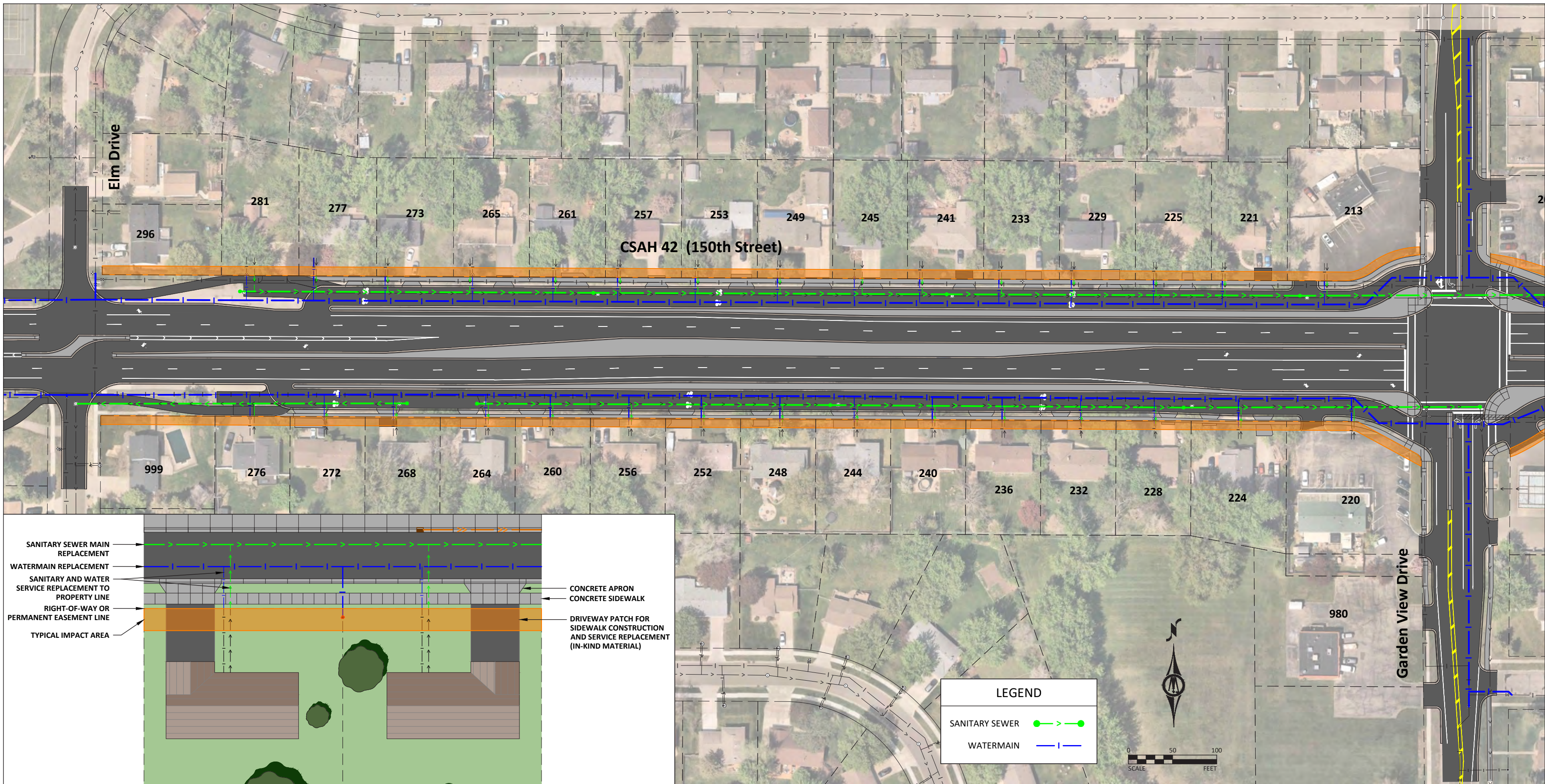


- Year 1
- Year 2
- ↻ Right-in/Right-out Access at intersection
- ↷ Right-in Access at intersection
- 🚦 Temporary Signal During Construction



- ✓ Two-year construction time-line anticipated (2027-2028)
- ✓ Two-way traffic maintained through duration of construction
- ✓ Garden View Drive intersection to include a temporary traffic signal during construction
- ✓ Adjustments to side-street access and signal timing during construction
- ✓ Regional detour route developed for regional traffic during construction

Sanitary Sewer and Watermain



County Highway 42 MODERNIZATION PROJECT