



County Road 26 (TH 3 to TH 52) Improvement Project

Open House #2

April 1st, 2025



Purpose and Need

- This project will
 - Reconstruct the roadway to accommodate future traffic volumes and replace existing pavement and base
 - Add drainage, utility extensions, and a multiuse trail
 - Manage driveway and roadway access points
 - Modify existing hilly profile to improve safety



CSAH 26 & Arlene Avenue Intersection

Public Engagement Update

- Open House #1 held October 8th, 2024
 - Introduced CP 26-60 (TH 3 to Babcock) and CP 26-68 (Babcock to Cahill) projects
 - Presented purpose and need, traffic data and analysis, roadway improvements, and alternatives being considered
 - Collected feedback on different intersection options
- Project team met with Arlene Avenue and Athena Way neighborhood in January 2025



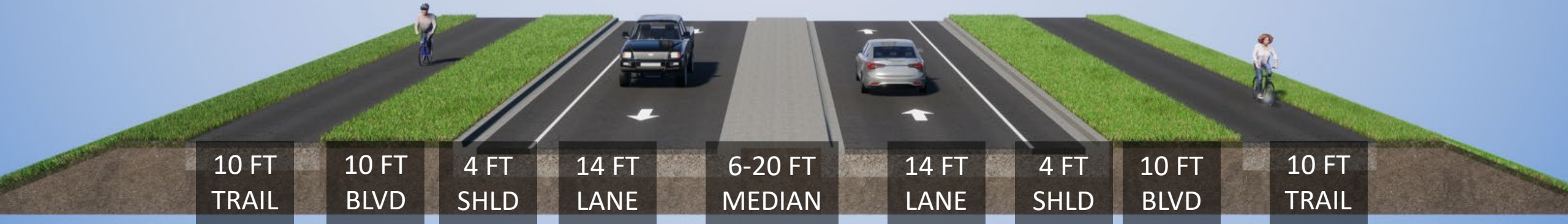
Feedback Received

- Concerns about intersection changes at Athena Way, Arlene Avenue, and the golf course and how they will affect local residents
 - Interest in a roundabout at Babcock Trail
- Questioning the need for trails on both sides of CSAH 26
- Concerns about impacts to vegetation and private property



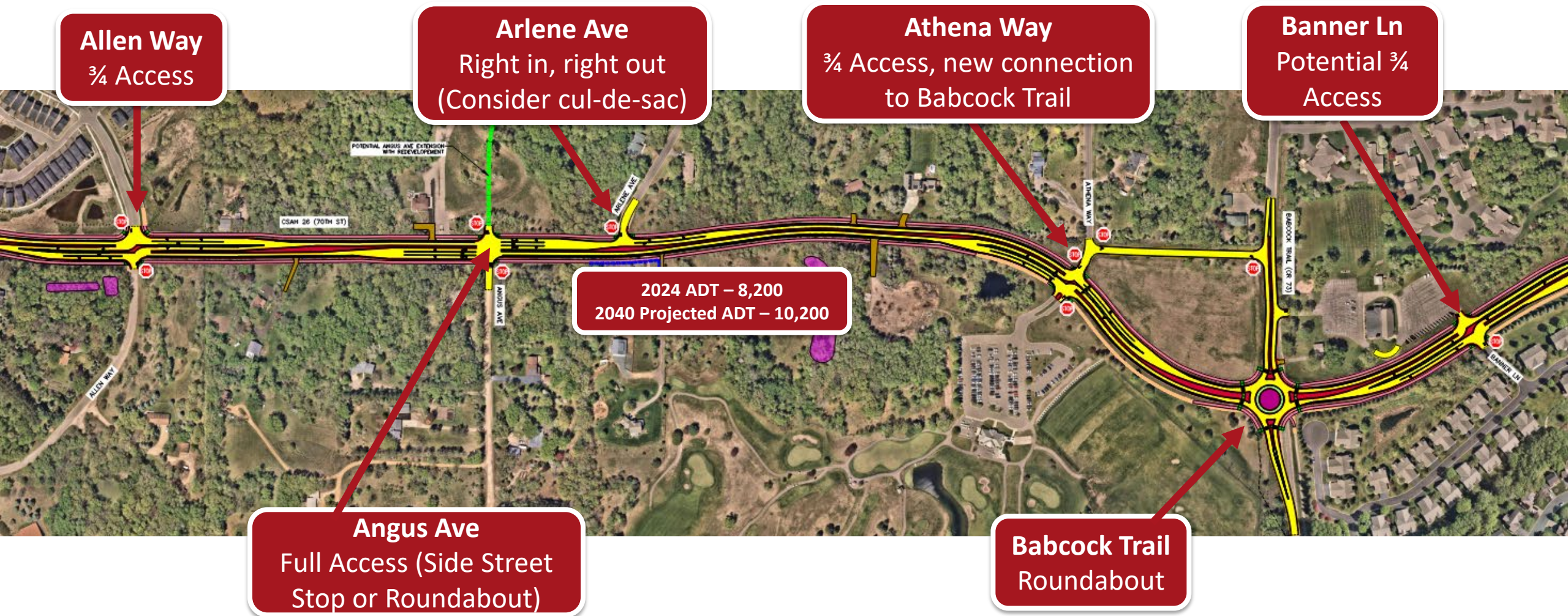
Proposed Improvements

Proposed Roadway Typical Section



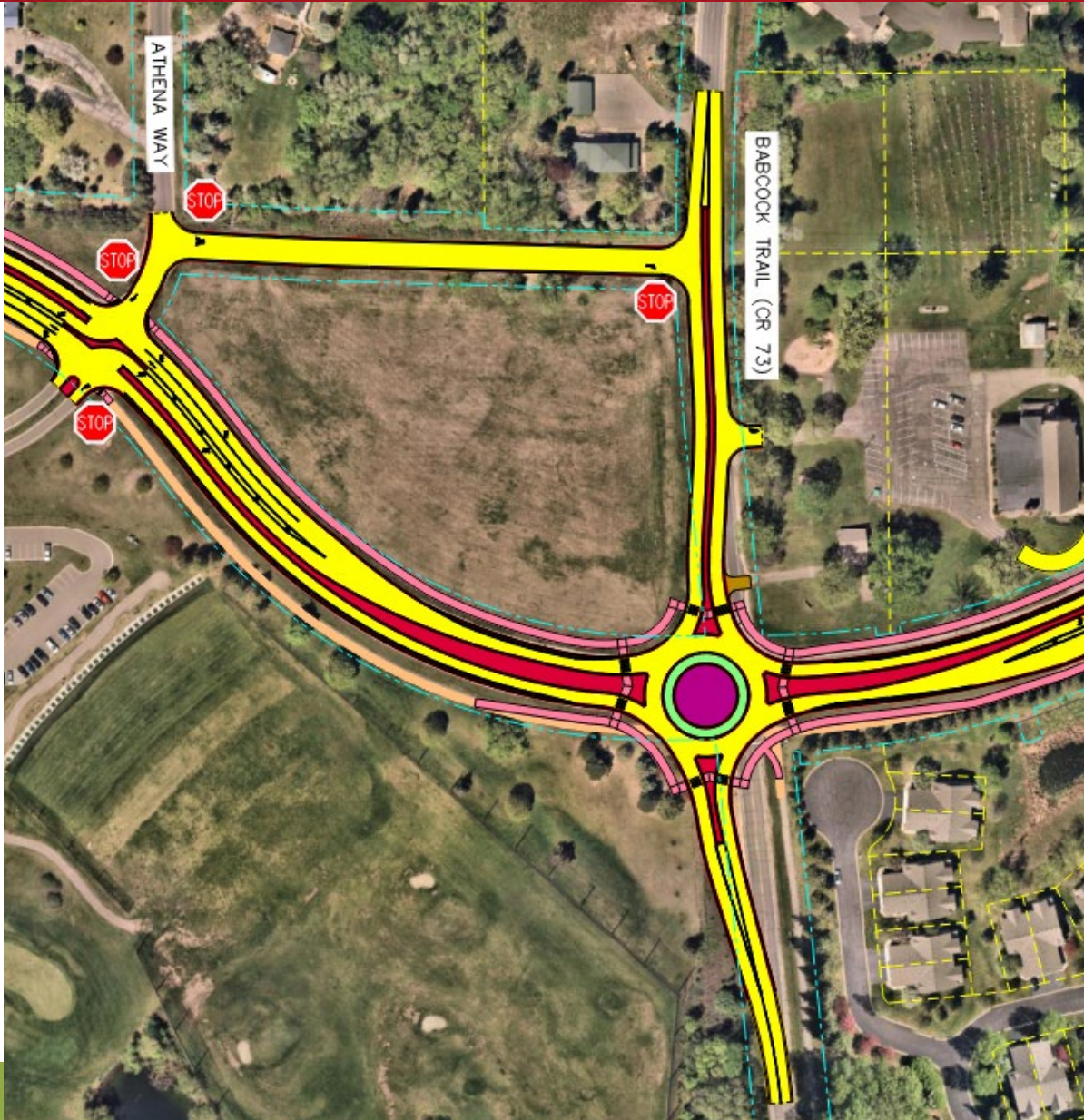
- One through lane in each direction
- Addition of curb and gutter with shoulders
- Multi-use trail on both sides of the roadway
- Right and left turn lanes at City street intersections
- Retaining walls being evaluated

Intersection Access Management Changes



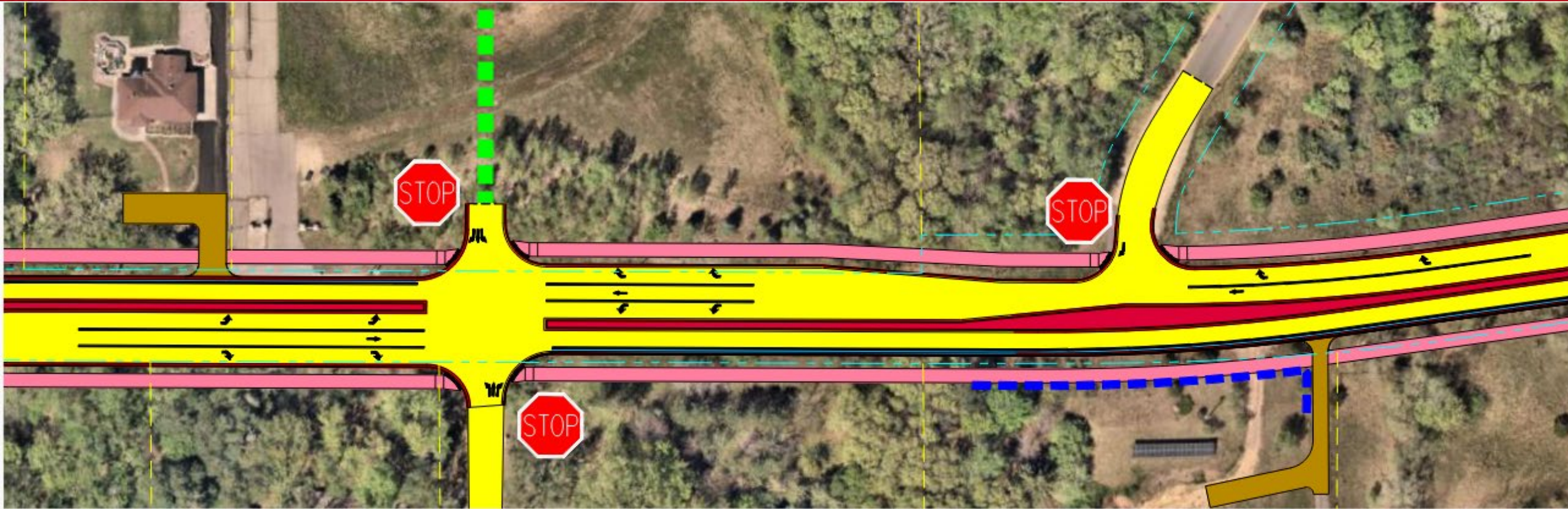
- Additional coordination with MnDOT TH 52 interchange project necessary for further consideration of access management changes at Banner Lane

Why a roundabout at Babcock Trail?



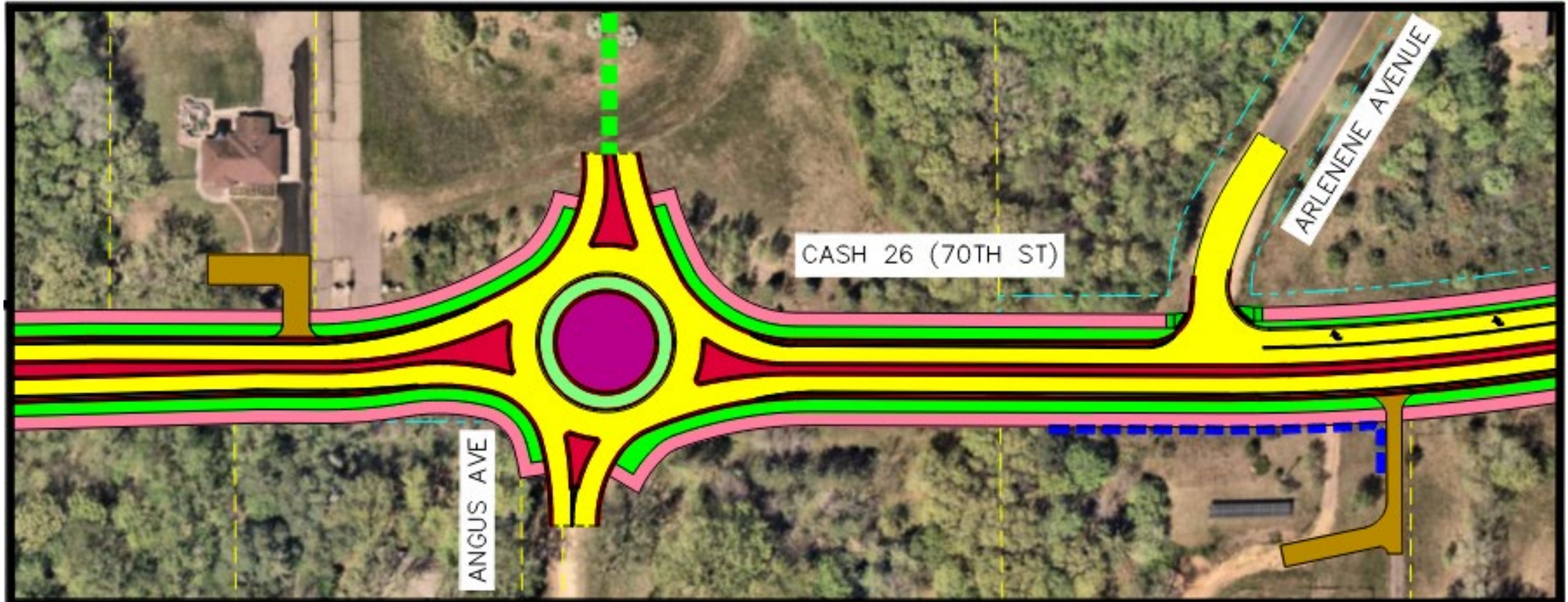
- Improves traffic operations at intersection compared to all-way stop
- Provides safe and efficient pedestrian crossings for trails on both sides of CSAH 26
- Provides turn around to address intersection access restriction for westbound traffic from golf course

Angus Avenue Side Street Stop Concept



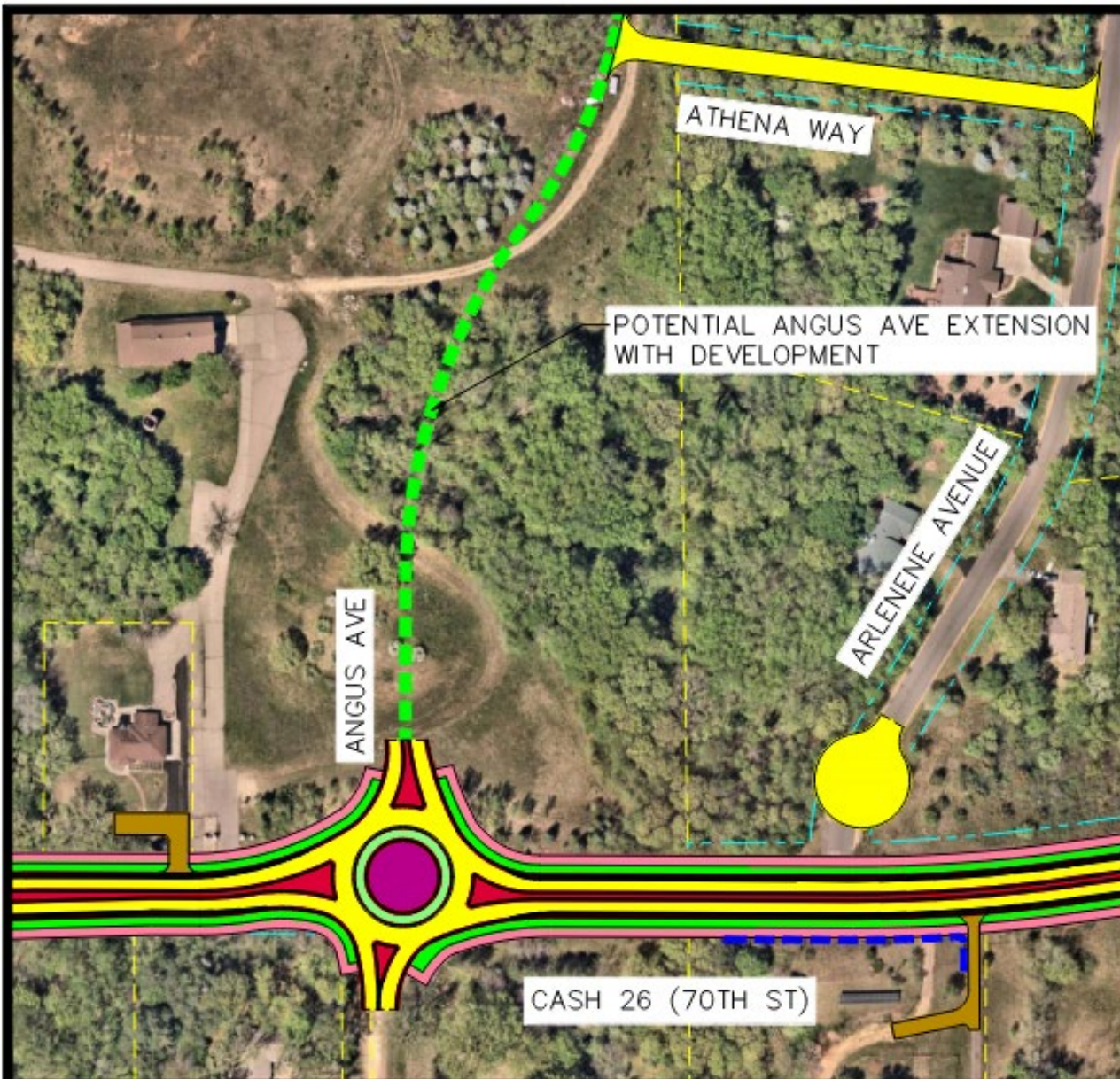
- Full access intersection with Angus Avenue
- Right-in/Right-out access control at Arlene Avenue
- Further consideration required for U-Turns at Angus Avenue

Angus Avenue Roundabout Concept 1



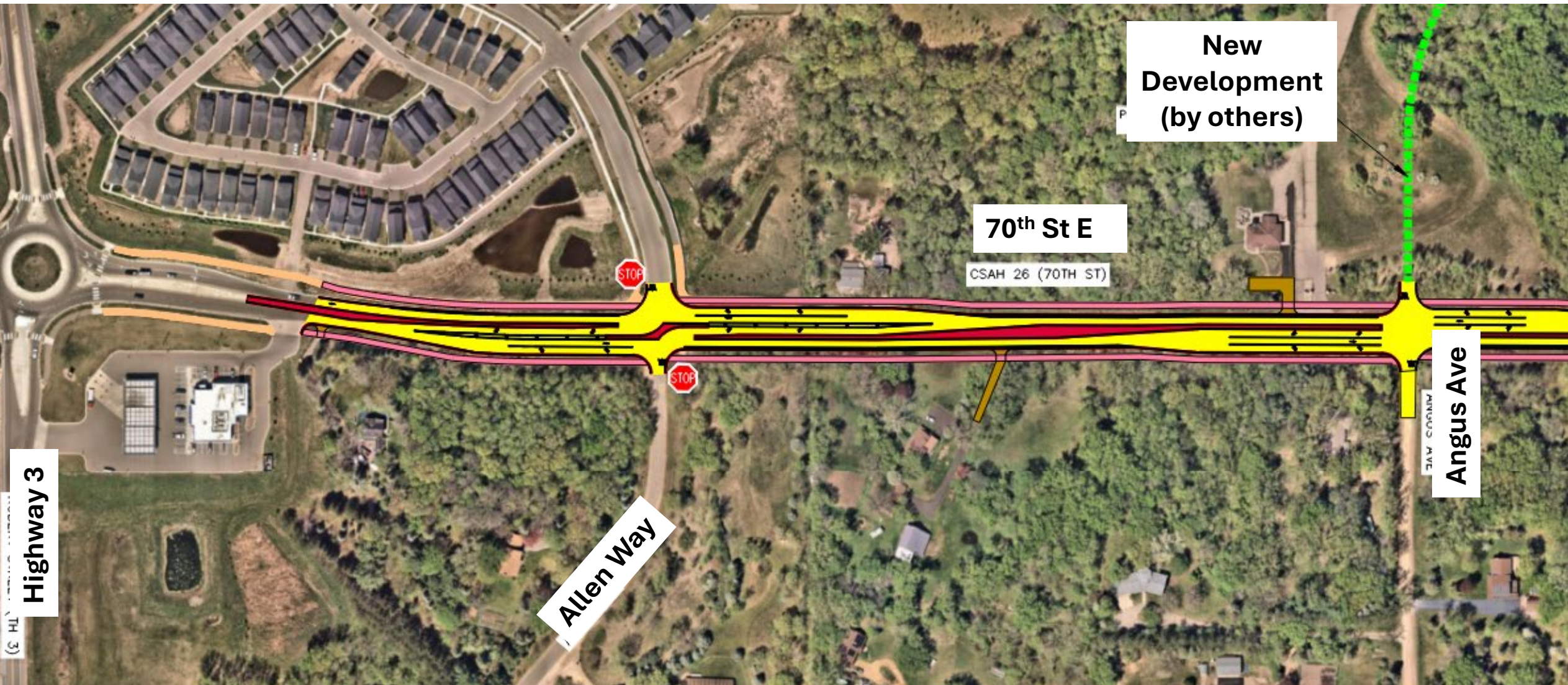
- Roundabout at Angus Avenue
- Right-in/Right-out access control at Arlene Avenue
- Safely accommodates U-turn movements at Angus Avenue

Angus Avenue Roundabout Concept 2



- Roundabout at Angus Avenue
- Cul-de-sac at Arlene Avenue
- Athena Way extension to Angus Avenue

Allen Way and Holiday Gas Station Access Management



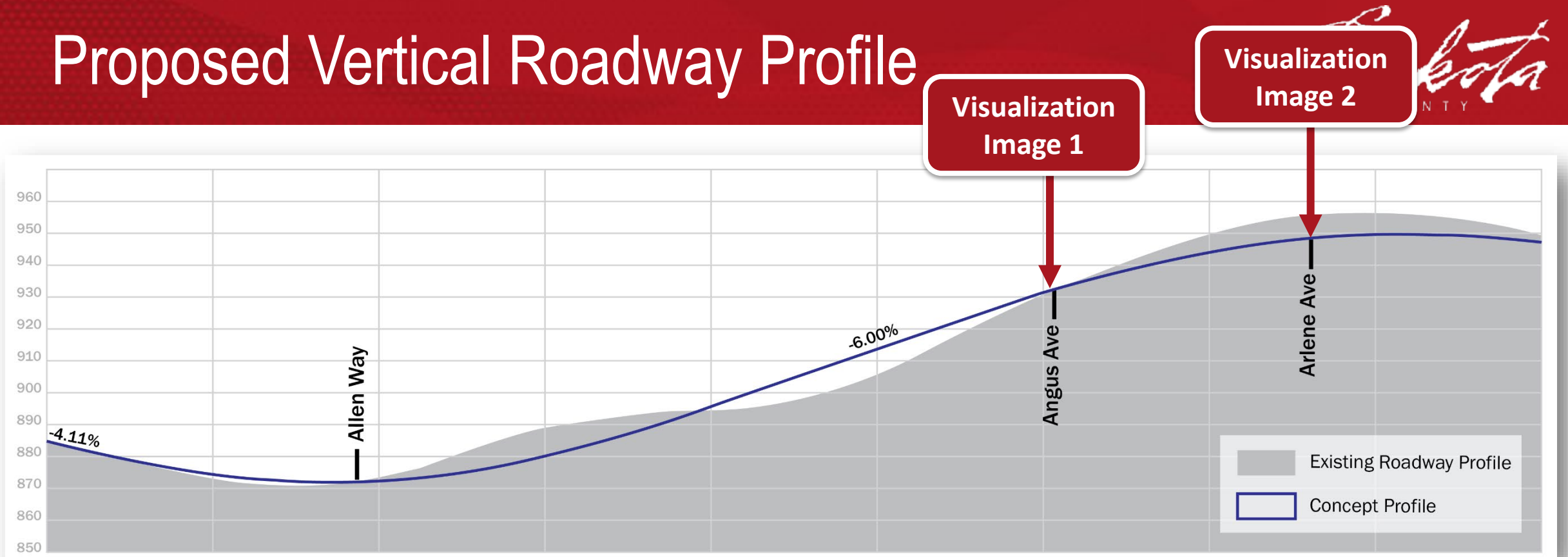
What is a Vertical Profile?



Vertical Profile: Elevation change along a roadway

Sharp curves reduce visibility for drivers and lead to safety issues. They can also produce a “rolling” feeling while driving.

Proposed Vertical Roadway Profile



The project team evaluated 4 concepts. This concept was chosen as it:

- Improves sight distance issues at Arlene Avenue and Angus Avenue
 - Existing Angus Avenue Sight Distance - 419 ft, Proposed Angus Avenue Sight Distance - 607 ft
- Smooths out the existing rolling hills
- Supports constructability of all driveway and street connections
- Considers earthwork removal and infill volumes

Angus Avenue Sight Distance Visualization

Image 1



Arlene Avenue Sight Distance Visualization Image 2



Current



Proposed



Improved Sight Distance
With Hill Removed and
Roadway Lowered



Schedule and Next Steps

