

Diffley Road & Braddock Trail

Follow-Up Informational Meeting

February 11, 2019



EAGAN

Presentation Outline

- * City, County & ISD 196 Staff Introductions
- * Original Signal Project at Diffley Road & Braddock Trail
- * Highway Safety in Dakota County
- * What We Heard from You
- * Q & A of issues from Neighborhood Meeting
- * Next Steps

Diffley Road & Braddock Trail Signal Project

Reason for Project:

- Pedestrian Safety Concerns
- Vehicular Mobility & Delay Concerns

Project Scope:

- Signal Replacement
- Modify Geometry: more expected alignment north & south
- Add left turn phasing: Protected lefts when needed & permissive low volume times
- Pedestrian Improvements: ADA, visibility, better address conflicting traffic

Originally planned for 2019 - Not currently moving forward

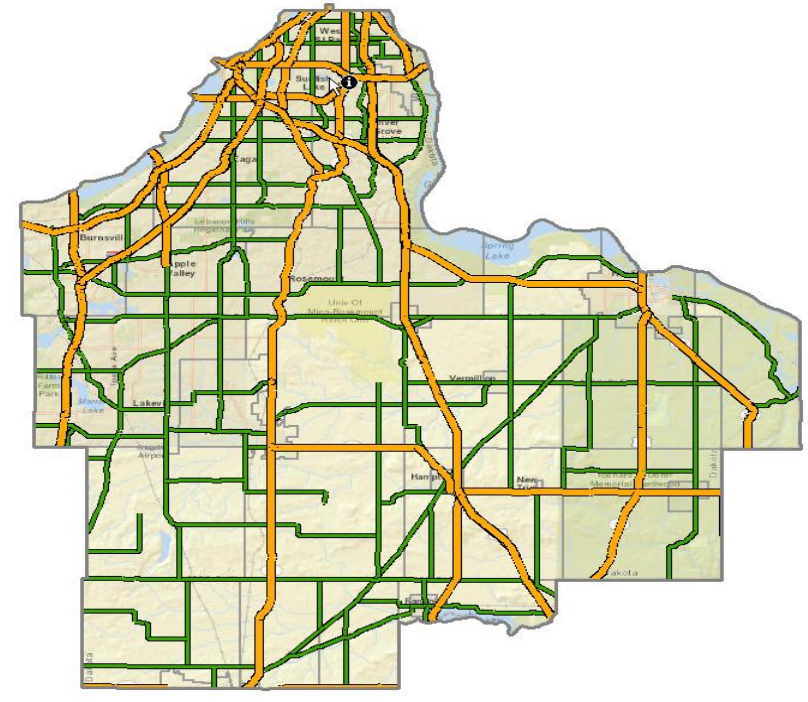
Highway Safety is our Top Priority

- * Transportation Plan Overarching Principal
- * County Highway Safety Plan
- * Toward Zero Death Initiative (4 “E” approach)
 - ▶ Education
 - ▶ Emergency Medical & Trauma Services
 - ▶ Enforcement
 - ▶ Engineering
 - + Everyone
- * County Board Strategic Measure



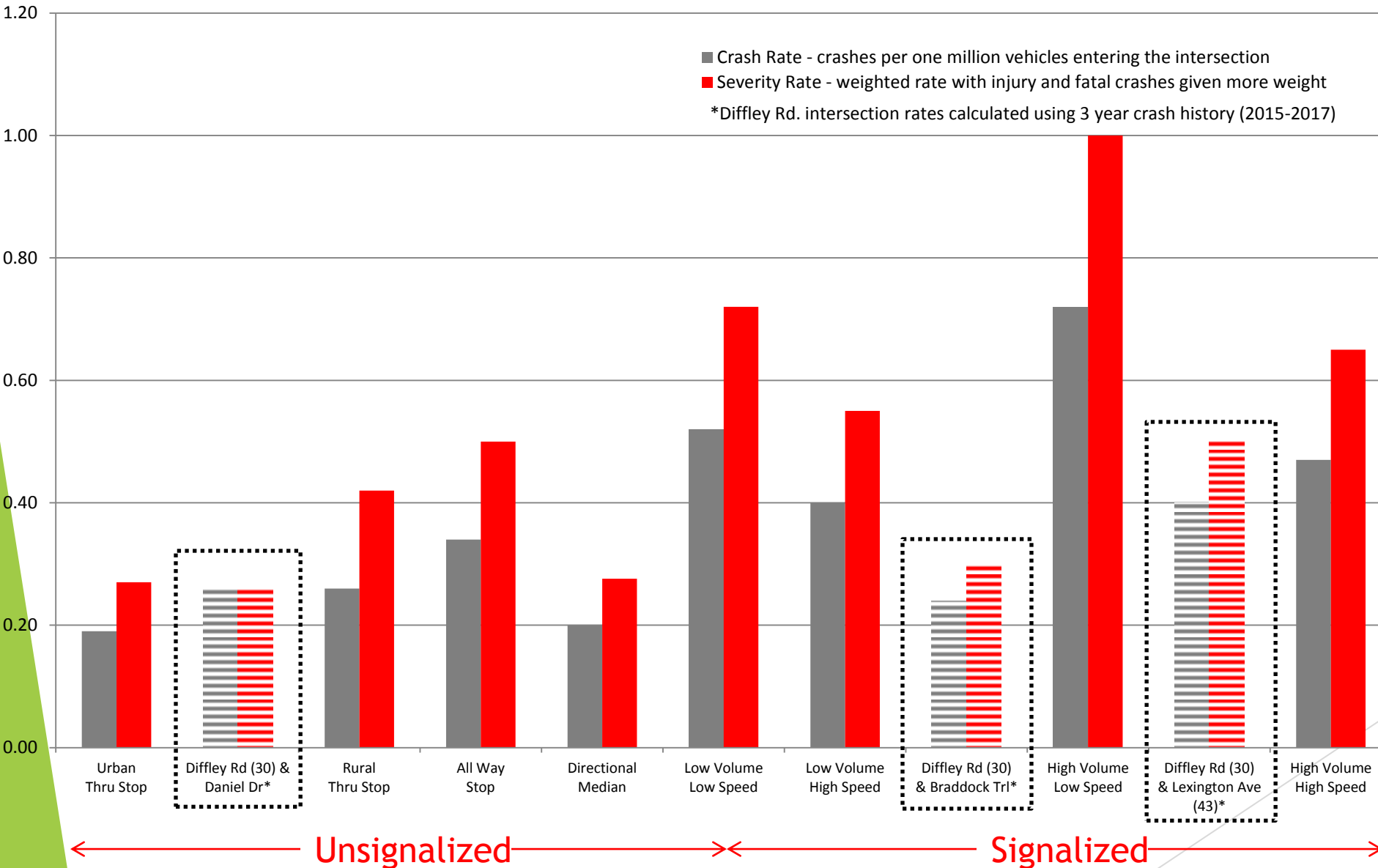
County Highway System

- 424 Miles of Road
 - Rural, Urban, and Suburban
 - Trail Facilities
 - Just under 1500 Intersections
- Intersection Traffic Control
 - Side Street stop - 1300
 - All Way Stop - 36
 - Traffic Signal - 135
 - Roundabout - 7
- 43 Schools adjacent to County Highway in Dakota County.

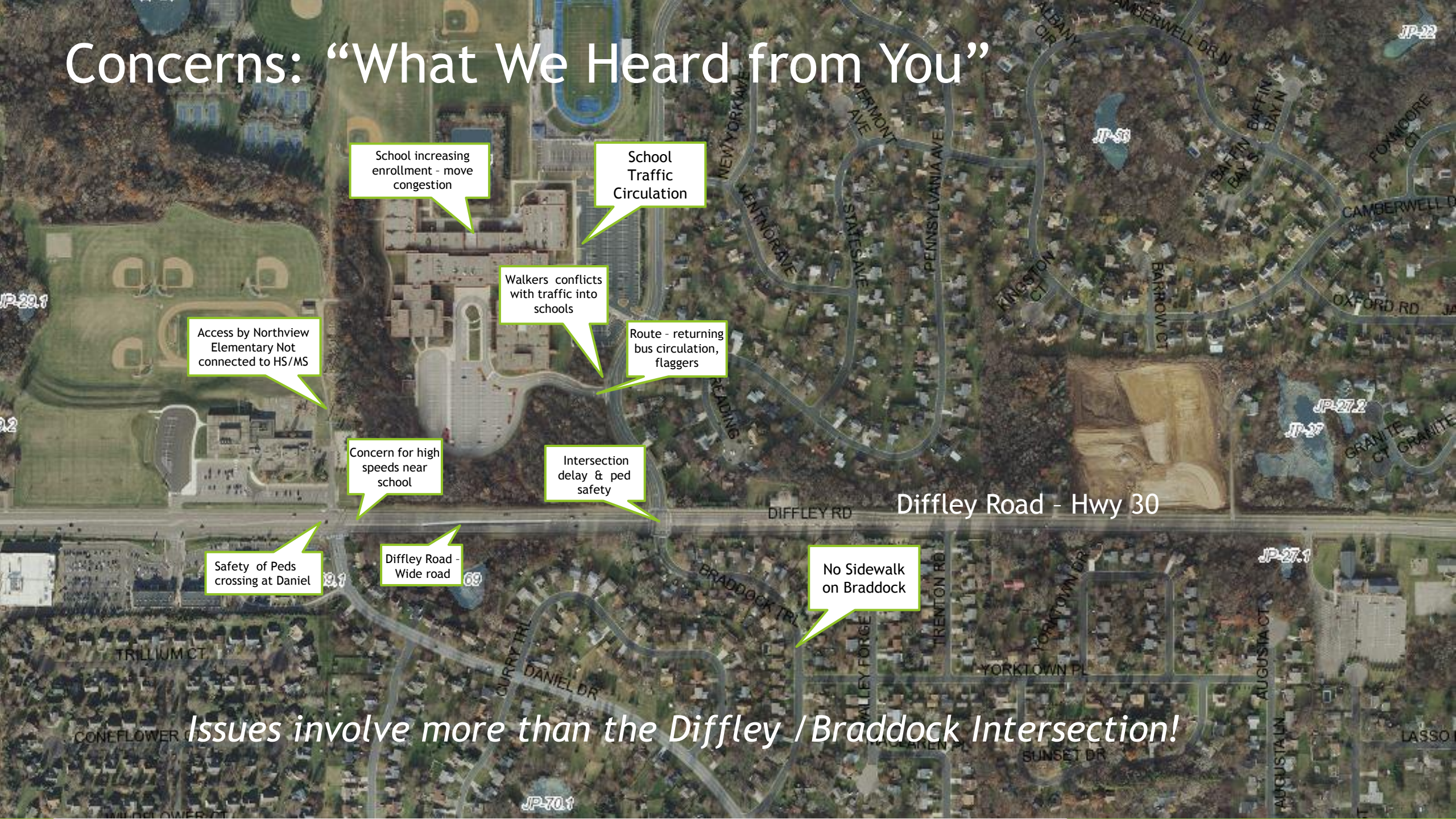


Assessment & Improvements System Wide Consistency

Crash Data By Traffic Control



Concerns: "What We Heard from You"



School increasing enrollment - move congestion

School Traffic Circulation

Walkers conflicts with traffic into schools

Route - returning bus circulation, flaggers

Access by Northview Elementary Not connected to HS/MS

Concern for high speeds near school

Intersection delay & ped safety

Diffley Road - Hwy 30

Safety of Peds crossing at Daniel

Diffley Road - Wide road

No Sidewalk on Braddock

Issues involve more than the Diffley / Braddock Intersection!



Diffley/Braddock Intersection

Concerns:

- Bicycle and pedestrian safety
- New traffic signal operations
- New north leg geometry adding traffic to the neighborhood south of the intersection

City/County Response:

- Incorporate additional sidewalk & larger landing area in southwest corner
- Illustrate the traffic signal timing alternatives



Eagan High School & Dakota Hills Middle School

Concerns:

- Pedestrian & bicycle safety
 - Driveways
 - Within school grounds
 - Entrances
- School traffic exits to Diffley Road & Braddock Trail intersection

Suggestions:

- Connecting Northview Elementary School to Dakota Hills Middle School
- Installing a walking path from Diffley Road to the Dakota Hills Middle School parking lot
- Stationing flaggers/police officers at the school driveways before and after school



Eagan High School & Dakota Hills Middle School

City/County Response:

The City and County are continuing conversations with ISD 196 regarding overall traffic circulation and the issues identified above.



Diffley Road in Adjacent Area

Concerns:

- Pedestrian & bicycle safety
- North/South Connection

Suggestions:

- Install a pedestrian bridge or underpass
- Reduce the speed limit
- Reduce the roadway cross section (3 lane)
- Install a school speed zone
- Install a crosswalk at Daniel Drive

City/County Response:

Continuing to explore options.

Other



Concern:

Can the City install sidewalks or provide a walking area along the roadway in the neighborhood south of Braddock?

City Response:

A petition for a neighborhood financed sidewalk would be welcomed for consideration by the City Council.

City initiated Bike & Ped Master Plan

The request to consider making the first block south of Braddock Trail one-way with a marked pedestrian area along the roadway would place additional traffic on other

Other



Concern:

Can snow removal/ storage be improved in the southwest corner to provide more room for pedestrians in the winter?

City Response:

Public works crews have increased their snow removal efforts there, and will remove snow to the fullest extent possible.

Next Steps

- Continue Discussions with ISD 196 Regarding Circulation and Potential Alternative Access Feasibility
- Conduct School Safety Study - System Wide
- City Bike & Ped Master Plan
- Additional Intersection Assessment

Next Steps

- Future public meetings
 - Area
 - Study and Plan

Q & A / Discussion

