



Dakota
COUNTY



CITY OF
MENDOTA HEIGHTS



CITY OF
WEST ST. PAUL

WELCOME

Delaware Ave Reconstruction &
Butler Ave Trail and Sidewalk Improvements

OPEN HOUSE



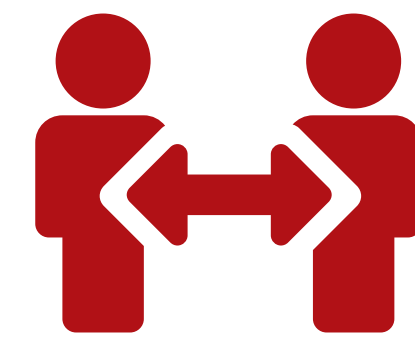
Project Background

Dakota County and the cities of Mendota Heights and West St. Paul are planning to reconstruct Delaware Avenue from Marie Avenue to Dodd Road and make improvements on Butler Avenue from Delaware Avenue to Manomin Avenue. The project will add curb and gutter, multi-use trail, and improve drainage and utilities on Delaware Avenue. The project will also add a multi-use trail and sidewalk on Butler Avenue.



Project Area Map

PROJECT GOALS:



ENGAGE THE PUBLIC

to ensure active participation and understanding for the project



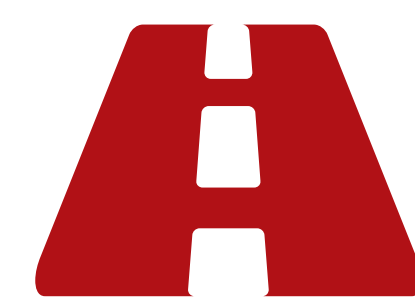
INCORPORATE PUBLIC INPUT

in evaluating and identifying recommended improvements



IMPROVE PEDESTRIAN AND BIKE SAFETY

and access to area schools and parks



URBANIZE THE ROADWAY

by adding curb and gutter, improving roadway maintenance, and improving stormwater management



MITIGATE PROPERTY IMPACTS

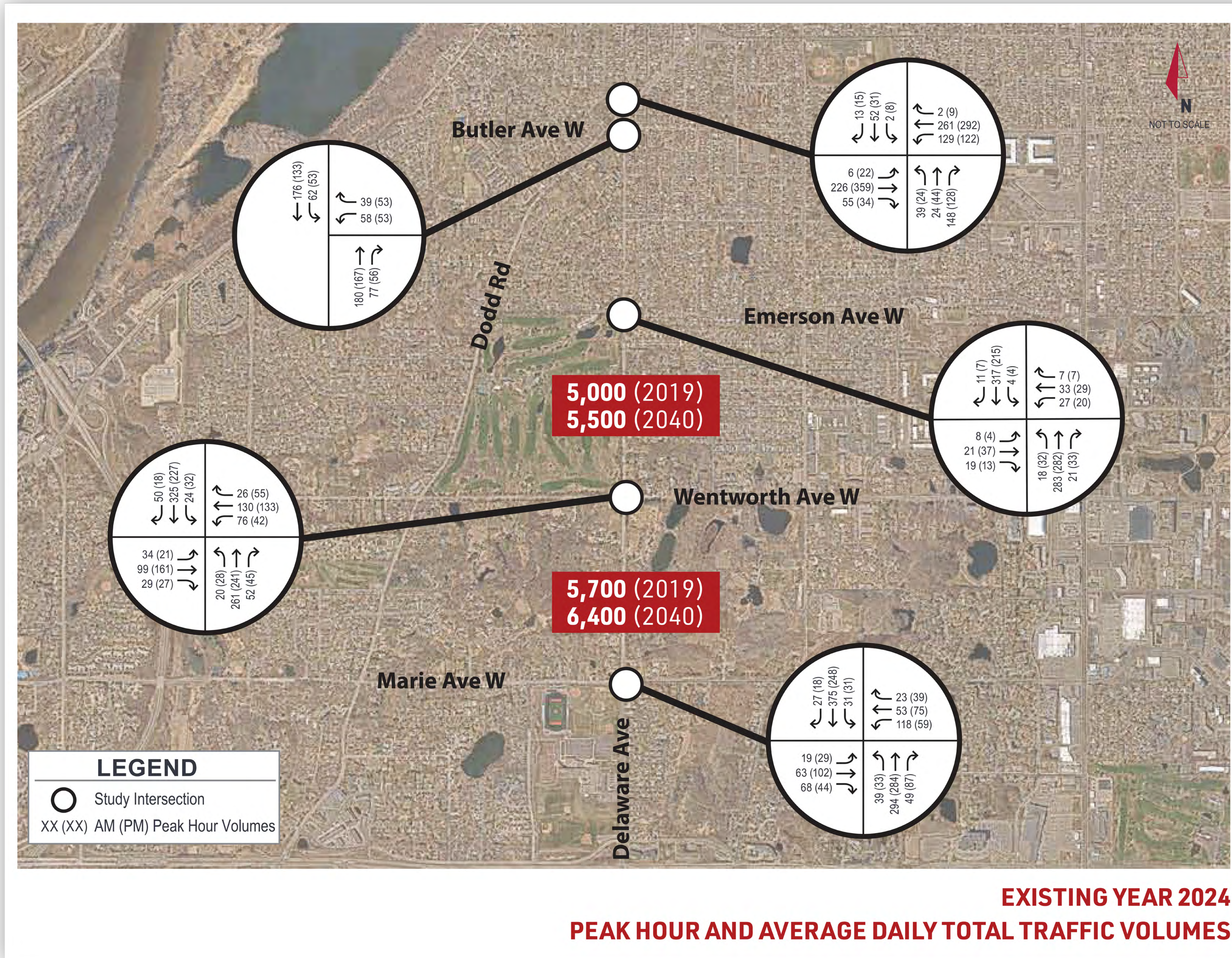
Evaluate design options to minimize property impacts while achieving other project goals



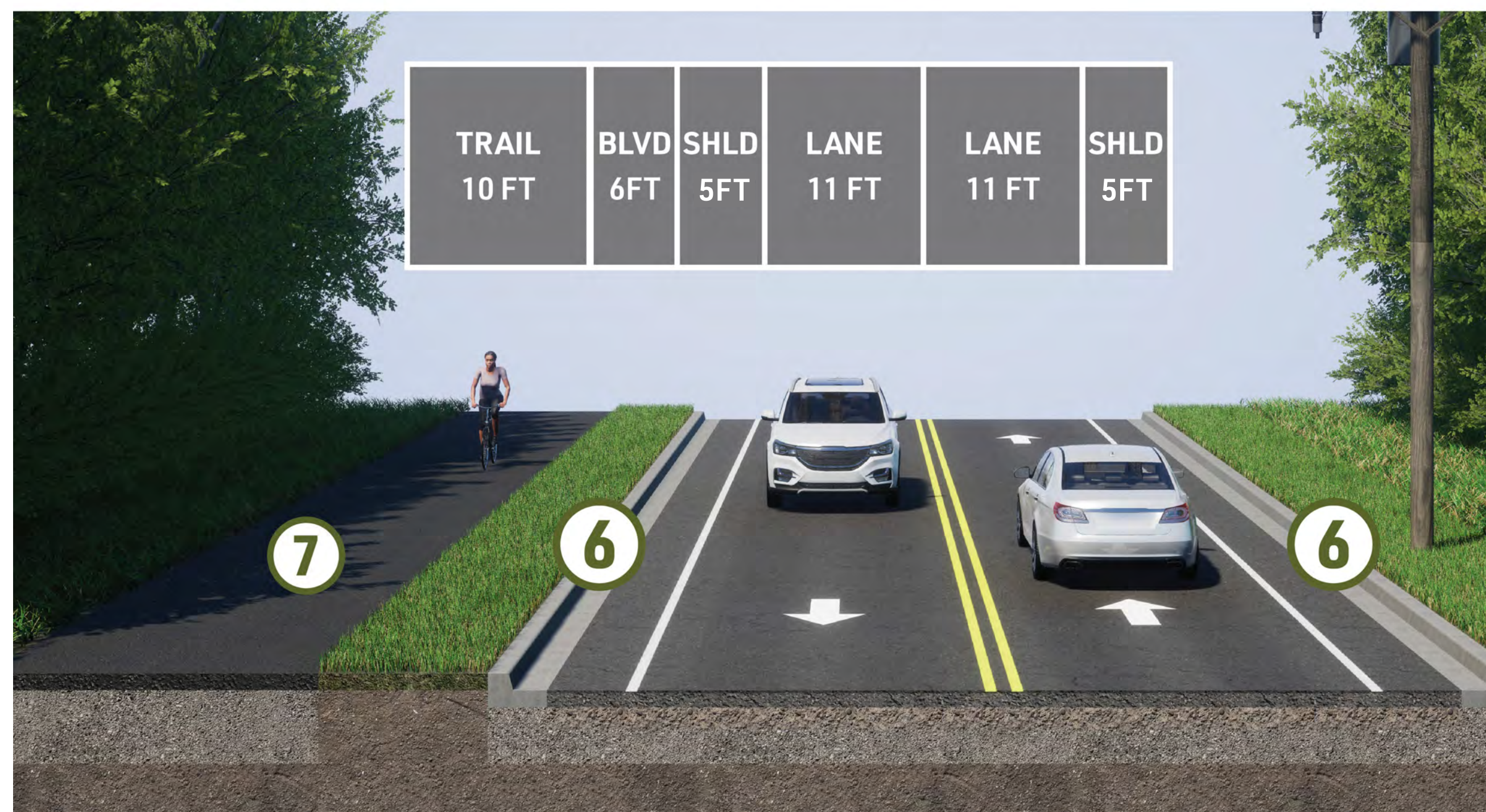
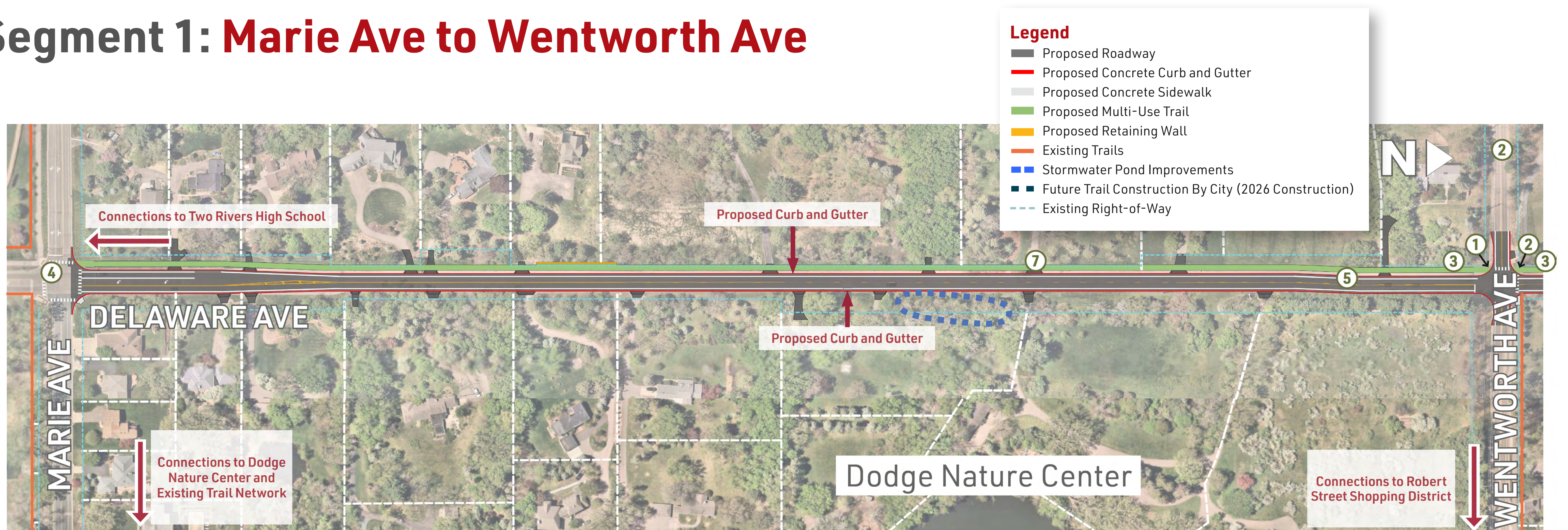
EVALUATE INTERSECTION AND ROADWAY SAFETY

by evaluating turn lane needs, intersection control, and other safety improvements

Existing Traffic Counts and Daily Traffic



Segment 1: Marie Ave to Wentworth Ave



Proposed Delaware Avenue Typical Section (Looking North)
Segment 1: Marie Ave to Wentworth Ave

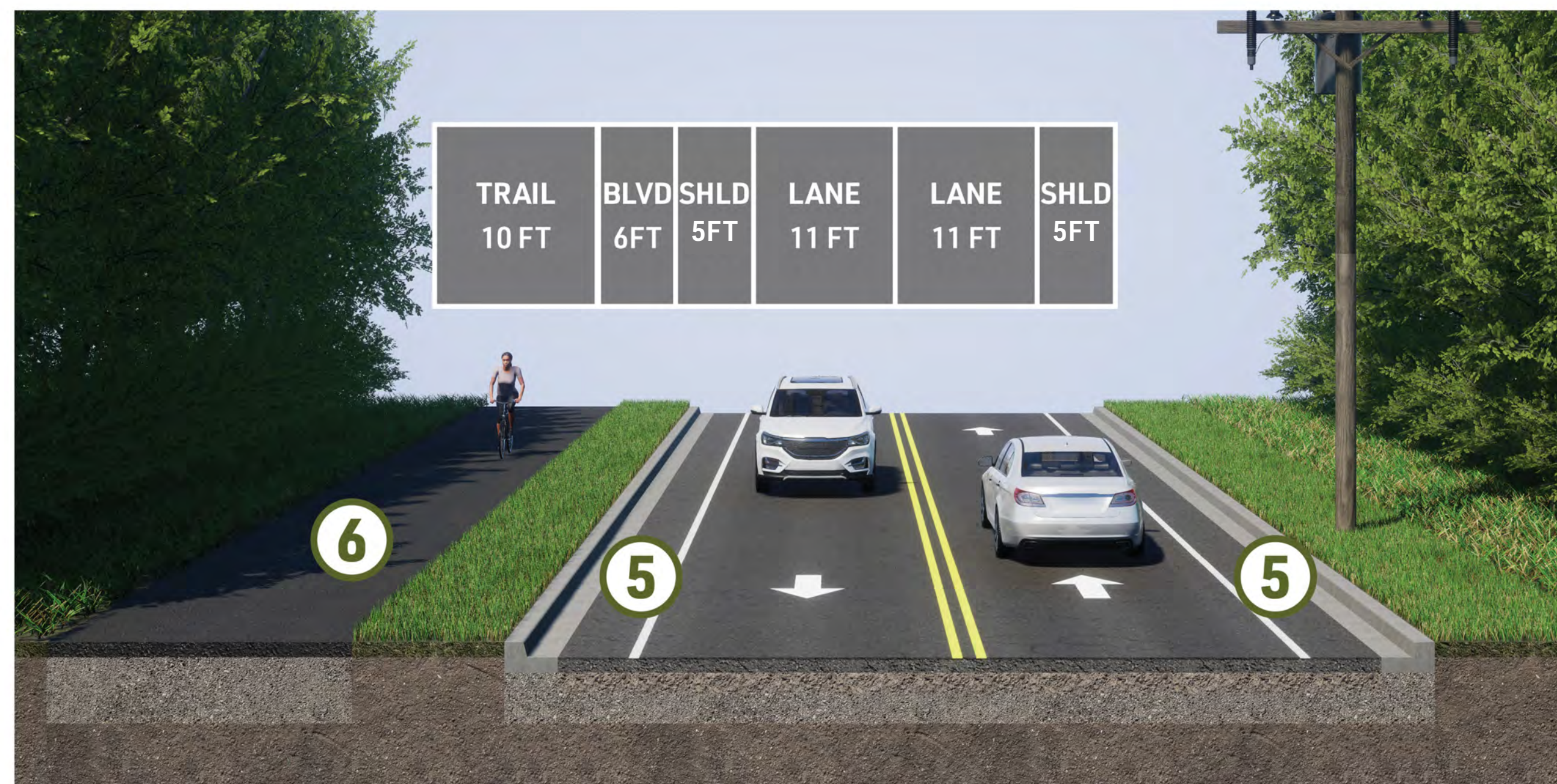
Segment Considerations:

- ① Curb bumpouts to reduce pedestrian crossings and promote slowing of vehicles on Wentworth Avenue
- ② Install additional signage and pavement markings for improved advance stop sign warning
- ③ Improved intersection sight distance
- ④ Maintain existing intersection lane configuration at Marie Avenue
- ⑤ Roadway alignment shift at Wentworth Avenue to reduce impacts to private property
- ⑥ On-street parking not permitted
- ⑦ Proposed multi-use trail on west side of Delaware Avenue only

Segment 2: Wentworth Ave to Emerson Ave

Legend:

- Proposed Roadway
- Proposed Concrete Curb and Gutter
- Proposed Multi-Use Trail
- Proposed Retaining Wall
- Future Trail Construction By City (2026 Construction)
- Proposed Concrete Sidewalk
- Stormwater Pond Improvements
- Existing Right-of-Way



Segment Considerations:

- ① Relocate city lift station generator and clear vegetation for improved intersection sight distance
- ② Rectangular Rapid Flashing Beacon (RRFB) Pedestrian Crossing Improvement
- ③ Accessible crossing location
- ④ Roadway alignment shift at Wentworth Avenue to reduce impacts to private property
- ⑤ On-street parking not permitted
- ⑥ Proposed multi-use trail on west side of Delaware Avenue only

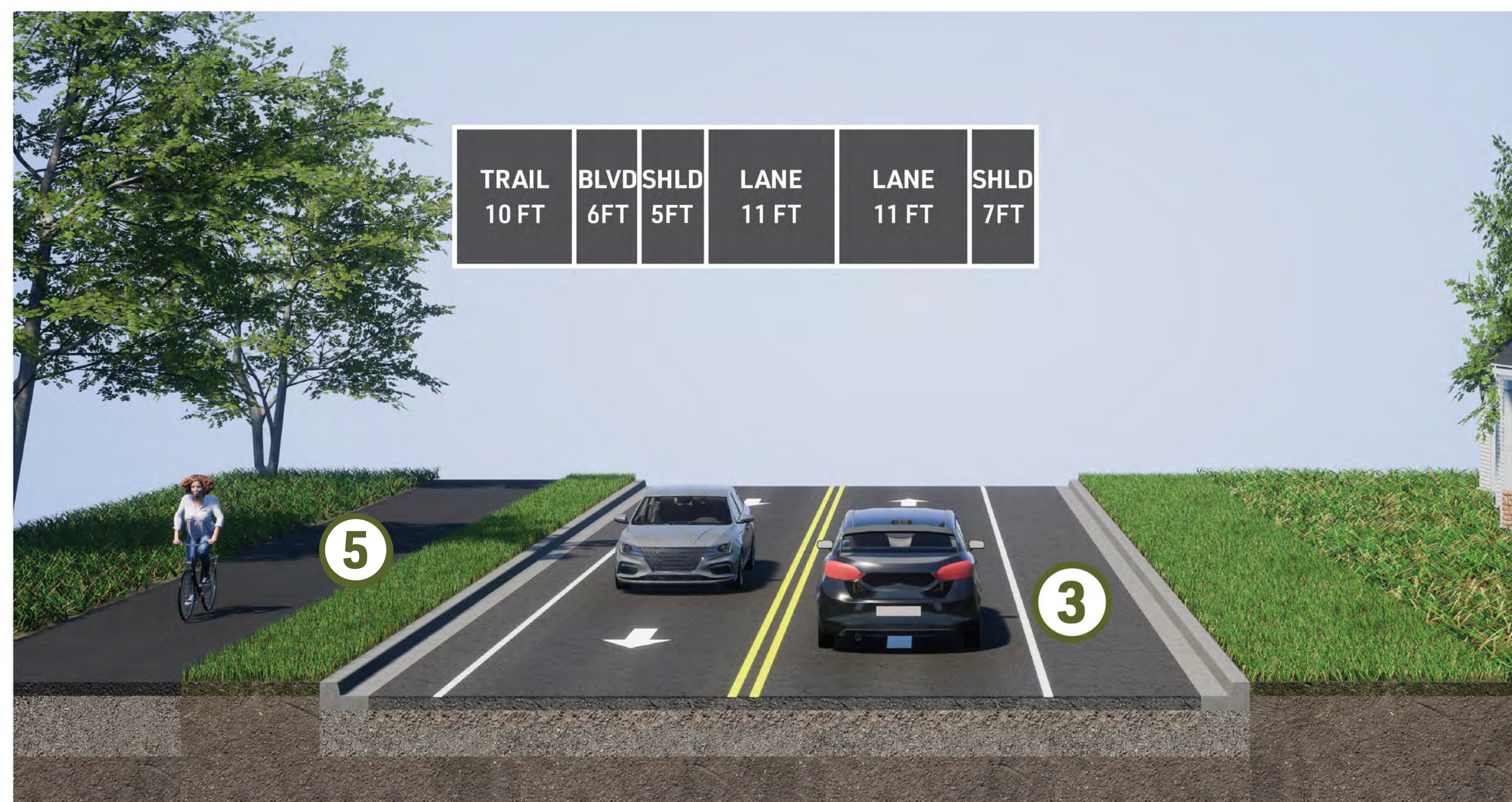
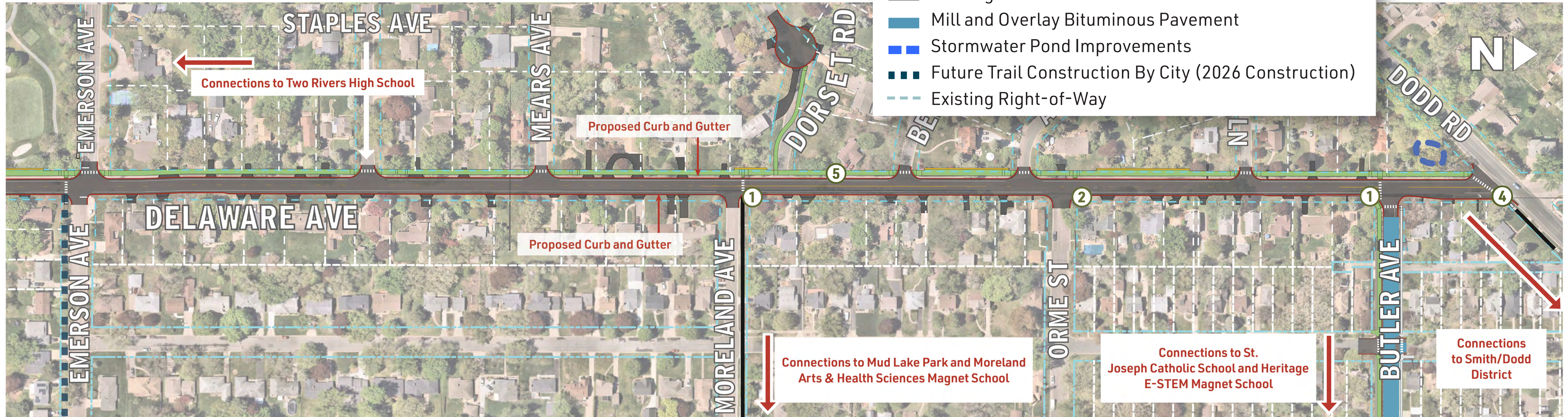
Proposed Delaware Avenue Typical Section (Looking North)

Segment 2: Wentworth Ave to Emerson Ave

Segment 3: Emerson Ave to Dodd Road

Legend

- Proposed Roadway
- Proposed Concrete Curb and Gutter
- Proposed Concrete Sidewalk
- Proposed Multi-Use Trail
- Proposed Retaining Wall
- Existing Sidewalks
- Mill and Overlay Bituminous Pavement
- Stormwater Pond Improvements
- Future Trail Construction By City (2026 Construction)
- Existing Right-of-Way

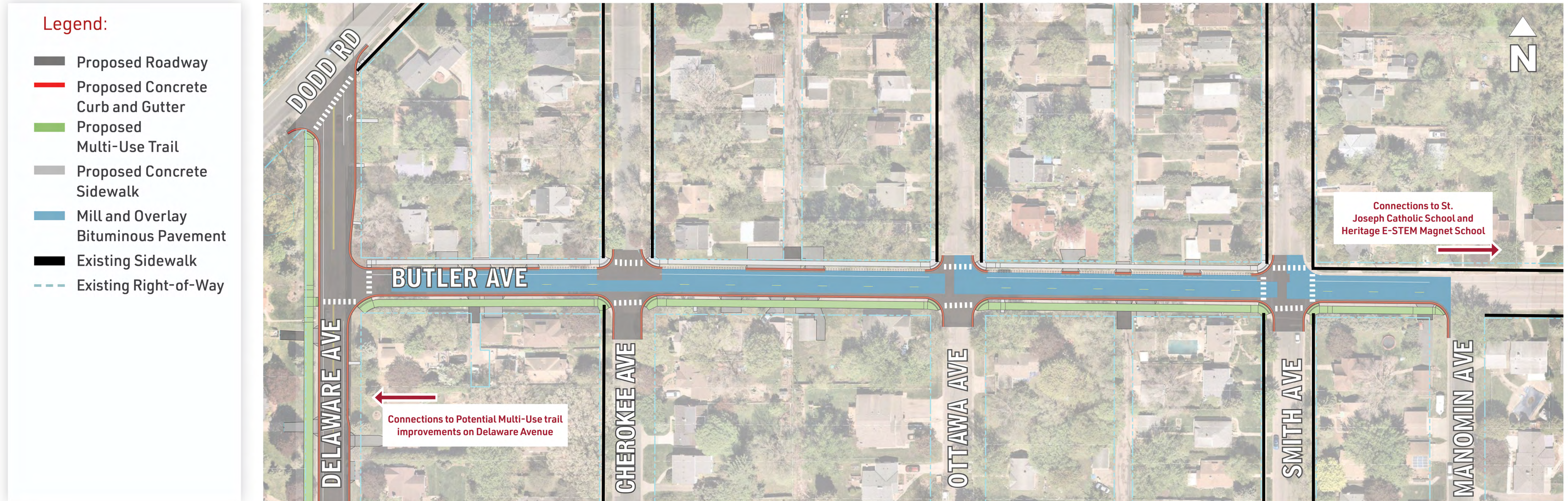


Segment Considerations:

- ① Dedicated accessible pedestrian crossing with advance warning signage and markings
- ② Accessible crossing location
- ③ On-street parking allowed for majority of segment on east side of Delaware Avenue only
- ④ Addition of a new, northbound right turn lane
- ⑤ Proposed multi-use trail on west side of Delaware Avenue only

Proposed Delaware Avenue Typical Section (Looking North)
Segment 3: Emerson Ave to Dodd Road

Butler Avenue Segment



Proposed Butler Avenue Typical Section (Looking East)

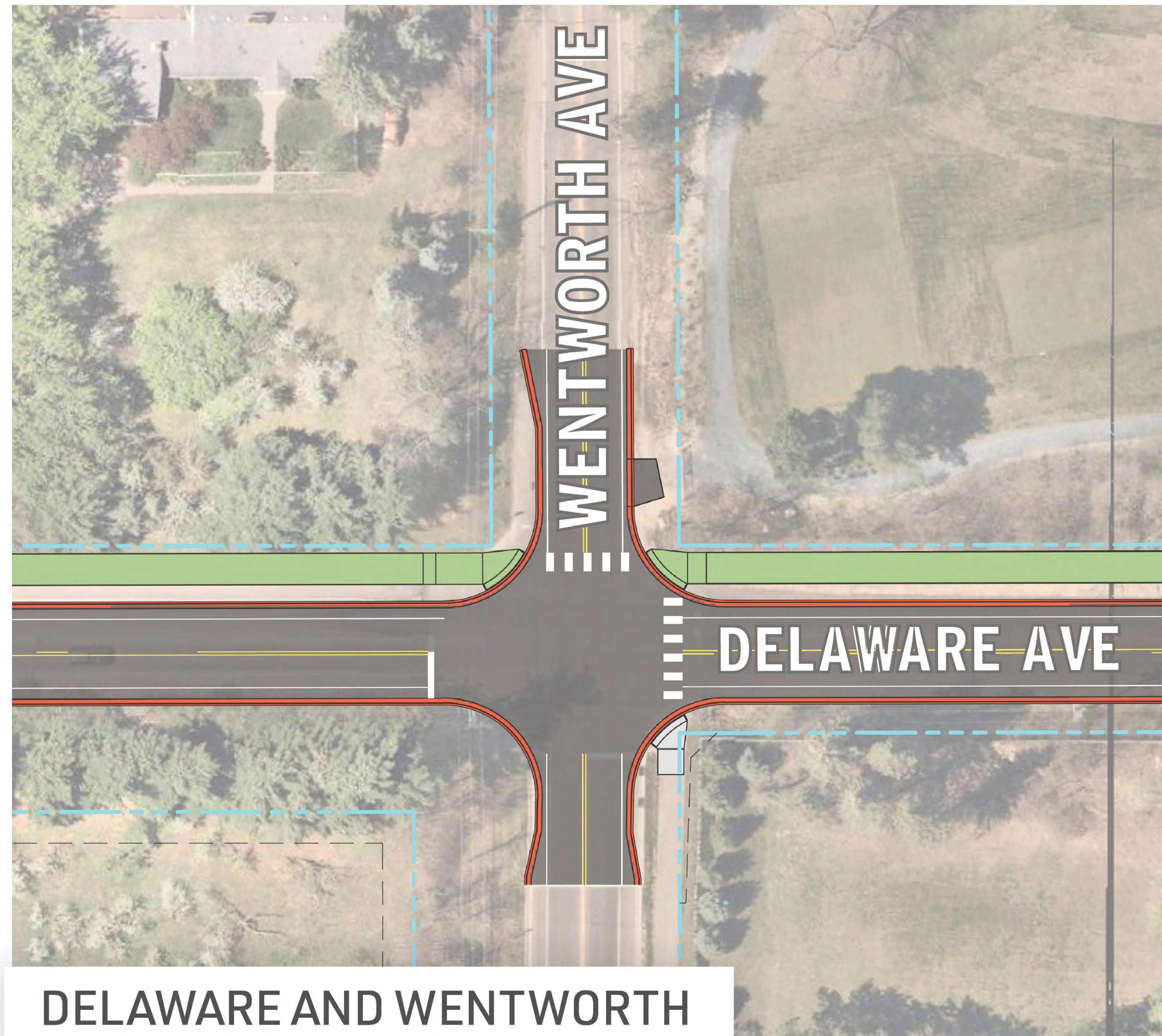
Project Background:

Dakota County's 2040 Transportation Plan identifies a high priority pedestrian and bicycle gap along Butler Avenue. This project aims to fill this gap by providing continuous trail and sidewalk connections, including links to new crossing improvements at Seminole Avenue and nearby schools as recommended in the 2021 School Travel Safety Assessment. Improvements may require roadway section changes but will minimize impacts to adjacent property owners.

Intersection Considerations on Delaware Ave - Wentworth Ave and Butler Ave/Dodd Road

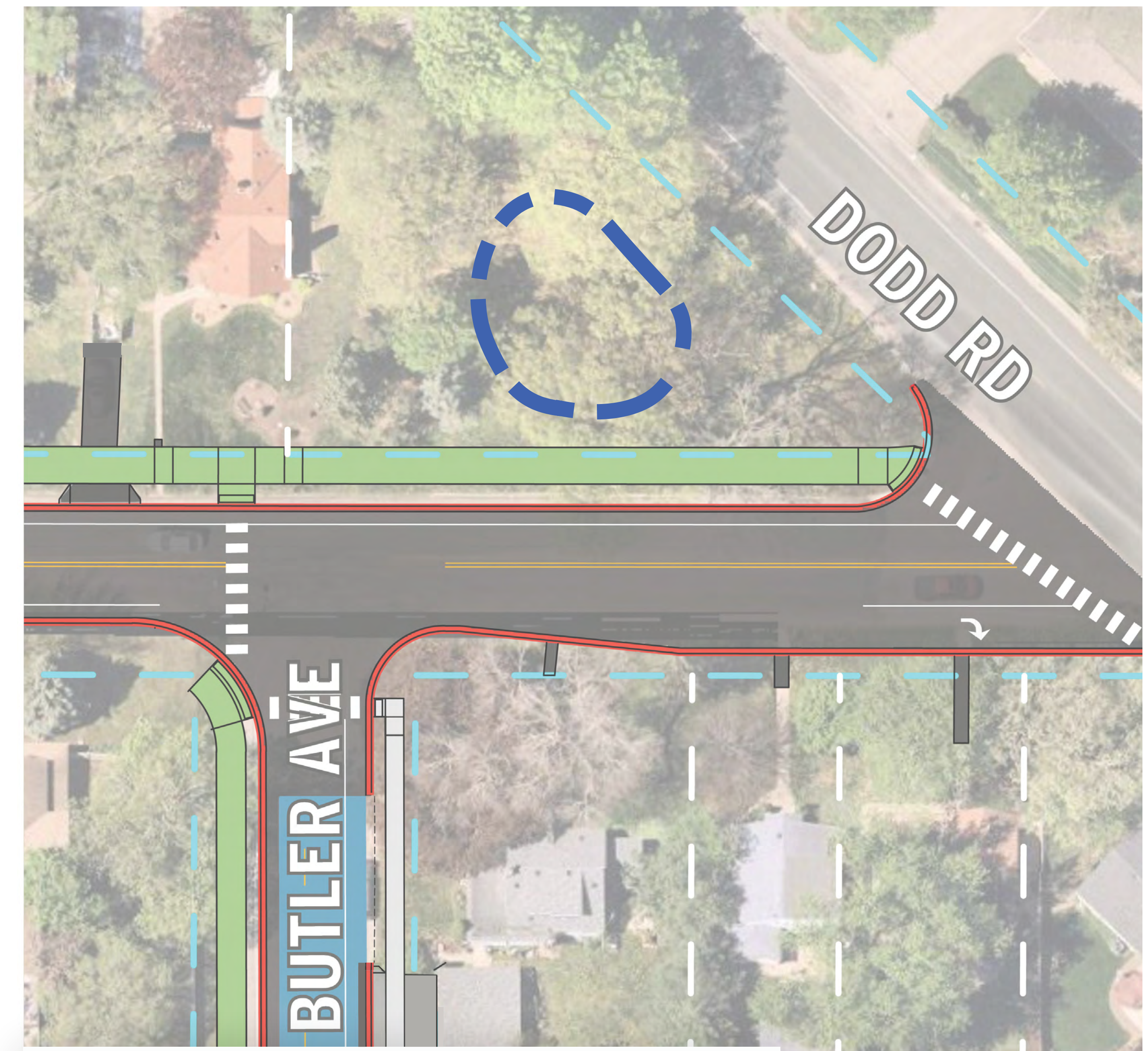
Legend:

- Proposed Roadway
- Proposed Concrete Curb and Gutter
- Proposed Concrete Sidewalk
- Proposed Multi-use trail
- Stormwater Pond Improvements
- Existing Right-of-Way



A roundabout was considered at this intersection and is not recommended due to the following:

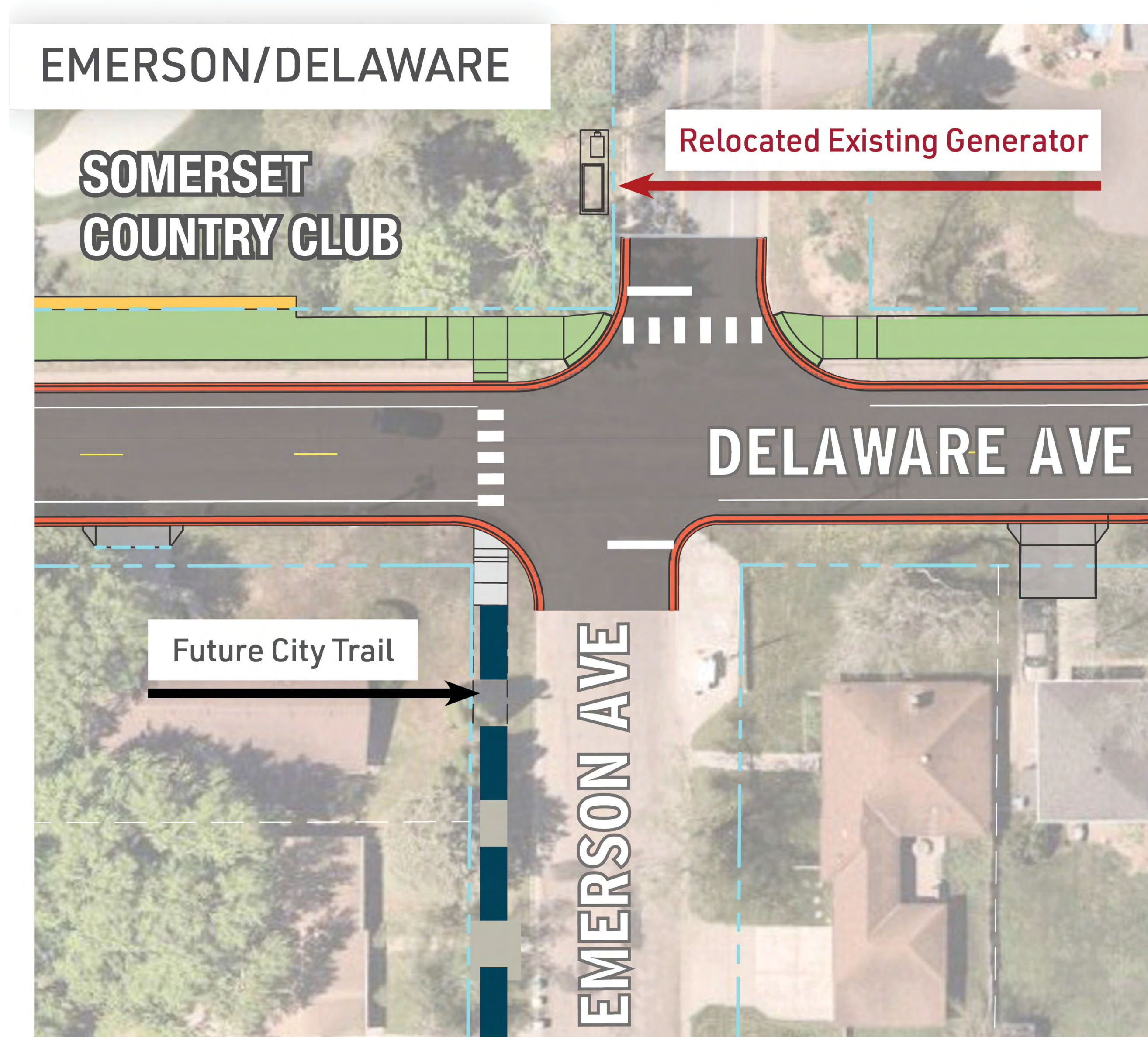
- Significant increase in private property impacts vs. an all-way stop intersection
- Higher construction cost
- All-way stop intersection provides acceptable traffic operations
- No history of serious or fatal crashes at intersection
- Additional signage, markings, and geometric improvements are proposed to improve visibility and stop sign compliance at intersection



The project will add:

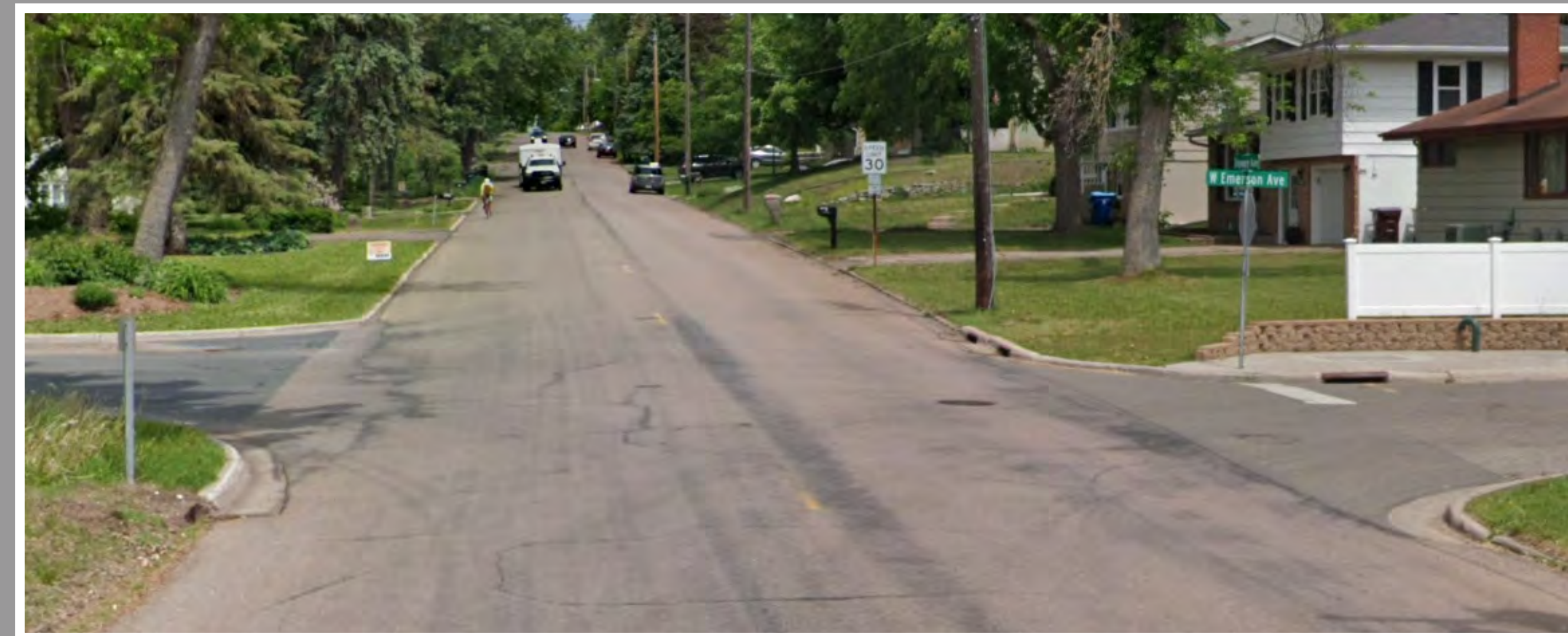
- A northbound right turn lane at Dodd Road
- A marked and signed crosswalk at the intersection of Delaware Avenue with Butler Avenue and Dodd Road

Intersection Considerations on Delaware Ave – Emerson Ave



Intersection skew and sight distance were evaluated and the following is recommended:

- Intersection sight distance deficiency contributes to majority of crashes
- No realignment of Emerson Avenue is proposed
- Relocate existing generator and clear trees to improve intersection sight distance conditions
- Install Rectangular Rapid Flashing Beacon at pedestrian crossing location
- Stop signs on Delaware Avenue are not proposed



Current conditions at Delaware Ave and Emerson Ave

Example of a marked crosswalk with Rectangular Rapid Flashing Beacon

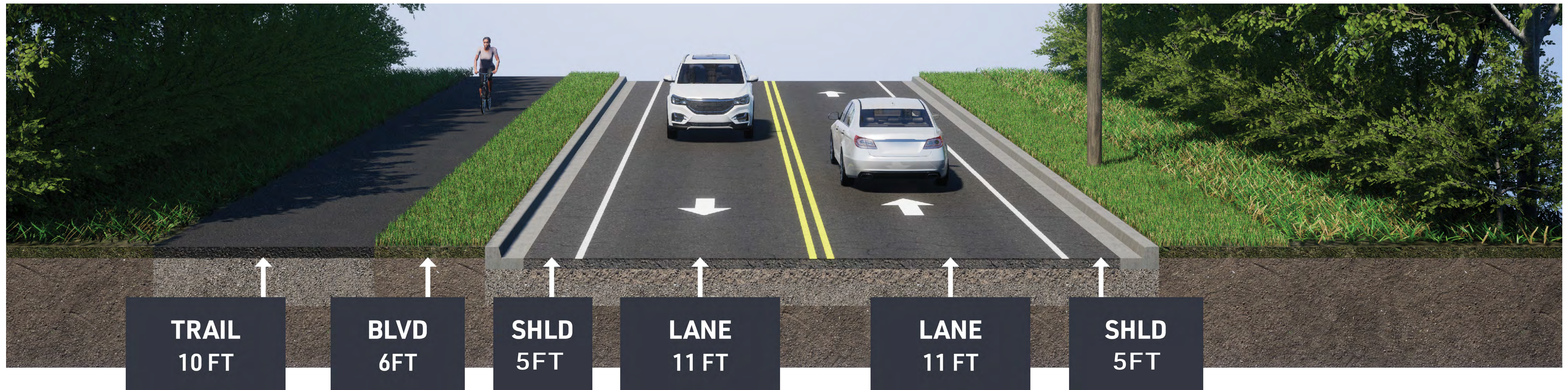


Legend:

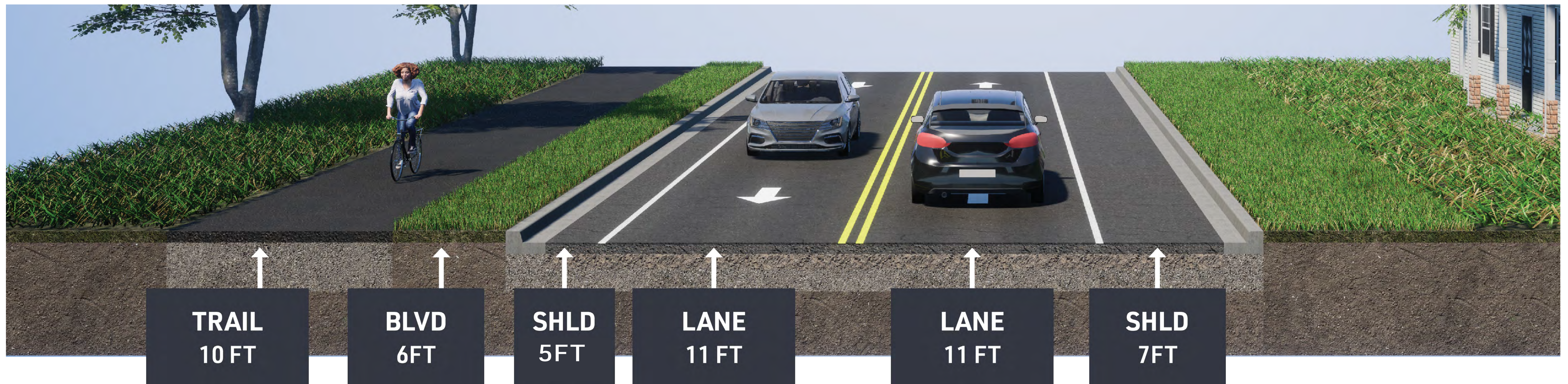
- | | |
|-----------------------------------|---------------------------------------|
| Proposed Roadway | Proposed Multi-Use Trail |
| Proposed Concrete Curb and Gutter | Future City Trail (2026 Construction) |
| Proposed Concrete Sidewalk | Existing Right-of-Way |
| Potential Retaining Wall | |

Delaware Avenue Roadway Typical Section

Proposed Roadway Typical Section (Segment 1: Marie Avenue to Wentworth Avenue and Segment 2: Wentworth Avenue to Emerson Avenue)

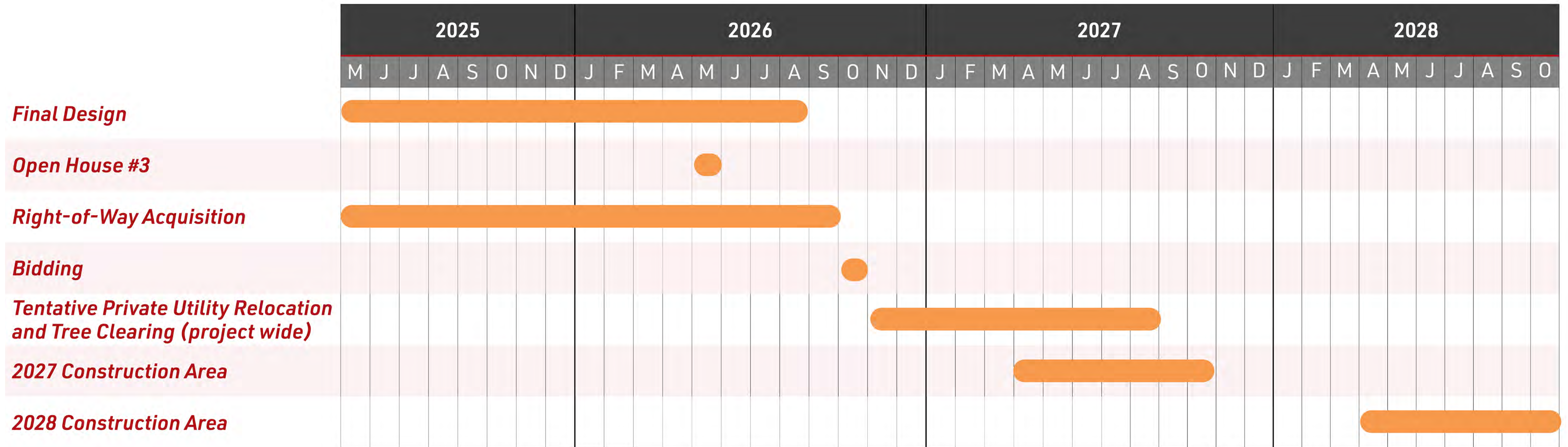


Proposed Roadway Typical Section (Segment 3: Emerson Avenue to Dodd Road)





Next Steps



Stay Connected!

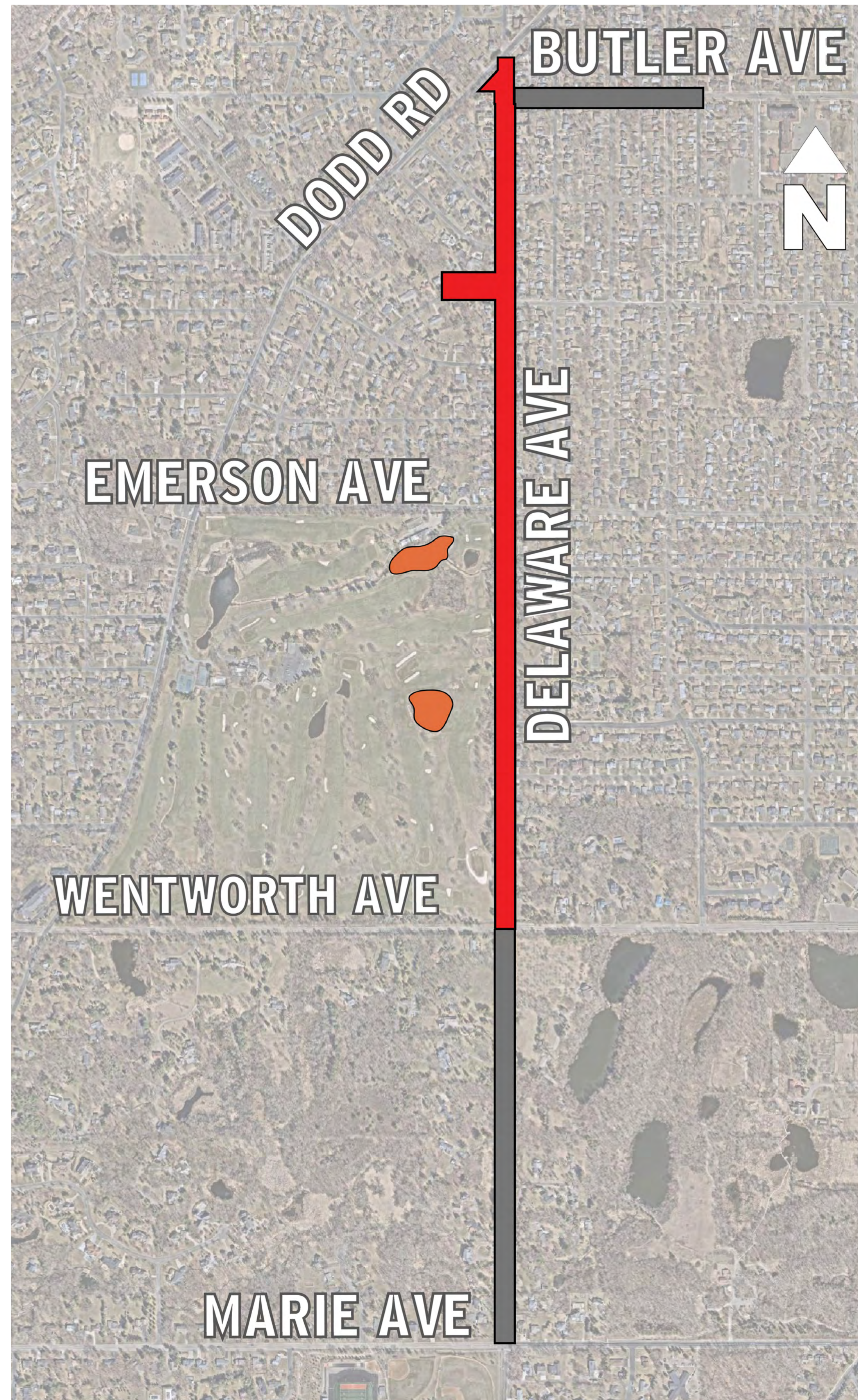
Use this QR code to check out our project website, take the project survey, and comment on the project map



Dakota County

www.co.dakota.mn.us

Anticipated Construction Phasing



Legend

- Phase 1 (Winter 2026/2027)
- Phase 2 (2027)
- Phase 3 (2028)

Phase 1 (*Winter 2026/2027*)

- Stormwater management improvements at Somerset County Club
- Tree clearing throughout entire project area
- Relocation of private utilities throughout entire project area

Phase 2 (*April 2027 – October 2027*)

- Major construction activities along Delaware Avenue between Wentworth Avenue and Dodd Road
- Relocation of private utilities throughout entire project area

Phase 3 (*April 2028 – October 2028*)

- Major construction activities along Delaware Avenue between Marie Avenue to Wentworth Avenue
- Major construction activities along Butler Avenue between Delaware Avenue and Manomin Avenue

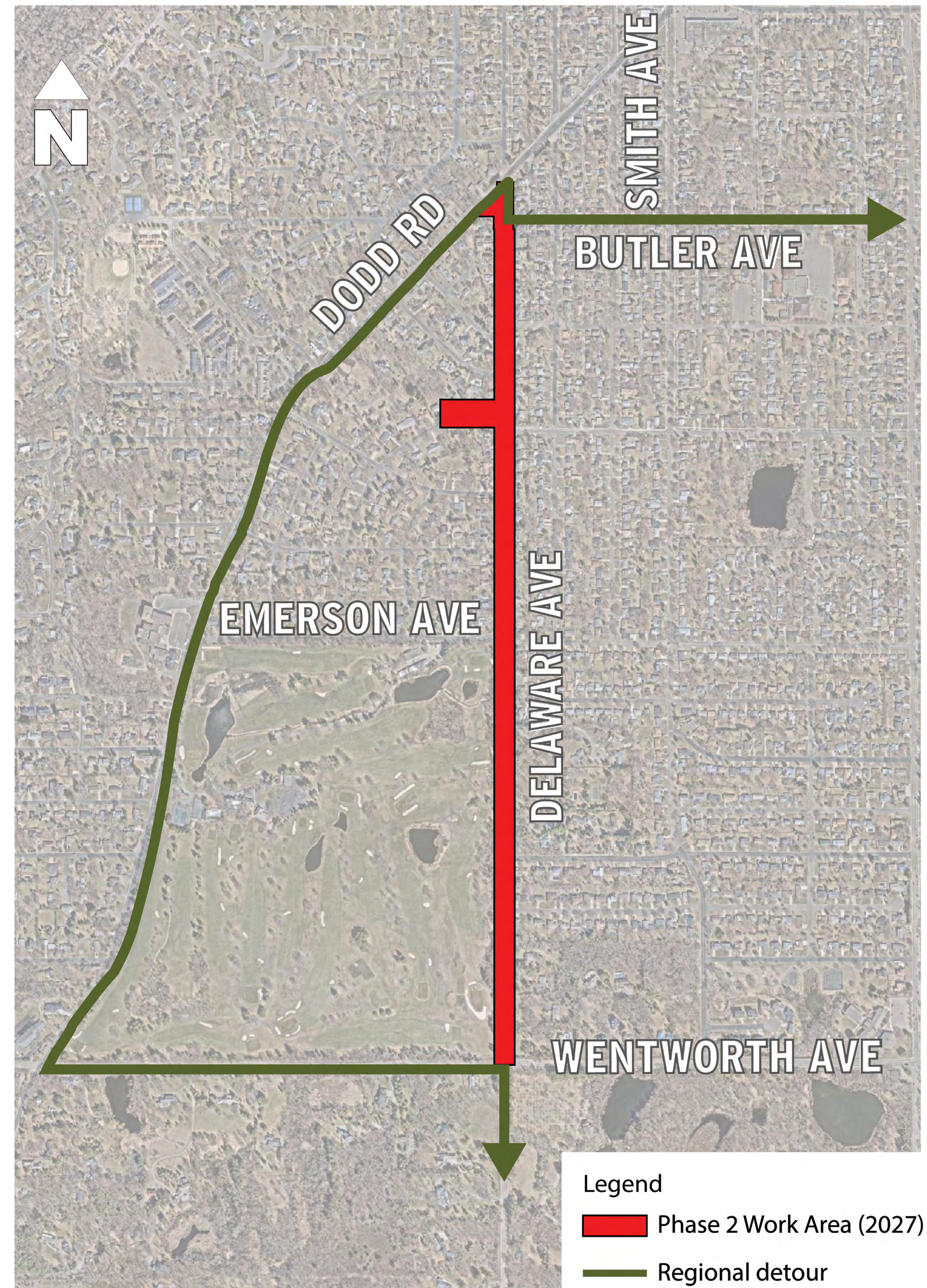


2027 Anticipated Construction Detour

- Delaware Avenue closed to thru traffic between Wentworth Avenue and Dodd Road
- Local driveway access will be maintained from one direction at all times

Additional information about construction can be found on the project handout

Construction updates will be posted to the County's project website weekly



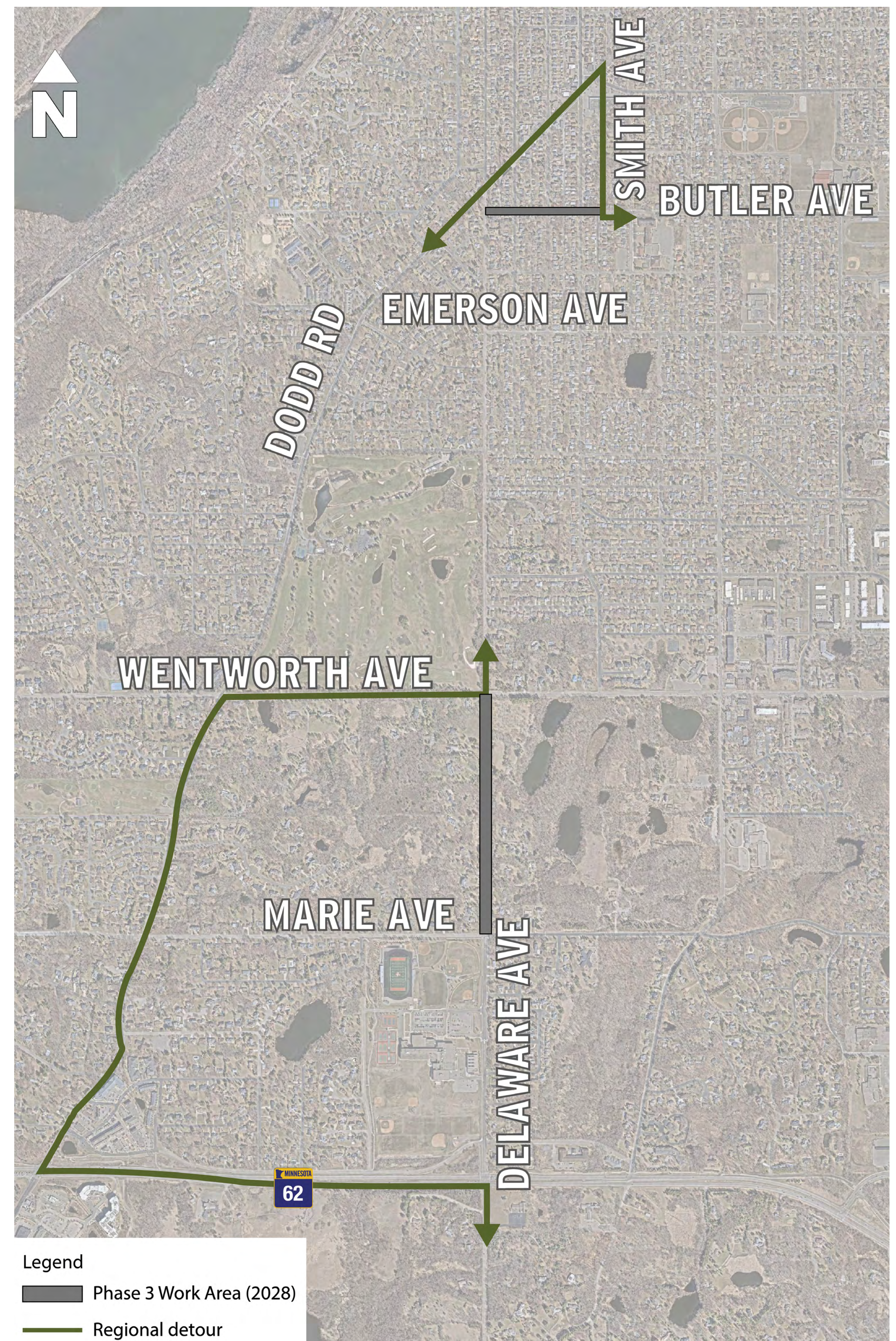


2028 Anticipated Construction Detour

- Delaware Avenue closed to thru traffic between Marie Avenue and Wentworth Avenue
- Local access will be maintained from one direction at all times

Additional information about construction can be found on the project handout

Construction updates will be posted to the County's project website weekly



2028 Butler Avenue Construction



- Butler Avenue constructed in phases with closures occurring in one direction at a time
- Butler Avenue Phase 1- Construct North Half of Project- Westbound traffic closed
- Butler Avenue Phase 2- Construct South Half of Project- Eastbound traffic closed
- Local driveway access maintained during construction

