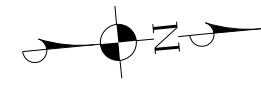


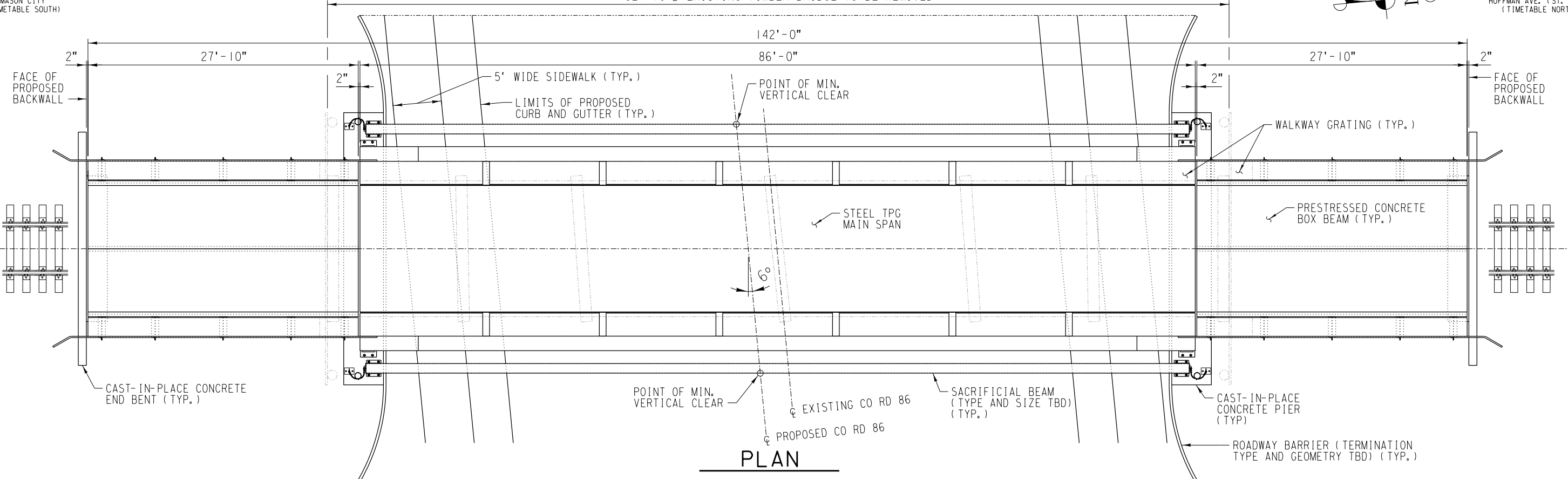
TO NORTHFIELD 8
MASON CITY
(TIMETABLE SOUTH)

TO FARMINGTON 8
HOFFMAN AVE. (ST. PAUL)
(TIMETABLE NORTH)

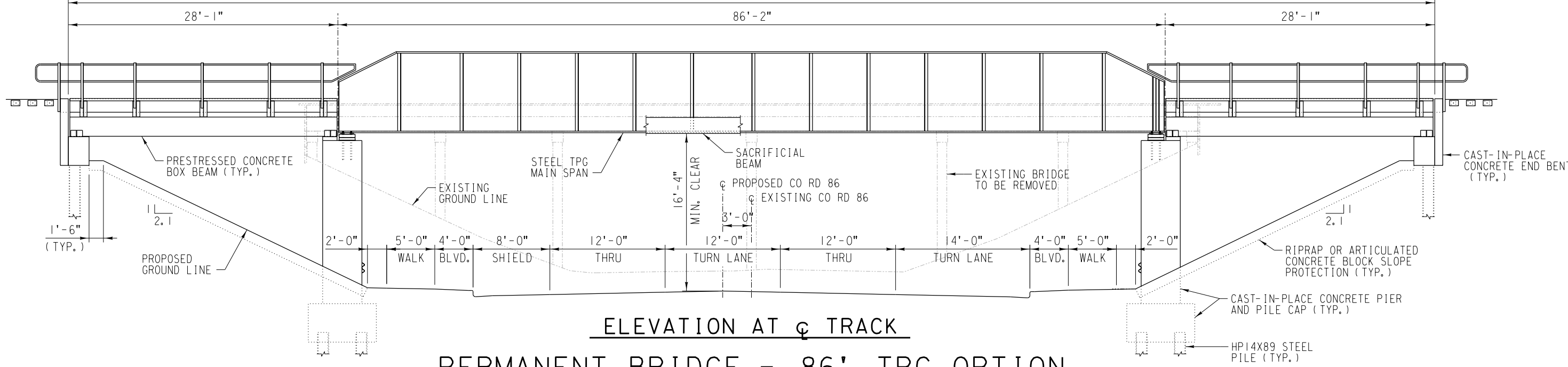
92'-10"± EXISTING TIMBER BRIDGE TO BE REMOVED



☉ TRACK AND BRIDGE
ALIGNMENT: TANGENT



142'-4" (FACE TO FACE OF BACKWALLS)



PERMANENT BRIDGE - 86' TPG OPTION

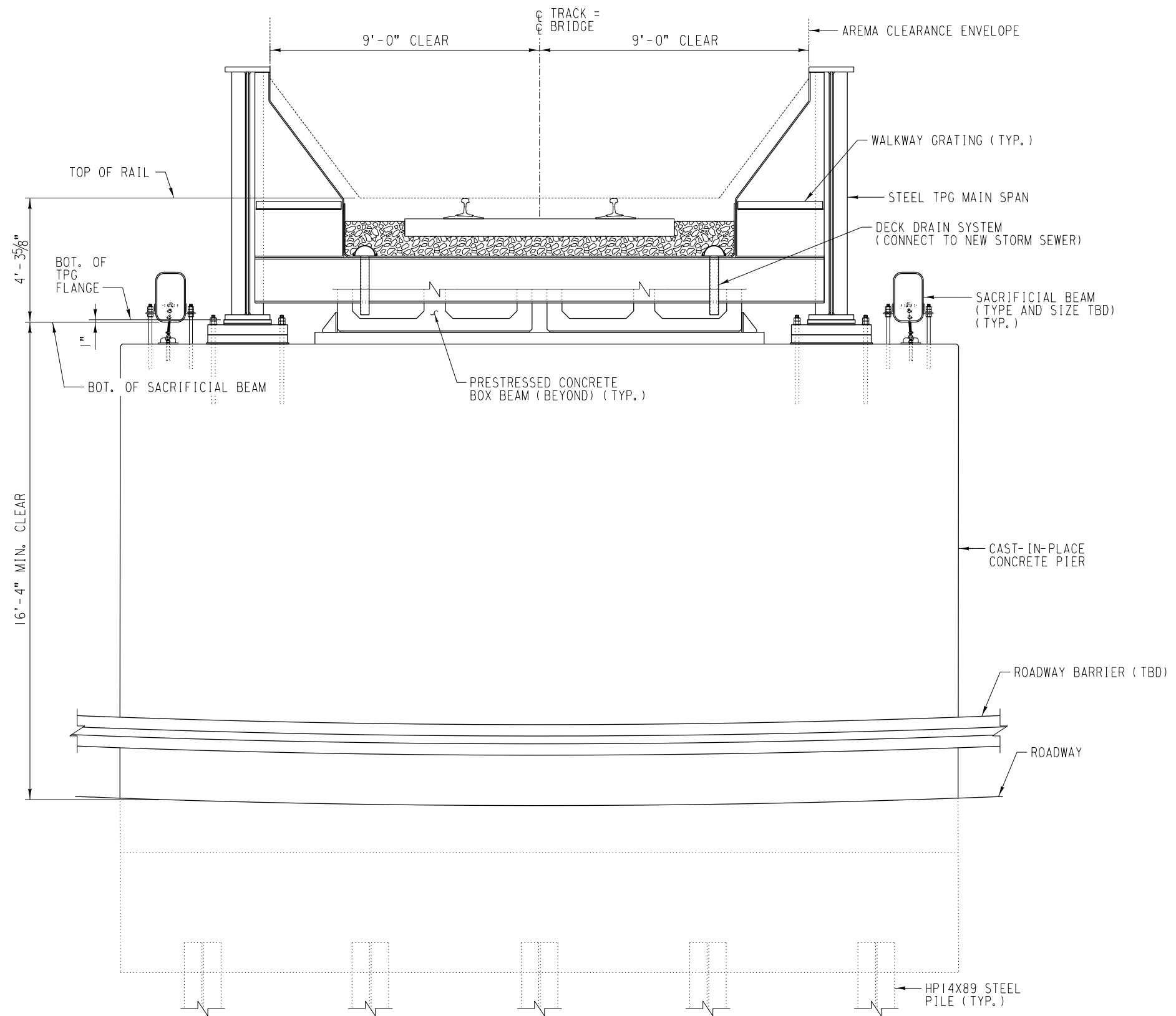
SCALE:

3/32" = 1'-0"



ALBERT LEA SUBDIVISION
BRIDGE 319.57 CONCEPTS
SHEET 1 OF 2

DATE: OCTOBER 8, 2018



TYPICAL SECTION - 86' TPG OPTION

SCALE:

1/4" = 1'-0"



ALBERT LEA SUBDIVISION
BRIDGE 319.57 CONCEPTS
SHEET 2 OF 2

DATE: OCTOBER 8, 2018