

# Lebanon Hills Greenway Regional Trail Corridor

## Proposed reconstructed Greenway Trail along Dodd Road



## Proposed new trail within park



Greenway trail will be on **east side of Dodd Road** from the Lebanon Hills Park Visitor Center to Wescott Road

- Trail Corridor
- - - Other Trails
- ★ Lebanon Hills Visitor Center
- P Parking
- - - - Existing Trail within Lebanon Hills
- + + + + Railroad
- Lebanon Hills Visitor Center Connection Alternatives
  - - - Alternative 1
  - - - Alternative 2
  - - - Alternative 3

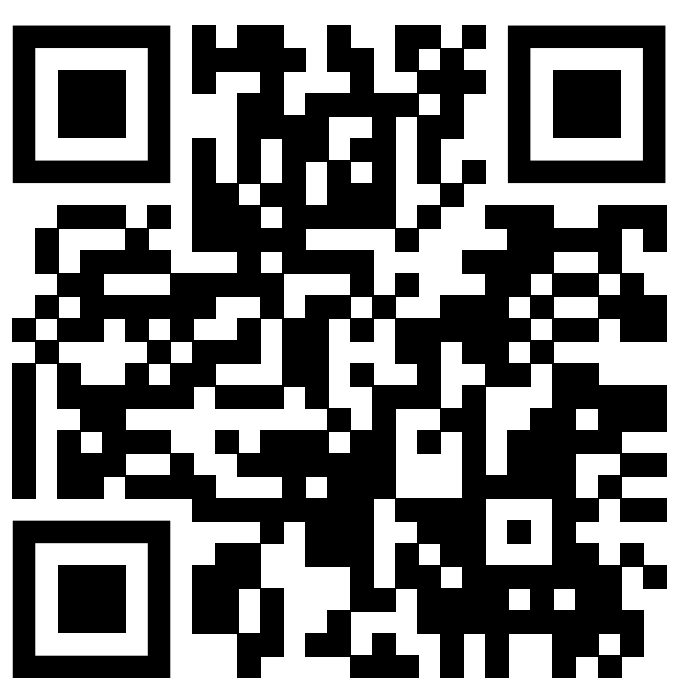


July 2025

Through Summer 2026

Fall 2026 or Spring 2027

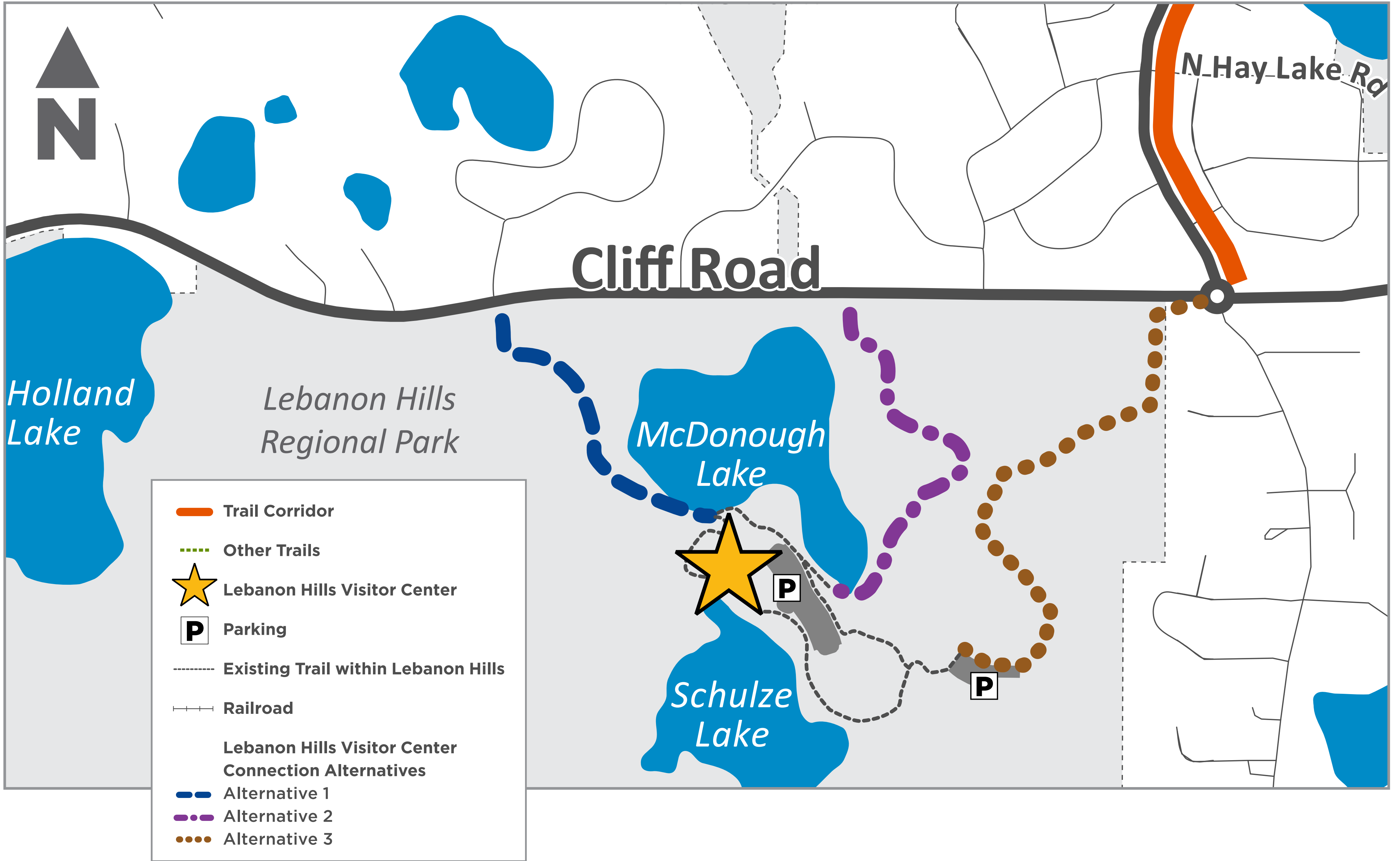
## Project Timeline



## Learn More Online

Visit the project webpage for more information and to provide input at:  
[www.dakotacounty.us](http://www.dakotacounty.us), search for Lebanon Hills Greenway

# Trail Connection to Lebanon Hills Visitor Center



## Alternative 1

**Shortest distance** from Cliff Road to Visitor Center

**This alternative uses the previous park entrance**, which should reduce impacts of its construction

**Most direct route** with fewer curves

May require permits due to **potential wetland impacts**

**Could disrupt existing cross-country ski** trail loop

**Fastest construction** timeline due to shorter length

**May impact natural resource** restoration locations

## Alternative 2

**Steepest terrain** with challenging slopes

**May not meet ADA accessibility** requirements for trail grades

**Extensive tree removal** may be needed through dense forest areas

**Higher construction costs** due to steep grade management

**Most challenging route** for visitors with mobility limitations

Utilizes existing **mid-block crossing** off of Cliff Road

**Does not impact natural resource** restoration locations

## Alternative 3

**Longest distance** from Cliff Road to Visitor Center

**Extensive tree removal** may be needed through dense forest areas

May require permits due to **potential wetland impacts**

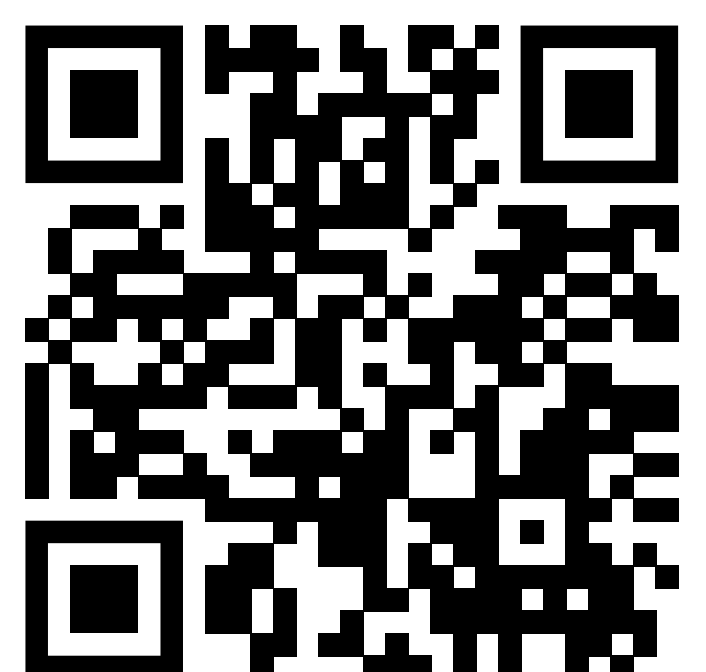
Possible need to **acquire additional right-of-way** from adjacent property

**Trail connection for park staff** between Visitor Center, Beach House and Maintenance Shop

**Does not impact natural resource** restoration locations

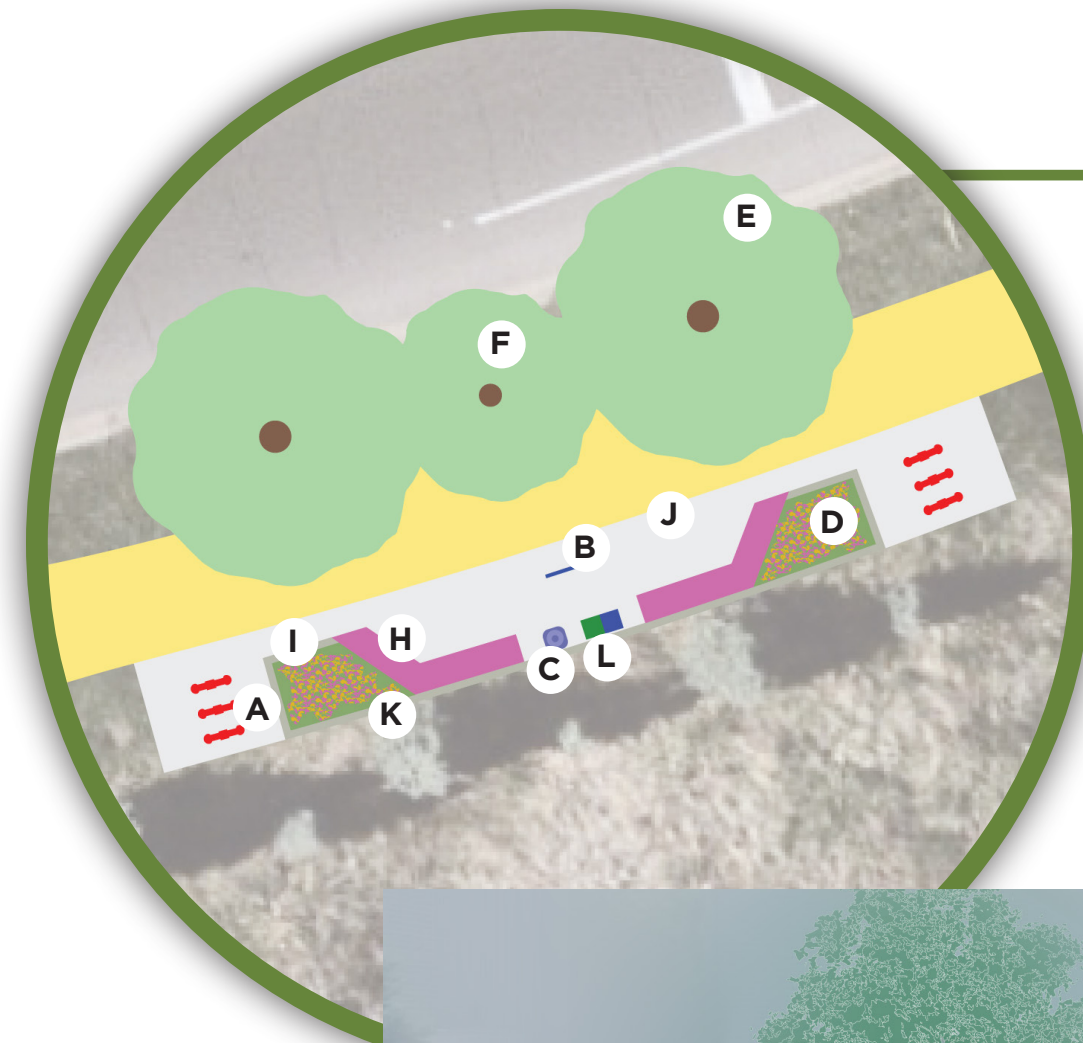
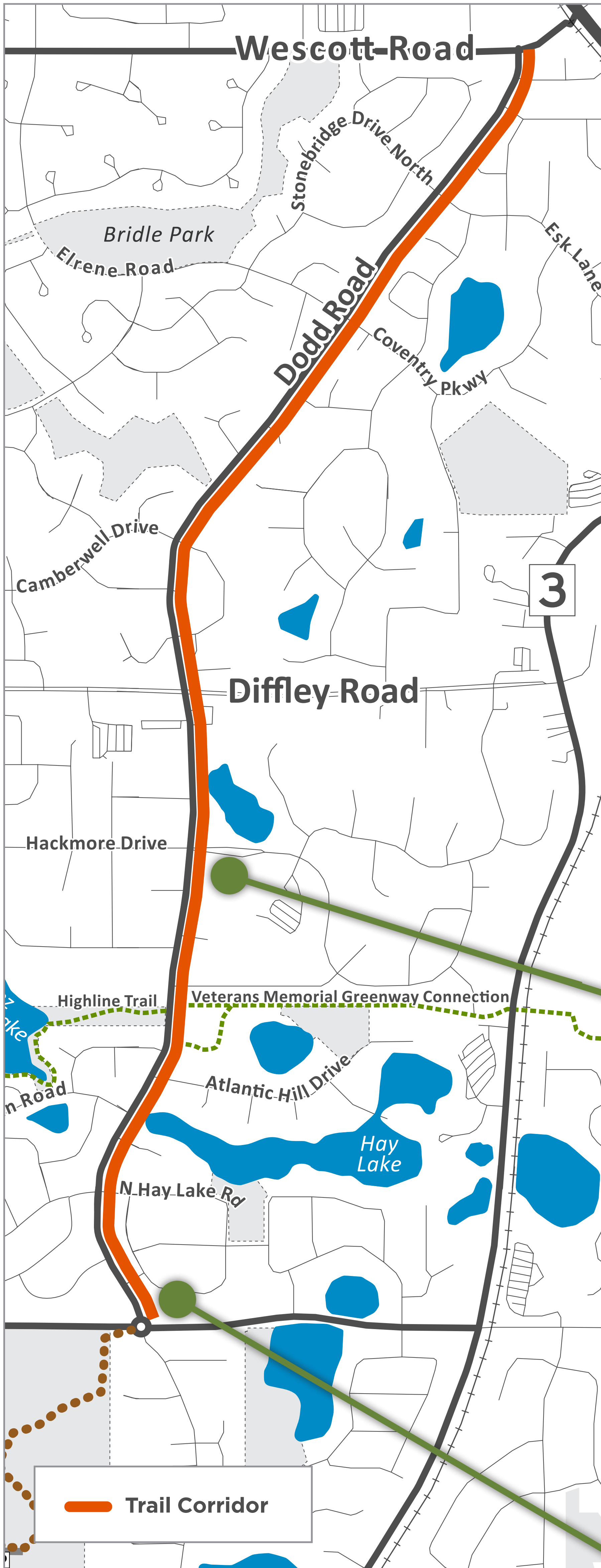
## Learn More Online

Visit the project webpage for more information and to provide input at: [www.dakotacounty.us](http://www.dakotacounty.us), search for Lebanon Hills Greenway



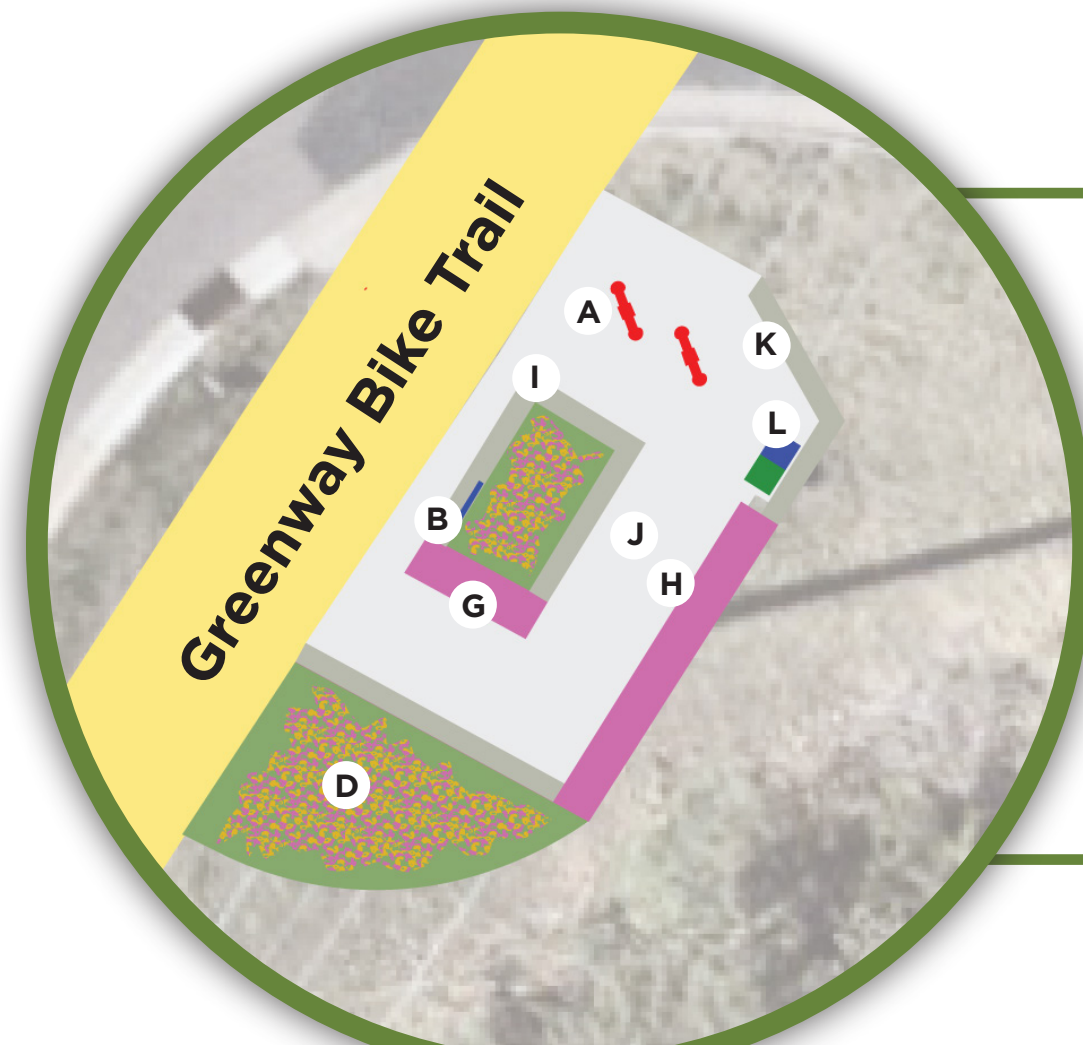
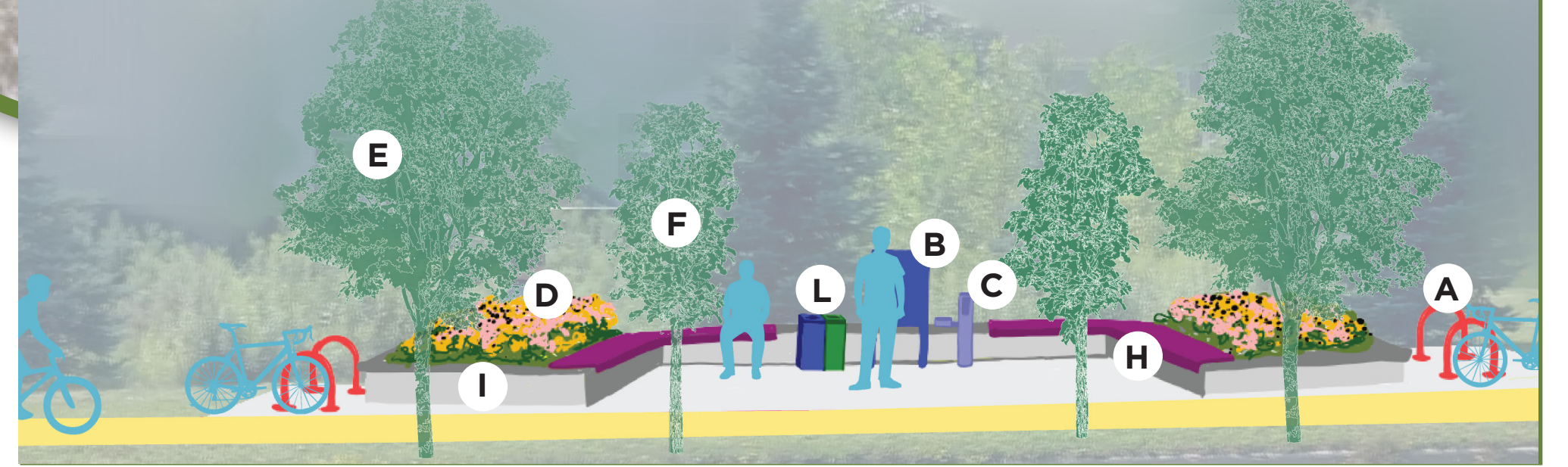
# Lebanon Hills Greenway Potential Nodes & Amenities

Locations and layouts are concepts and subject to change.



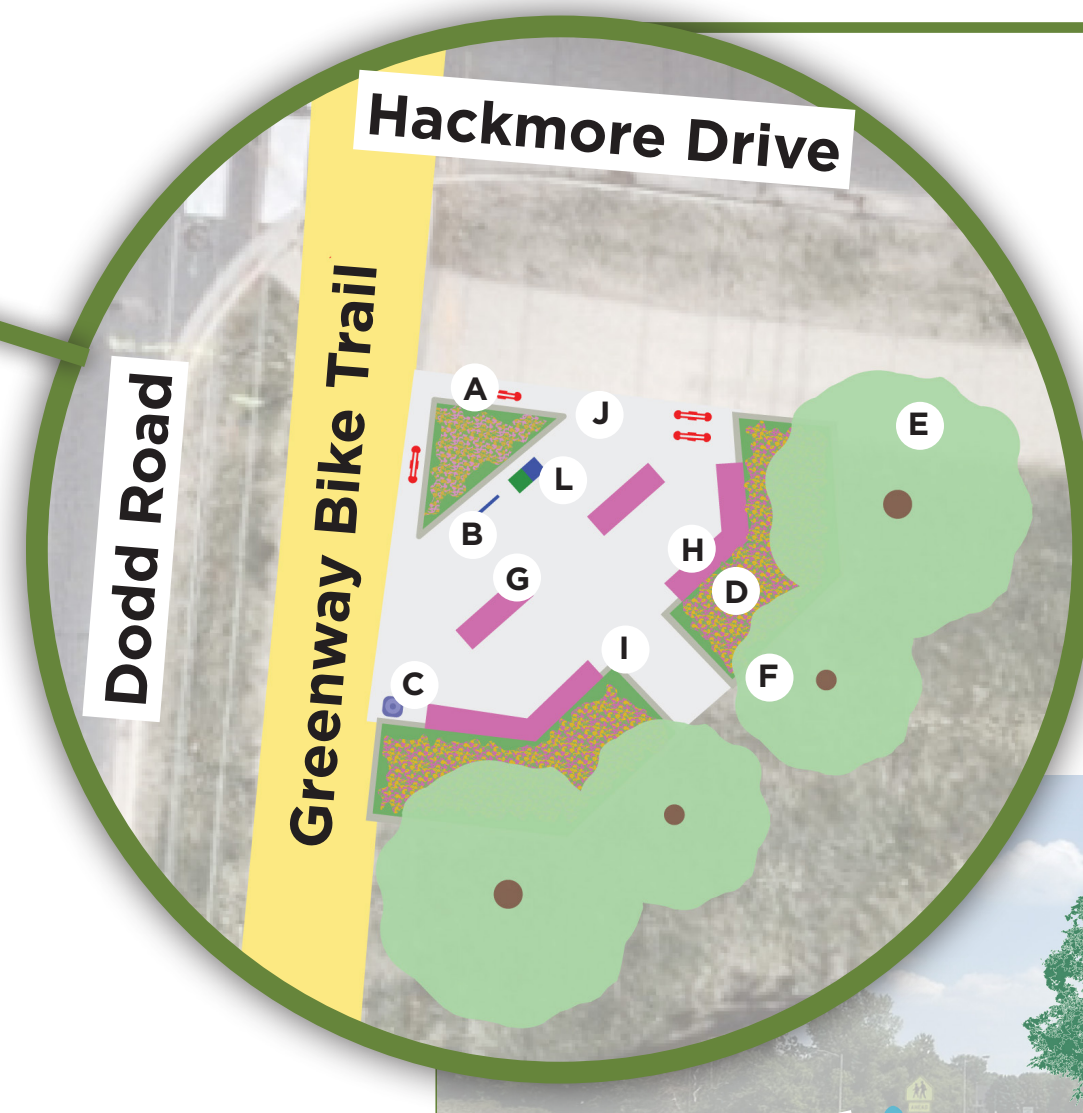
## Node Concept 1 (Gateway Node)

- |                      |                         |
|----------------------|-------------------------|
| Bike Racks           | Seating Wall            |
| Kiosk Way Finding    | Planter Wall            |
| Water Fountain       | Stamped Concrete Paving |
| Pollinator Plantings | Retaining Wall          |
| Canopy Tree          | Trash/Recycling         |
| Ornamental Tree      |                         |



## Node Concept 2

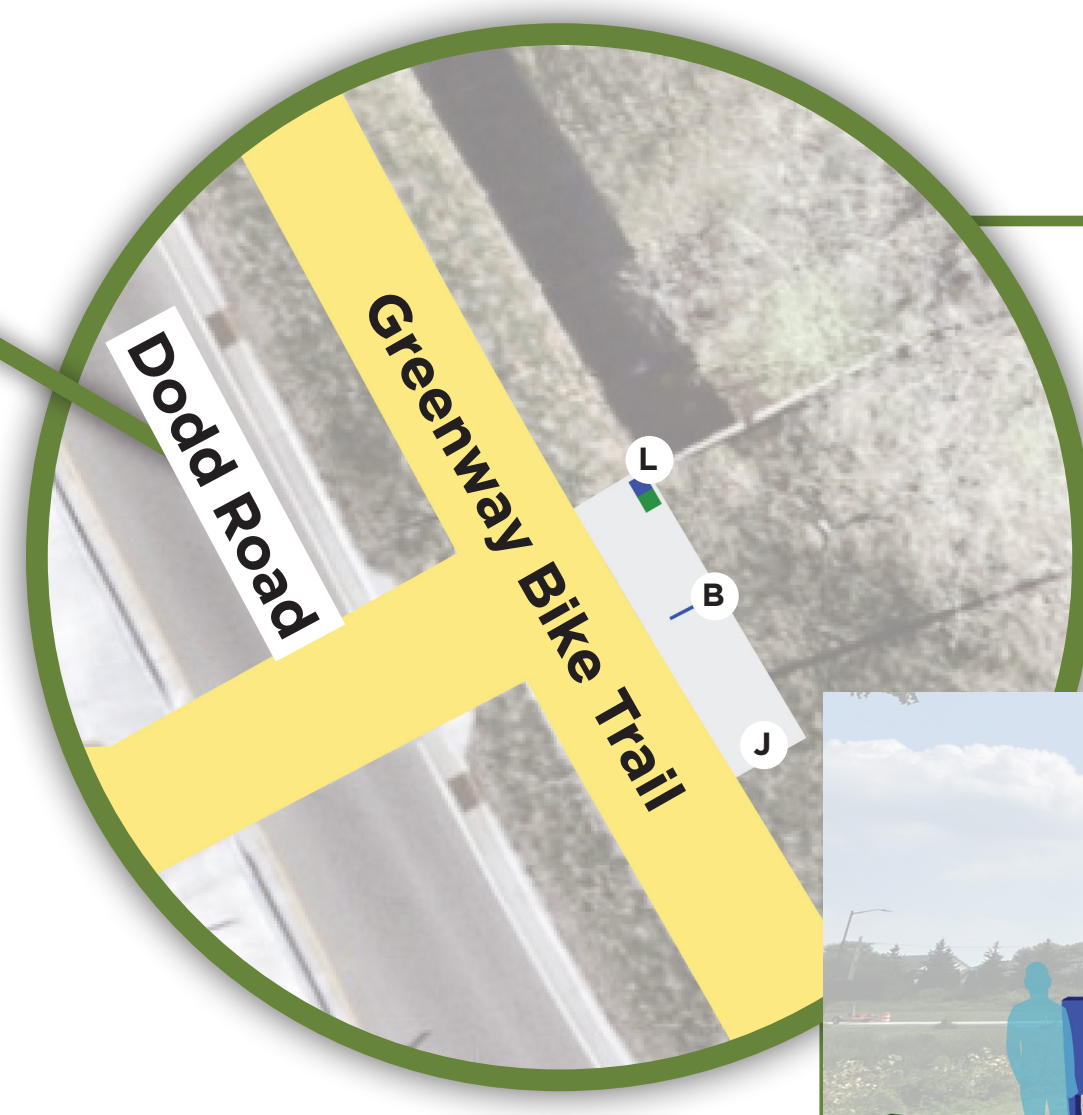
- |                      |                         |
|----------------------|-------------------------|
| Bike Racks           | Planter Wall            |
| Kiosk Way Finding    | Stamped Concrete Paving |
| Pollinator Plantings | Retaining Wall          |
| Bench                | Trash/Recycling         |
| Seating Wall         |                         |



## Node Concept 3 (Seating Node)

SE Corner of Hackmore Drive & Dodd Road

- |                      |                         |
|----------------------|-------------------------|
| Bike Racks           | Bench                   |
| Kiosk Way Finding    | Seating Wall            |
| Water Fountain       | Planter Wall            |
| Pollinator Plantings | Stamped Concrete Paving |
| Canopy Tree          | Trash/Recycling         |
| Ornamental Tree      |                         |



## Node Concept 4

NE Corner of Cliff Road & Dodd Road

- |                         |
|-------------------------|
| Kiosk Way Finding       |
| Stamped Concrete Paving |
| Trash/Recycling         |



- |                               |                                  |
|-------------------------------|----------------------------------|
| <b>A</b> Bike Rack            | <b>G</b> Bench                   |
| <b>B</b> Kiosk Way Finding    | <b>H</b> Seating Wall            |
| <b>C</b> Water Fountain       | <b>I</b> Planter Wall            |
| <b>D</b> Pollinator Plantings | <b>J</b> Stamped Concrete Paving |
| <b>E</b> Canopy Tree          | <b>K</b> Retaining Wall          |
| <b>F</b> Ornamental Tree      | <b>L</b> Trash/Recycling         |

Trail Corridor