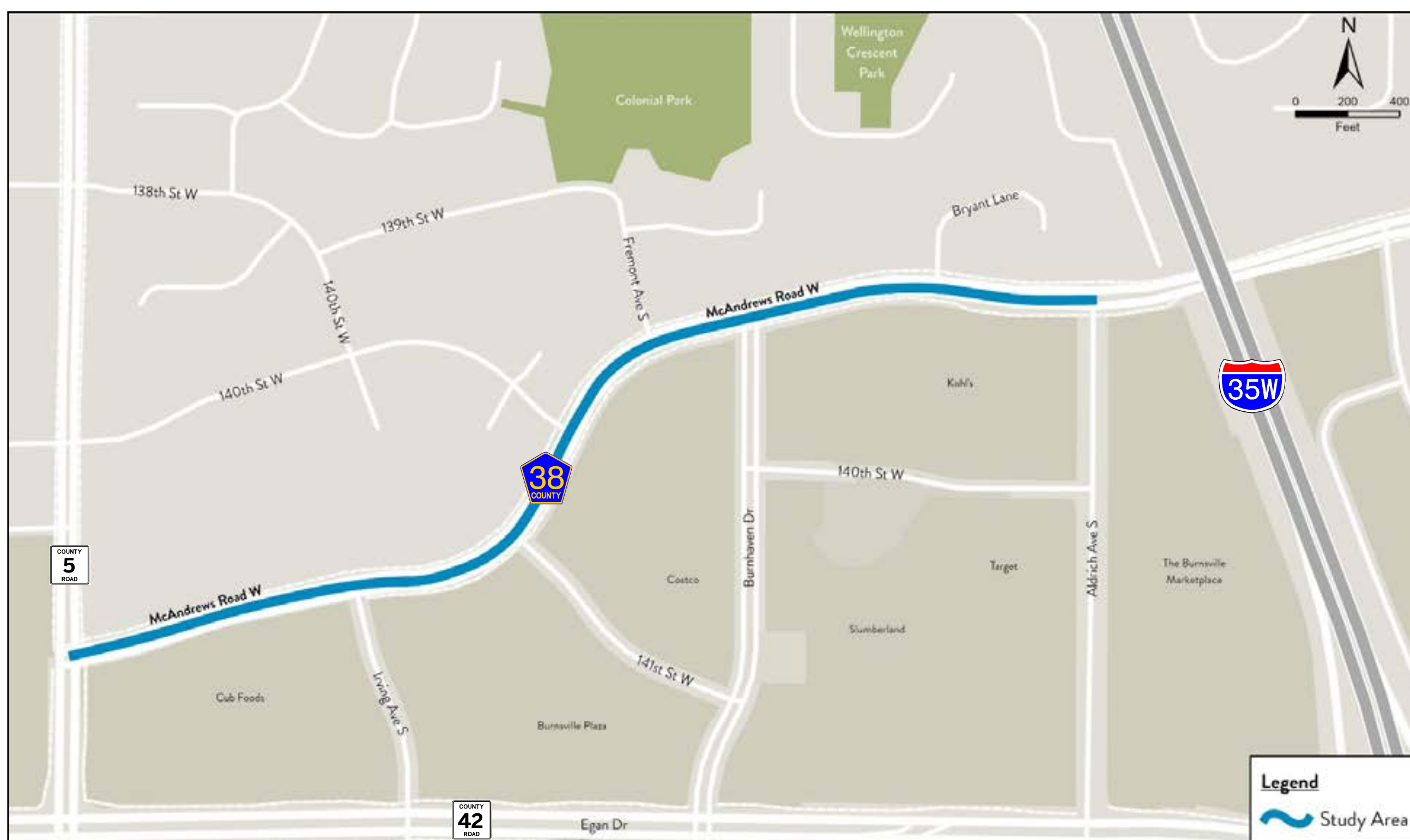


## About this Study

Dakota County and the City of Burnsville are conducting a corridor study along McAndrews Road (County Road 38). The study is from County Road 5 to Aldrich Avenue.



## What is a Corridor Study?

Corridor studies look at current and future needs of a transportation corridor. They look at data and get input from the community to find ways to improve safety and mobility and meet transportation goals.

Any improvements identified would be considered for potential future construction projects.



## Study timeline



Corridor study and community engagement

*Spring-summer 2024*



Alternative concept development

*Summer 2024-Spring 2025*



Study recommendations

*Fall 2025*

*Construction is anticipated to take one year to complete and tentatively planned to take place in 2028, 2029, or 2030.*



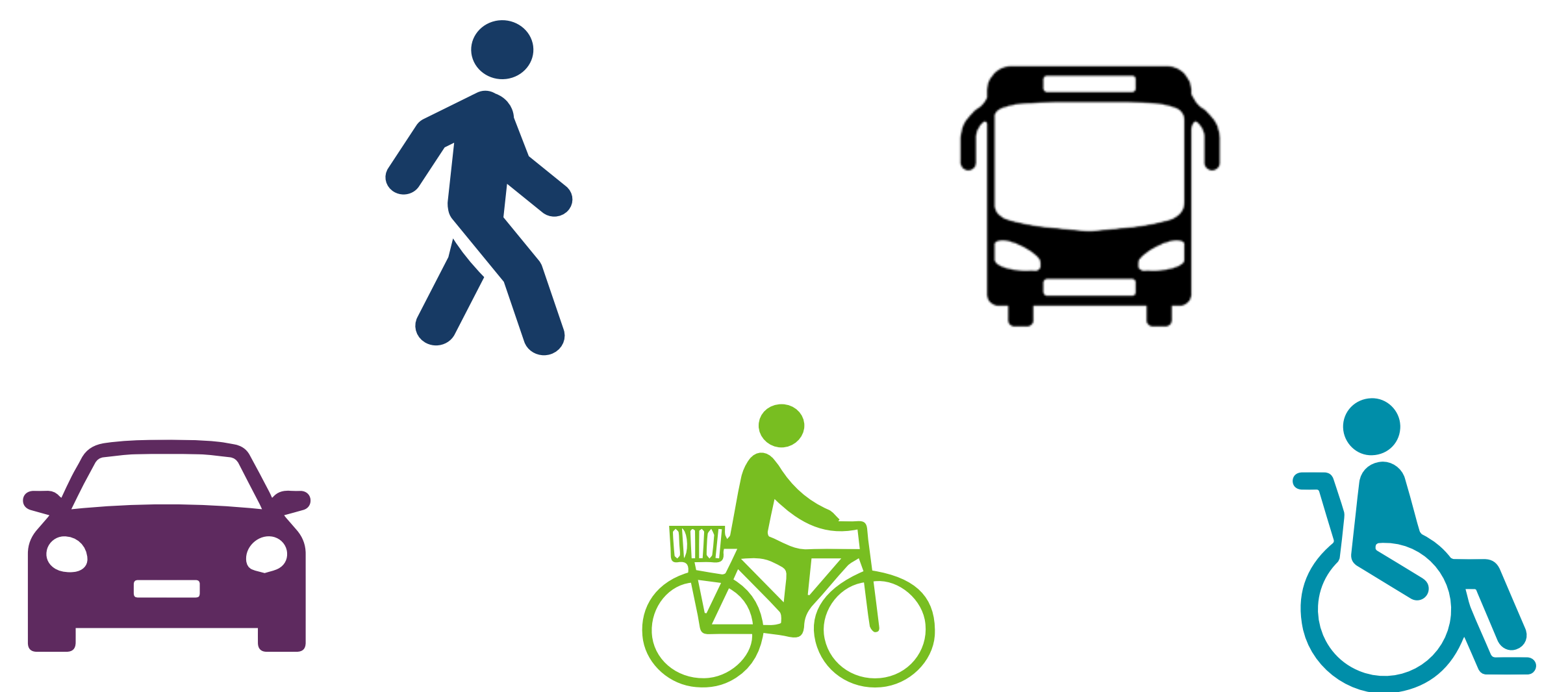


## Project Goals

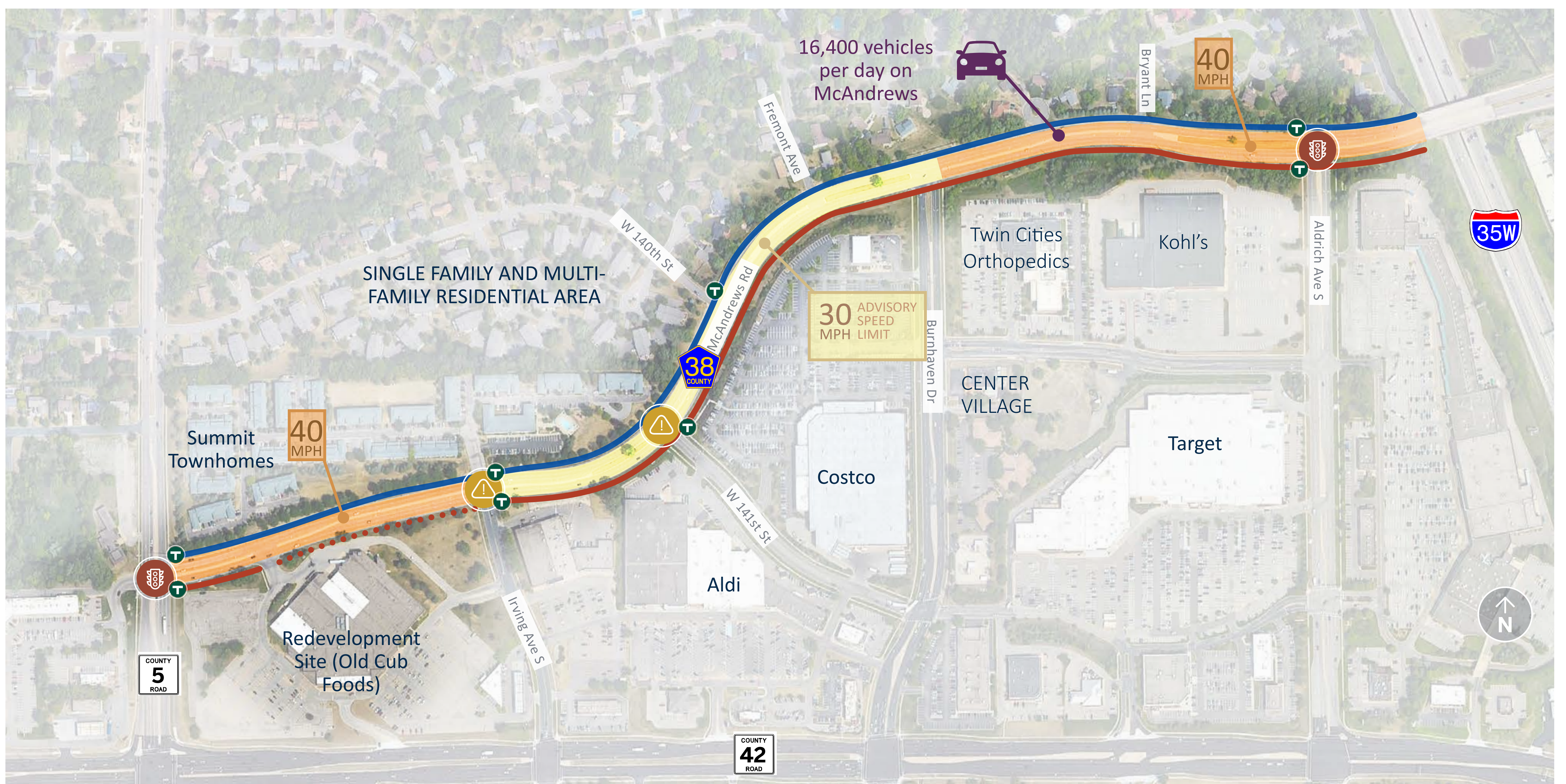
The primary goals of this study include:

- Improve intersection safety at Irving Ave, 141st St, and Burnhaven Dr
- Improve multimodal safety for walking, biking, and riding transit
- Improve crossing safety and connectivity across McAndrews Rd
- Conduct meaningful stakeholder engagement
- Provide preliminary design concepts

*The study aims to determine opportunities to improve safety and mobility for all users in the community.*



## Corridor Context



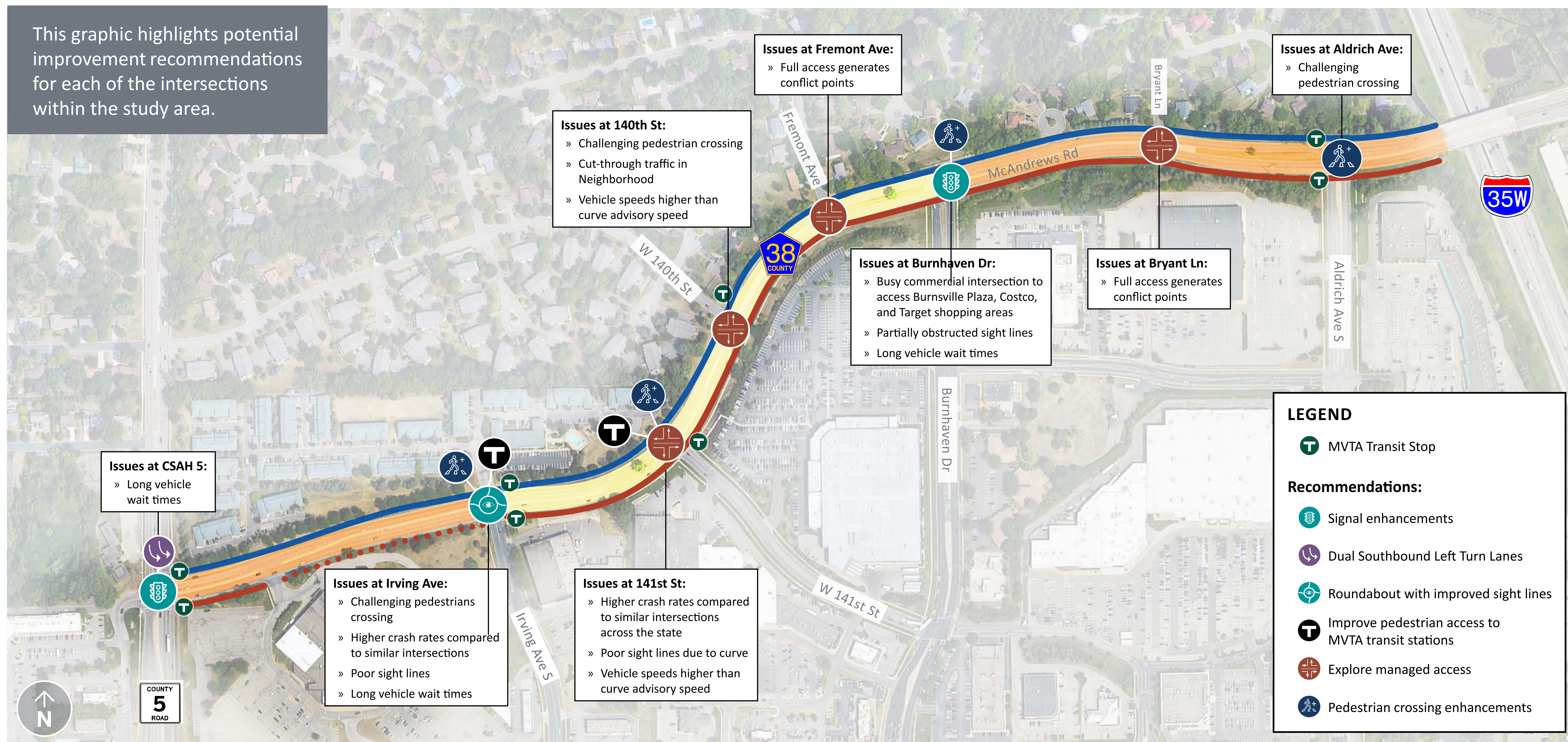
- Signalized intersection
- MVTA Transit Route 444
- Crash/severity rate above critical crash rate
- Existing multi-use trail
- Existing sidewalk
- Sidewalk gap (planned to be addressed with the Cub Foods redevelopment)





## Intersection Issues and Recommendations Under Consideration

This graphic highlights potential improvement recommendations for each of the intersections within the study area.





## Managed Access Under Consideration



### ¾ Access Intersection

- ¾ access eliminates left and through movements from the minor street
- Beneficial in reducing left and right-angle crashes
- Reduces cut-through traffic through residential neighborhoods

#### Potential Locations:

- 141st St
- 140th St
- Bryant Ln



### Right-in/Right-out Intersection

- Right-in/right-out intersection restricts traffic entering and exiting to a right turn only
- Vehicles cannot turn left from the restricted movements
- Beneficial at intersections that experience operational or safety problems

#### Potential Locations:

- Fremont Ave S
- McAndrews Rd Ct

## Multimodal and Crossing Enhancements

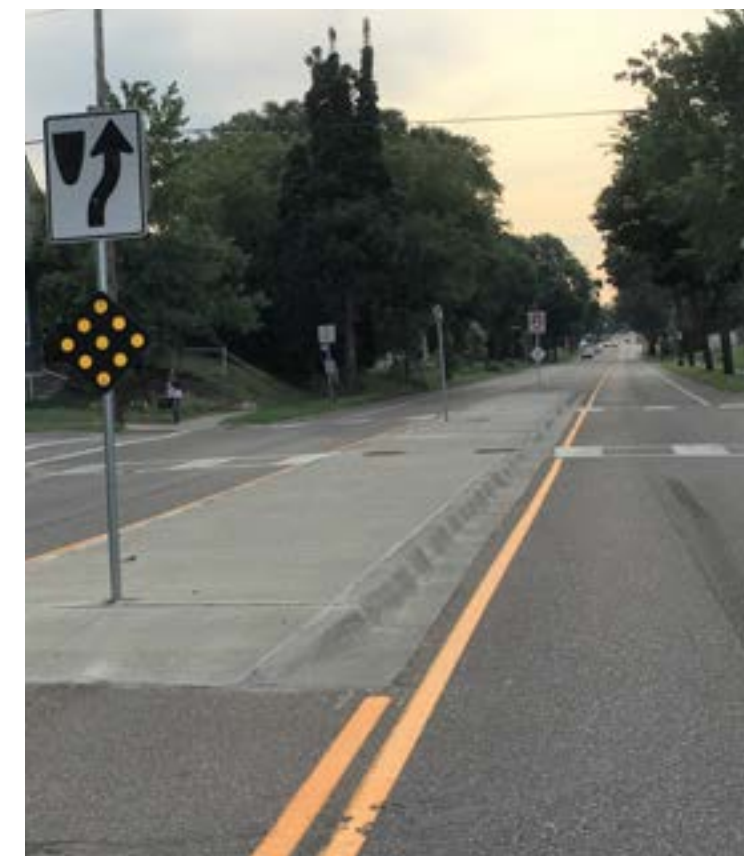


### Multi-use Trails

- Identified opportunities to include 10-ft multi-use trails on both sides of McAndrews Rd
- Would improve multimodal connectivity and comfort along the roadway

#### Recommended Location:

- Length of corridor, both sides

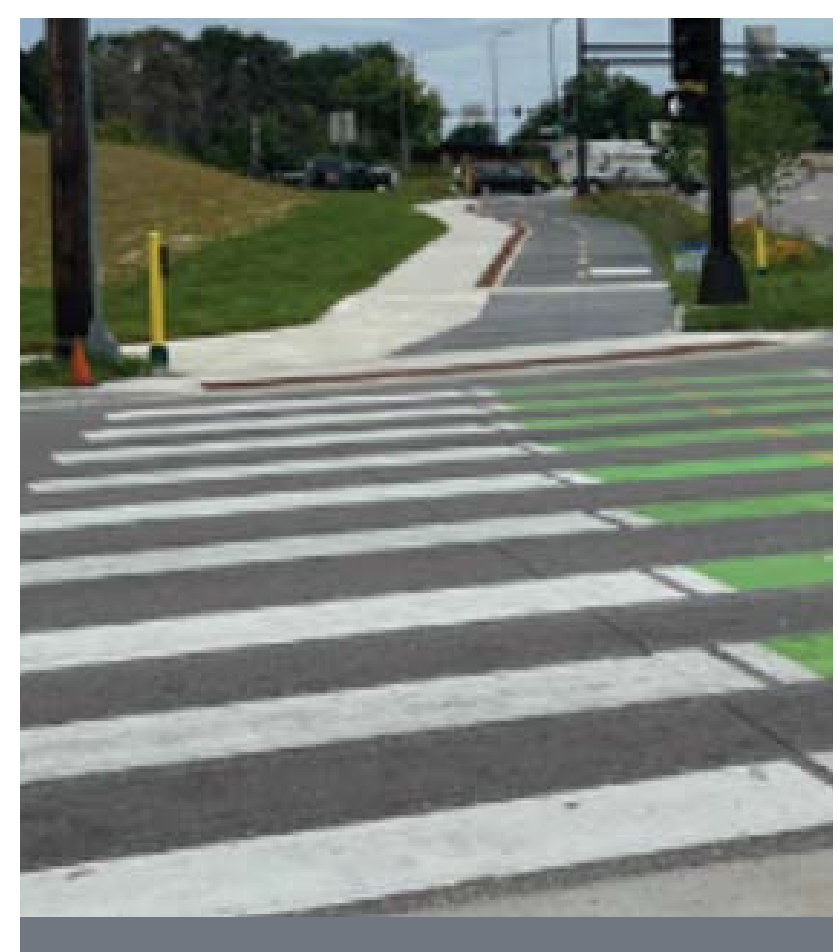


### Center Median/Pedestrian Refuge Island

- Center medians (or refuge/center islands) provide a place of refuge for people crossing
- Allows pedestrians to focus on crossing one direction of traffic at a time
- Provides more safe gaps in traffic

#### Recommended Locations:

- Irving Ave
- Burnhaven Ave
- 141st St
- Aldrich Ave S



### Marked Crossing and Pedestrian Signaling

- Marked crosswalks indicates to pedestrians the recommended crossing location
- May be recommended locations without signals or stop signs
- Improves driver awareness

#### Recommended Locations:

- CSAH 5
- Burnhaven Ave
- Irving Ave
- Aldrich Ave S

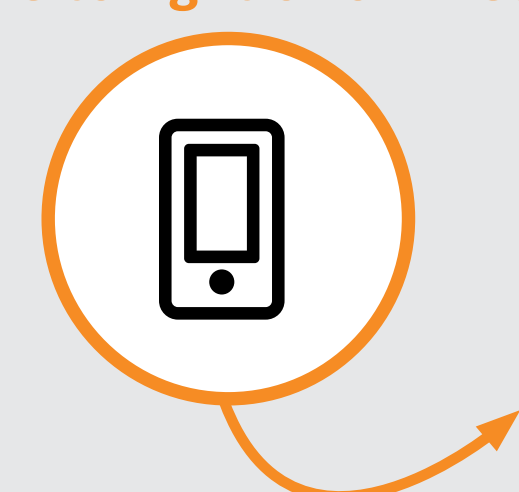


### Accessible Pedestrian Signals (APS)

- Improves the communication features for pedestrians with visual impairments
- Communicates information about WALK and DON'T WALK intervals at signalized intersections through audible tones or speech messages
- Could be recommended at existing or future signals

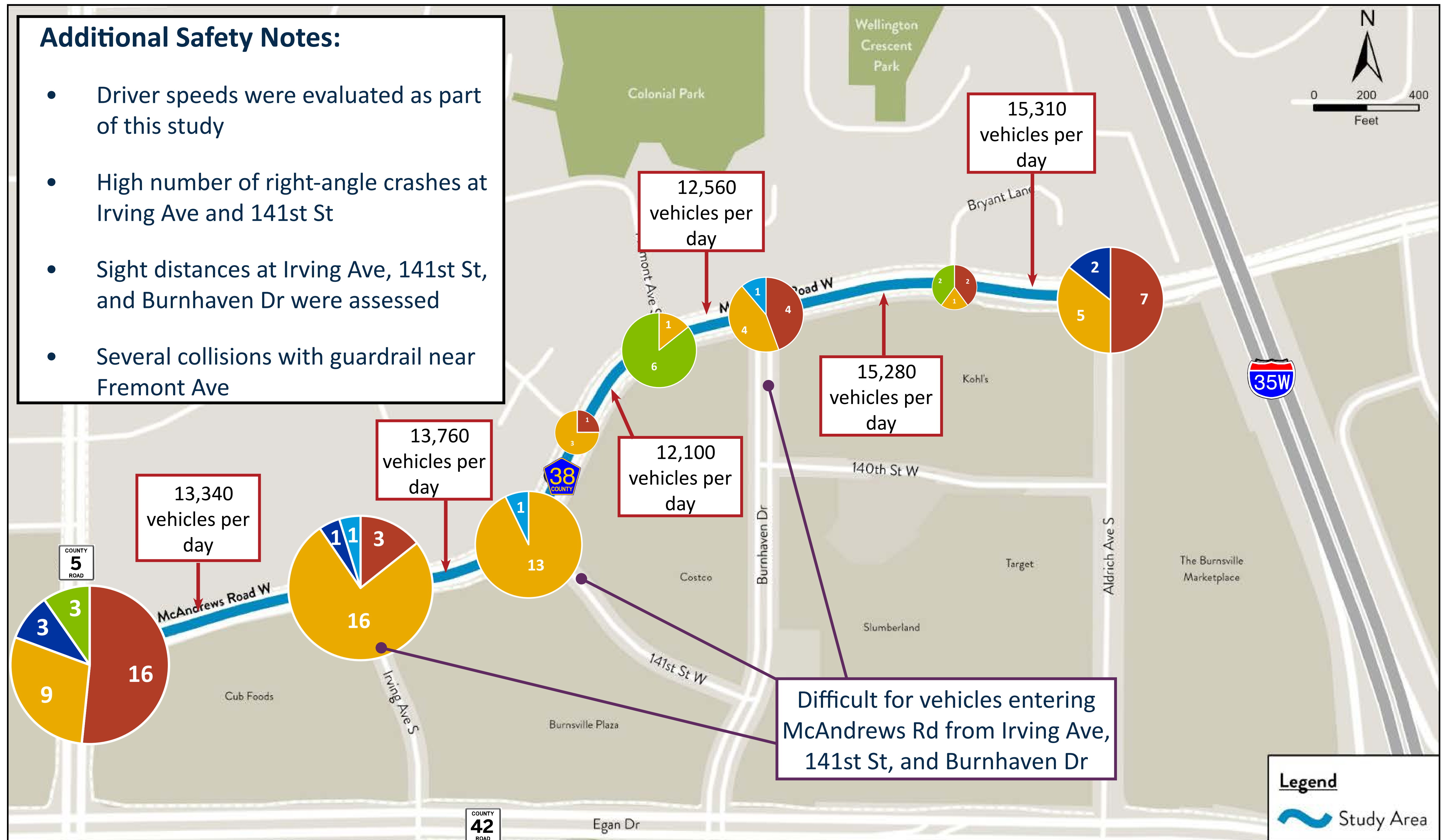
#### Recommended Location:

- Burnhaven Ave





## Vehicle Crash History (2019 - 2023) and Yearly Traffic Volumes



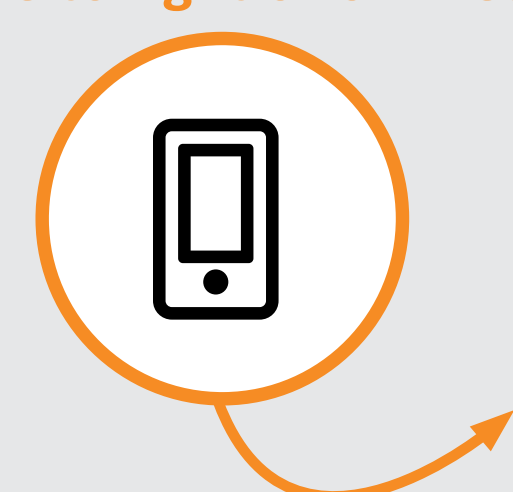
Irving Ave



141st St



Burnhaven Dr





## Where do you live, work, and visit?

Place colored dots on the map to show where you (●) live, (●) work, and (●) visit.

If locations are not on the map, place the dots in the margins.

*This information helps us understand who we are reaching!*

