

Welcome!



Learn more about upcoming improvements to Miesville Ravine Park Reserve!

Implementing the Long-range Plan

Miesville Ravine Park Reserve recently completed its long-range plan, and Dakota County has set aside \$1 million in funding to begin construction on the first phase of improvements between 2025-2026.

What's being proposed?

The first half of 2025 is devoted to exploring which proposed elements can be built using the given budget. Park improvements are focused on the Cannon River and Lower Trout Brook Trailheads, in order to make visitor arrival more welcoming and offer accessible amenities. The project aims to provide the following, as budget and permitting allow:

Improvements to the Cannon River Trailhead

- A new entry and parking for easier, more legible access to the water
- A turnaround and dropoff area for vehicles
- A new ADA-accessible water access for paddlers and tubers
- A portable restroom enclosure nearer to the Cannon River water access
- New ADA-accessible fishing access points on the Cannon River and Trout Brook
- Surfacing improvements to the 1/2 mile loop trail along the Cannon River to make it ADA-accessible
- Riverside and savanna picnic areas
- Drinking water
- Accessibility improvements to the existing restroom building
- Wayfinding improvements

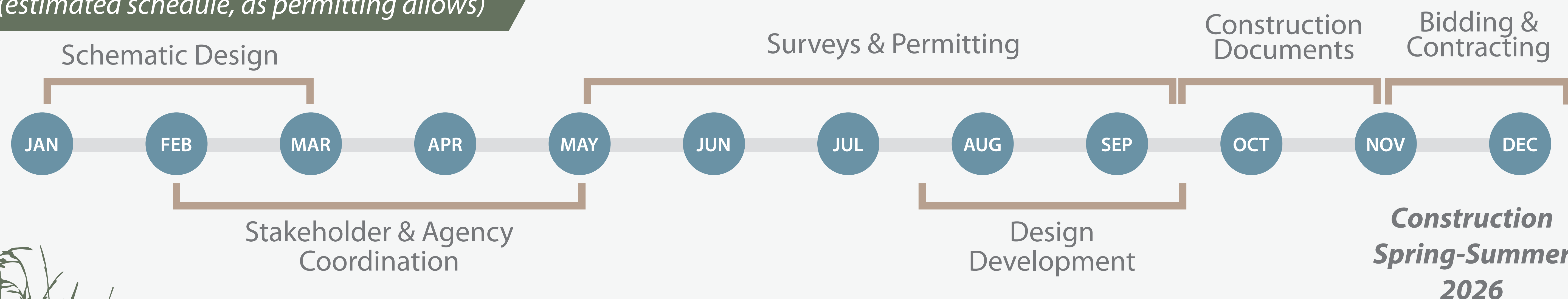


Improvements to the Lower Trout Brook Trailhead

- Picnic tables
- A portable restroom enclosure
- A new bridge over Trout Brook to replace the existing bridge, which is eroding
- A new Trout Brook fishing access point
- Wayfinding improvements

2025 Timeline

(estimated schedule, as permitting allows)



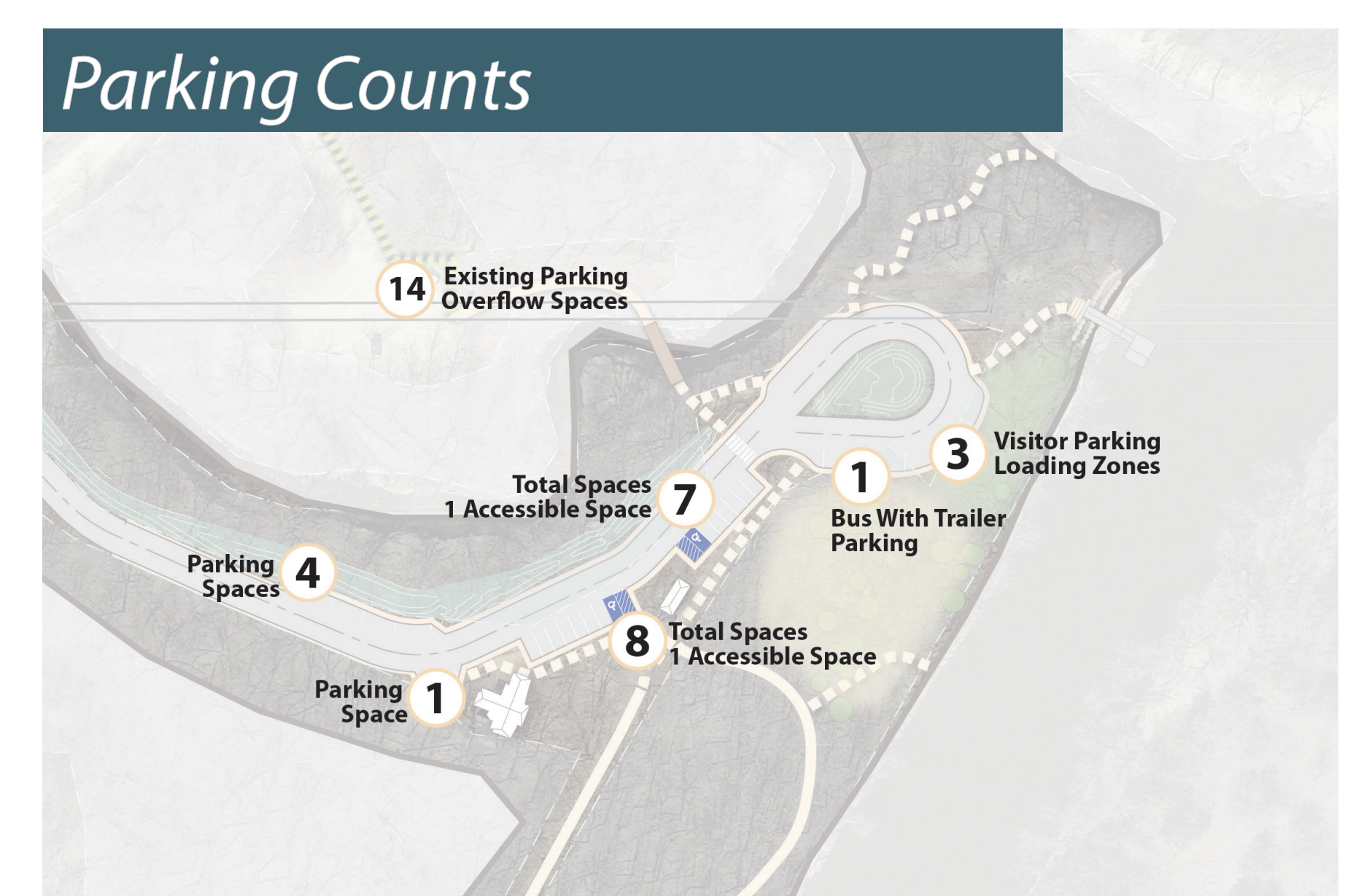
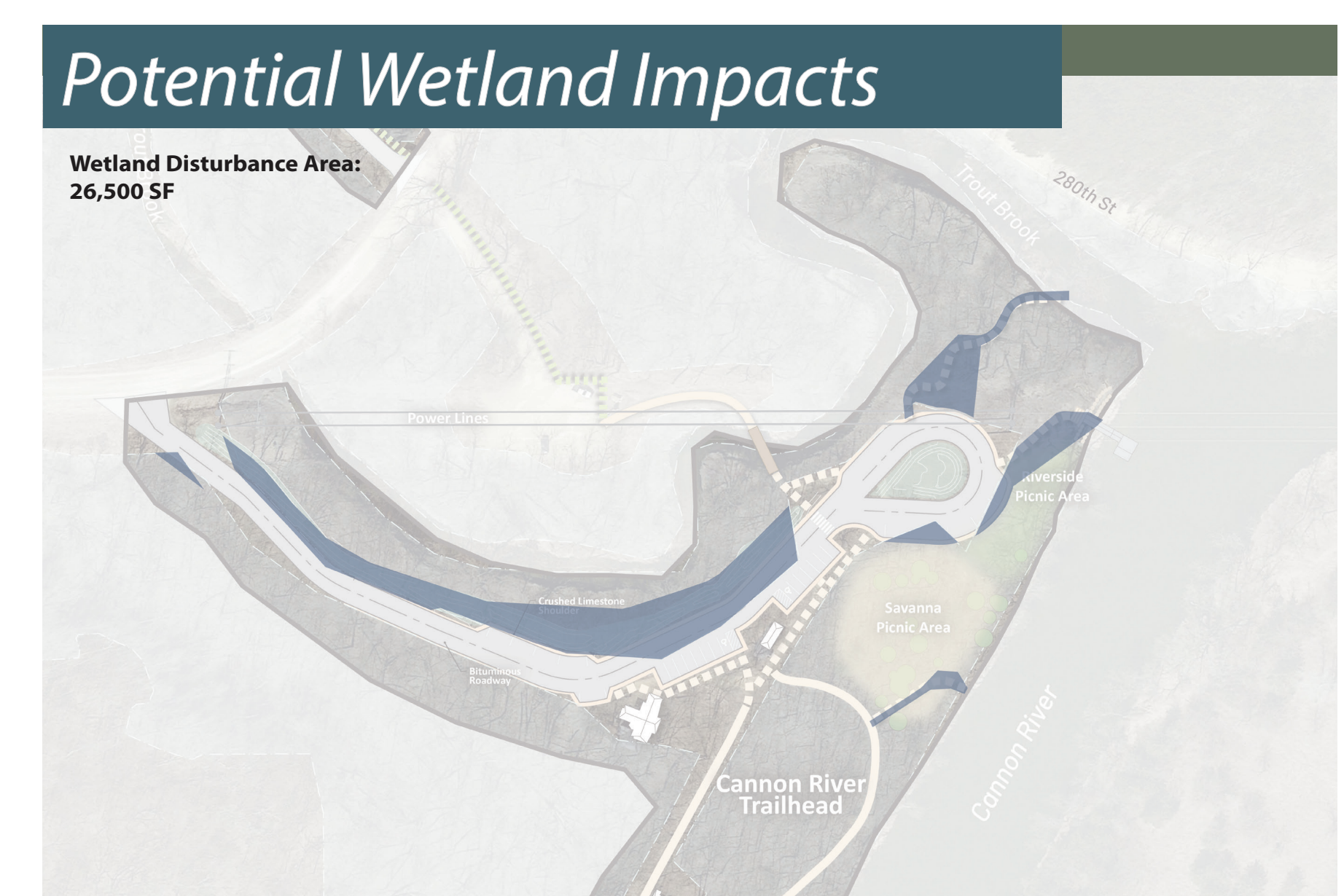
Concept Exploration



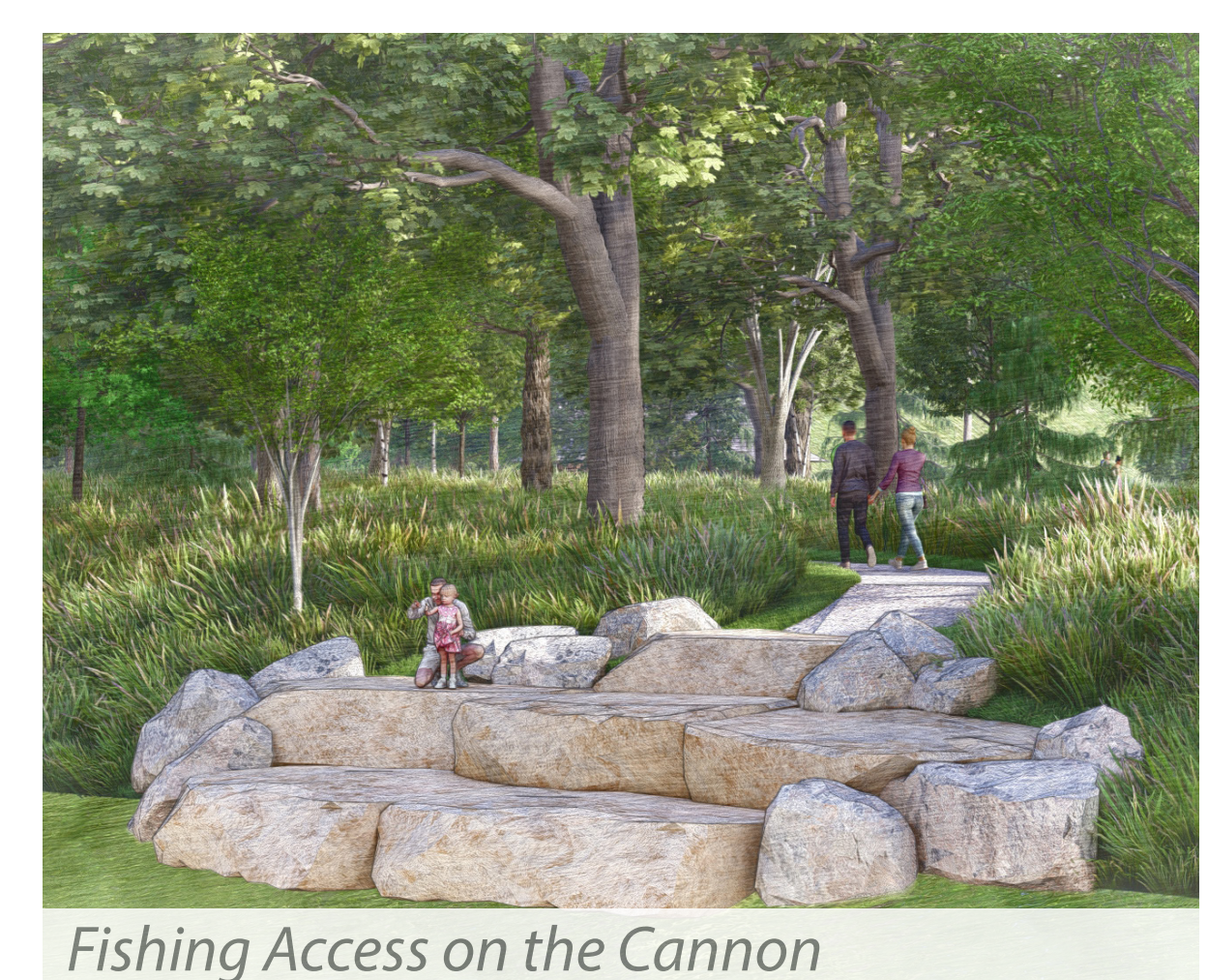
Cannon River Trailhead - Improved Access Amenities



Analysis Diagrams:



Visualization:



Concept Exploration



Lower Trout Brook Trailhead

Proposed improvements to the Lower Trout Brook Trailhead include new comfort amenities, including additional picnic tables and a portable restroom enclosure, along with updated park information and wayfinding where the trail meets the existing parking lot. The current bridge over Trout Brook is in poor shape and needs to be replaced. In order to prevent future impacts from flooding, a new bridge will be installed along a more stable section of bank. A new path connection between the new bridge and the existing trails will be installed, and a segment of the old trail will be renaturalized. An accessible fishing platform will be installed at the bridge's current location and the banks beneath the former bridge will be restored.



Visualization:



Precedent Imagery



Additional Picnic Tables



Portable restroom enclosure



New Bridge