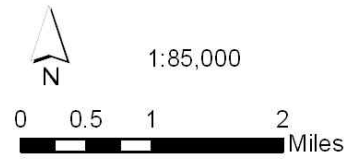
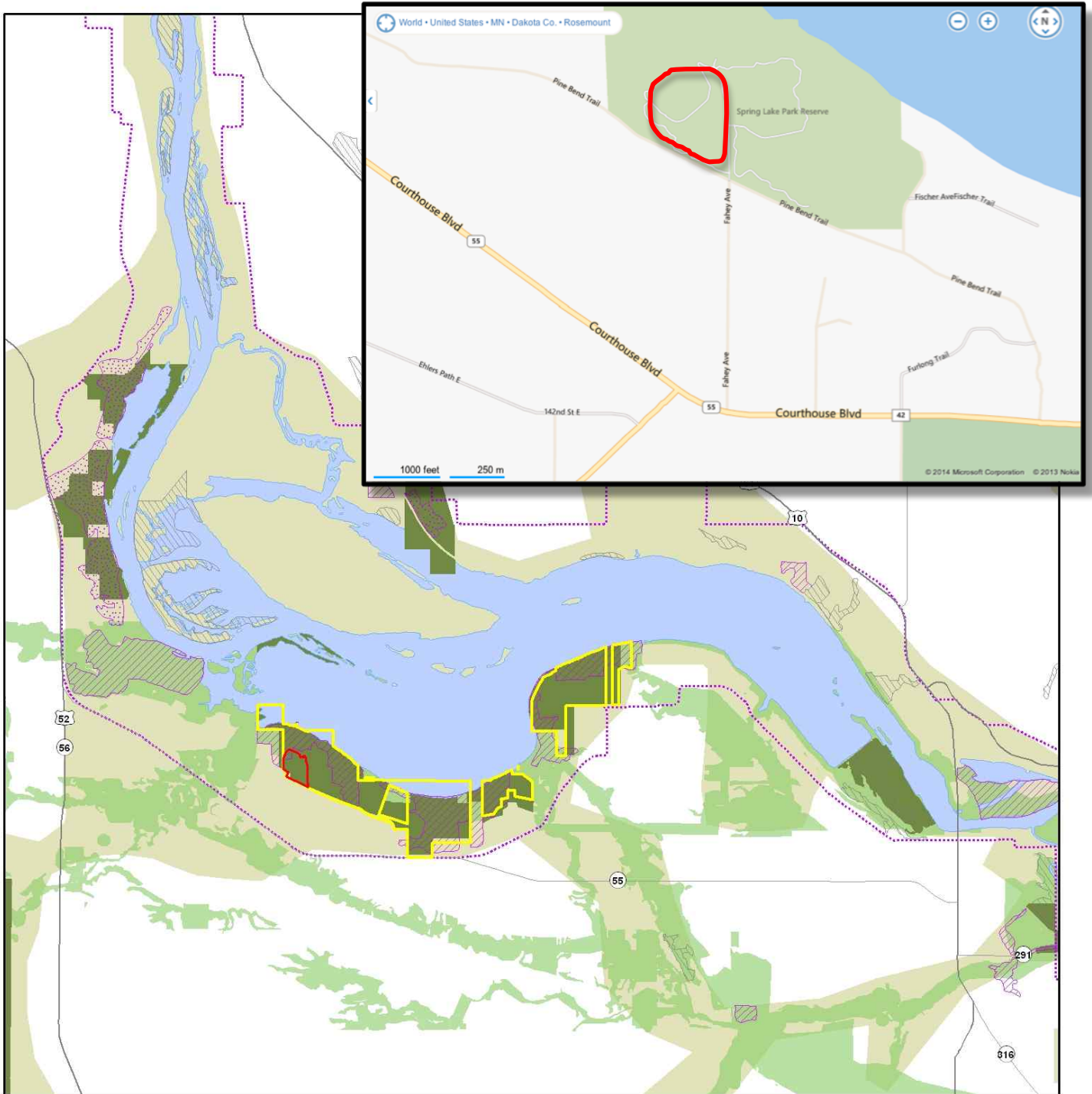


Project Maps

Map 1. Spring Lake Park Reserve Location

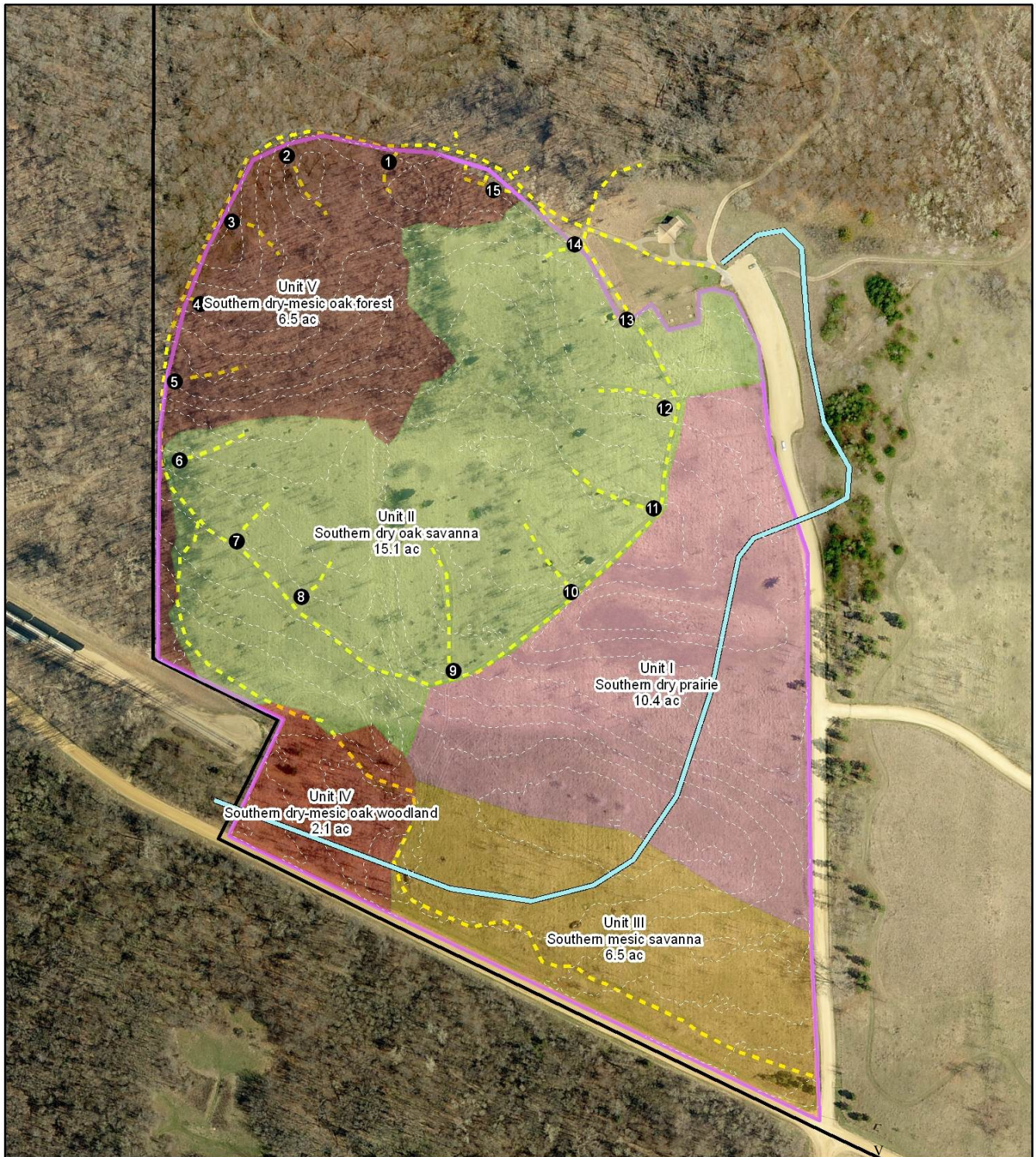


- | | |
|--|---|
|  Project Area (41 ac) | Biological Diversity |
|  Spring Lake Park |  Outstanding |
|  MNRRRA corridor |  High |
|  Parks, WMAs, SNAs |  Moderate |
|  Mississippi Greenway | |
|  Metro Conservation Corridors | |

MAP 2. PROJECT AREA AND RESTORATION GOALS

Spring Lake Park Reserve

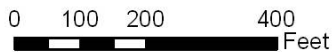
Numbered loop is the archery trail.



2008 Aerial, 2-ft contours - Dakota County



1:3,092



- Spring Lake Park Boundary
- Management Area 41 ac
- Planned Regional Trail (approx)