

For information about  
the Byllesby Dam, contact:

Dakota County: 952-891-7000

Additional information is available at  
[www.dakotacounty.us](http://www.dakotacounty.us), search *Byllesby Dam*



Cannon Falls Police Department  
918 River Road  
Cannon Falls, MN 55009



## Byllesby Dam Evacuation Plan

**READ AND KEEP THIS BROCHURE**

# Byllesby Dam Evacuation Plan

An action plan for residents and visitors in  
Cannon Falls and the Lake Byllesby area



**READ AND KEEP THIS BROCHURE**



This brochure is for residents and visitors near the Lake Byllesby Dam area.

Dakota County has owned the dam since 1969 and it has been safely operated for over a century. Responsible ownership means Dakota County, Goodhue County, Cannon Falls Police and other partners maintain a well-rehearsed emergency plan in the unlikely event of a structural failure that could cause rapid flooding downstream.

That plan includes the following direction for people in the Cannon Falls area during a failure of the dam:

## LISTEN

Listen for the special siren indicating a failure at the dam.



## GET OUT

Leave your home immediately with only people and pets.



## GATHER

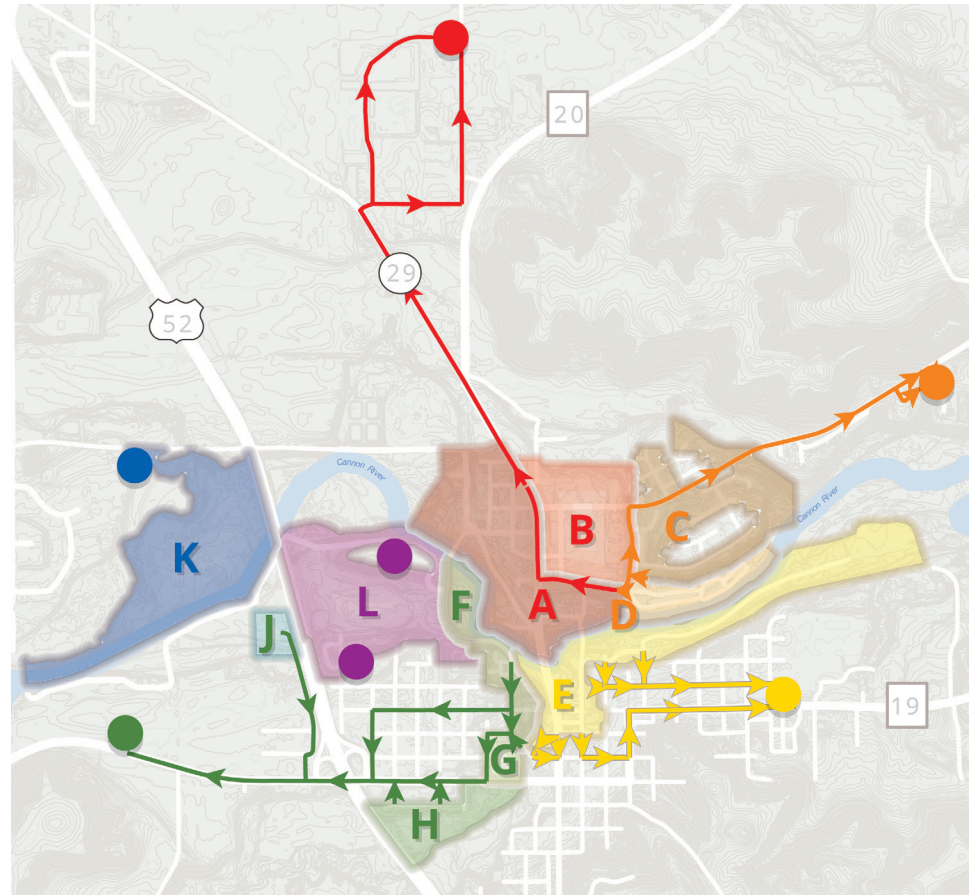
Meet at your designated evacuation assembly location.



**There are just minutes to evacuate, so only take people and pets with you.** Once at the collection point, move to allow others to safely arrive. Law enforcement and first responders will collect your information and provide instructions.

## ZONE ASSEMBLY LOCATIONS

<b>A-B</b>	North Park Drive	<b>F-G</b> <b>H-J</b>	Riverwood Community Church
<b>C-D</b>	Sunflower Court	<b>K</b>	Cannon Golf Club
<b>E</b>	Cannon Falls High School	<b>L</b>	Higher Ground

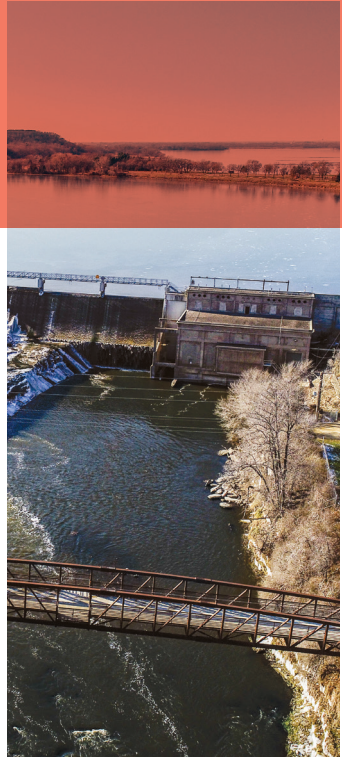


# Byllesby Dam Evacuation Plan

An action plan for residents in Zones A and B of the Byllesby Dam Evacuation Area.

You are receiving this information because you live in an area of Cannon Falls that would need to be evacuated in the unlikely event of a structural failure of the Byllesby Dam that could cause rapid flooding downstream.

Please review the instructions and evacuation map on the back of this brochure.

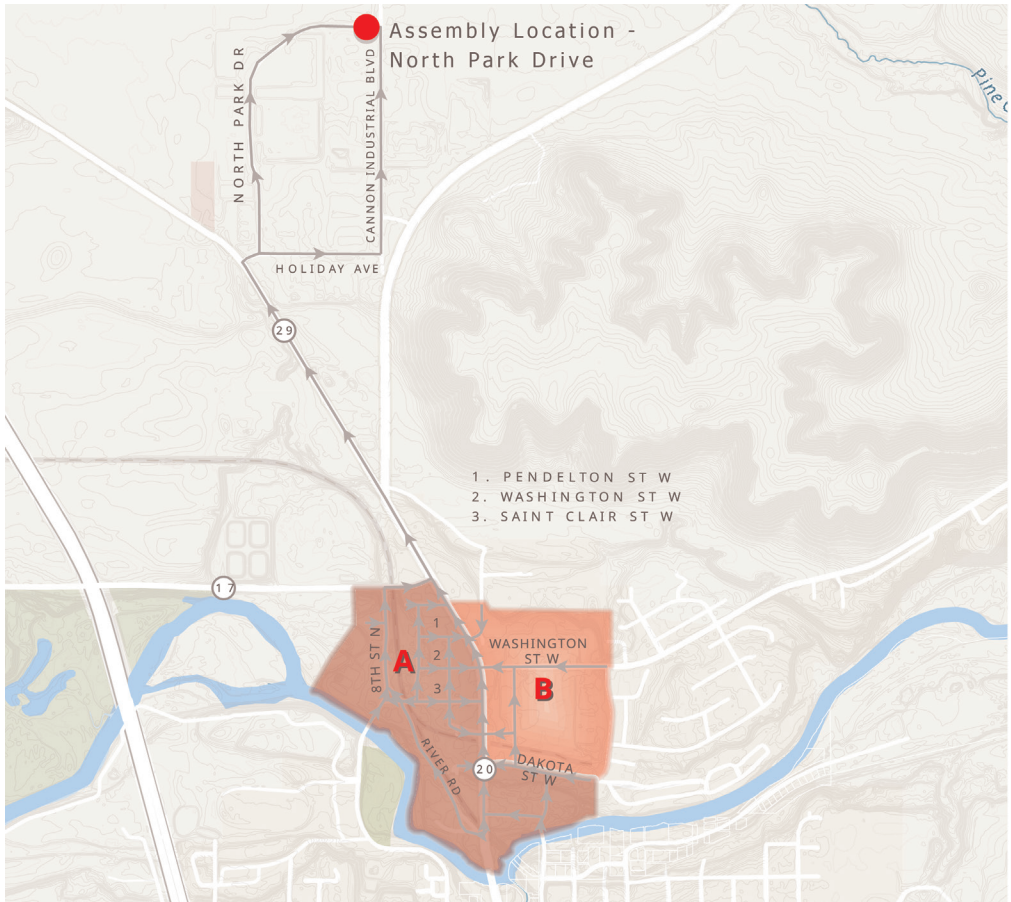


**If you have an emergency during an evacuation related to the Byllesby Dam, call 911.**





# EVACUATION ZONES A & B



## WHAT TO DO:

- In the event of a flood evacuation, Zones A and B will follow the **RED** evacuation route signs to the collection point located at **North Park Drive**.
- There are just minutes to evacuate, so only take people and pets with you.
- Once at the collection point, move to allow others to safely arrive. Law enforcement and first responders will collect your information and provide instructions.



**PLEASE KEEP THIS BROCHURE IN A  
CONVENIENT LOCATION IN YOUR HOME**

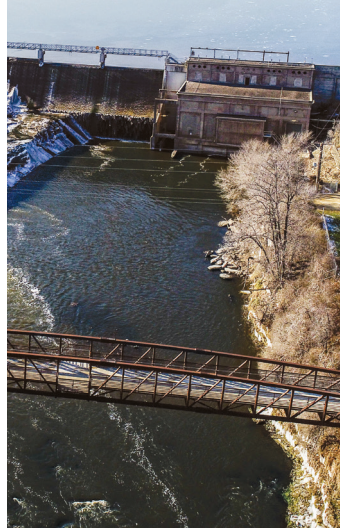
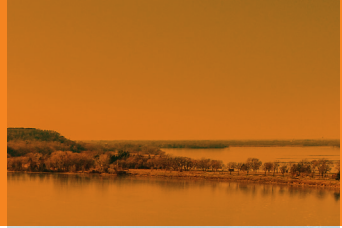
# Byllesby Dam Evacuation Plan

An action plan for residents in Zones C and D of the Byllesby Dam Evacuation Area.

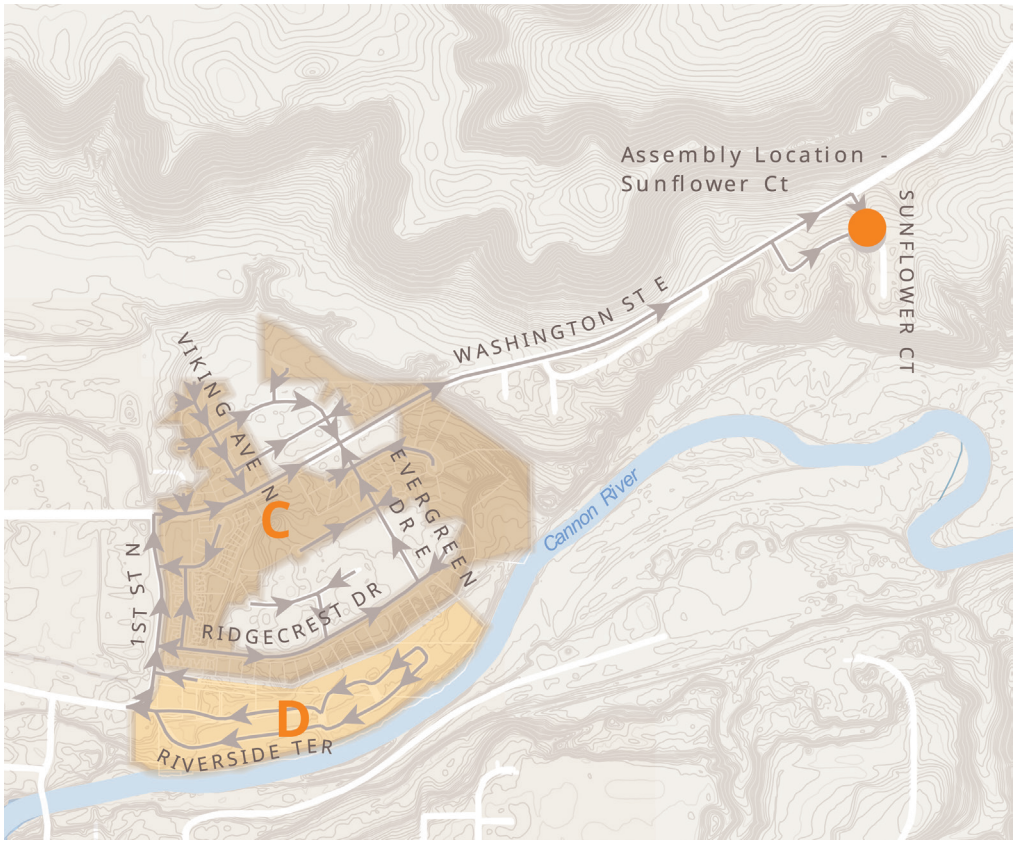
You are receiving this information because you live in an area of Cannon Falls that would need to be evacuated in the unlikely event of a structural failure of the Byllesby Dam that could cause rapid flooding downstream.

Please review the instructions and evacuation map on the back of this brochure.

**If you have an emergency during an evacuation related to the Byllesby Dam, call 911.**



# EVACUATION ZONES C & D



## WHAT TO DO:

- In the event of a flood evacuation, Zones C and D will follow the **ORANGE** evacuation route signs to the collection point located at **Sunflower Court**.
- There are just minutes to evacuate, so only take people and pets with you.
- Once at the collection point, move to allow others to safely arrive. Law enforcement and first responders will collect your information and provide instructions.



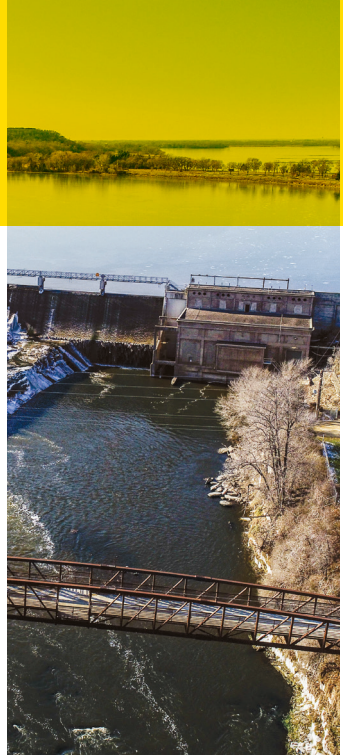
**PLEASE KEEP THIS BROCHURE IN A  
CONVENIENT LOCATION IN YOUR HOME**

# Byllesby Dam Evacuation Plan

An action plan for residents  
in Zone E of the Byllesby  
Dam Evacuation Area.

You are receiving this information because you live in an area of Cannon Falls that would need to be evacuated in the unlikely event of a structural failure of the Byllesby Dam that could cause rapid flooding downstream.

Please review the instructions and evacuation map on the back of this brochure.

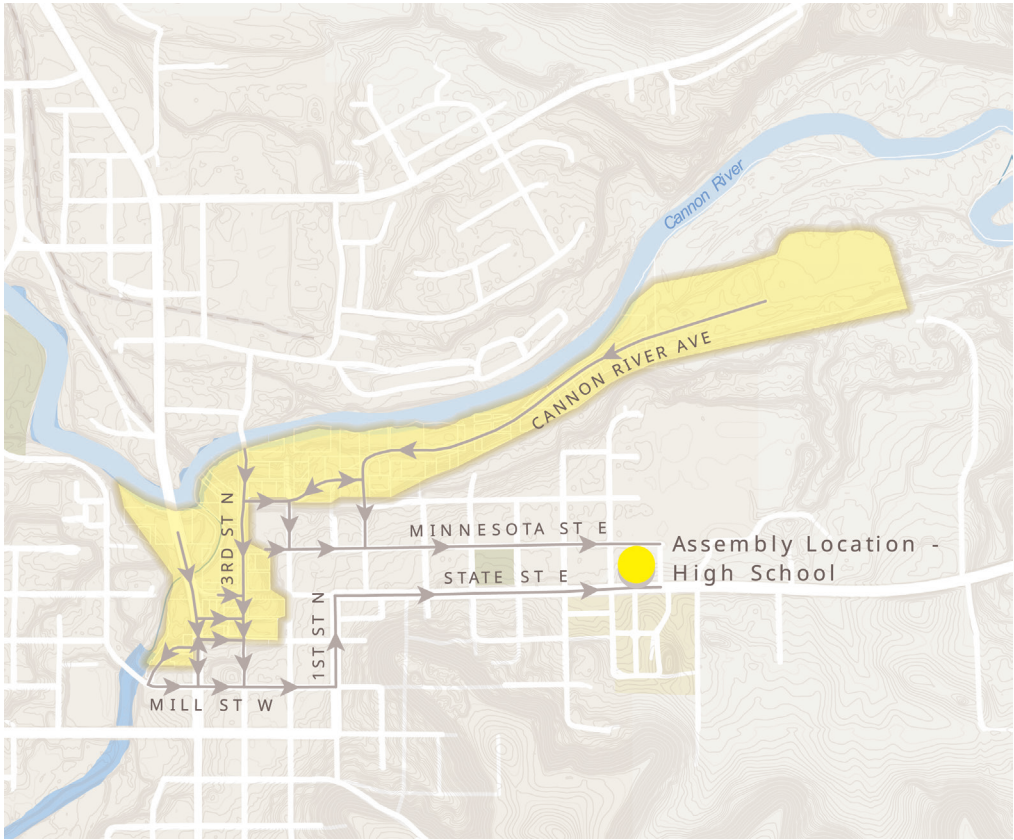


**If you have an emergency during an evacuation related to the Byllesby Dam, call 911.**





# EVACUATION ZONE E



## WHAT TO DO:

- In the event of a flood evacuation, Zone E will follow the **YELLOW** evacuation route signs to the collection point located at **Cannon Falls High School**.
- There are just minutes to evacuate, so only take people and pets with you.
- Once at the collection point, move to allow others to safely arrive. Law enforcement and first responders will collect your information and provide instructions.



**PLEASE KEEP THIS BROCHURE IN A  
CONVENIENT LOCATION IN YOUR HOME**

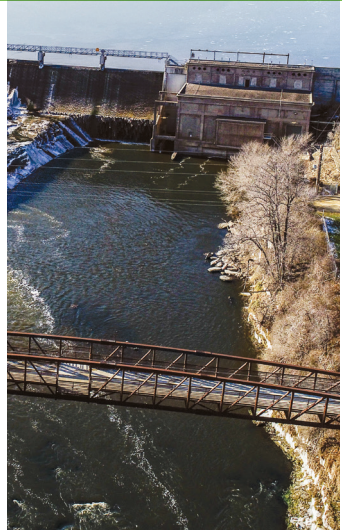


# Byllesby Dam Evacuation Plan

An action plan for residents  
in Zones F, G, H & J of the  
Byllesby Dam Evacuation Area.

You are receiving this information because you live in an area of Cannon Falls that would need to be evacuated in the unlikely event of a structural failure of the Byllesby Dam that could cause rapid flooding downstream.

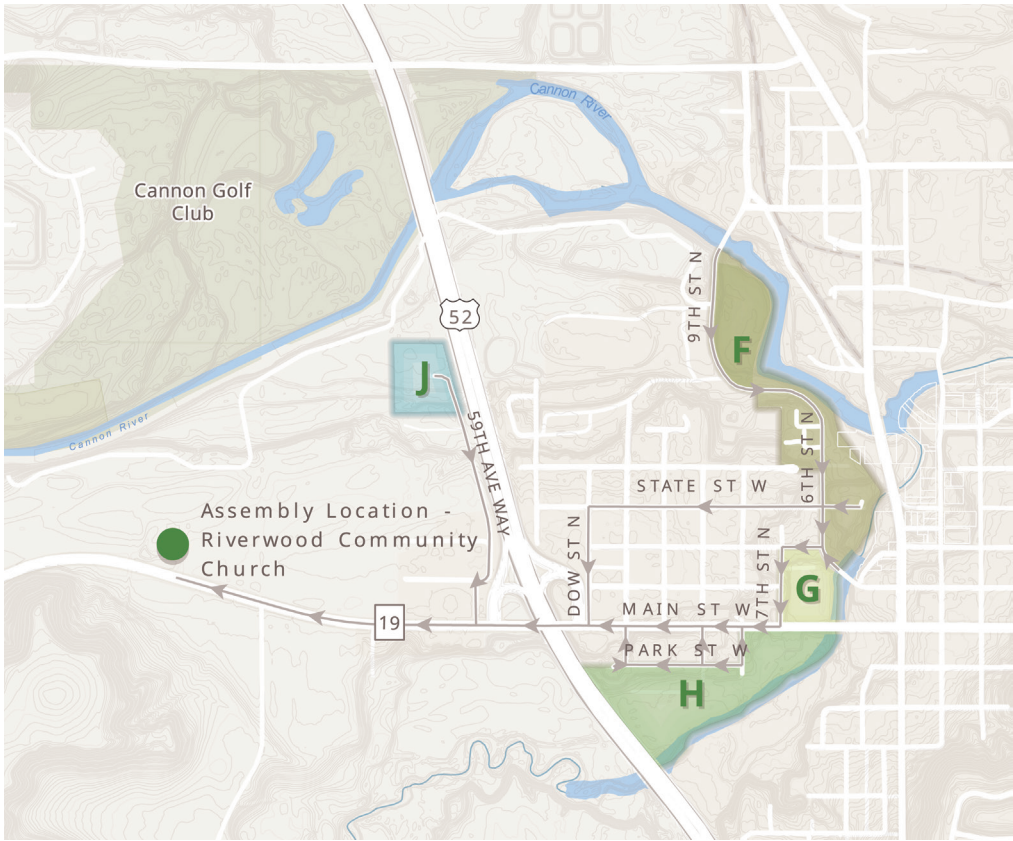
Please review the instructions and evacuation map on the back of this brochure.



**If you have an emergency during an evacuation related to the Byllesby Dam, call 911.**



# EVACUATION ZONES F, G, H & J



## WHAT TO DO:

- In the event of a flood evacuation, Zones F, G, H & J will follow the **GREEN** evacuation route signs to the collection point located at **Riverwood Community Church**.
- There are just minutes to evacuate, so only take people and pets with you.
- Once at the collection point, move to allow others to safely arrive. Law enforcement and first responders will collect your information and provide instructions.



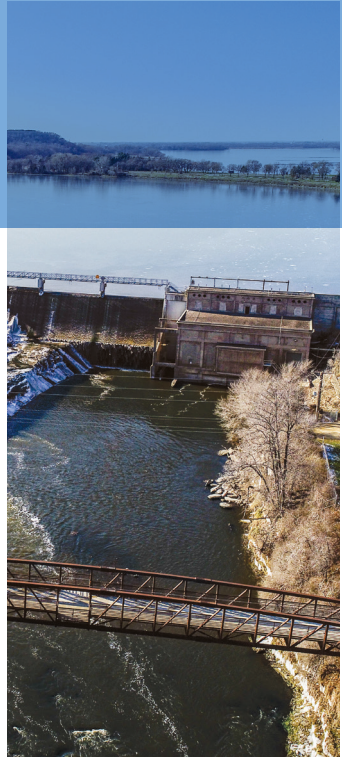
**PLEASE KEEP THIS BROCHURE IN A  
CONVENIENT LOCATION IN YOUR HOME**

# Byllesby Dam Evacuation Plan

**An action plan for residents  
in Zone K of the Byllesby  
Dam Evacuation Area.**

You are receiving this information because you live in an area of Cannon Falls that would need to be evacuated in the unlikely event of a structural failure of the Byllesby Dam that could cause rapid flooding downstream.

Please review the instructions and evacuation map on the back of this brochure.

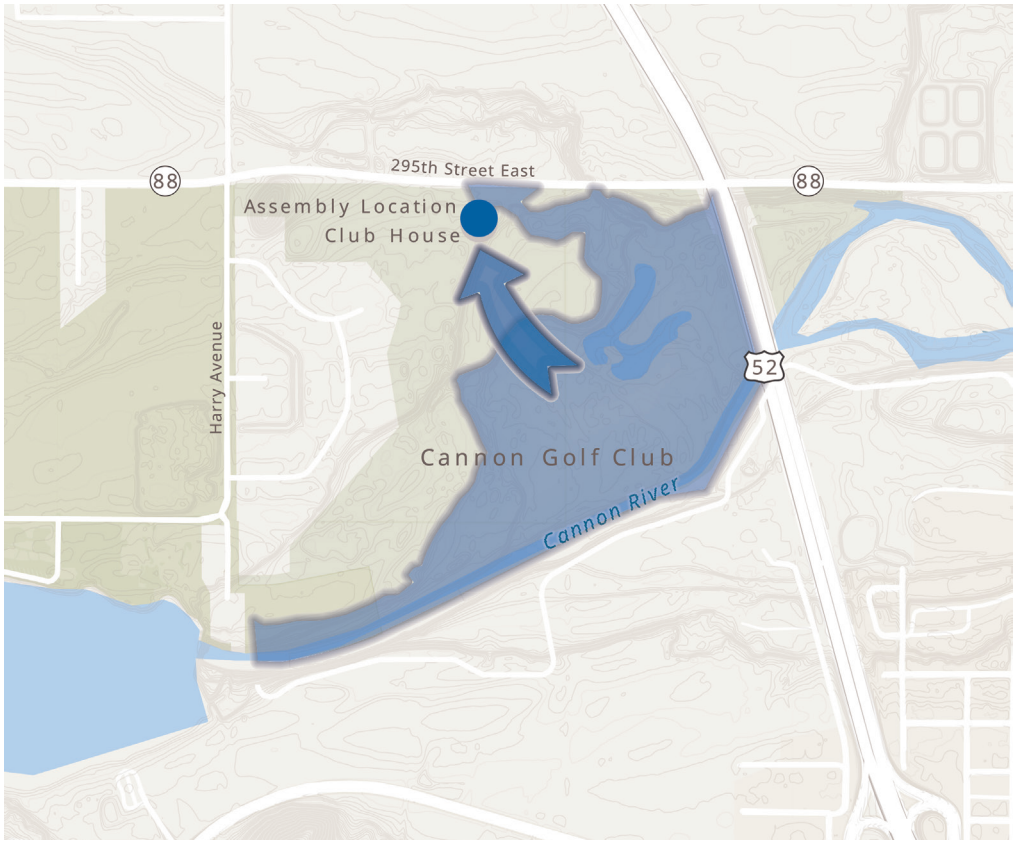


**If you have an emergency during an evacuation related  
to the Byllesby Dam, call 911.**





# EVACUATION ZONE K



## WHAT TO DO:

- In the event of a flood evacuation, Zone K will follow the **BLUE** evacuation route signs to the collection point located at **Cannon Golf Club**.
- There are just minutes to evacuate, so only take people and pets with you.
- Once at the collection point, move to allow others to safely arrive. Law enforcement and first responders will collect your information and provide instructions.



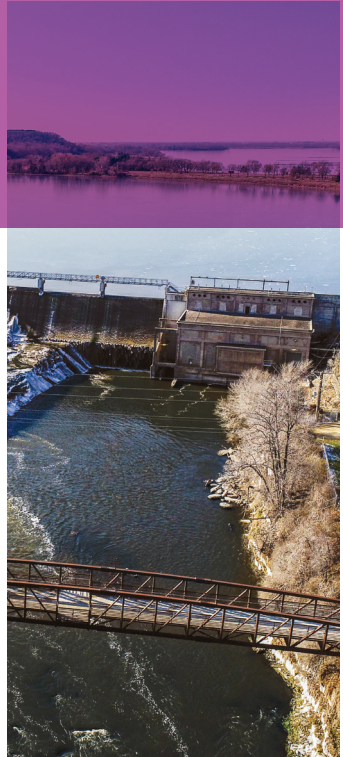
**PLEASE KEEP THIS BROCHURE IN A  
CONVENIENT LOCATION IN YOUR HOME**

# Byllesby Dam Evacuation Plan

An action plan for residents  
in Zone L of the Byllesby Dam  
Evacuation Area.

You are receiving this information because you live in an area of Cannon Falls that would need to be evacuated in the unlikely event of a structural failure of the Byllesby Dam that could cause rapid flooding downstream.

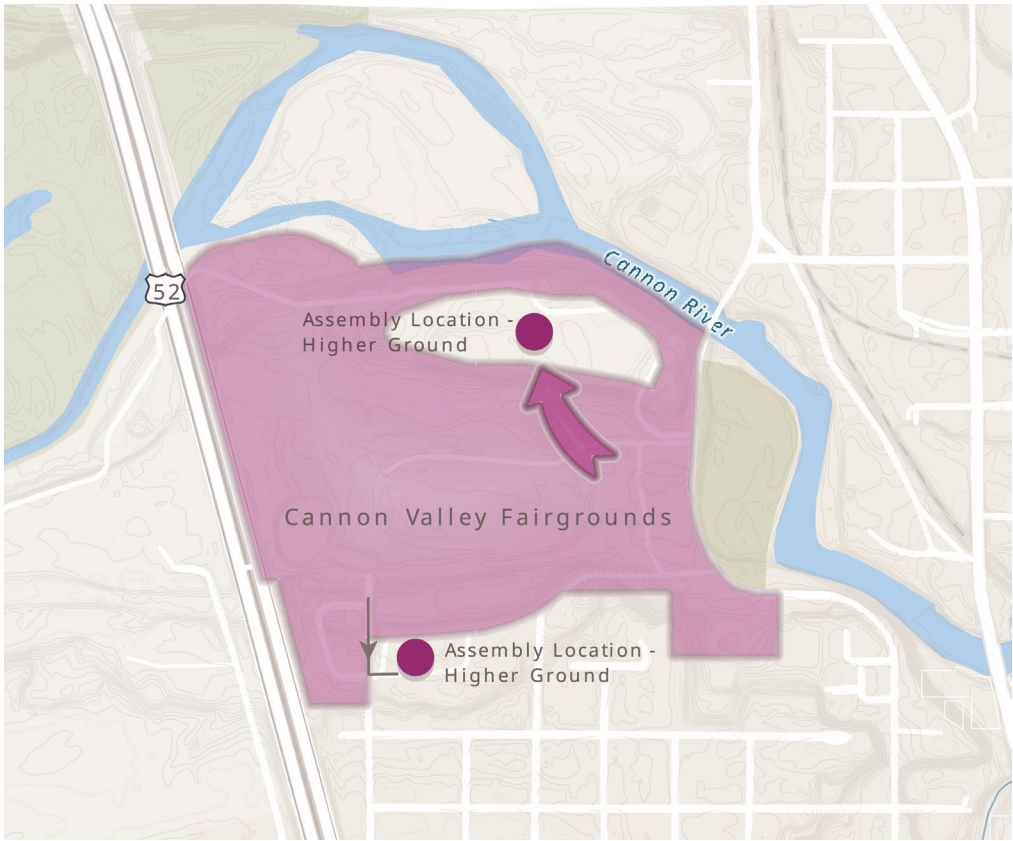
Please review the instructions and evacuation map on the back of this brochure.



**If you have an emergency during an evacuation related to the Byllesby Dam, call 911.**



# EVACUATION ZONE L



## WHAT TO DO:

- In the event of a flood evacuation, Zone L will follow the **PURPLE** evacuation route signs to the collection points located at **Higher Ground**.
- There are just minutes to evacuate, so only take people and pets with you.
- Once at the collection points, move to allow others to safely arrive. Law enforcement and first responders will collect your information and provide instructions.



**PLEASE KEEP THIS BROCHURE IN A  
CONVENIENT LOCATION IN YOUR HOME**