



Crisis and Recovery Center

Community Engagement Event

Community Engagement Meetings
Oct. 18th and Nov. 10th



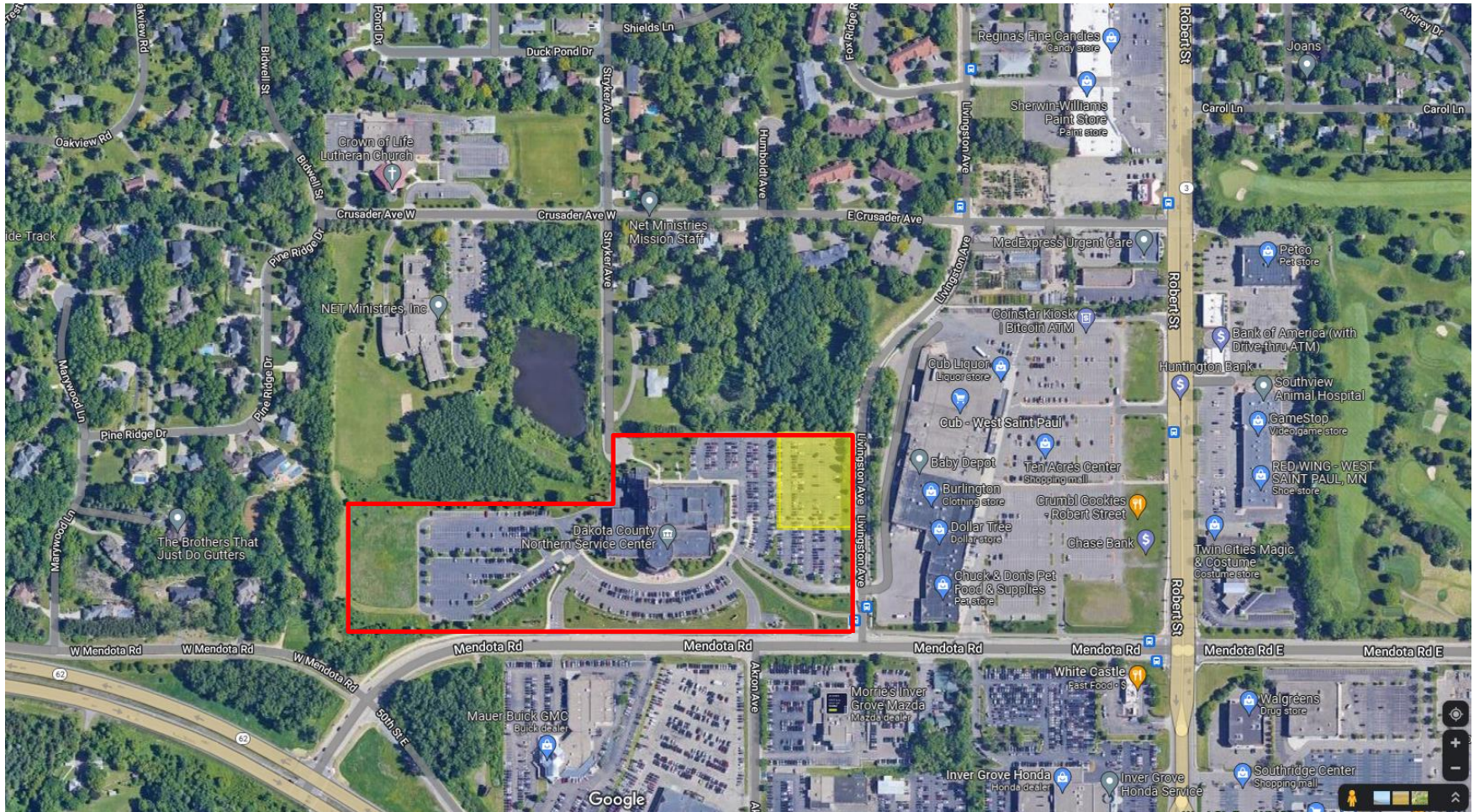
- Project Summary
- Partner and Community Engagement
- Background
- Service Description
- Site and Building
- Next Steps
- Questions

Project Summary

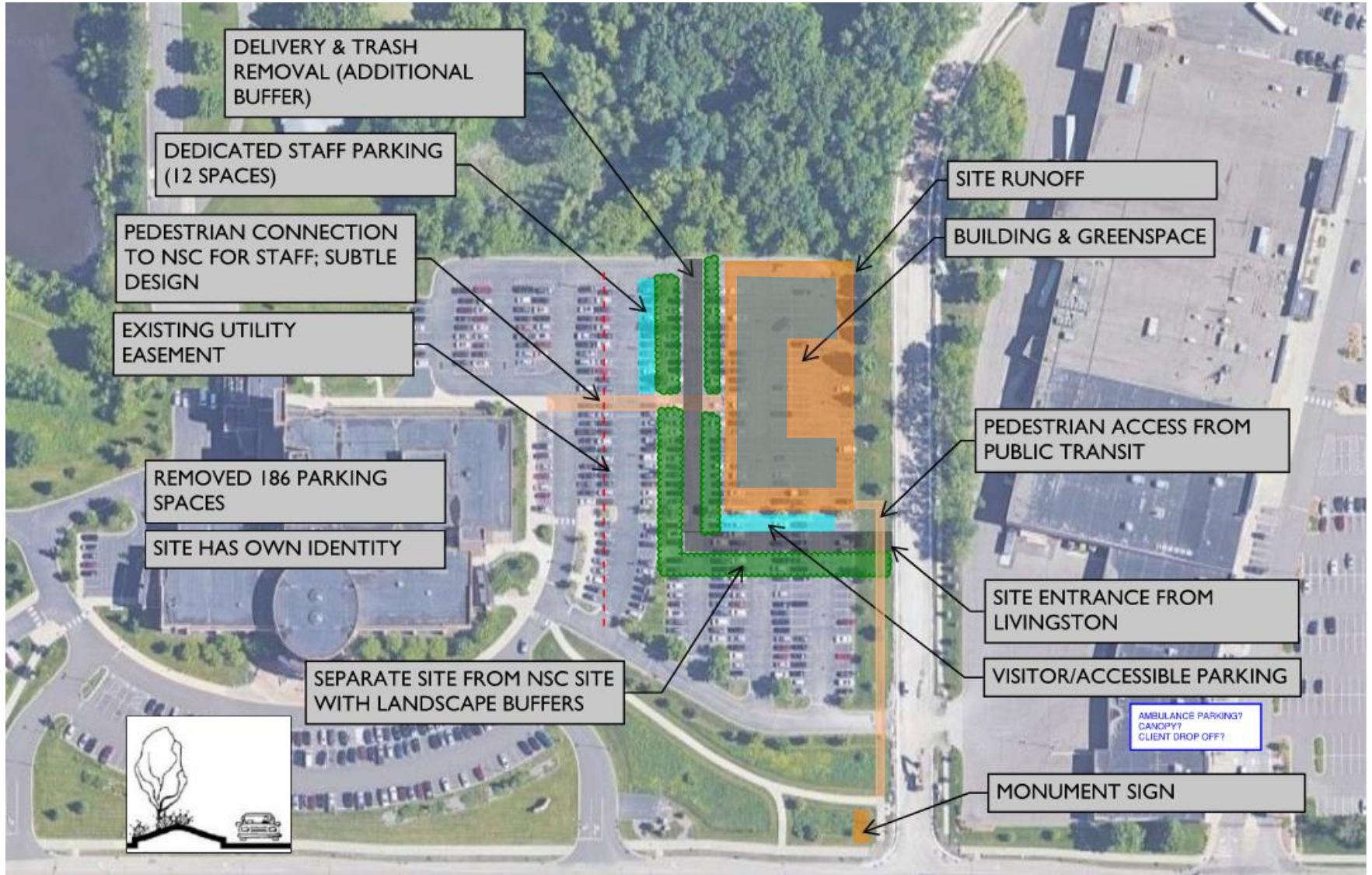


- Construct new building on an unused portion of the Dakota County Northern Service Center. Currently pursuing re-zoning with City of West St. Paul
- Relocate 15 beds of crisis residential and intensive treatment from aging facility in South St. Paul; increase capacity to 16 beds.
- “Place to go” 24/7 for crisis assessment, connection and support
- Building owned by Dakota County, services provided by Guild and Dakota County
- Collaboration between many stakeholders and system partners

Site Selection



Site Features

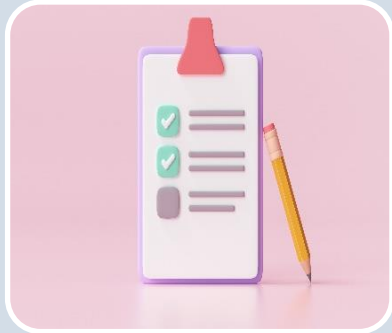


Building Features



- Proposed 16,000 sf facility
- Capacity for 16 clients
- Residential scale, welcoming aesthetics
- Screened greenspace for client privacy
- Trauma-informed and evidence-based design
- Sustainability and High-Performance Design
 - Follow Dakota County's Building Standards
 - Incorporate State of MN's B3 Design Requirements

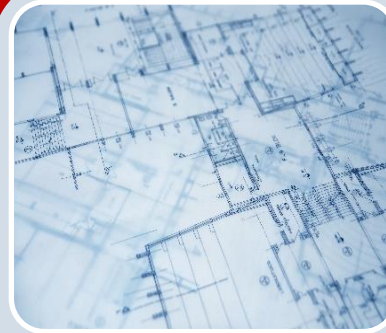
Project Steps



Application to
DHS for
bonding
dollars in
partnership
with service
provider, Guild



County Board
support for
moving
project
forward



Pre-design,
schematic
design,
rezoning
application



Per DHS
requirements,
building
completion
and service
delivery by
end of 2024

Community Engagement

Next Steps



Oct. 18th, 2022: Community Engagement Event (1p.m. & 6p.m.)

Nov. 10, 2022: Community Engagement Event (1p.m. & 6p.m.)

Nov. 15th, 2022: WSP Property Rezoning Review

Dec. 1st, 2022: Community Engagement Event

Nov. 29th, 2022: County Board Meeting-Physical Development Committee

Dec. 12th, 2022: West St. Paul City Council Meeting

January 10th, 2023: County Board Meeting-Physical Development Committee

Jan 2023 – Jun 2023: Remaining design work

Jul 2023 – Sep 2024: Bidding and Construction

Oct 2024 – Nov 2024: Building Occupancy

Deadline to use MN DHS funds: 12-31-2024

Guiding Principles



- Community asset that meets current and future needs
- Trauma-informed design
- Transparent design process that encourages diverse perspectives
- Calm and welcoming space that reflects inclusivity, accessibility, comfort and safety
- Building that is sustainable and durable

Partner and Community Engagement

- Letters of support for DHS grant application
- Ongoing updates and outreach:
 - Local Advisory Council for Mental Health
 - National Alliance on Mental Illness (NAMI)
 - West St. Paul City Council presentation
 - Four community engagement events, promoted through mailings and social media
 - Local media coverage
 - Presentations to stakeholder and community groups
 - 1-on-1 meetings, phone calls, and emails to engage, inform and learn

Background



- Counties have responsibility, under statute, for ensuring a locally available mental health system of care
- Fragile mental health infrastructure, services and buildings are chronically underfunded
- Aging buildings create near term risk of service capacity loss during time of high need and demand
- Dakota County applied for and conditionally awarded State bonding dollars for building costs
- Following national best practice guidelines

Effective Crisis Continuum:

- Someone to Talk to
- Mobile/Emergency Response
- **Somewhere to Go**
- Crisis Follow-Up

*From [SAMHSA's National Guidelines for Behavioral Health Crisis Care Best Practices Toolkit.](#)

Guild provides a continuum of services in Dakota County:

- Mental health case management
- Assertive Community Treatment
- Employment services
- Housing placement and homeless outreach
- Community support program
- **Crisis residential and intensive treatment services**
- Care coordination
- Behavioral health home

Service Description



- Intensive Residential Treatment Services (IRTS)
 - Mental Health treatment, up to 90-day stay.
 - Symptoms less severe than required for hospital, OR often used as a follow-up to hospital discharge to stabilize and re-enter the community.
- Crisis Residential Services (CRS)
 - Up to 10 day stay to stabilize mental health symptoms.
 - Less severe than hospital but need a therapeutic environment to stabilize.
- A welcoming “Place to Go” 24/7
 - Dakota County provides assessment, support, connection and stabilization

Questions?