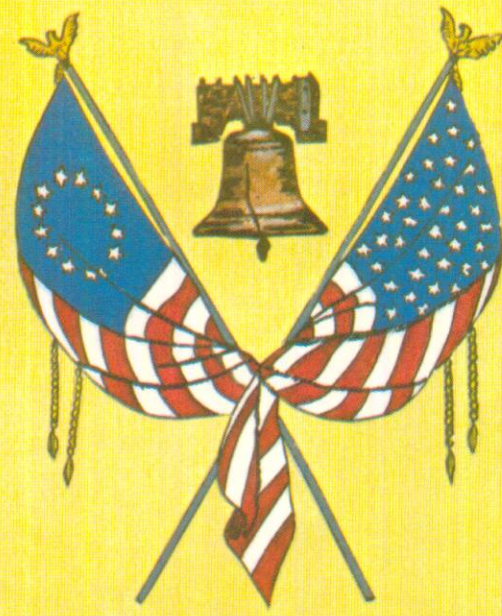


ORIGINAL DAKOTA COUNTY COURT HOUSE

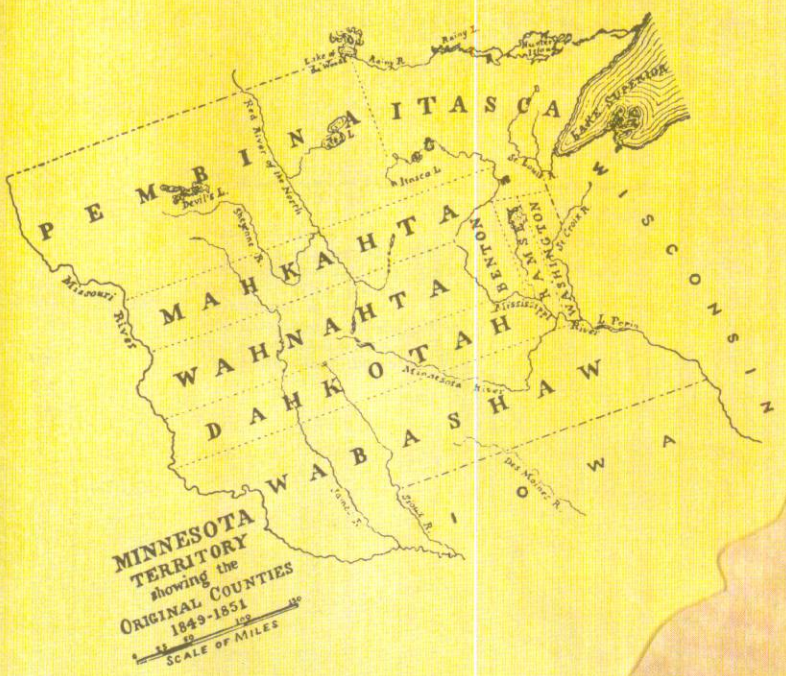
1776



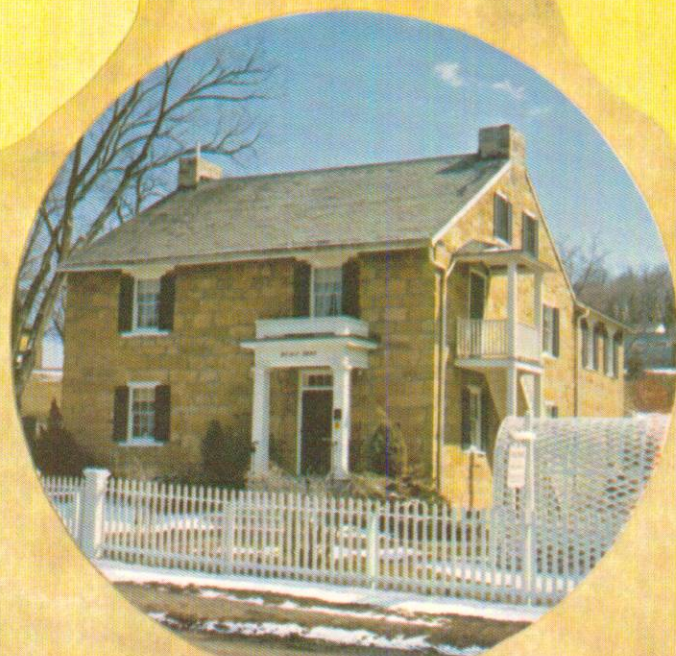
1976



DAKOTA COUNTY GOVERNMENT CENTER



MINNESOTA TERRITORY showing the ORIGINAL COUNTIES 1849-1851 SCALE OF MILES



SIBLEY HOUSE 1835

HISTORICAL BACKGROUND OF DAKOTA COUNTY

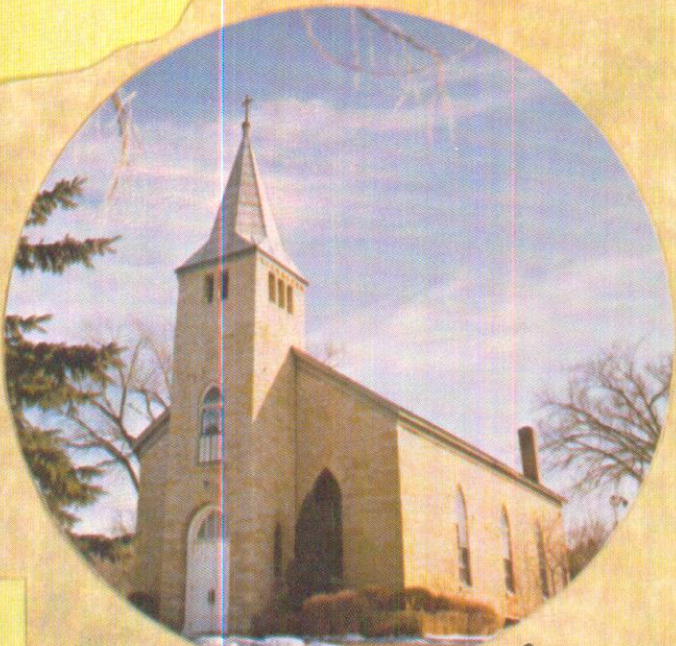
First viewed by white men in 1680, the present site of Mendota was later chosen for settlement by Jean Baptiste Faribault, the first permanent white settler in the whole State of Minnesota.

In 1803 the vast Louisiana Purchase was acquired by the United State from France. Zebulon Pike was sent by the Government to explore the new territory of the Northwest. Subsequently, he negotiated the land from the Indians (with Mendota, across the River), that became the center around which settlement was to begin.

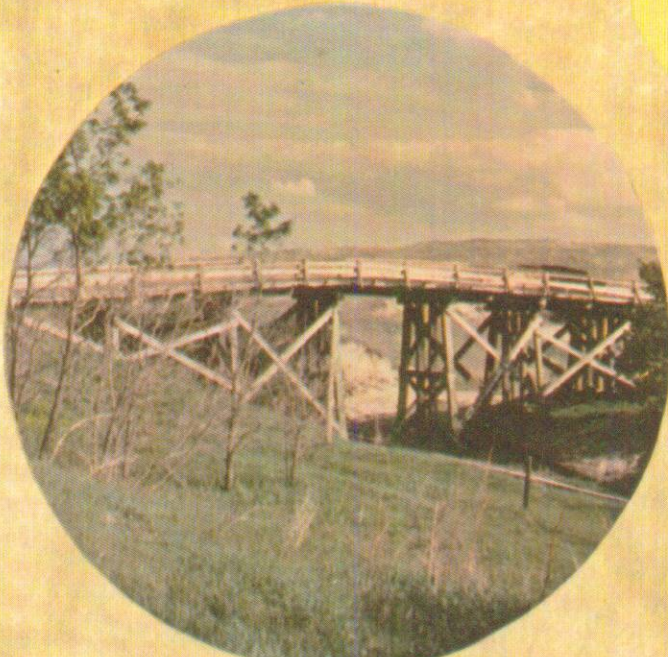
The arrival of the first steamboat in 1823 marked a new era in the County's History. Dakota became one of the nine original counties of Minnesota in 1849 although its present boundaries were not fixed until 1871.

Following a treaty with the Sioux in 1851, settlers flowed into the Southeastern Minnesota Territory. Dakota County received many of these pioneers and thriving communities began to emerge.

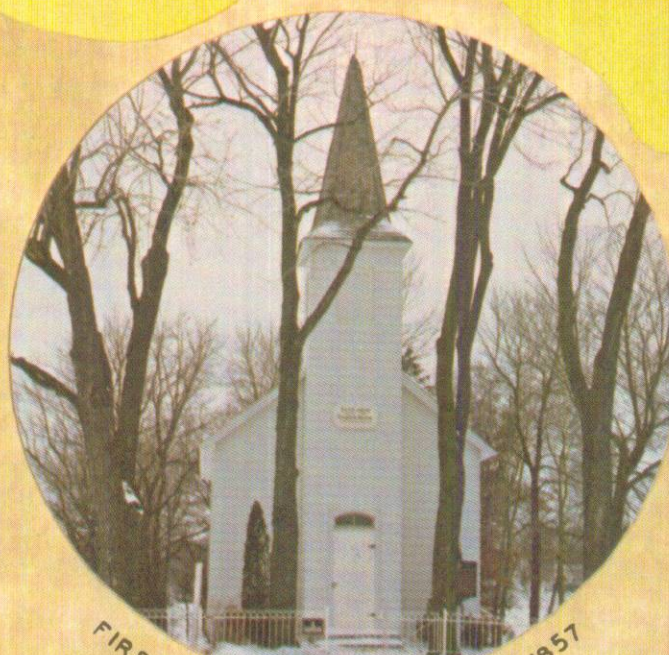
In the last fifteen years, Dakota County has experienced tremendous commercial, industrial and residential growth in the north; yet the southern portion has remained predominantly rural. Fortunately, in this time period, the communities caught up in the whirlwind of development saw the need to preserve the amenities that had precipitated their growth. A fine network of parks and open space was the result of their foresight. In 1968, Dakota County initiated an extensive Open Space Program, the most notable being the acquisition of 460 acres in Apple Valley which were deeded to the State of Minnesota for the construction of a State Zoological Garden scheduled for opening in 1977.



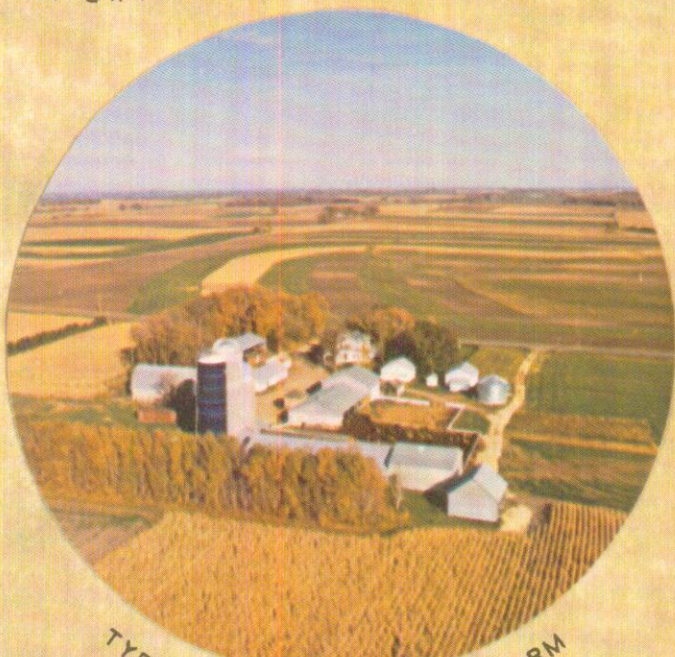
CHURCH OF ST. PETER 1852



BILLY GOAT BRIDGE



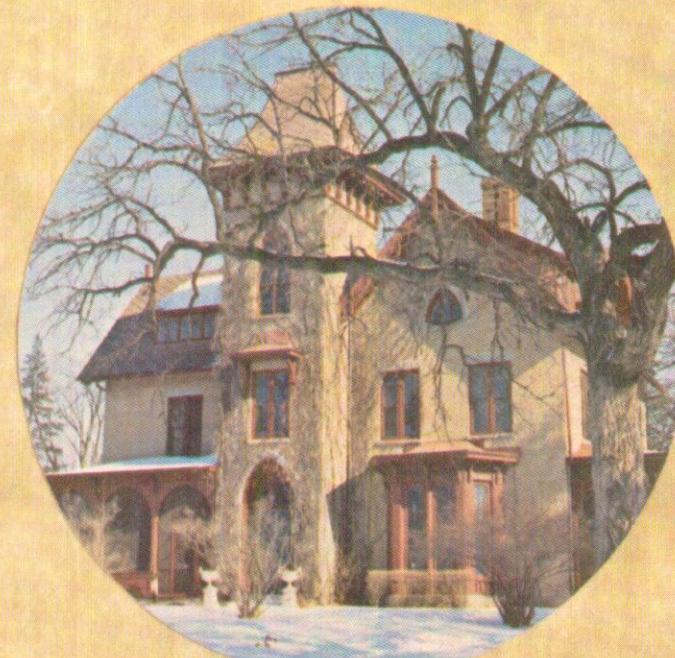
FIRST EVANGELICAL CHURCH 1857



TYPICAL DAKOTA COUNTY FARM



CHIMNEY ROCK

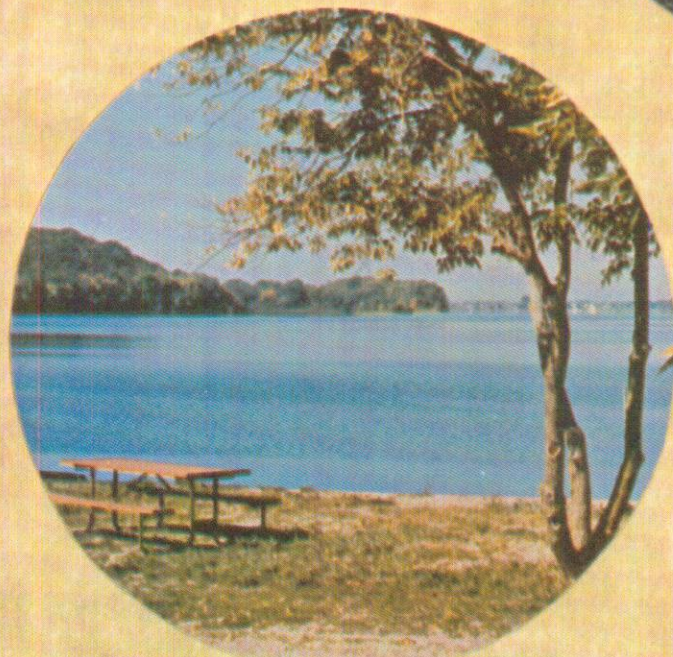


LE DUC MANSION

HIGHWAY EMERGENCY

In an emergency, dial 0, Zenith 7000, a Minnesota Highway Patrol Number (which may be called without toll from anywhere in Minnesota). Telephone 612-296-3076 Minnesota Highway Dept. road information 24 hrs. a day from October to May.

County Maintenance Shop
900 West CSAH 47, Hastings
Phone- 437-9613
Dakota County Sheriff
Phone- 437-4211
Dakota County Civil Defense
Phone- 437-3191



LAKE BYLLESBY PARK

HISTORIC SITES IN DAKOTA COUNTY

- Sibley House** - T.H. 13, Section 27, T28N, R23W. The first stone mansion in Minnesota, built by Henry Sibley in 1835.
- Church of St. Peter** - Near Mendota Bridge & T.H. 13 easterly, Section 27, T28N, R23W. First church built of stone 1852.
- Faribault House** - T.H. 13, Section 27, T28N, R23W. Built by Jean Baptiste Faribault in 1837. An example of colonial architecture.
- Historical Marker Mendota** - on North side of T.H. 13 Section 27, T28N, R23W at entrance to St. Peter Cemetery. History of cemetery and date of establishment.
- Sibley Memorial Marker** - North side of T.H. 13 Section 27, T28N, R23W.
- Limestone Caves** - Lilydale, Section 14, T28N, R23W. Series of caves along bluffs, T.H. 13.
- Historical Marker** - Kaposia Indian Village that existed 1839-1852 in South St. Paul on Concord Street where Cenex Building now stands.

- First Evangelical Lutheran Church** - 1857 - Salem Church Road (C.R. 18), Section 32, T28N, R22W.
- Pine Bend Cemetery** - 1856 - Near 117th Street, Section 34, T27N, R22W, east side of T.H. 55. Cemetery was used as burial grounds for Civil War casualties.
- LeDuc Mansion** - 1856 - Hastings, 1629 Vermillion St. Section 27, T115N, R27W. Thought to be the first in State of Victorian Gothic Style.
- Courthouse** - 1870 - 317 Vermillion Street, Section 27, T115N, R27W.
- Chimney Rock** - west of County Road 89, NE 1/4 of Section 31, T114N, R17W, Marston Township, a sandstone outcropping taking on the form of a chimney.
- The Parish of St. Mary** - in New Trier, SW 1/4, Section 11, T113N, R18W. Began as the first log Church in 1856.
- Lake Byllesby Dam** - NE 1/4 Section 14, T112N, R18W, constructed in 1910 in Randolph Township.

- Castle Rock** - NE 1/4 Section 32 T113N, R19W, Castle Rock Township. A tall sandstone bluff near the Town of Castle Rock.
 - Christiana** - 1857 - SW 1/4 Section 28, T113W, R20W. "Twin Churches" Built by early Norwegian settlers.
 - Former County Poor Farm** - NE 1/4, Section 18, T114N, R19W. A huge complex of buildings on T.H. 3 north of Farmington.
 - Dakota County Fair Grounds** - Farmington, NE 1/4, Section 6, T113N, R19W. "Old Town" on Fair grounds, a collection of pioneer day buildings.
 - Antlers Park** - Lakeville, NE 1/4, Section 30 T114N, R20W. Once a favorite outing place on the old Dan Patch Electric Line Train.
 - Buck Hill** - Burnsville, SE 1/4, Section 36 T115N, R20W. Highest elevation in Dakota County at 1194.5. Once used as an Indian lookout during deer hunting.
 - Billy Goat Bridge** - West Burnsville SW 1/4, Section 23, T115N, R21W. A wooden arch bridge on Judicial Road.
 - Black Dog Lake** - East of 35W, north of T.H. 13 N 1/2 Section 27, T27N, R24W. Old village site of Chief Black Dog.
 - Pilot Knob** - SE 1/4, Section 28, T28N, R23W. A high point of land off T.H. 13 and T.H. 55. Once an Indian meeting place, now Acacia Cemetery.
- For more information on the above sites or other landmarks in Dakota County, call or write to the Dakota County Historical Society, 125 3rd Avenue N., South St. Paul, MN, 55075, 451-6260

