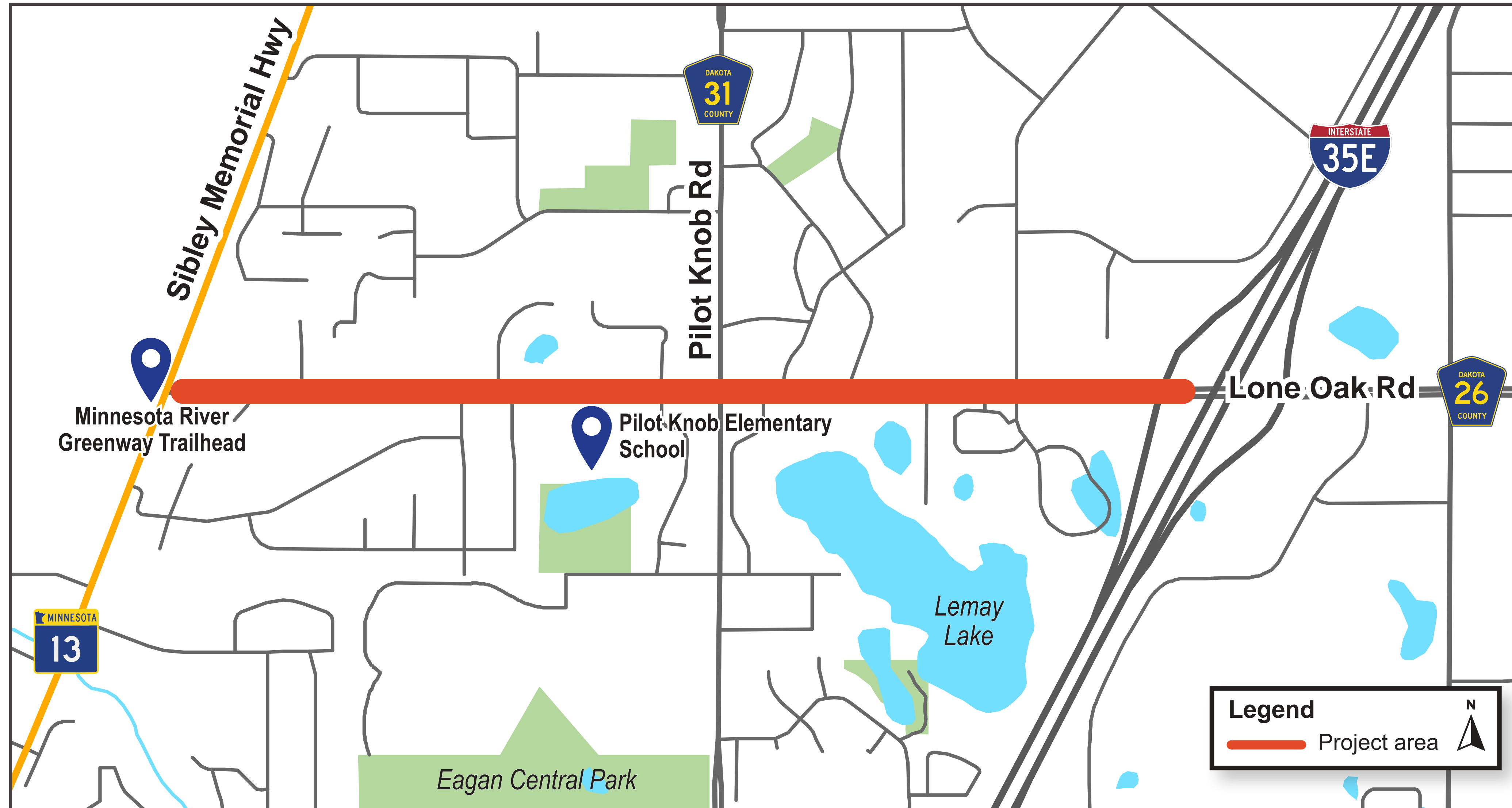


Lone Oak Road (County Road 26) Improvements



Project Overview

Dakota County, in partnership with the City of Eagan, is planning roadway and trail improvements to Lone Oak Road (County Road 26) between Highway 13 and I-35E in Eagan to **create a safe experience for vehicles, pedestrians, and bicyclists**. An analysis of existing and future traffic patterns, conditions and issues has been conducted and a preferred corridor design has been developed.

Corridor Importance

This section of the corridor is a critical component of the regional trail and transportation network:

- » Provides a connection to the **Minnesota River Greenway Trailhead**
- » Provides a connection to **Highway 13, Pilot Knob Road, and I-35E**
- » Serves the **Pilot Knob Elementary School**, area residents and businesses

Proposed Improvements

- » A **multi-use trail** along on the section between Highway 13 and Pilot Knob Road (County Road 31)
- » **Lane reduction** from four and five to **three lanes** on the section between Pilot Knob Road (County Road 31) and I-35E
- » Water main, drainage, and storm sewer improvements
- » Improved pedestrian and bicycle crossings
- » Lighting and landscaping enhancements

Project Schedule



Project Contacts

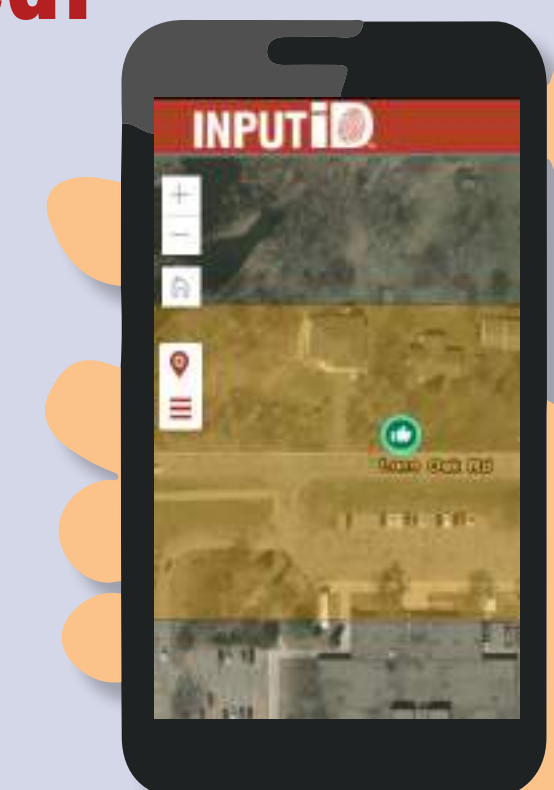
Tony Wotzka | Project Manager (Dakota County) tony.wotzka@co.dakota.mn.us (952) 891-7966
 John Gorder | City Engineer (City of Eagan) jgorder@cityofeagan.com (651) 675-5645
 Jake Bongard | Project Manager (Bolton & Menk) jacob.bongard@bolton-menk.com (952) 201-9488

Stay Connected!

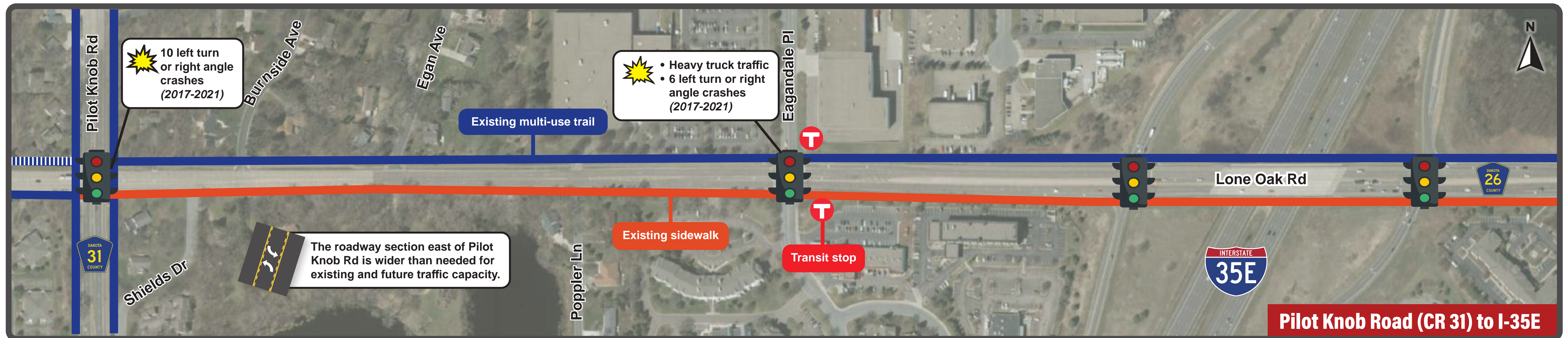
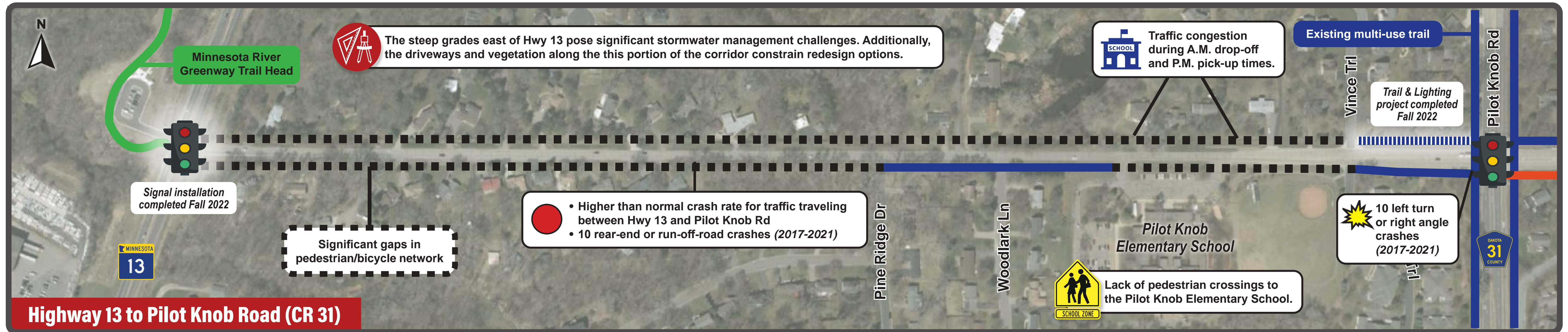
Visit the project website to sign up for project updates and submit feedback on our interactive comment map!



Scan the QR code or search **lone oak road** on Dakota County's website: DakotaCounty.us



Existing Conditions & Traffic Analysis



Project Goals

- Provide **efficient** and **reliable** vehicle mobility
- Implement **safety** improvements where applicable for all modes, including pedestrians, bicyclists, cars, transit and freight
- Provide a **comprehensive network** for multimodal transportation that is **compatible** with local and regional needs
- Establish water resources improvements to **accommodate complex drainage and water treatment needs** west of Pilot Knob Road
- Provide infrastructure improvements **compatible with the natural and human environment**

Traffic Analysis Key Takeaways

- **Above expected number of crashes** from Highway 13 to Pilot Knob Rd compared to similar roadways statewide
- **Elevated number of left turn and right angle crashes** at the intersections with Pilot Knob Rd and Eagandale Blvd
- Existing delays within the study area are **acceptable** during the peak hours.
- Due to low levels of anticipated traffic growth in the future, **traffic operations are not anticipated to become problematic** in the long-term

What We Heard

June 2022 Open House Summary of Feedback Received

Engagement	Promotion
<p>43 attendees</p> <p>56 comments</p>	<p> Postcard Website Signage </p> <p> Email Updates Social Media </p>

Popular Feedback

- Interest in a trail along Hwy 13 to McCarthy Rd / Yankee Doodle Rd
- Desire to limit truck traffic and noise
- Need for a trail on only one side of the roadway
- Desire to remedy school traffic congestion
- Need for improved pedestrian/bicycle facilities near school

Highway 13 to Pilot Knob Road (CR 31)

This map shows the route from Highway 13 to Pilot Knob Road. Key feedback points include:

- Approval of planned 2022 signal installation
- Steep grades make biking difficult
- Conflict between northbound bike traffic and vehicle traffic turning east
- Add trail to connect McCarthy Rd to Lone Oak Rd
- Need advanced warning for new traffic signal because of steep grade
- Concerns about driveway impacts
- Winter maintenance of trail should be considered due to steep grade
- Speeding and noise concerns
- Concern with tree removals for trail
- Vehicles go off the road to avoid traffic queue during drop-off and pick-up times
- Request for better trail connections and signage
- Approval of planned 2022 Trail & Lighting project

Pilot Knob Road (CR 31) to I-35E

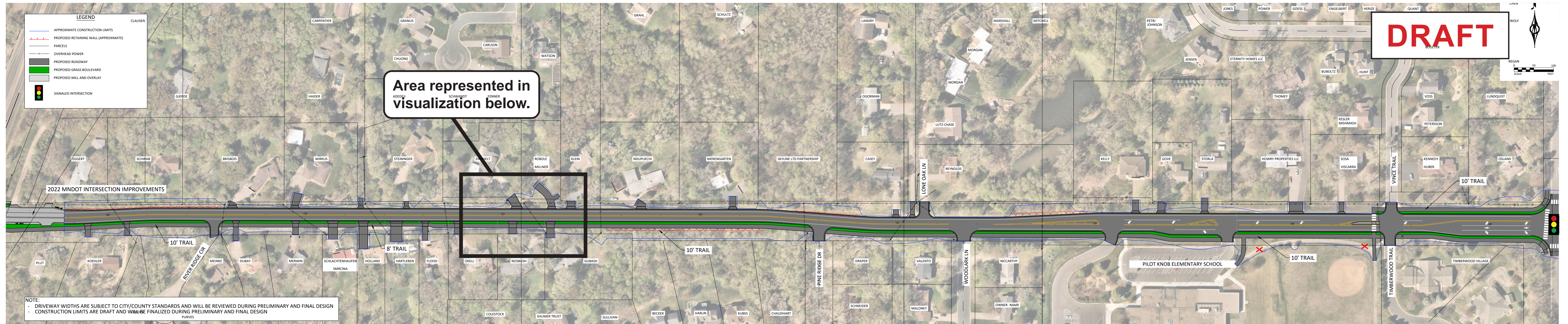
This map shows the route from Pilot Knob Road to Interstate 35E. Key feedback points include:

- Request to provide turn lane
- Difficult turning left off Shields Drive and concern lane reduction will worsen this
- Low volumes of pedestrian traffic
- Narrow path creates bottleneck for two-way bike traffic, shoulder should be striped

LEGEND
 Existing multi-use trail
 Existing sidewalk
 Minnesota River Greenway Trailhead
 Transit stop

Recommended Corridor Improvements

Highway 13 to Pilot Knob Road (CR 31)



Recommended Corridor Improvements

Multi-Use Trails - A trail is proposed for the south side of the roadway from Highway 13 to Pilot Knob Road and north and south of Lone Oak Road from Vince Trail to Pilot Knob Road.

Why only one trail between Highway 13 and Vince Trail?

- Allows more space for the improvements, reducing impacts:
 - » Roadway centerline shifted 8 feet north of current line to balance impacts and maintain driveway grades

Why on the south side instead of the north?

- Aligns with Highway 13 crossing to the Minnesota River Greenway Trailhead and Pilot Knob Elementary School
- More users with direct driveway access and neighborhood connections
- Provides wider shoulder on north side for additional separation and safer mailbox access

School Area Accommodations - Improvements align with Pilot Knob STEM School and School District efforts to improve crossings and trail networks for students and pedestrians. *View the "Pilot Knob STEM School Area Improvements" board for more information.*

Water main, drainage, and storm sewer improvements - Curb and gutter will be installed throughout the project area and aging water main infrastructure will be rehabilitated as needed.



Share your feedback on the proposed improvements!

Mark up the in-person layout or visit the project website to provide your input using our interactive comment map.

Scan the QR code or search **lone oak road** on Dakota County's website: DakotaCounty.us



Recommended Corridor Improvements

Pilot Knob Road (CR 31) to I-35E



Recommended Corridor Improvements:

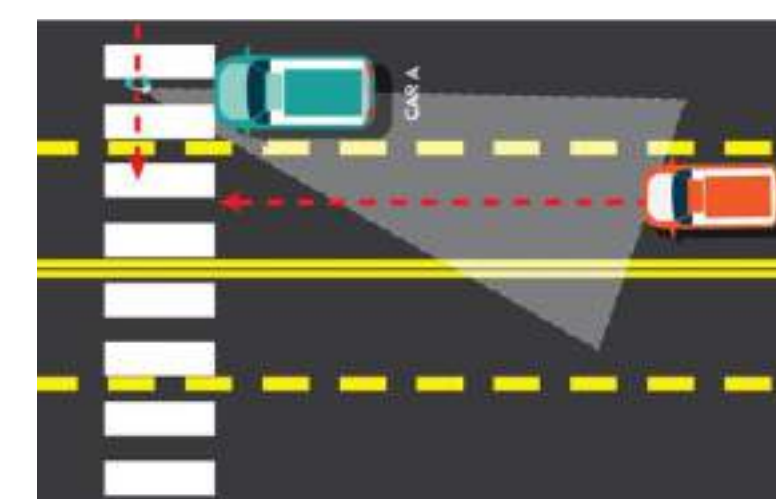
4-Lane to 3-Lane Conversion - A lane reduction will improve safety, calm traffic, provide better mobility and access for all road users, and reduce the likelihood of a pedestrian-generated chain-reaction crash.

Access Modifications - Private access spacing and locations remain under review to determine if modifications are needed to meet County guidelines.

Traffic Signal Replacement - The traffic signal at the Egandale Boulevard intersection is nearing the end of its useful life and will be replaced with any roadway improvements.

Pedestrian Accommodations - A center median will be added to the roadway at Egandale Boulevard to provide a refuge for pedestrians as they cross the roadway.

Turn Lane Needs: Dedicated right turn lanes are recommended at Shields Drive and Burnside Avenue. All public streets and private driveways will be provide a left-turn lane with the inclusion of a center two-way-left-turn-lane from Pilot Knob Road to Egandale Boulevard.



Example of a pedestrian-generated chain-reaction crash.



Share your feedback on the proposed improvements!

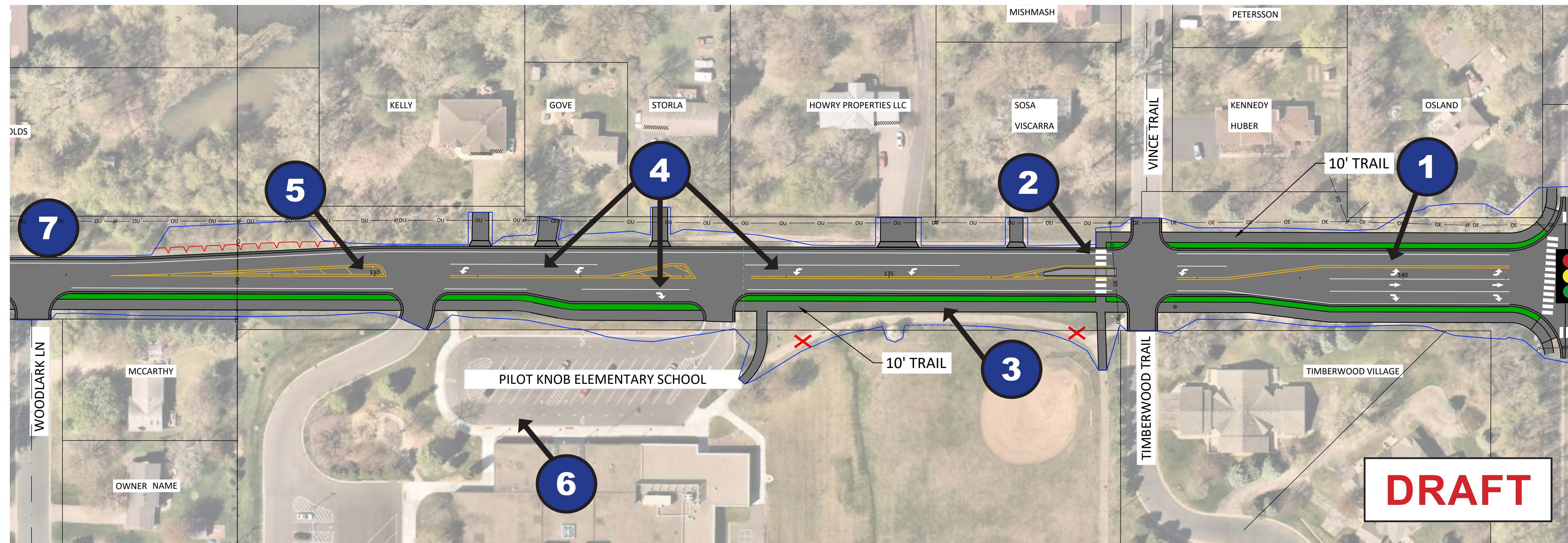
Mark up the in-person layout or visit the project website to provide your input using our interactive comment map.

Scan the QR code or search **lone oak road** on Dakota County's website: DakotaCounty.us



Pilot Knob STEM School Area Improvements

Dakota County is collaborating with the City of Eagan, Eagan Police Department, Independent School District (ISD) #197, and Pilot Knob STEM Magnet School to identify improvements to the Lone Oak Road Corridor and school site that improve safety for all types of users.



Recommended Improvements

- 1 Lane Reduction** - The segment of Lone Oak Road between Vince Trail and Pilot Knob Road currently includes two westbound lanes that reduce to one west of Vince Trail. This creates a wider crossing distance for pedestrians and can encourage higher speeds as drivers begin to merge into one lane. A reduction to one thru lane west of Pilot Knob Road is expected to improve safety.
- 2 Enhanced Pedestrian Crossing** - Pedestrians and bicyclists regularly cross Lone Oak Road at Vince trail to access the school and park. The proposed crossing with a raised center median will reduce the crossing distance, improving safety. Additional enhancements such as pedestrian flashers and school crossing guards are also being explored.
- 3 Trail Improvements** - A continuous trail connection will be provided between Highway 13 to the west and Pilot Knob Road to the east. The existing trail on the school site will be removed where redundant and tied into the County trail system.
- 4 Turn Lane Improvements** - Left and right-turn lanes will be added at the east school access to reduce congestion and back-ups caused by vehicles turning into the school parking lot. Similarly, a left-turn lane will also be added for the west school access to accommodate bus and vehicle traffic.
- 5 Typical Section** - The typical section transitions back to a two-lane undivided corridor west of the West School Access to reduce impacts to the steep grades and heavy tree cover north of Lone Oak Road.

2 School Crossing Guards

Similar to other schools in the district, ISD #197 has committed to providing crossing guards in conjunction with enhanced mid-block pedestrian crossing improvements.



6 School Site Operations

Traffic flow improvements are being considered to minimize wait times during school drop-off and pick-up hours.



7 School Speed Zone

A 30 mph school speed zone is currently in-place from Pine Ridge Drive to Vince Trail when children are present. Speed zone parameters and speed limits here will be evaluated.



Regional Projects and Next Steps

What's Next?

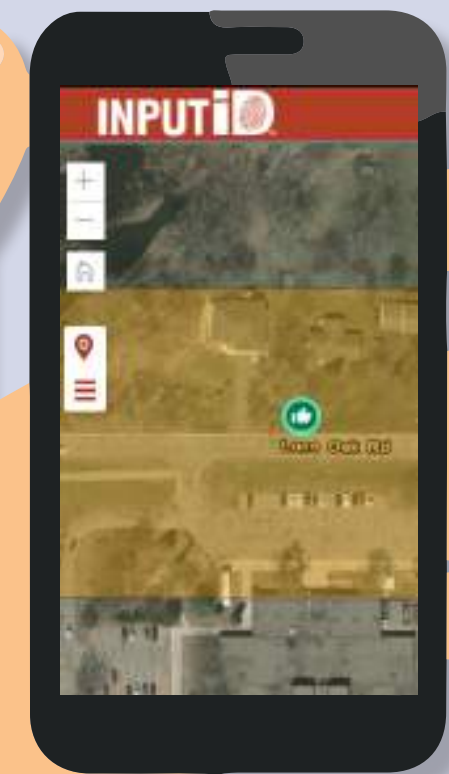
Following this open house, the project team will collect your feedback through **Wednesday, Nov. 30** and use it to inform the preliminary design process. Another open house will be held in Spring 2024 to share the final corridor improvements and discuss what to expect during construction including staging, traffic control, schedule, and impacts.

Project Schedule



What Should I Do Now?

1. Review the information presented on the boards
2. Share your feedback!

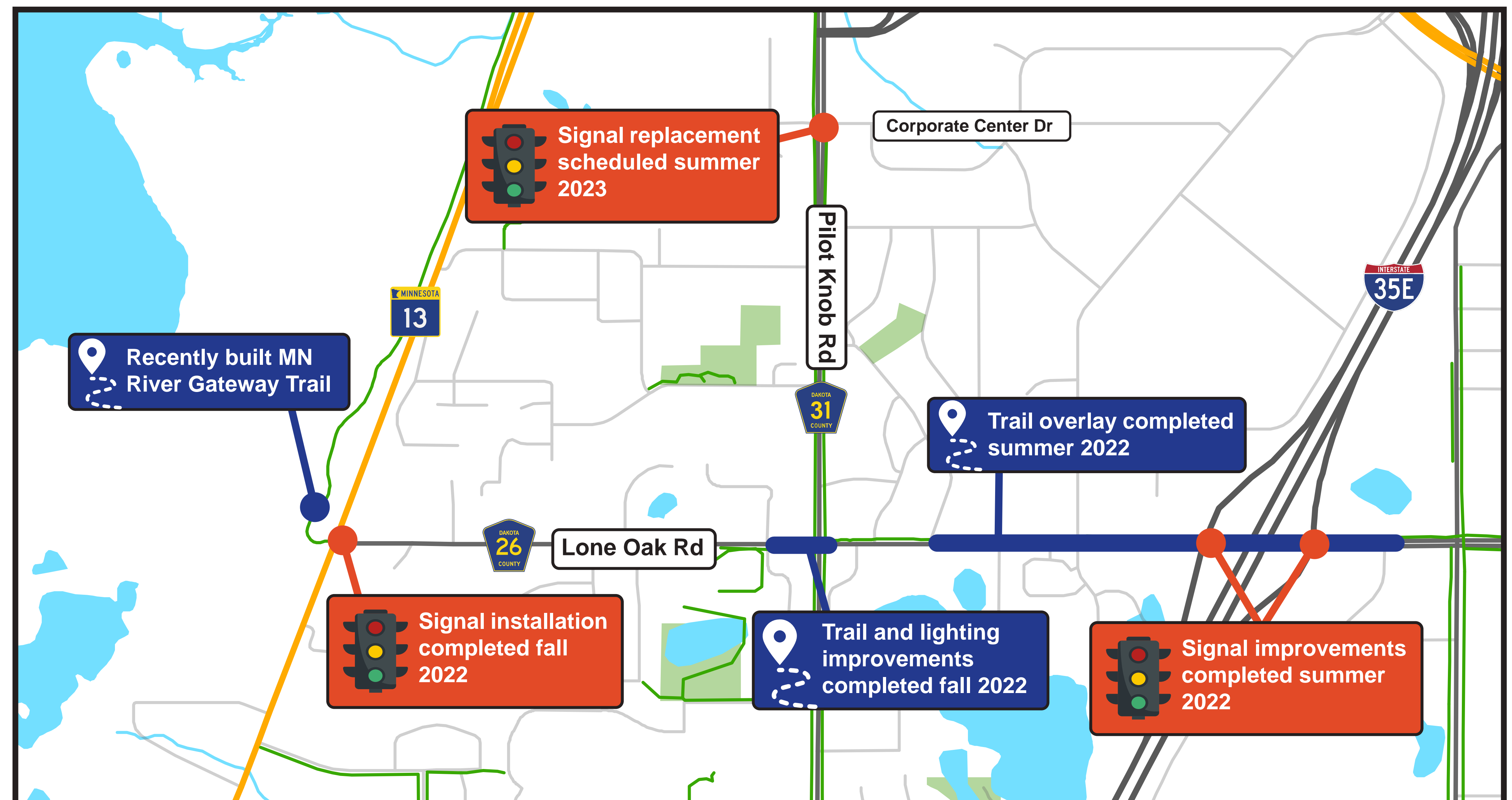


- » Mark up the project layouts and fill out a comment card in-person.
 - » Visit the project website to provide your comments using our interactive comment map.
3. Sign up for project updates!

Scan the QR code or search **lone oak road** on Dakota County's website: DakotaCounty.us



Recent and Planned Improvements



Project Contacts

Tony Wotzka | Project Manager (Dakota County)
tony.wotzka@co.dakota.mn.us (952) 891-7966

John Gorder | City Engineer (City of Eagan)
jgorder@cityofeagan.com (651) 675-5645

Jake Bongard | Project Manager (Bolton & Menk)
jacob.bongard@bolton-menk.com (952) 201-9488