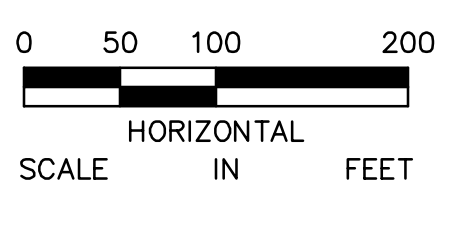


LEGEND

	ARGENTA/AMANA TRAIL RIGHT-OF-WAY
	EDGE OF TRAIL/SIDEWALK
	INPLACE GAS PIPELINE
	INPLACE XCEL TRANSMISSION LINE
	PROPOSED ROADWAY CORRIDOR
	EXISTING WETLAND/STORMWATER POND IMPACTED
	EXISTING WETLAND/STORMWATER POND TO BE PROTECTED
	PROPOSED WETLAND/STORMWATER POND
	FUTURE INTERCHANGE LAYOUT



CSAH 28/CSAH 63
PRELIMINARY DESIGN
CITY PROJECT 2014-11
COUNTY PROJECT 63-25
ALIGNMENT OPTION 2